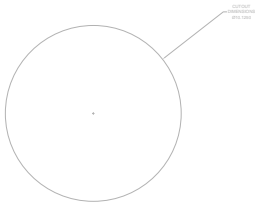
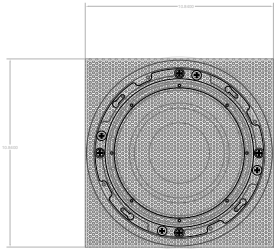
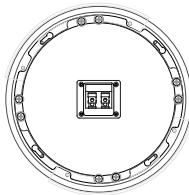
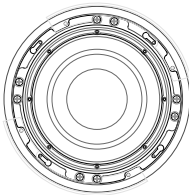
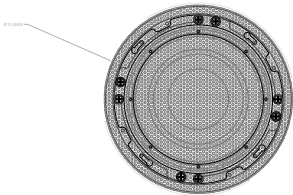
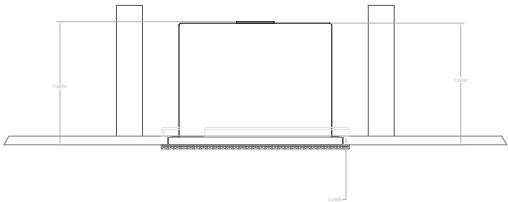


REVISIONS				
ECO	REV.	DESCRIPTION	DATE	APPROVED
	A	RELEASE FOR PRODUCTION	05-23-14	
	B	CHANGED TO EASY MOUNT METHOD	05-08-17	



NOTES:

- 1: MATERIAL - 0.125" THICK 5052 ALUMINUM
UNLESS OTHERWISE SPECIFIED
- 2: FINISH: TBD

PROPRIETARY INFORMATION THE DESIGNS, INFORMATION, AND DATA CONTAINED HEREIN ARE PROPRIETARY AND ARE SUBMITTED IN CONFIDENCE. USED OR DUPLICATED IN WHOLE OR IN PART, FOR ANY PURPOSES WHAT- SOEVER OF JAMES LOUDSPEAKER LLC, 535 AIRPARK RD, NAPA, CA 94558. THIS LEGEND SHALL BE MARKED ON ANY REPRODUCTIONS HEREOF IN WHOLE OR IN PART. RECEIPT OF THIS DOCUMENT SHALL BE DEEMED TO AN ACCEPTANCE OF THE CONDITIONS SPECIFIED HEREIN.		JAMES LOUDSPEAKER QXC8S-R/S	
EXTERNAL DIMENSIONS		DWR #: 140523-N101	
PIN: QXC8S-R/S		REVISED BY: C. NEWMAN	
DRAWN BY: M. PARK		FILE:	
DATE: 05-23-14		SCALE:	
APPROVED:		DO NOT SCALE DRAWING	
DRAFTING APPROVED:		DRAWING NOT TO BE USED FOR CNC	
		TOLERANCES: ANG: ± = .5° FRACT: ± = 1/32	
		DECIMALS: XX ± = .01 .XXX ± = .005	
REVISION: B		SHEET 1 OF 1	