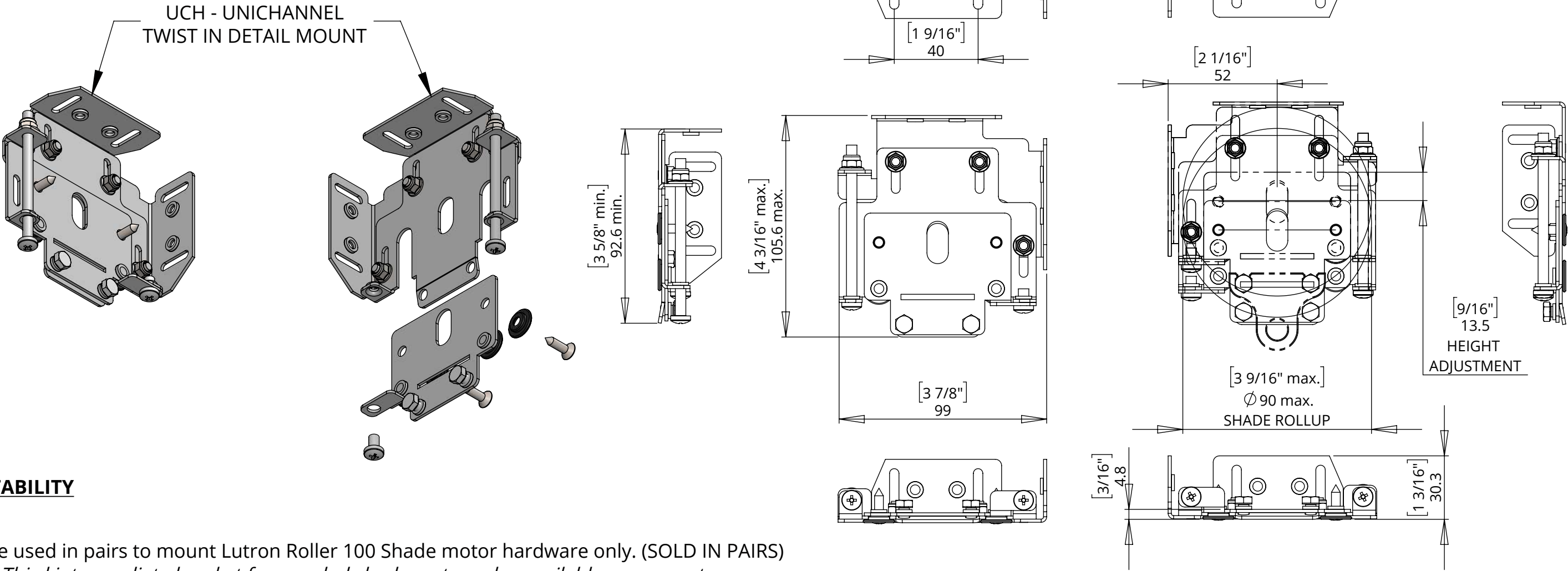


SB-L100-UF-ADJ

LUTRON ROLLER 100 ADJUSTABLE BRACKET



SUITABILITY

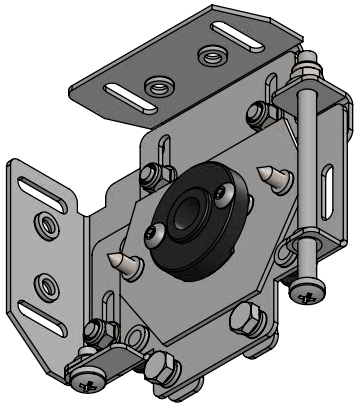
To be used in pairs to mount Lutron Roller 100 Shade motor hardware only. (SOLD IN PAIRS)
Third intermediate bracket for coupled shade system also available on request.

This bracket can be used as a standalone mounting solution for any top fix or face fix mounted shade with in a pocket / recess. Note : This bracket is not recommended for exposed installations.

This bracket can also be used in conjunction with the **UCH - UniChannel** recessed shade pocket system.

Alternative version available for use with Future Automation Large Fascia Headbox.

RAL - 9910 - Hipca White as standard
Can be custom RAL colour matched on request - please enquire for more information



SB-L100-UF-ADJ-CPL
INTERMEDIATE LUTRON 100
COUPLED SHADE BEARING SUPPORT
BRACKET ALSO AVAILABLE SEPERATELY.

SB-L100-UF-ADJ

LUTRON ROLLER 100 ADJUSTABLE BRACKET



future automation

**LUTRON - COUPLED SHADE
(THREE SHADES - COUPLED)
ORDER BELOW:**

- 1 X SB-L100-UF-ADJ
- 2 X SB-L100-UF-ADJ-CPL

**LUTRON - COUPLED SHADE
(TWO SHADES - COUPLED)
ORDER BELOW:**

- 1 X SB-L100-UF-ADJ
- 1 X SB-L100-UF-ADJ-CPL

When ordering Future Automation brackets for Lutron 100 / 150 / 200CW Coupled Shades please ensure you order the correct quantities of each type of bracket from Future Automation.

Also ensure the shades are ordered without brackets supplied from Lutron.

For each set of shades that are coupled together using 1 drive; use the below calculation for each bracket type.

SB-L100-UF-ADJ = 1 pair
SB-L100-UF-ADJ-CPL = X - 1 (where X = total no. shades)

