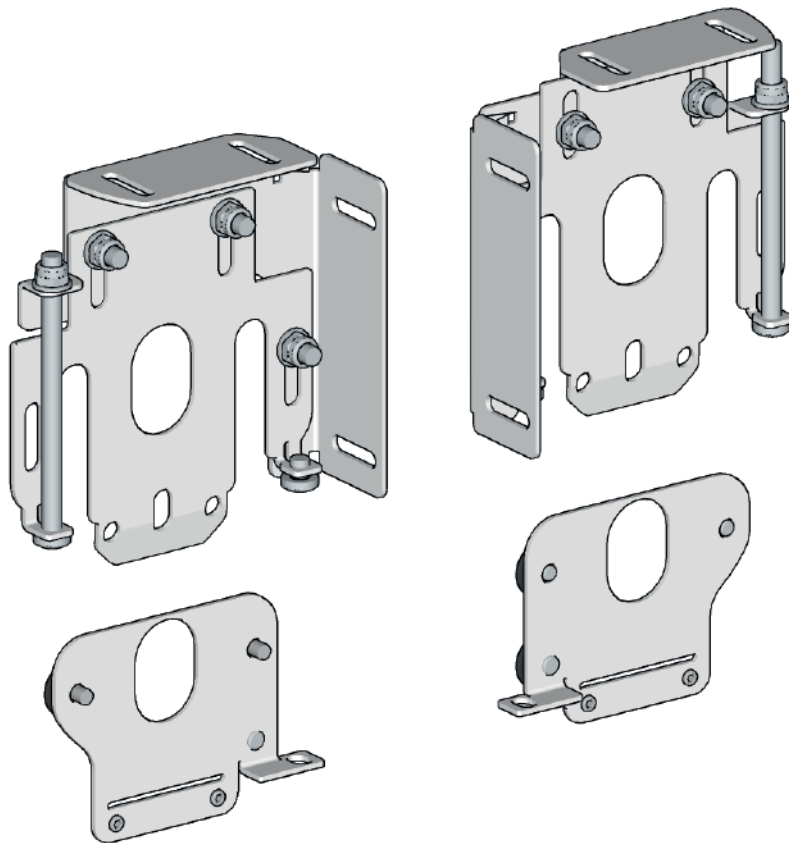




future automation

SB-L100-UF-ADJ

LUTRON100 COMPATIBLE ADJUSTABLE SHADE
BRACKET KIT



INSTALLATION INSTRUCTIONS

ISSUE 001

SB-L100-UF-ADJ

PACKAGE CONTENTS

SB-L100-UF-ADJ Brackets are supplied as a pair, each pair consisting of the below;

1 - Shade Mounting Bracket (Left)

- 1.1 - Sub Bracket (Left)
- 1.2 - Mount Plate (Left)

2 - Shade Mounting Bracket (Right)

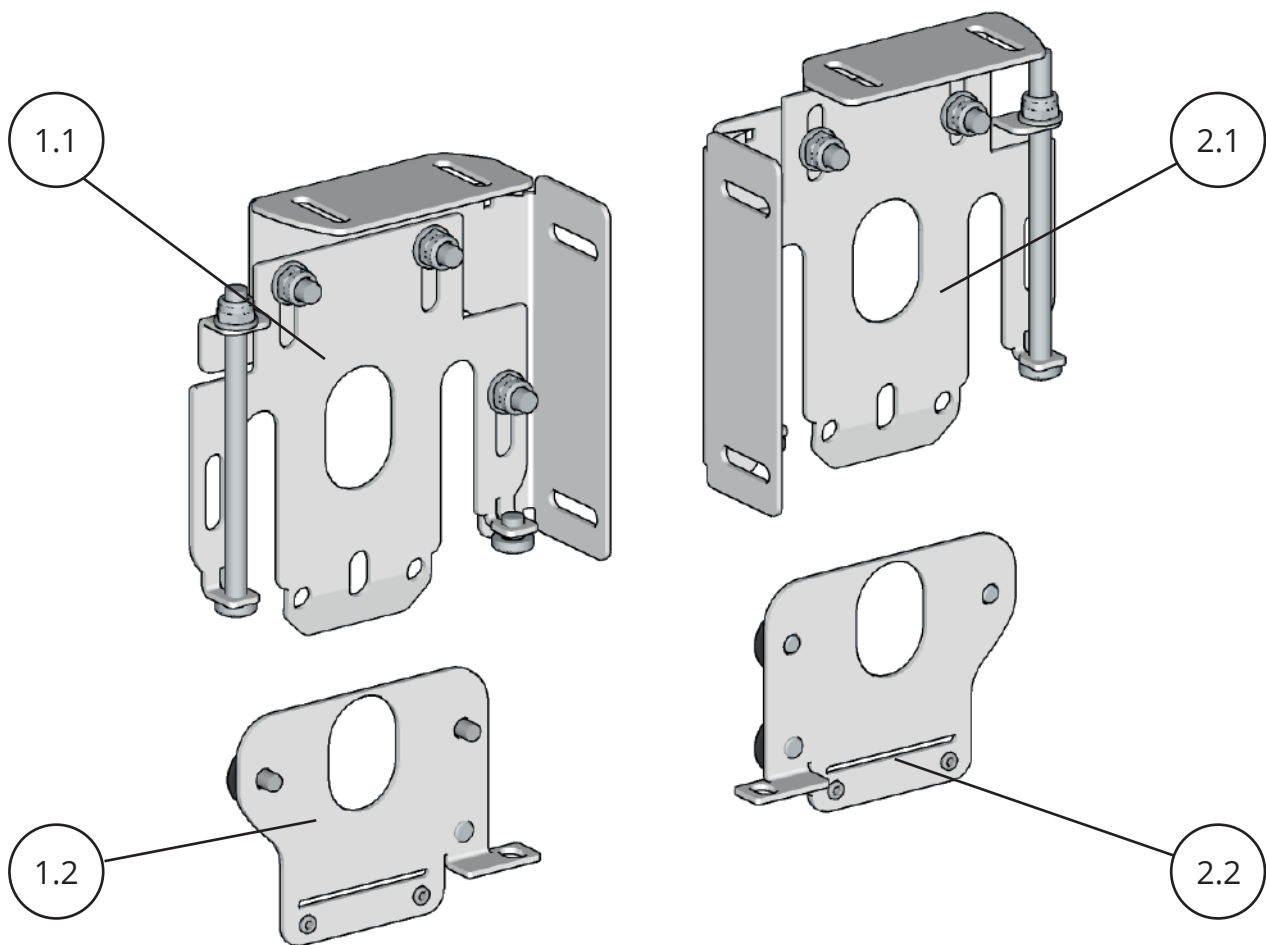
- 2.1 - Sub Bracket (Right)
- 2.2 - Mount Plate (Right)

3 - Accessories Kit (Not Shown)

- 3.1 - Qty 4 - Plastic Guide Bush
- 3.2 - Qty 2 - M5 x 6mm Pozi Thread Forming Bolt
- 3.3 - Qty 2 - M4 x 10mm Countersunk Machine Bolt
- 3.4 - Qty 2 - No.10 x 5/8th Countersunk Self Tapping Bolt

Required, But Not Supplied;

- Lutron two-part idler adjuster bracket assembly (Supplied with Lutron shades)

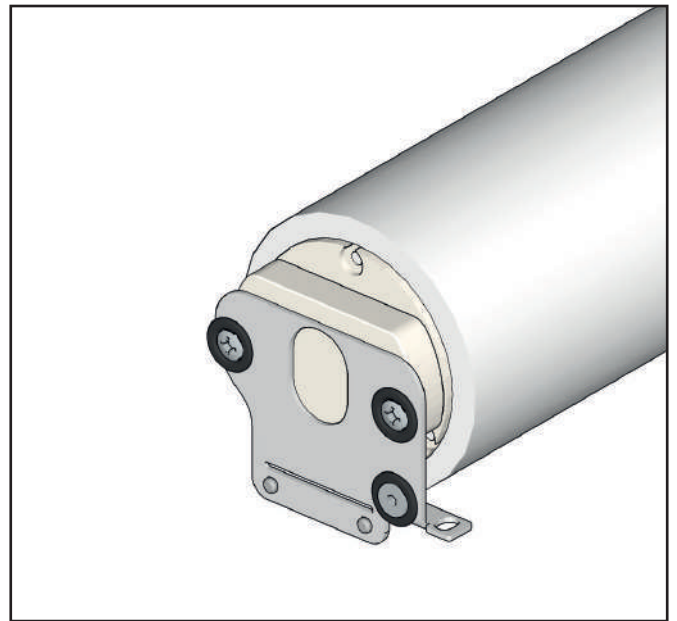
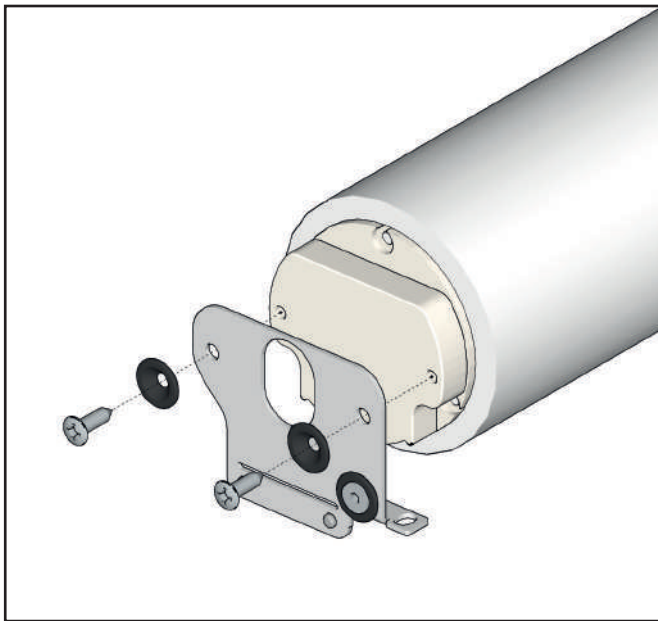


SB-L100-UF-ADJ

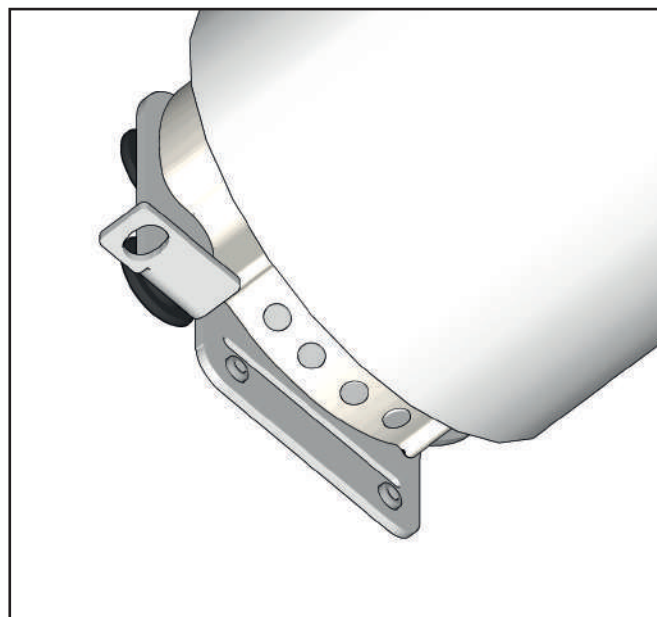
MOTOR END BRACKET FIXING

- 1** Take required **Mount Plate** (Left or Right) that you wish to mount to the motor end of the Lutron100 shade.
- 2** Attach the **Mount Plate** to the end of the Lutron100 motor as shown below, using two of the supplied **Plastic Guide Bushes** and two of the supplied **No.10 x 5/8th Countersunk Self Tapping Bolts**.

The fixings holes in the **Mount Plate** will line up with the fixing holes in the end of the Lutron100 motor.



- 3** Ensure that the **Mount Plate** is fitted so that the small folded tab on it is on the same side of the motor as the motor control buttons, and that the **Plastic Guide Bushes** are fitted the correct way round, as shown below.

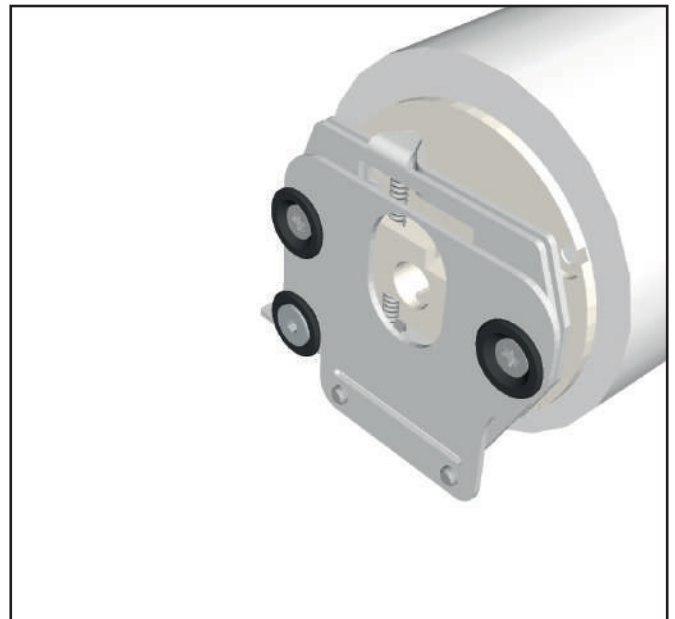
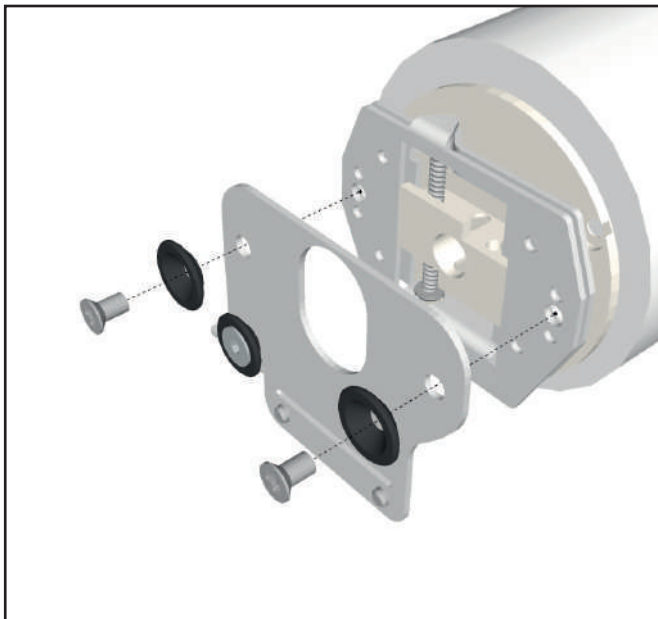


SB-L100-UF-ADJ

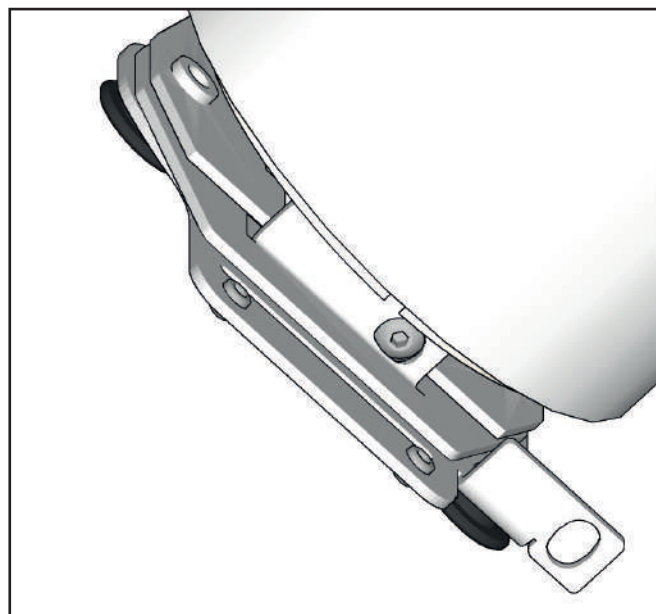
IDLER END BRACKET FIXING

- 1** Take required **Mount Plate** (Left or Right) that you wish to mount to the idler end of the Lutron100 shade.
- 2** Attach the **Mount Plate** to the end of the Lutron100 idler as shown below, using two of the supplied **Plastic Guide Bushes** and two of the supplied **M4 x 10mm Countersunk Machine Bolts**.

The fixings holes in the **Mount Plate** will line up with the fixing holes in the two-part idler adjuster bracket assembly that comes pre-fitted to the Lutron100 Idler.



- 3** Ensure that the **Mount Plate** is fitted so that the small folded tab on it is on the same side of the idler as the idler adjust bolt, and that the **Plastic Guide Bushes** are fitted the correct way round and that the adjuster bolt is accessible from below, as shown.



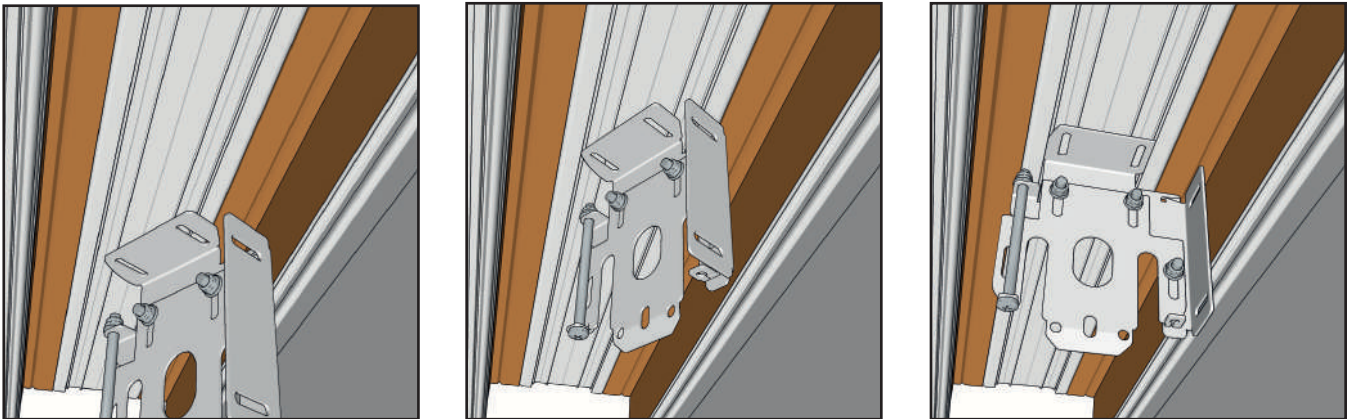
SB-L100-UF-ADJ

SUB BRACKET INSTALLATION

- 1** Take the two **Sub Brackets** and make sure that you are fitting them in the correct place to interface with the matching left or right **Mount Plates** already fitted to the Motor and Idler ends of the shade.
- 2** Fit the left and right **Sub Bracket** in place using the methods below, depending on the desired fixing type. Measure the end to end length of the shade, including the fitted **Mount Plates** to get the correct spacing for the inside faces of the **Sub Brackets**.

2A Future Automation UniChannel Fixing; SB-L100-UF-ADJ **Sub Brackets** are designed to easily twist in to the Bracket Mount Rail in Future Automation's UniChannel recessed shade pocket system.

Simply offer each **Sub Bracket** up to the Bracket Mount Rail in the top face of the UniChannel at a slight angle and then twist the bracket counter clockwise to lock into place.



Each **Sub Bracket** can be repositioned by twisting it clockwise to unlock, then sliding it along the Bracket Mount Rail to the desired position before twisting back to lock into place.



For additional security, the **Sub Brackets** can be secured into the Bracket Mount Rail by tightening the pre-installed grub/set screws or by putting suitable fixings (not supplied) through the slots in the top return on the bracket into the aluminium of the Bracket Mount Rail.

SB-L100-UF-ADJ

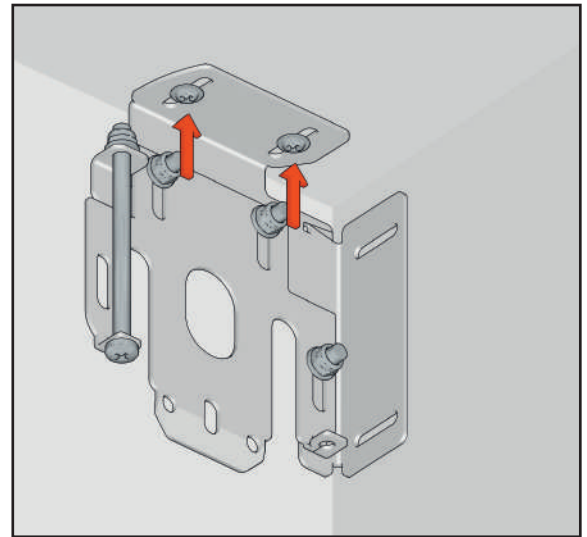
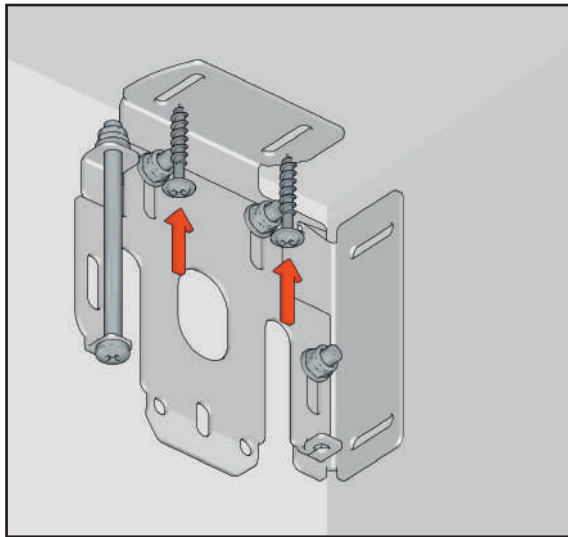
SUB BRACKET INSTALLATION (CONT.)

2B

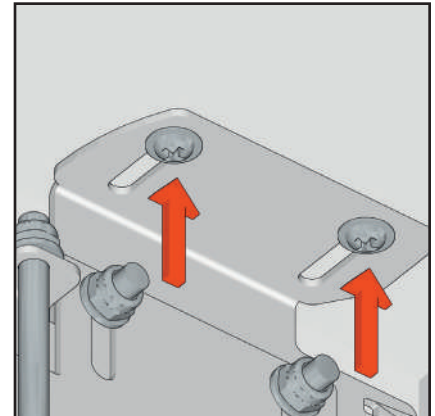
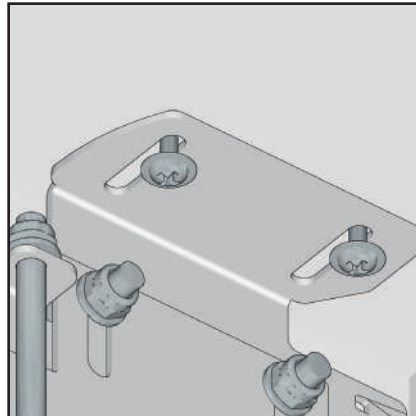
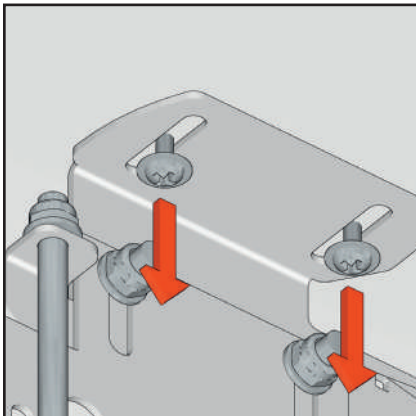
Ceiling/Top Fixing;

SB-L100-UF-ADJ **Sub Brackets** feature a folded top return with fixing slots to allow the brackets to be secured upwards into a suitable fixing substrate above.

Simply put two suitable fixings (not supplied) upwards through these slots to secure each **Sub Bracket** in place.



The fixings can be loosened and each **Sub Bracket** position adjusted slightly forwards or back using the slots, if their position needs to be fine tuned.



SB-L100-UF-ADJ

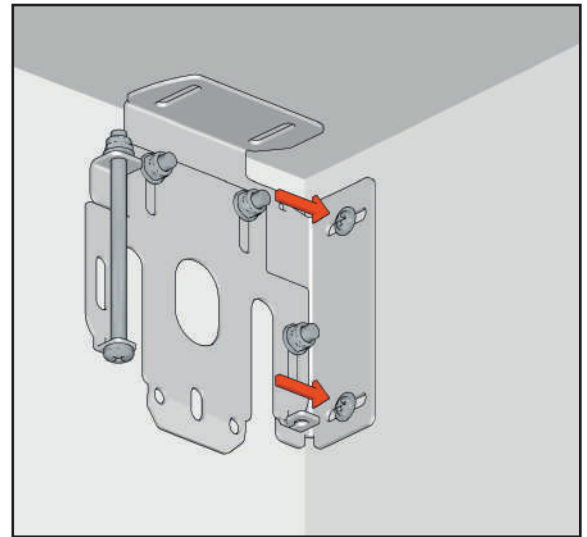
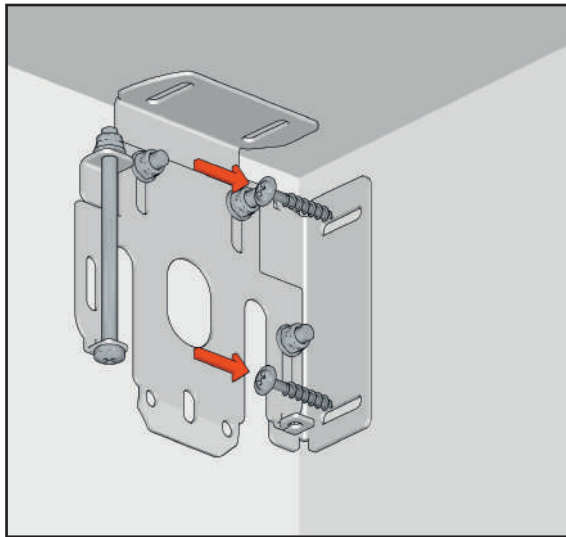
SUB BRACKET INSTALLATION (CONT.)

2C

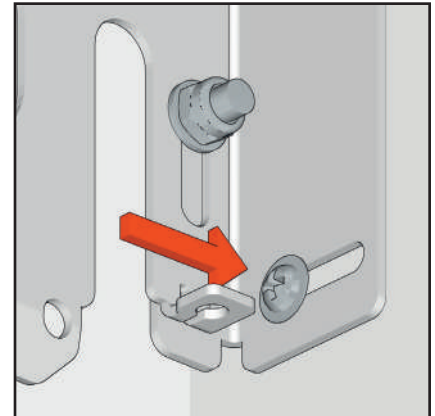
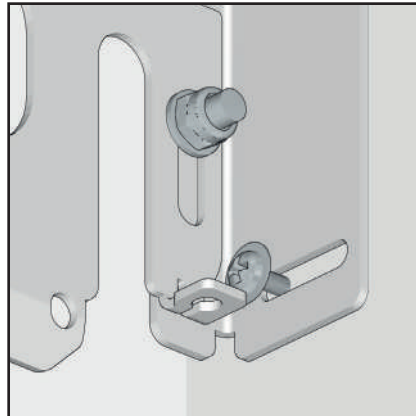
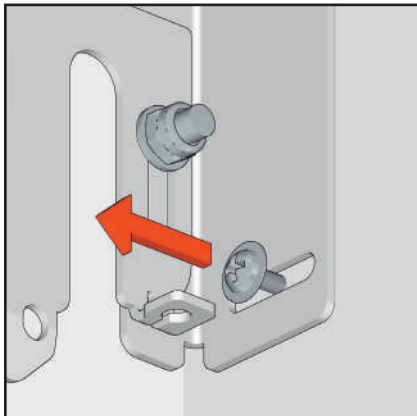
Wall/Face Fixing:

SB-L100-UF-ADJ **Sub Brackets** feature a folded side return with fixing slots to allow the brackets to be secured outwards into a suitable fixing substrate behind.

Simply put two suitable fixings (not supplied) outwards through these slots to secure each **Sub Bracket** in place.



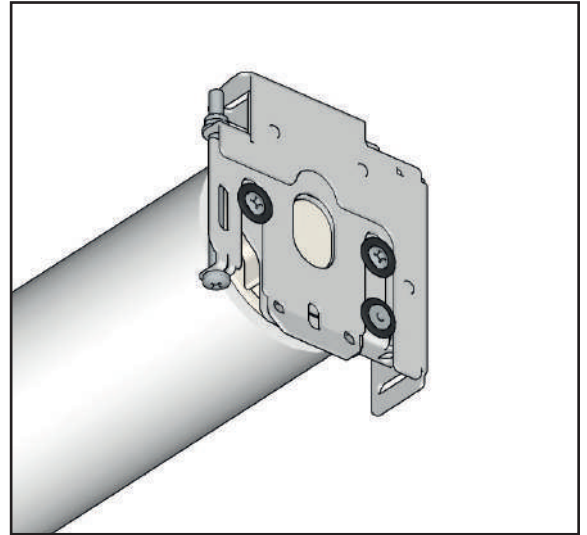
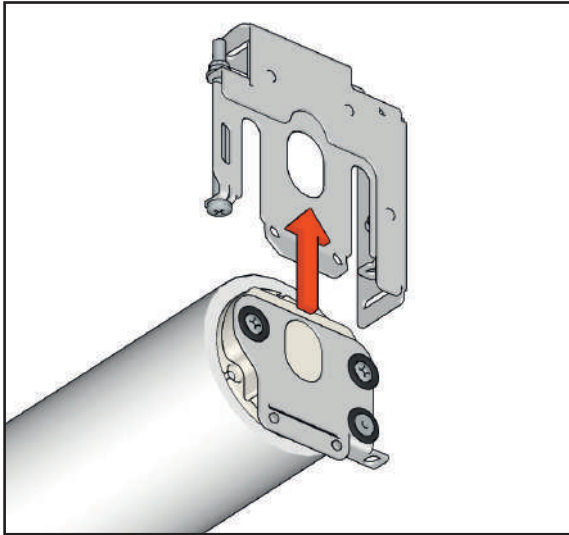
The fixings can be loosened and each **Sub Bracket** position adjusted slightly left or right using the slots, if their position needs to be fine tuned.



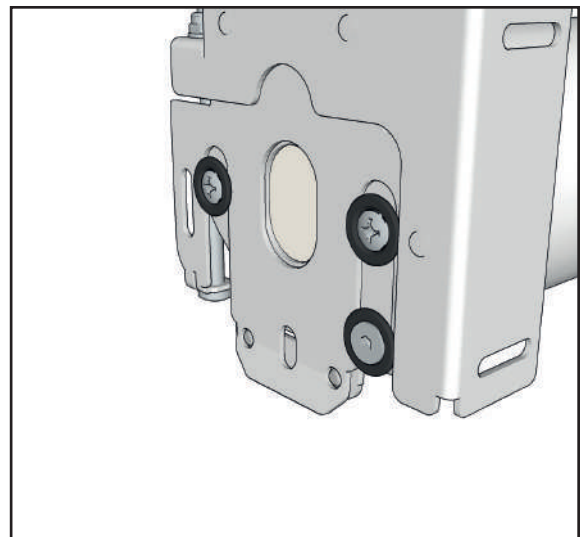
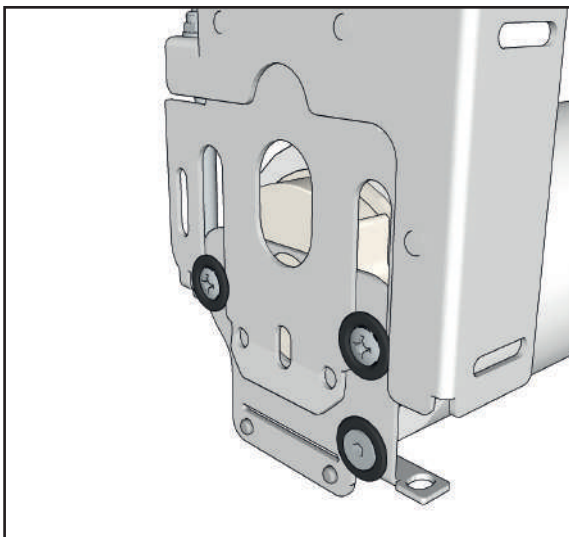
SB-L100-UF-ADJ

SHADE INSTALLATION

- 1 Once the **Mount Brackets** are installed onto the Lutron100 Motor and Idler, and the **Sub Brackets** are in position in the desired mounting location, the shade and **Mount Brackets** can be lifted directly upwards to engage into the **Sub Brackets** from below.



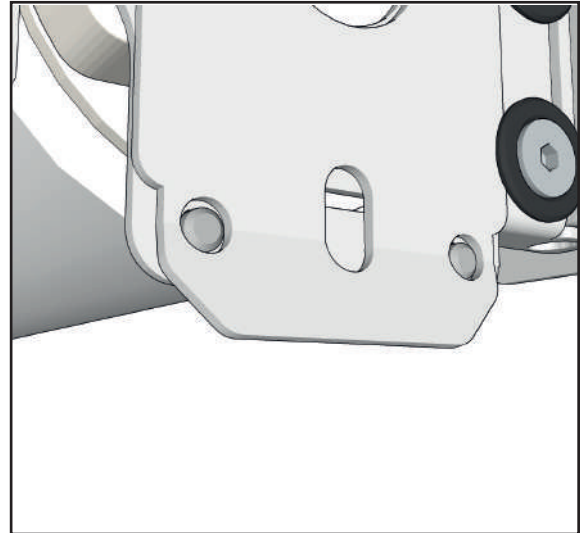
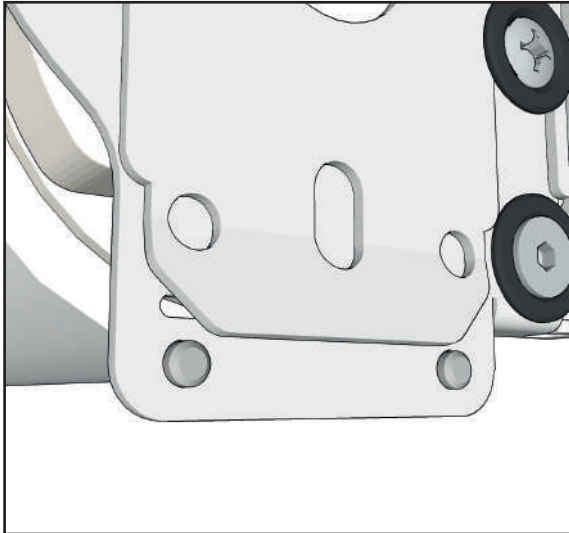
- 2 Each **Sub Bracket** has two large open slots that the **Plastic Guide Bushes** on the **Mount Bracket** will locate into while the shade is being lifted up into the **Sub Brackets**.



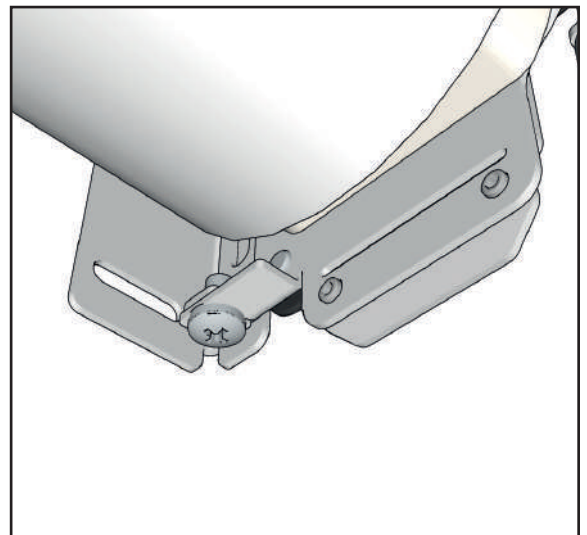
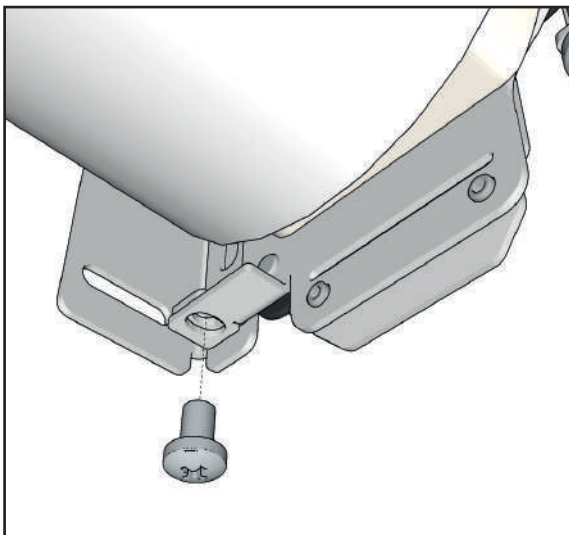
SB-L100-UF-ADJ

SHADE INSTALLATION (CONT.)

- 3** When the **Mount Bracket** is lifted high enough up into the **Sub Bracket**, it will 'click' into place using a pair of set screws that are pre-installed in the **Mount Bracket**. These set screws will temporarily hold the shade in place until a securing bolt is installed.



- 4** Once the Mount Bracket has engaged onto these set screws, one of the supplied **M5 x 6mm Pozi Thread Forming Bolts** can be installed into the folded return on the bottom of each of the **Mount Brackets** to lock it securely to the **Sub Bracket**.

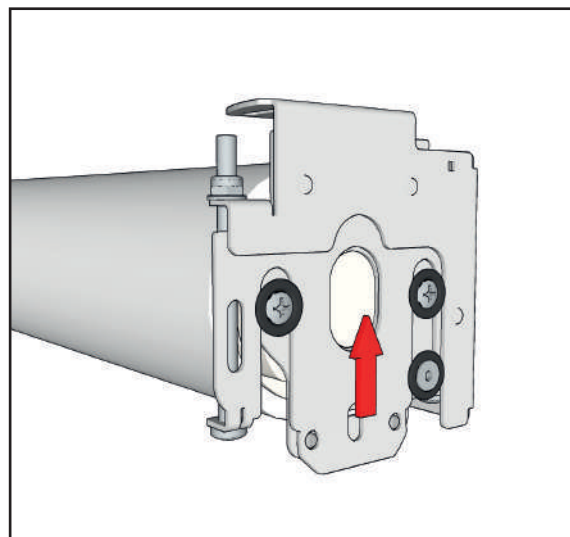
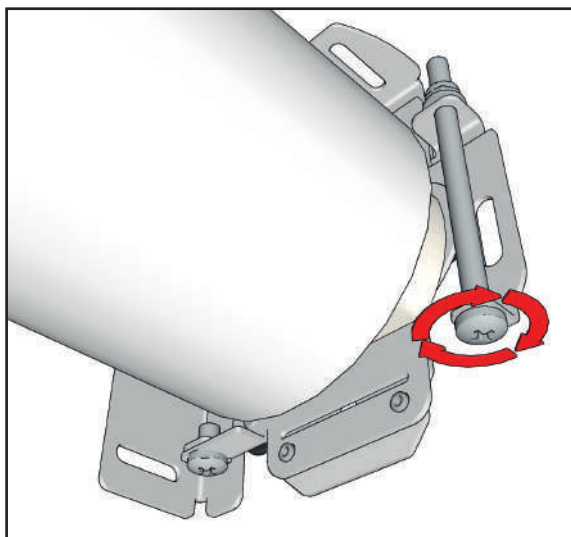


- 5** Ensure that the **M5 x 6mm Pozi Thread Forming Bolts** are secured into the brackets on both the motor and idler ends of the shade.

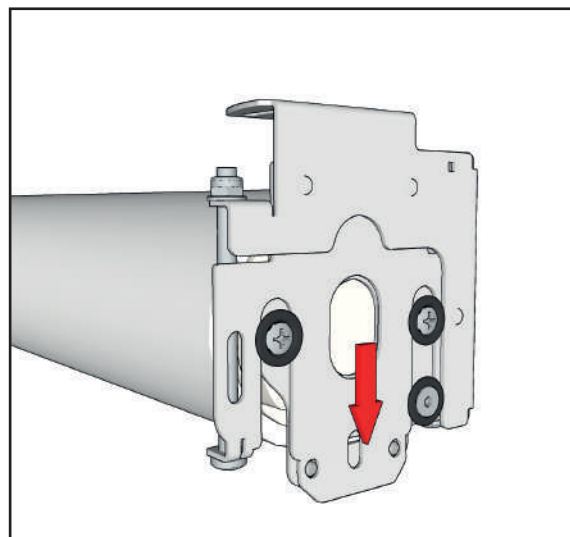
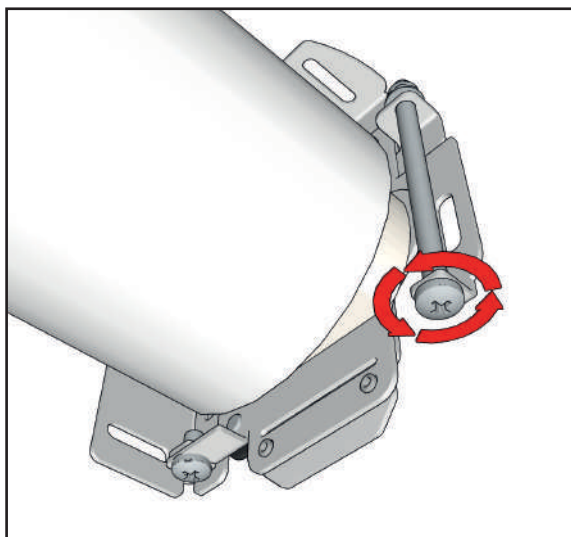
SB-L100-UF-ADJ

SHADE LEVELING

- 1** Once the shade is fitted and locked into place with the securing bolts, each bracket can be adjusted up or down from below as required to level the shade.
- 2** The long pre-installed **Adjuster Bolt** on each bracket (accessed from below) can be rotated clockwise to raise that end of the shade.



- 3** Or counter-clockwise to lower that end of the shade. The brackets offer up to 13.5mm (9/16") total adjustment on both ends of the shade.



NOTES:



EUROPEAN OFFICE

Address:

Unit 6-8
Brunel Road
Bedford
Bedfordshire
MK41 9TG

Phone: +44 (0) 1438 833577

Email: info@futureautomation.co.uk

Office Hours:

Mon - Fri 8:00 to 17:30 GMT
Saturday & Sunday - Closed

NORTH AMERICAN OFFICE

Address:

Enterprise Park
127 Venture Drive
Dover
NH
03820

Phone: +1 (603) 742 9181

Email: info@futureautomation.net

Office Hours:

Mon - Fri 7:00 to 17:00 EST
Saturday & Sunday - Closed