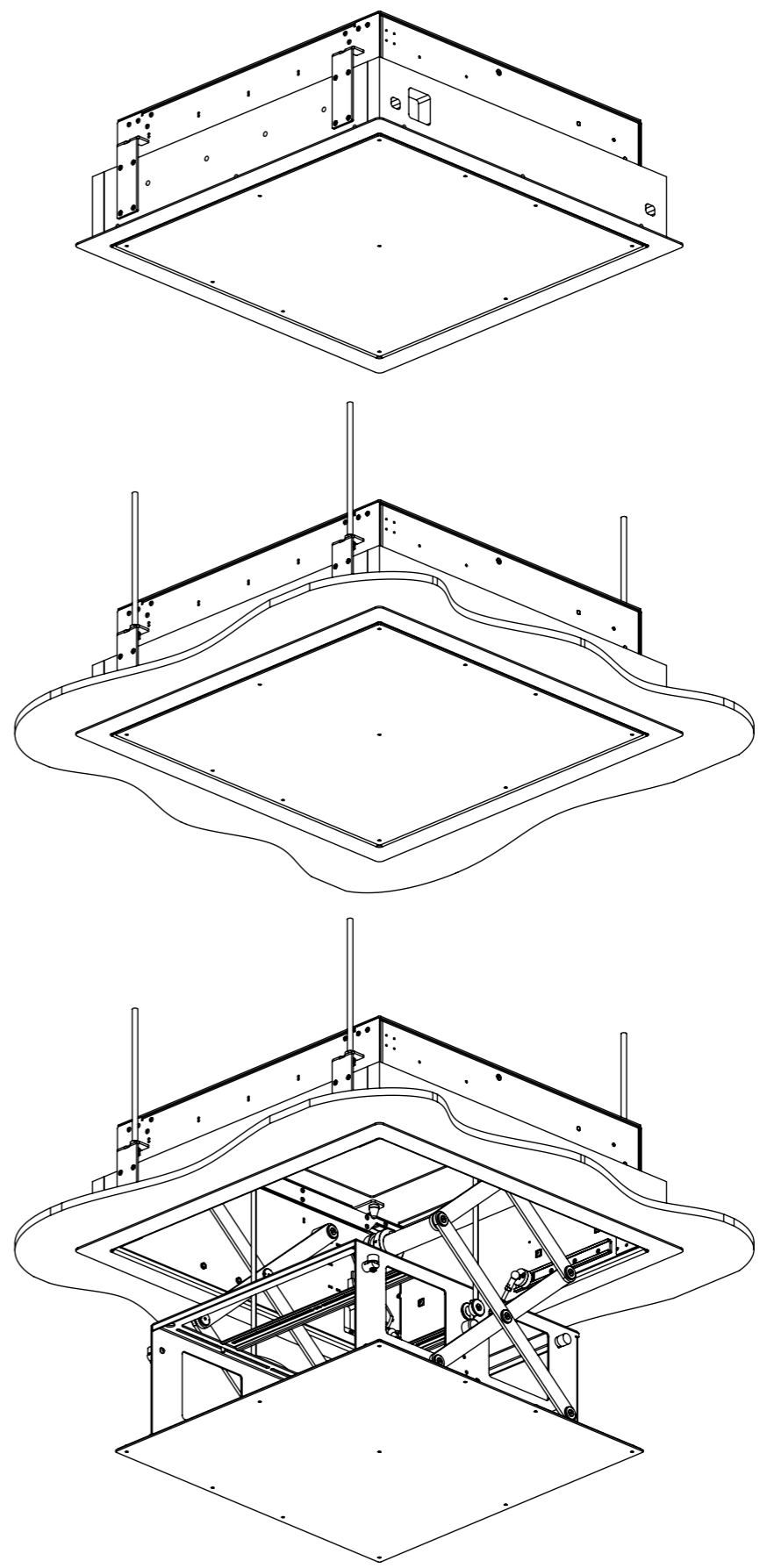
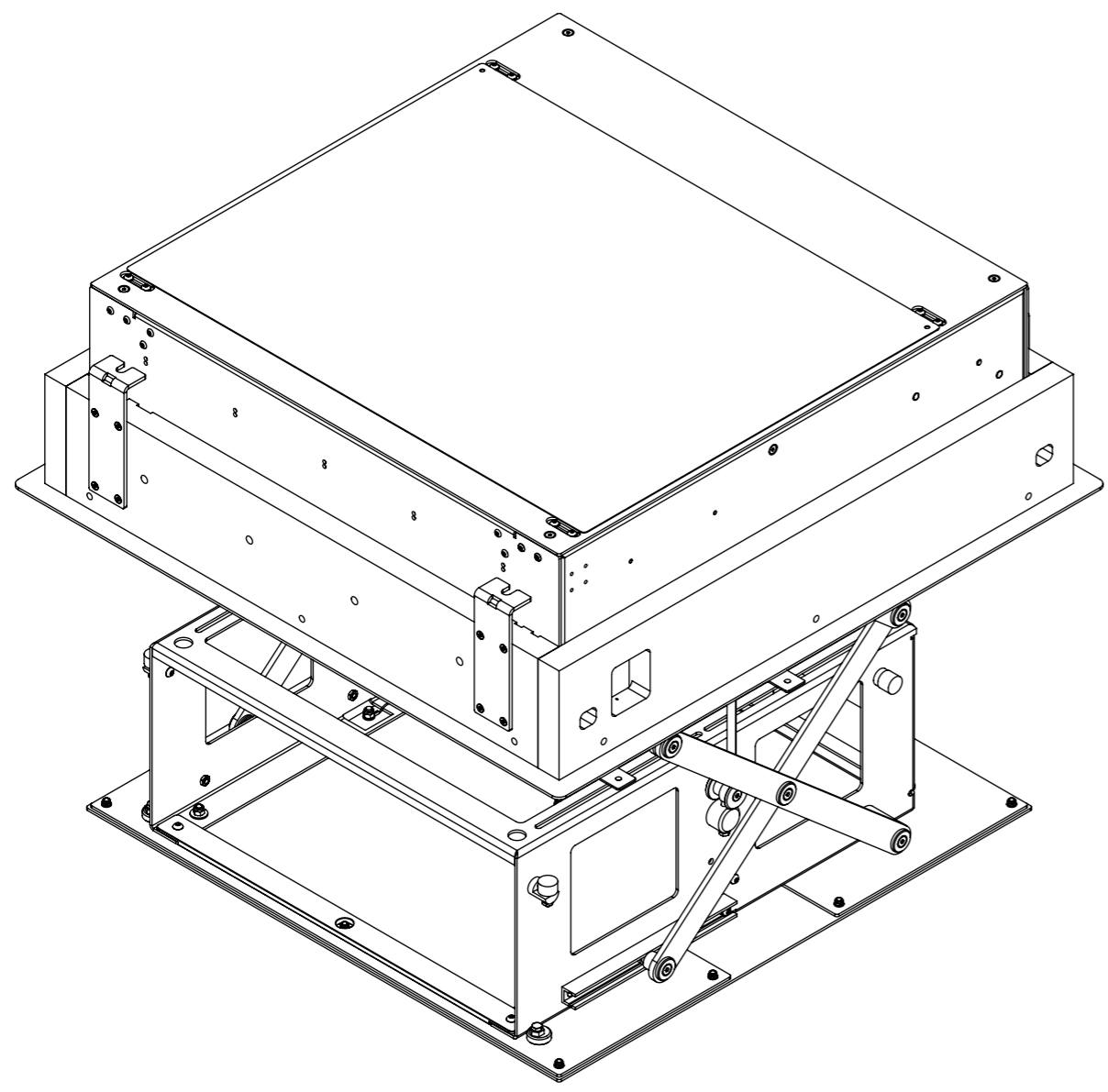


# PDR2-COM

## PROJECTOR DROP RANGE COMMERCIAL



# PDR2-COM

## PROJECTOR DROP RANGE COMMERCIAL



SPECIFICATION	MEASUREMENTS
Product Dimensions	782mm (30 13/16") W x 782mm (30 13/16") L x 251mm (9 7/8") H
Recommended Maximum Projector Dimensions	420mm (16 9/16") W x 476mm (18 3/4") L x 214mm (8 7/16") H
Maximum Projector Weight Capacity	15Kg (33lb)
Supplied Aluminium Infill Panel Weight	4Kg (9lb)
Maximum Speed	25mm/s
Maximum Travel From Finished Ceiling	400mm (15 3/4") - Standard 700mm (27 1/2") - Available 940mm (37") - Available
Height from Finished Ceiling	248mm (9 3/4")
Product Weight	42Kg (93lb)
Packaging Dimensions	TBC
Shipping Weight	TBC
Movement Type	Motorised
Power Supply Required	110V - 240V AC
Power Consumption Max.	120W
Power Consumption Standby	3W
Compatible Projectors	Sony VPL-XW5000ES/XW6000ES/XW7000ES
Control Options	IR Remote, RS232, Contact Closure
Product Options / Features	Specific mounts / adapters, Custom RAL paint finishes
Package Contents	Mechanism, IR remote control

# PDR2-COM

## PROJECTOR DROP RANGE COMMERCIAL

### DESIGN HIGHLIGHTS

Quick and simple mechanism installation within a suspended ceiling.

Available with three different drop options.

- Standard drop 400mm (15 3/4")
- Long drop 700mm (27 1/2")
- Extra Long drop 940mm (37")

Projector carriage can be tilted significantly once dropped.

Full cable management keeps all power and signal cables as neat and tidy as possible.

Top cover panel finishes internal void in matching white satin finish.

Slotted mounting system provides easily adjustable installation for almost any projector.

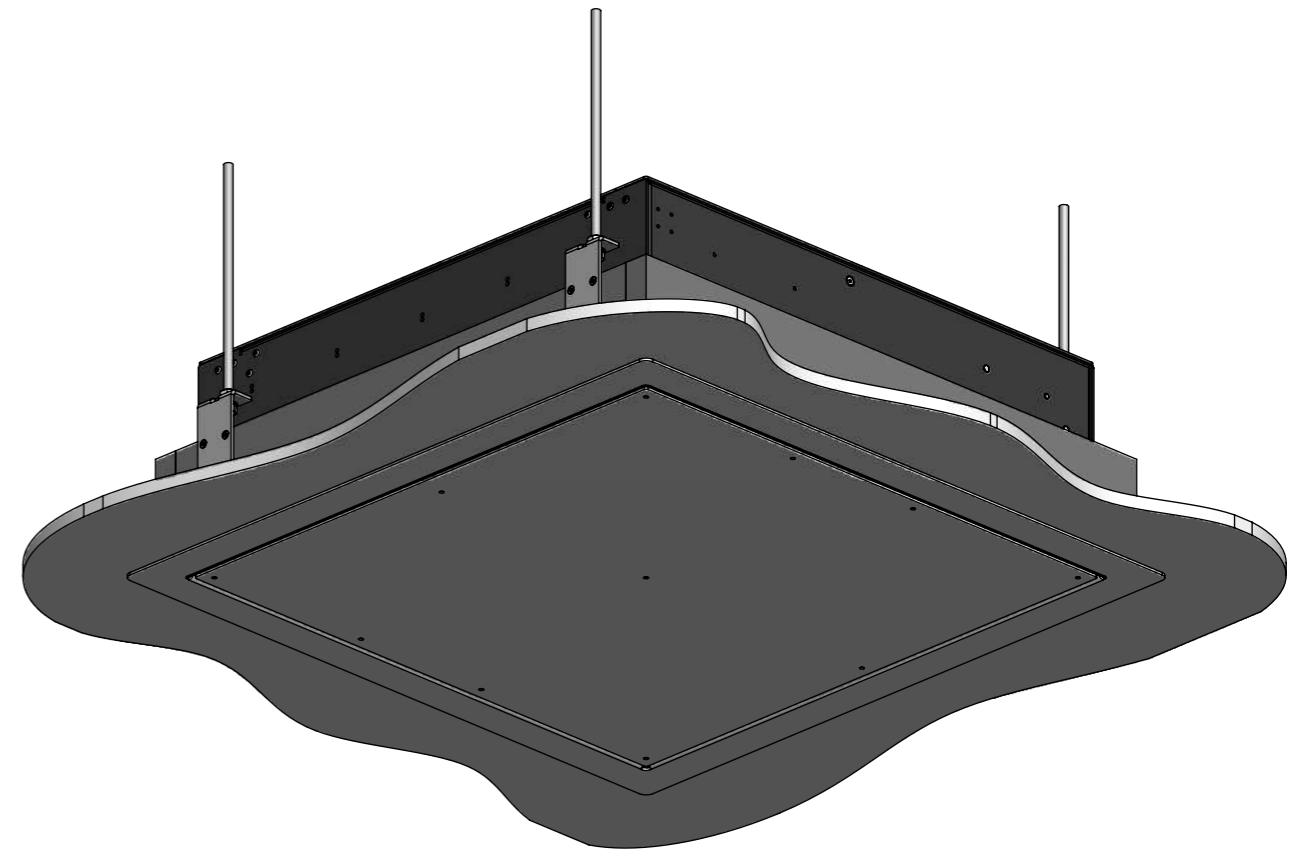
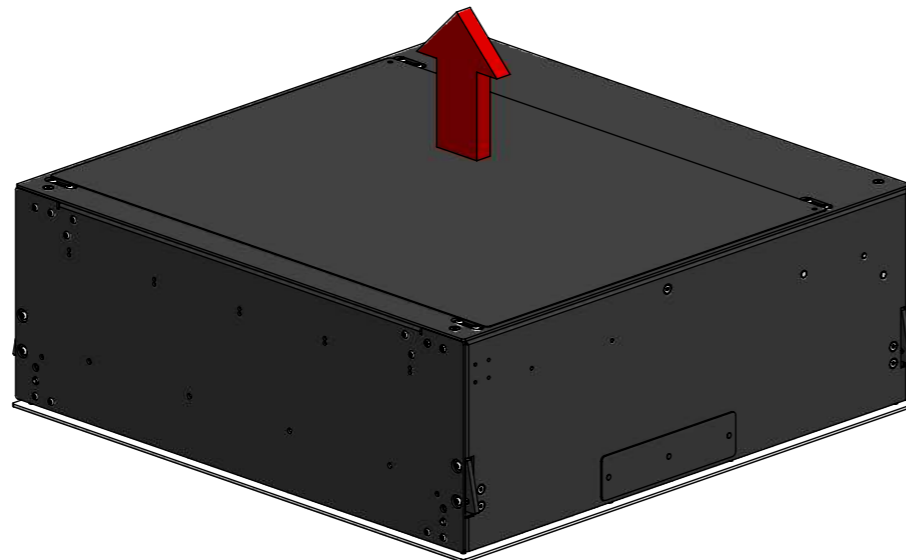
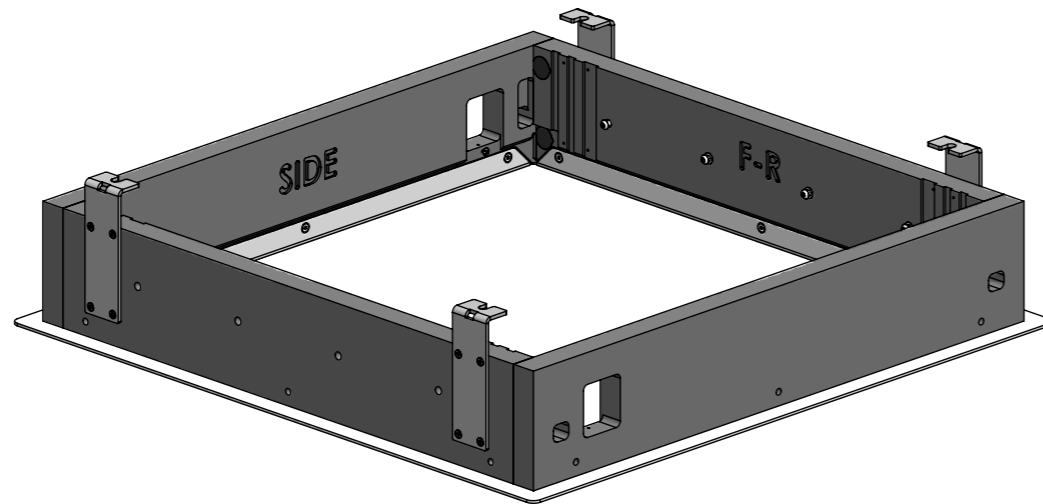
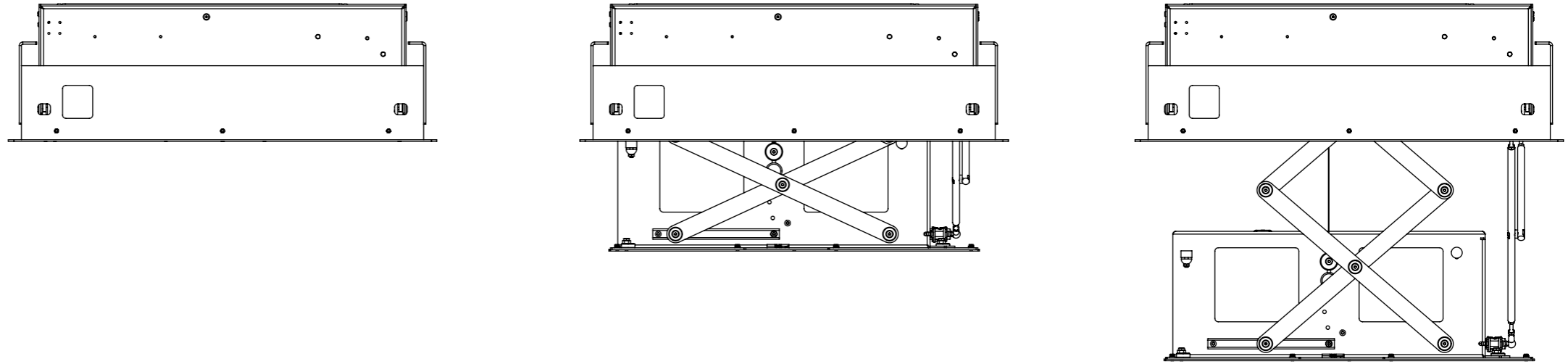
Standard control box can also control a third party product such as a projector screen.

Comes with a an on-ceiling 3mm [1/8"] flange which, as standard, is a painted RAL9910.

The bottom panel fills the aperture leaving a continuous 3mm [1/8"] shadow gap around the panel.

**For quick and simple install, mechanism easily clicks into framework.**

VIEWS BELOW SHOW ACTION FROM IN POSITION TO DOWN POSITION

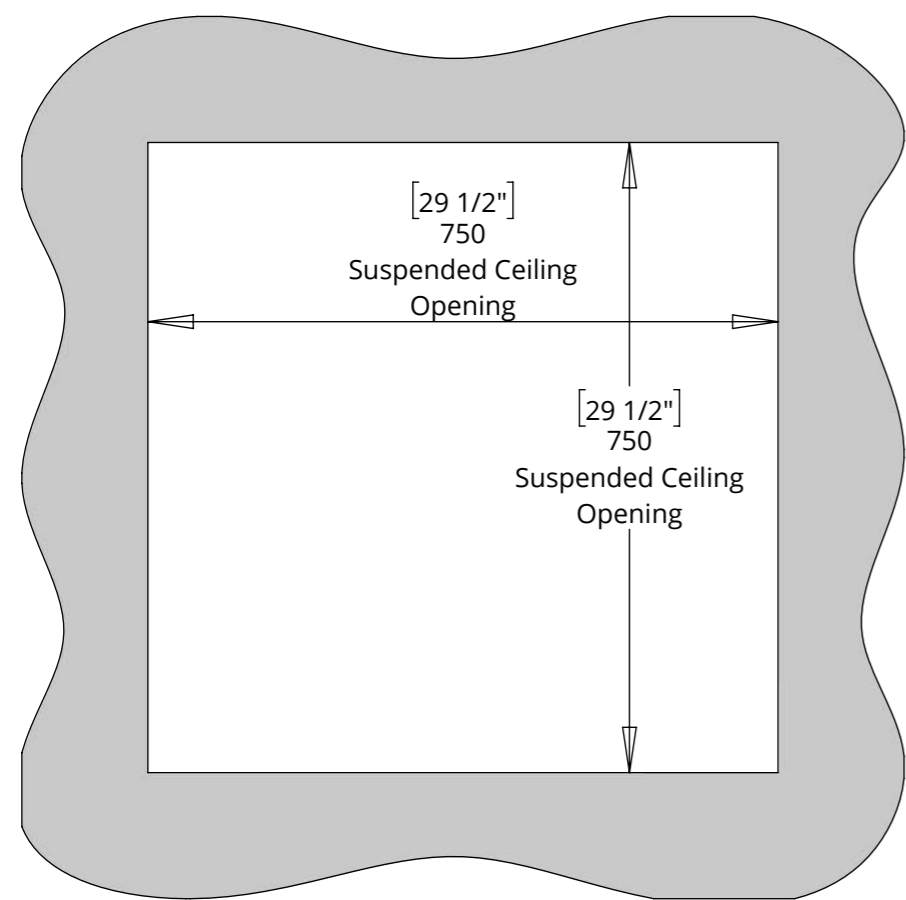


**3mm on ceiling flange with infill panel with one continuous 3mm [1/8"] shadow gap around panel.**

# PDR2-COM

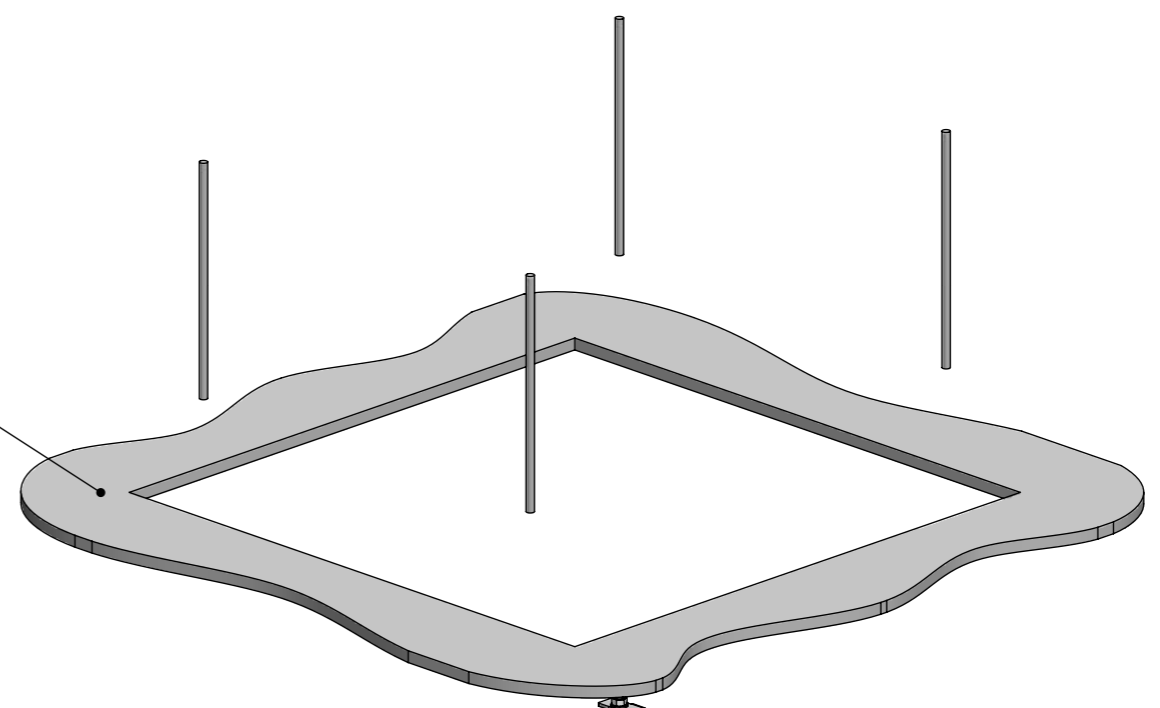
## PROJECTOR DROP RANGE COMMERCIAL

### RECESS MOUNTING

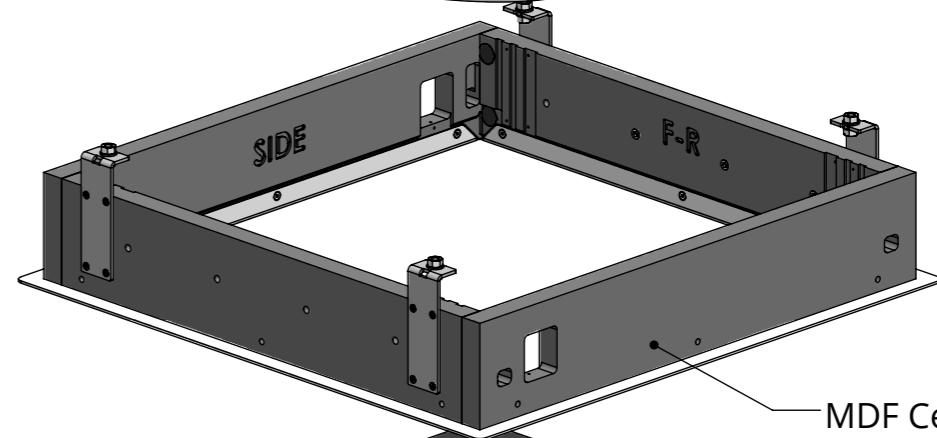


Underside View

Suspended Ceiling



[3/8"]  
Ø 10  
Studding  
(Not Supplied)



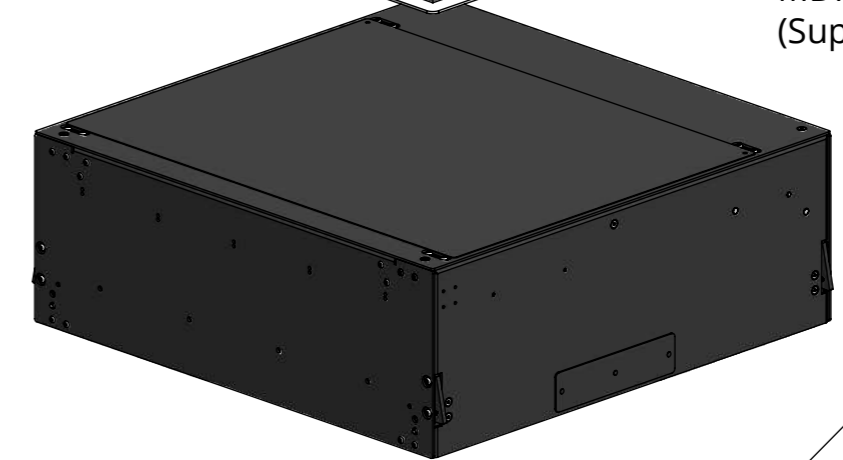
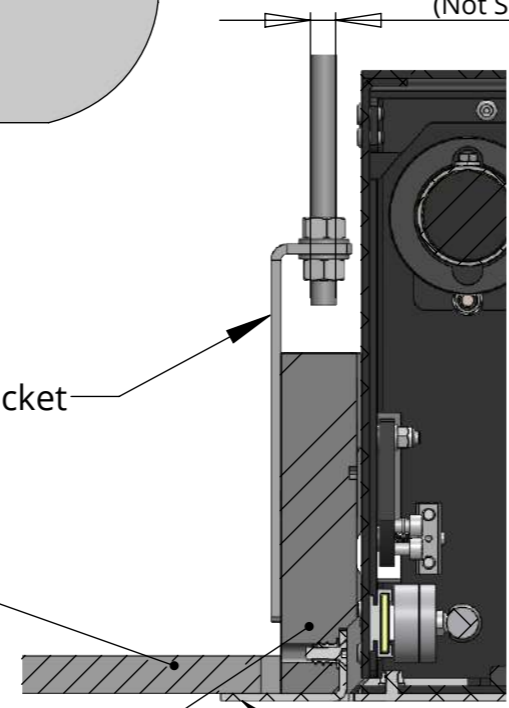
MDF Ceiling Cassette  
(Supplied)

Hanger Bracket

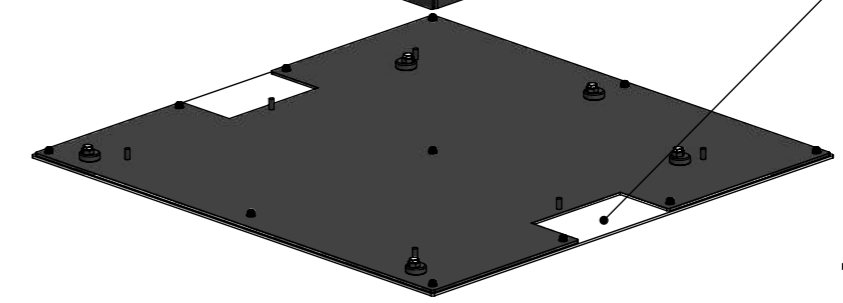
Suspended Ceiling

MDF Ceiling cassette with Sheet Metal Flange

3 [1/8"] Sheet Metal Flange



Infill Panel  
(RAL 9910, Supplied)



# PDR2-COM

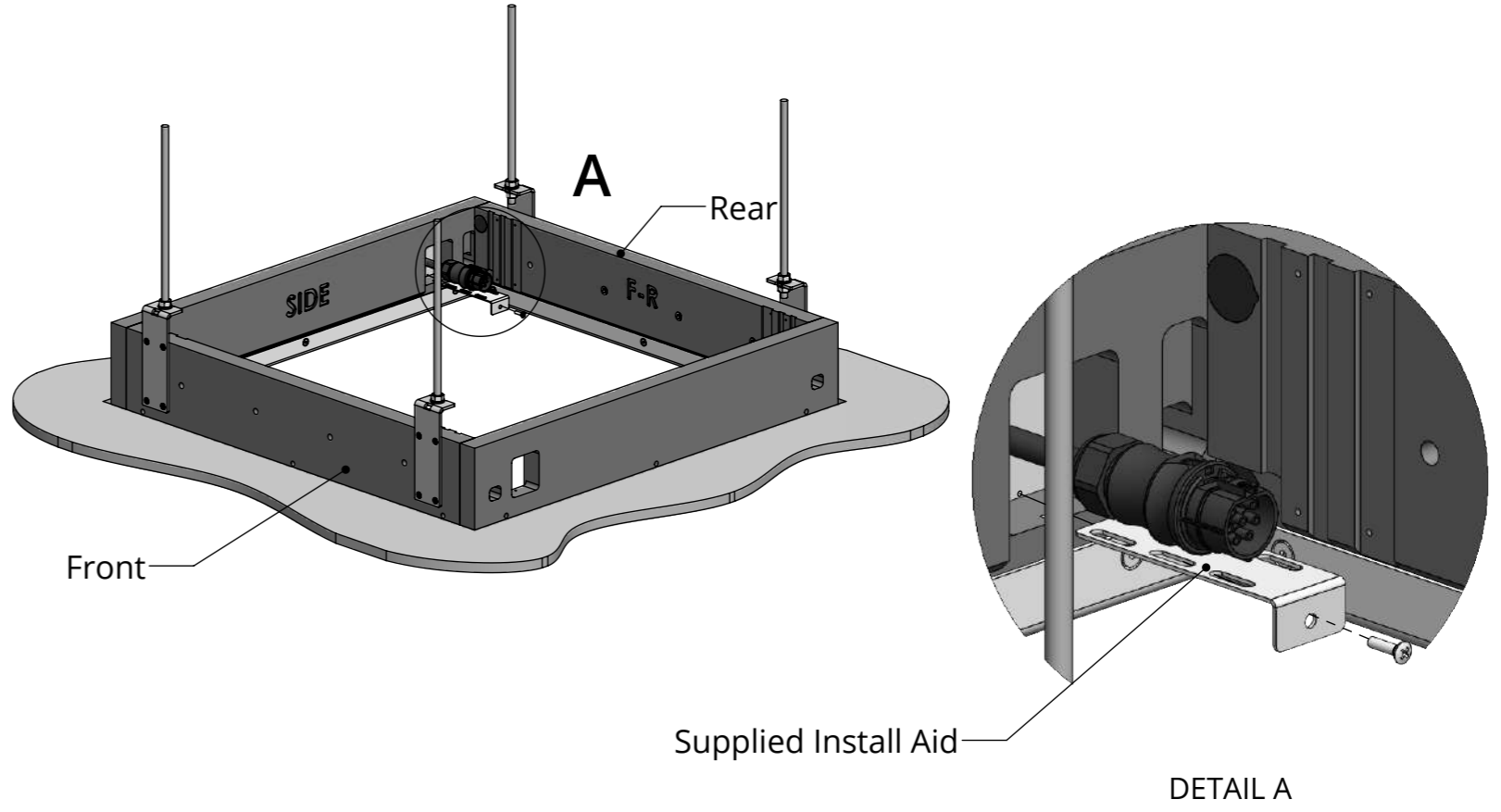
## PROJECTOR DROP RANGE COMMERCIAL

### INSTALLATION PROCEDURE

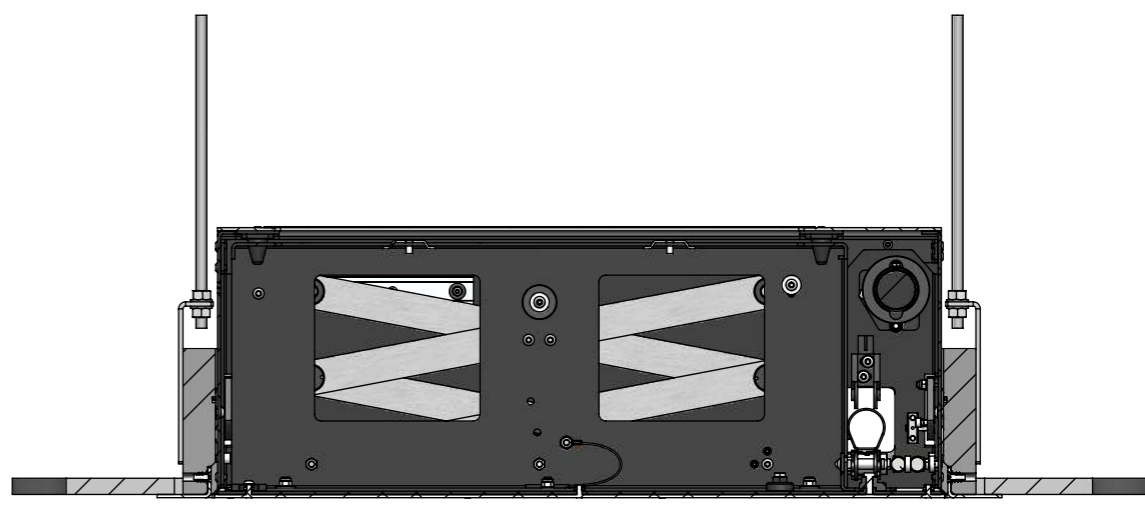
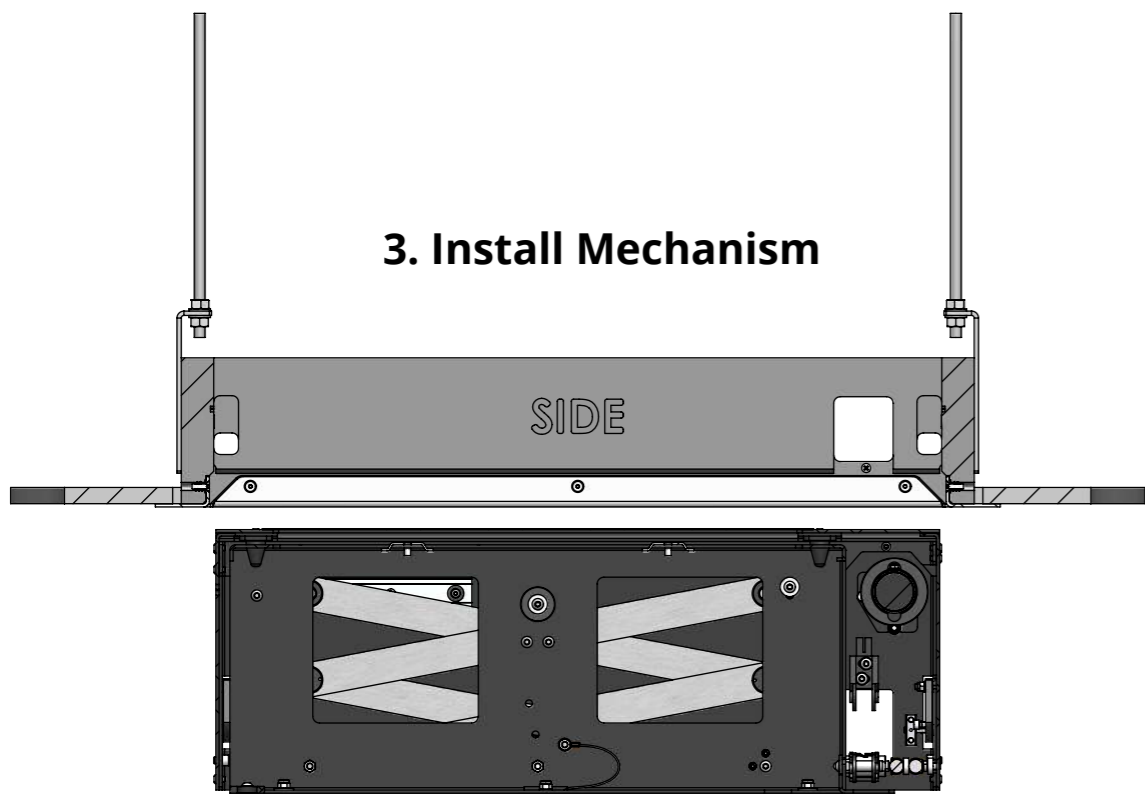
#### 1. Install MDF Cassette



#### 2. Prepare Cabling



#### 3. Install Mechanism



# PDR2-COM

## PROJECTOR DROP RANGE COMMERCIAL

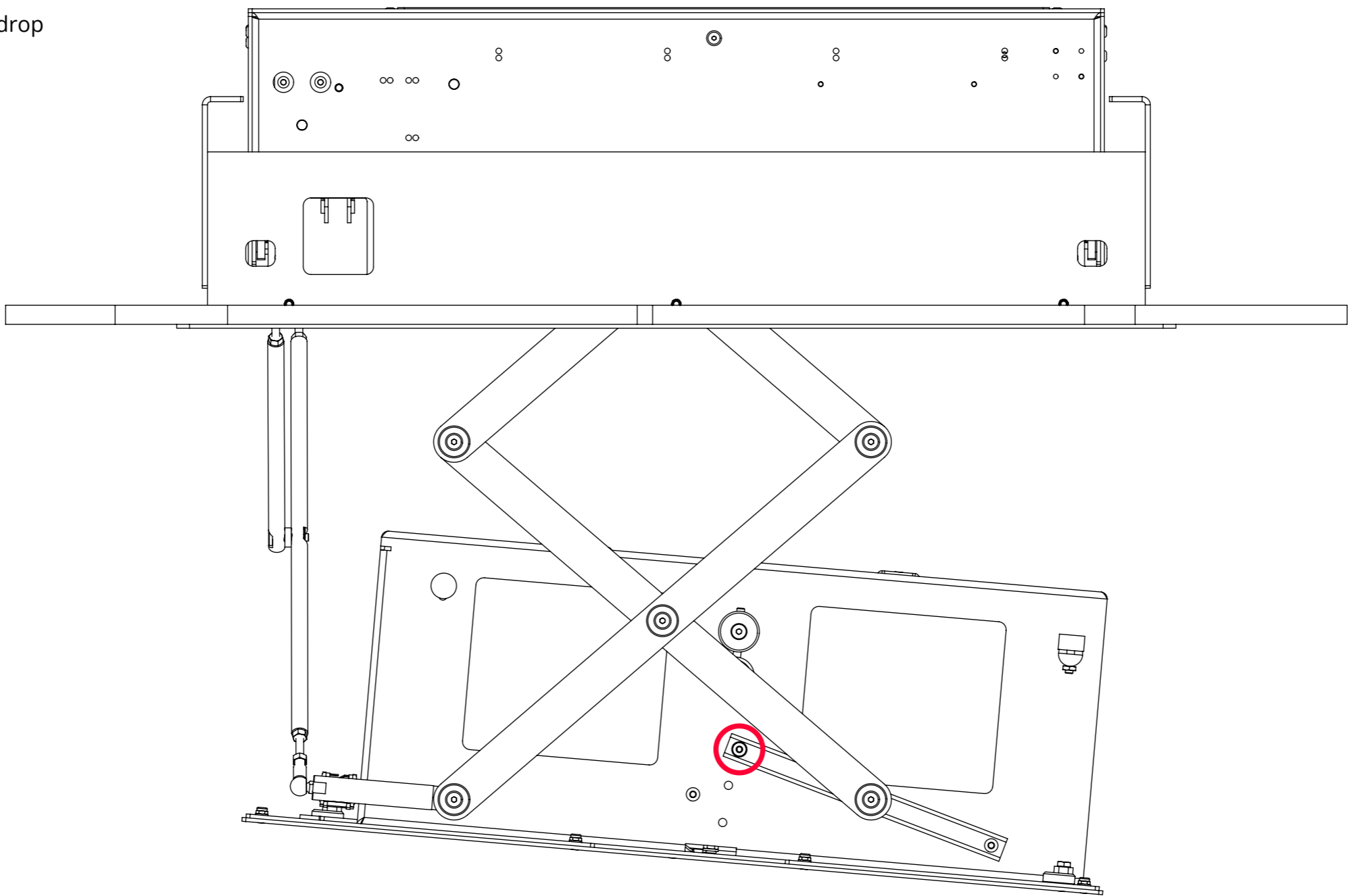


### PROJECTOR TILT

By undoing and repositioning the highlighted bolt on each side of the projector carriage, a significant tilt angle can be achieved.

This is useful when using the projector drop in rooms with high ceilings where the projector is a lot higher than the screen being viewed.

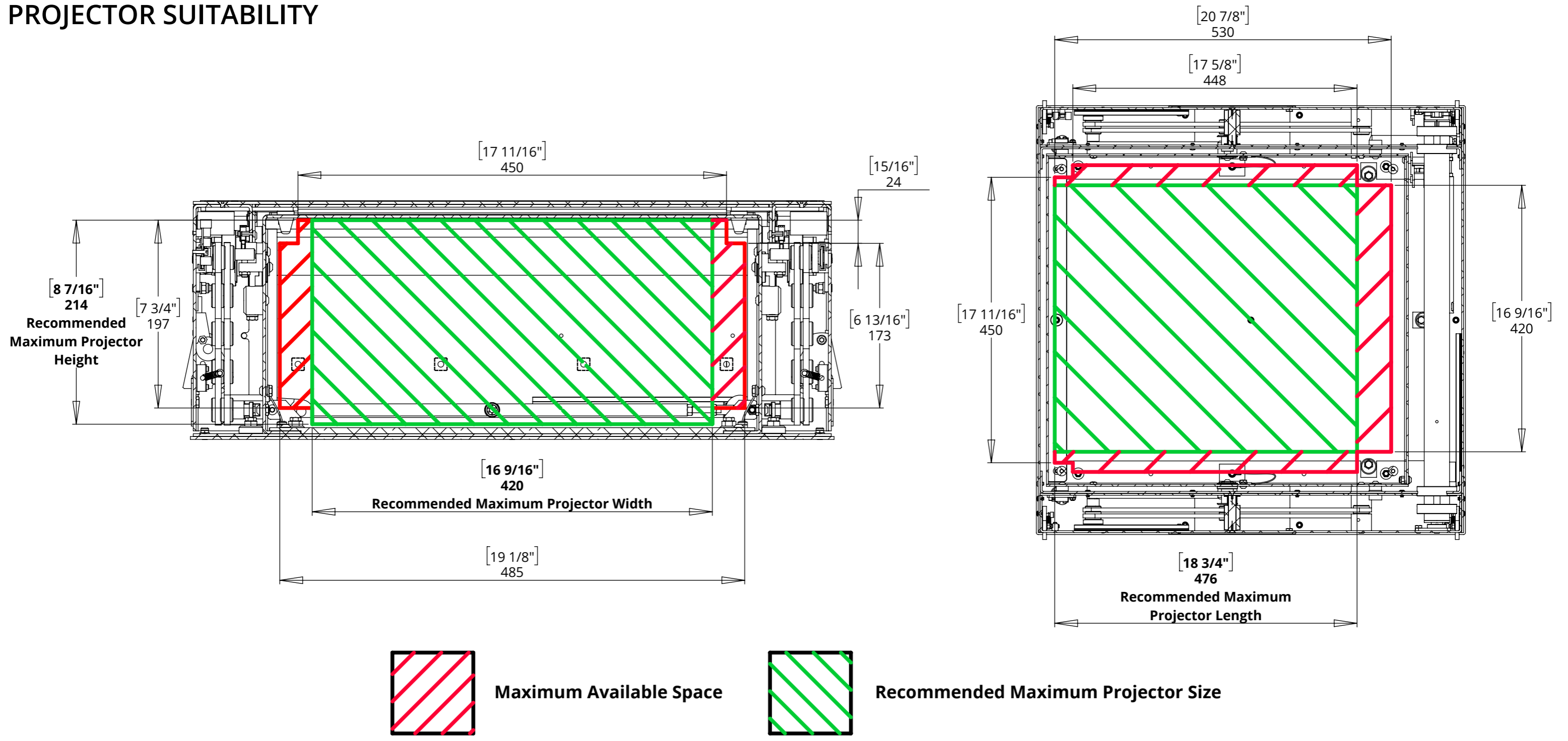
Using the tilt adjustment means the projector image must be altered using the keystone function on the projector.



# PDR2-COM

## PROJECTOR DROP RANGE COMMERCIAL

### PROJECTOR SUITABILITY



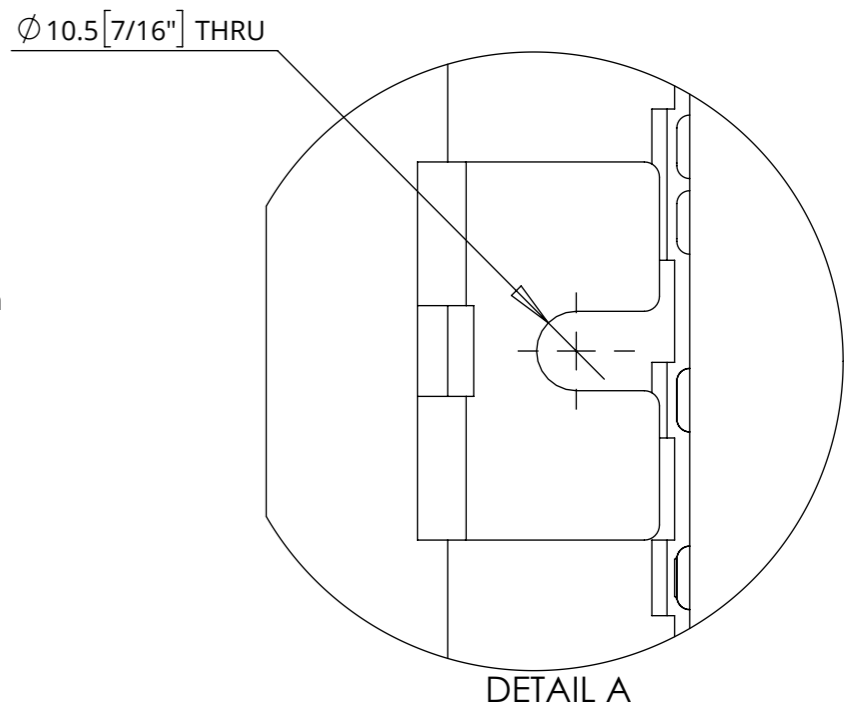
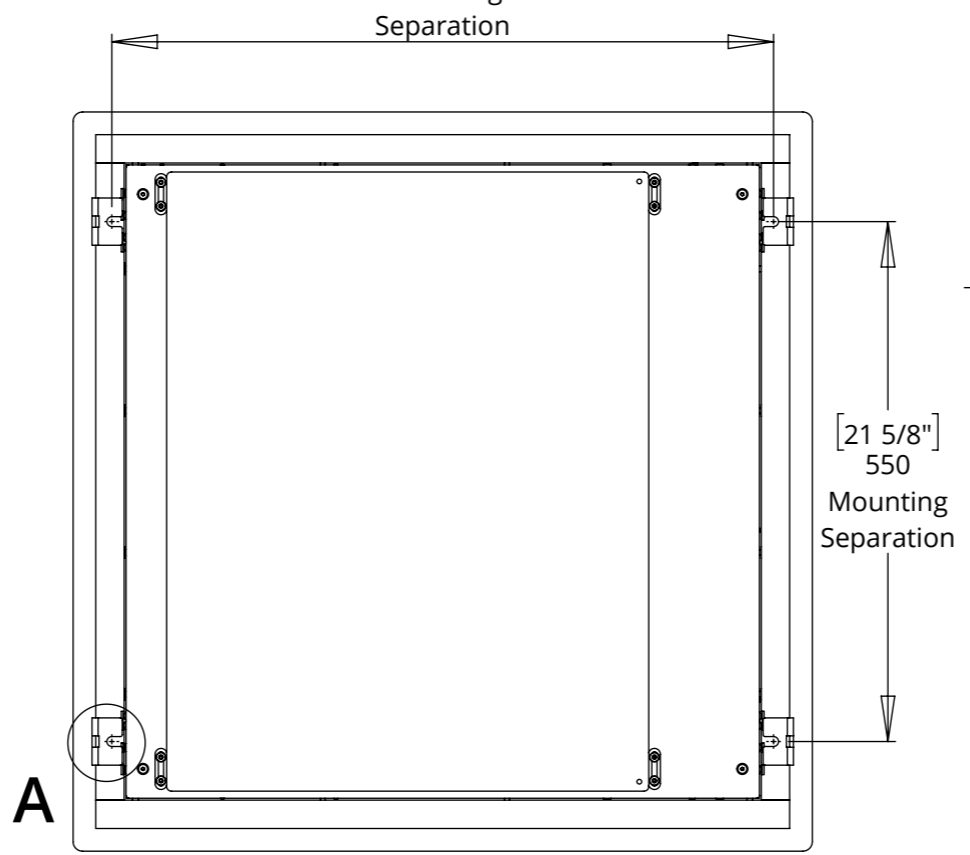
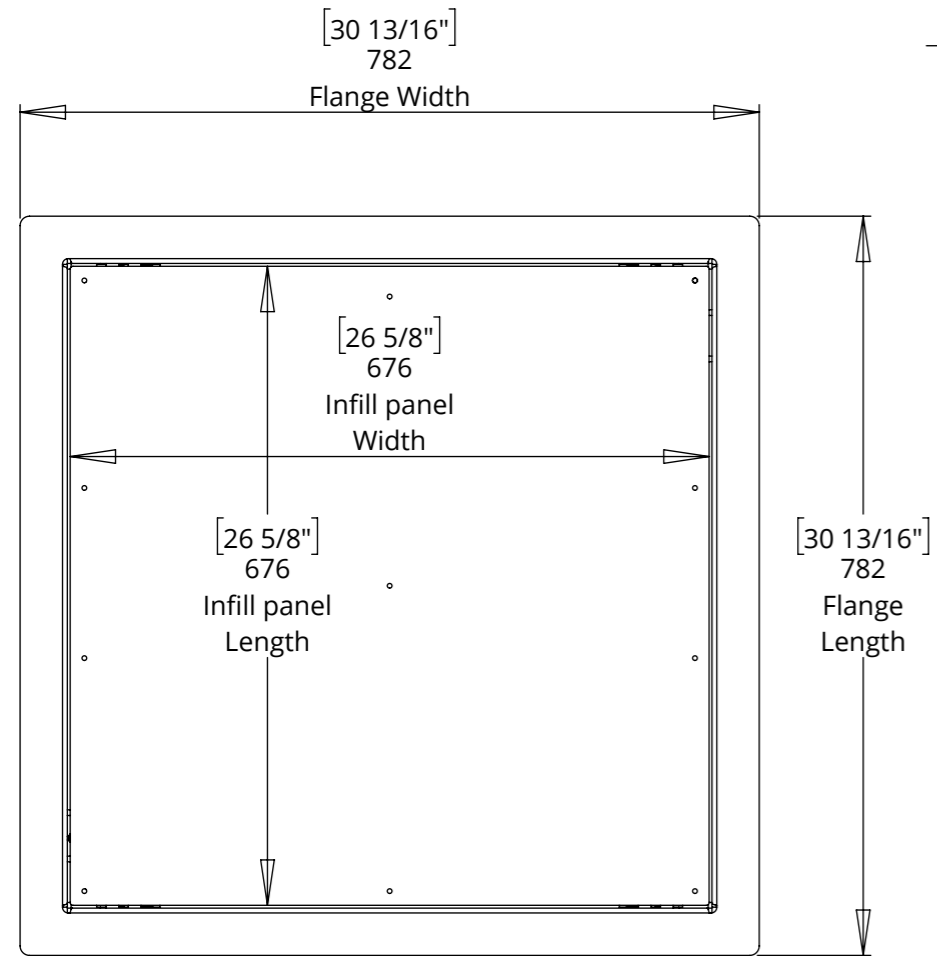
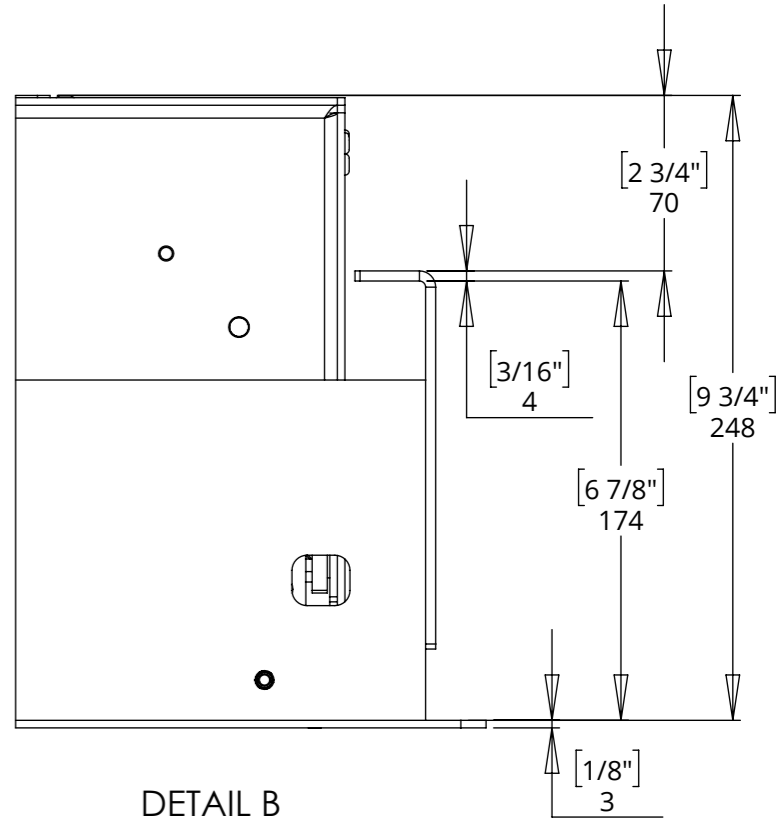
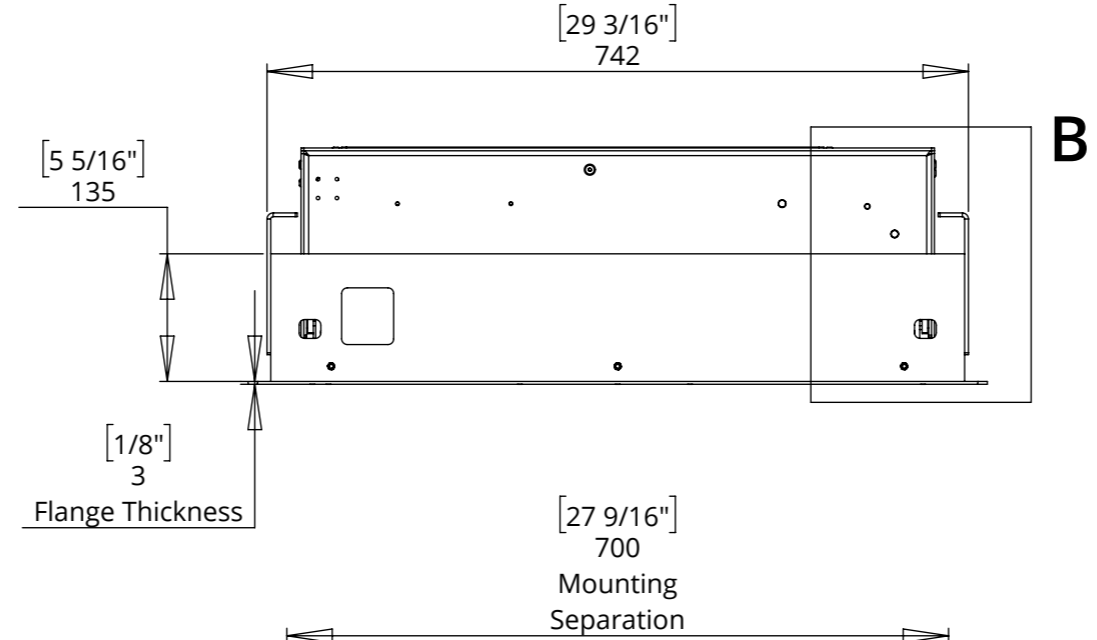
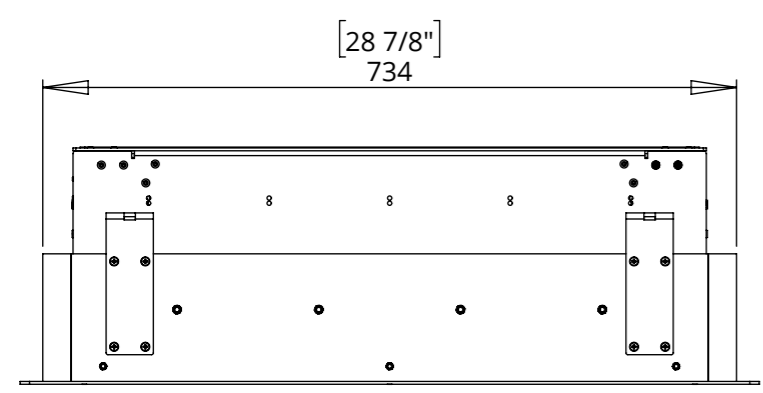
Recommended Maximum Projector Size accounts for only the Projectors External Dimensions.

Should you want to use the maximum available space, thought must be taken with regard to where AV connections are located on the projector.

# PDR2-COM

## PROJECTOR DROP RANGE COMMERCIAL

### GENERAL DIMENSIONS

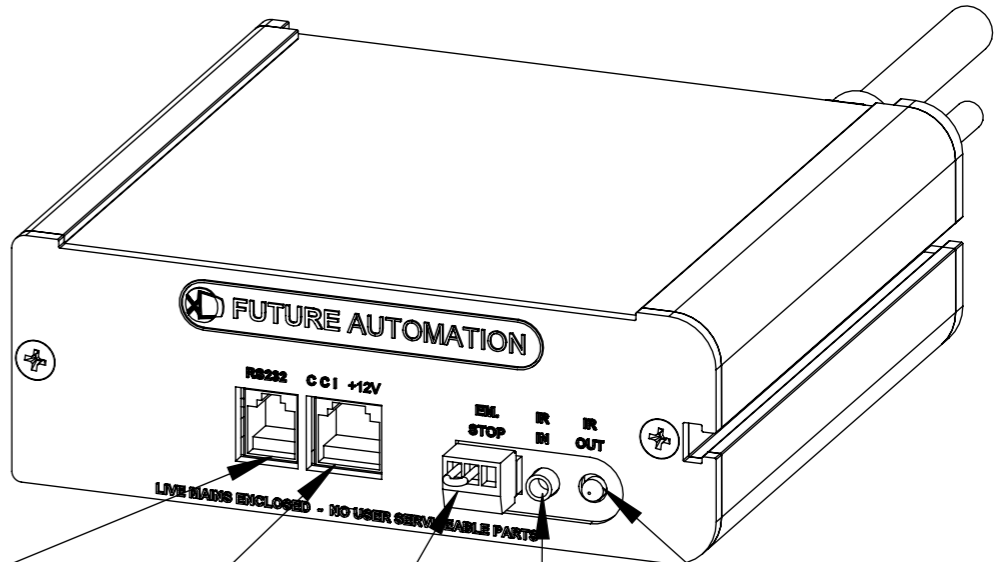
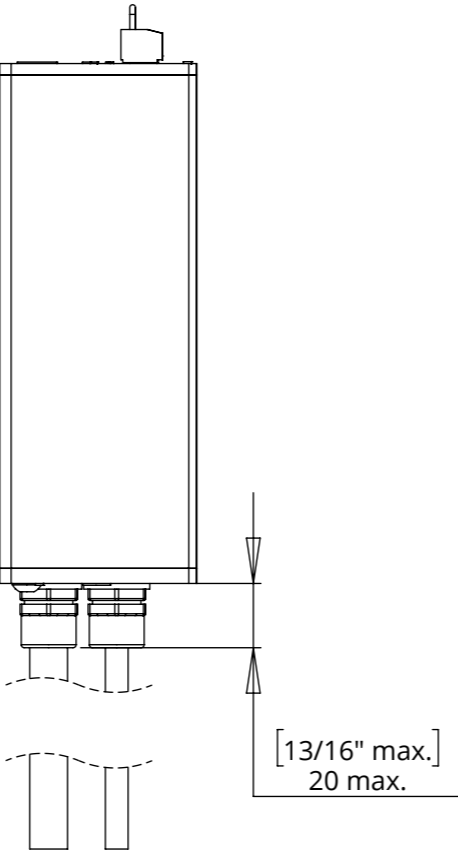
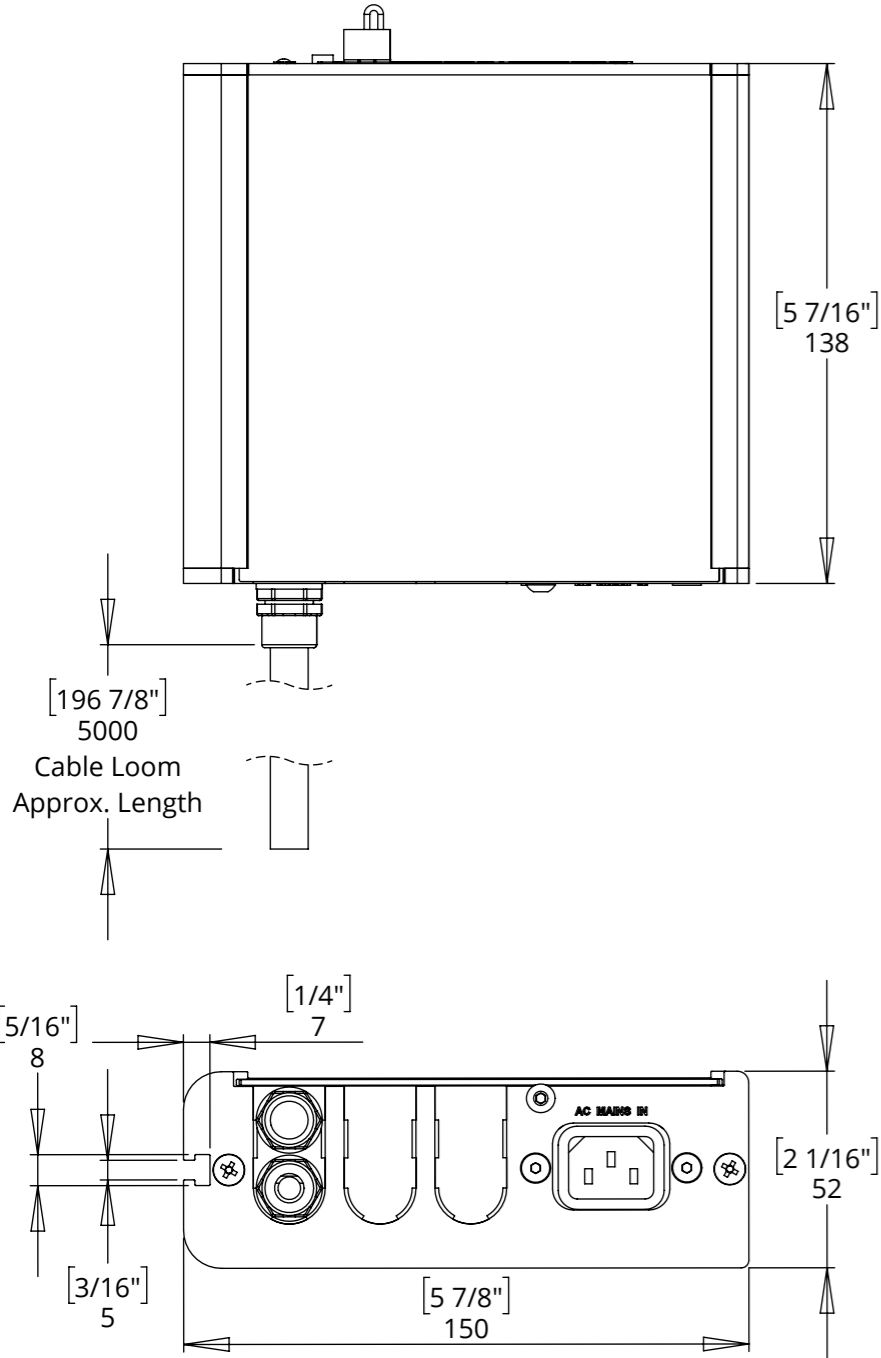




# PDR2-COM

## PROJECTOR DROP RANGE COMMERCIAL

### CONTROL BOX DETAILS



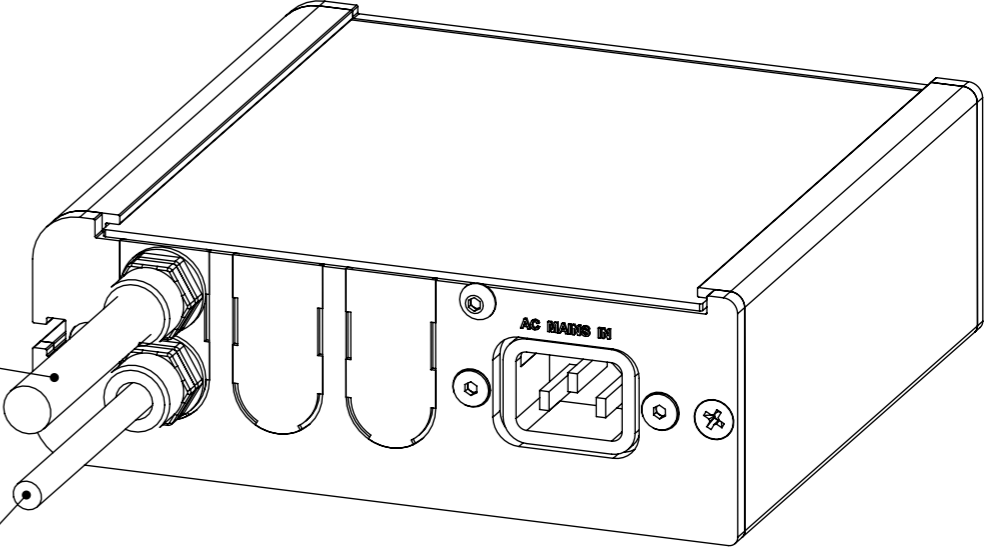
RS232 Port

Contact Closure Port

Emergency Stop Connector (Removal will stall mechanism)

IR Output Indicator LED

IR Lead Input 3.5mm [0.14"] JACK



3 CORE CABLE  
LIFT MOTOR  
10mm [0.4"] dia.  
EU SPEC: 0.75mm<sup>2</sup>  
US SPEC: 18AWG

2 CORE CABLE  
SWITCH  
6mm [0.25"] dia.  
EU SPEC: 0.5mm<sup>2</sup>  
US SPEC: 20AWG

- NOTES**
- POWER SUPPLY UNIT (PSU) WILL ALLOW 110V OR 240V AC INPUT. THE SAME PSU IS USED FOR EU OR US MAINS SUPPLIES.
  - OTHER THAN CONTROL CABLES, ALL CABLES TERMINATE AT CONTROL BOARD VIA STANDARD PHOENIX CONNECTORS.
  - CABLE LOOM LENGTH SUPPLIED AT APPROX. 5m [196 7/8"]. LOOM CAN BE EXTENDED UP TO MAXIMUM OF APPROX. 10m [400"].
  - MINIMUM CABLE BEND RADIUS 25mm [1"].