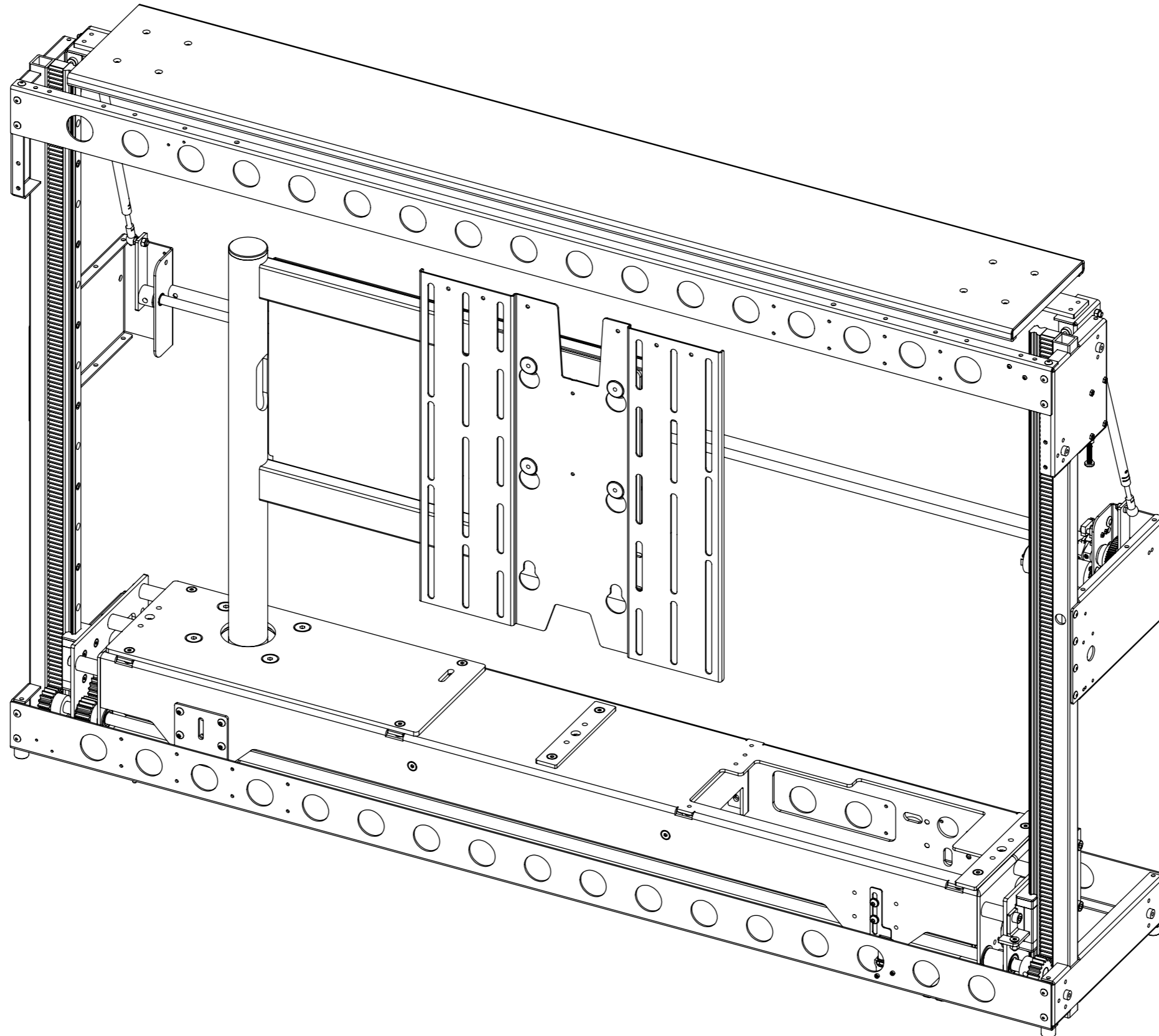


PLH

PLASMA LIFT HINGE



PLH

PLASMA LIFT HINGE



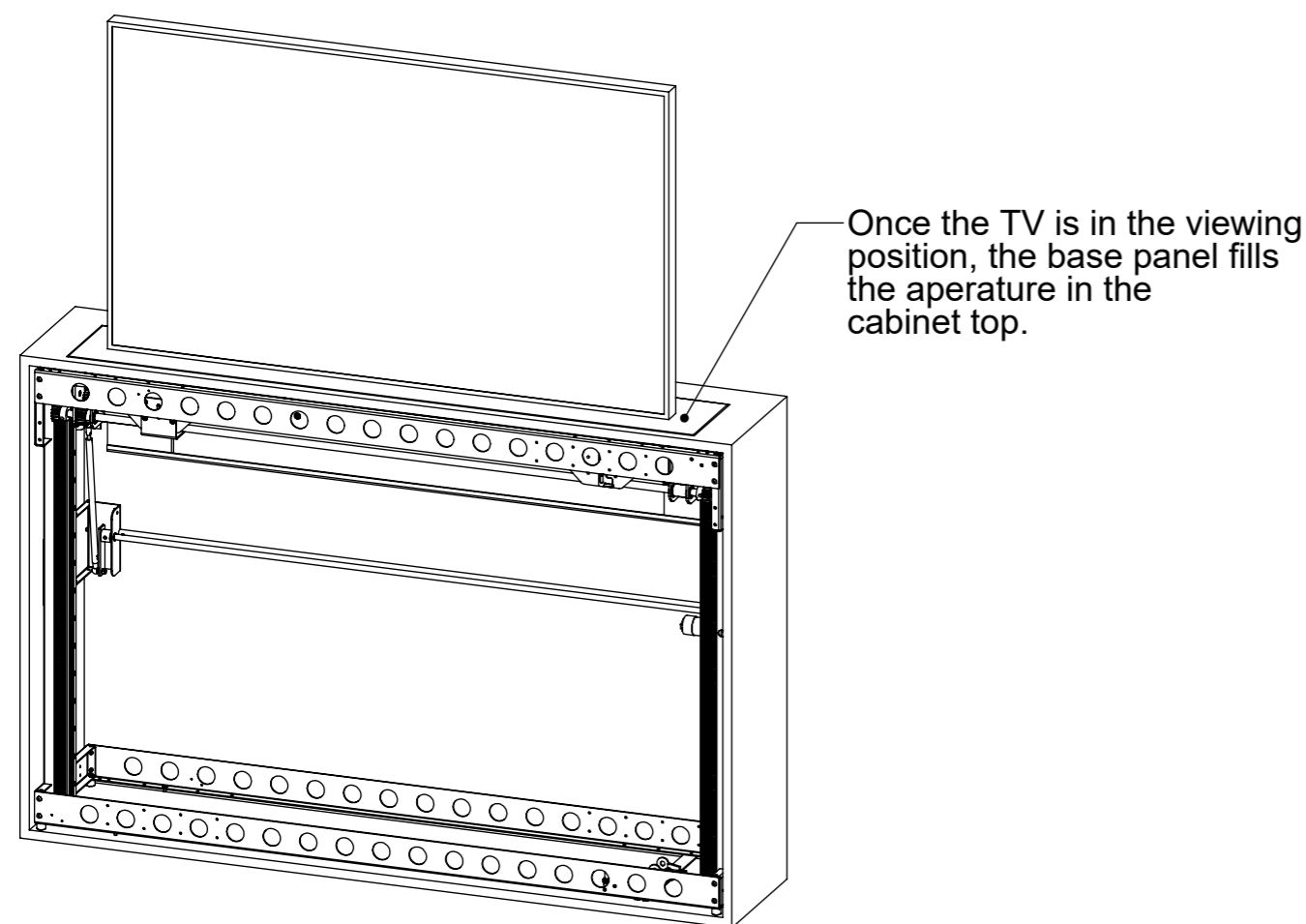
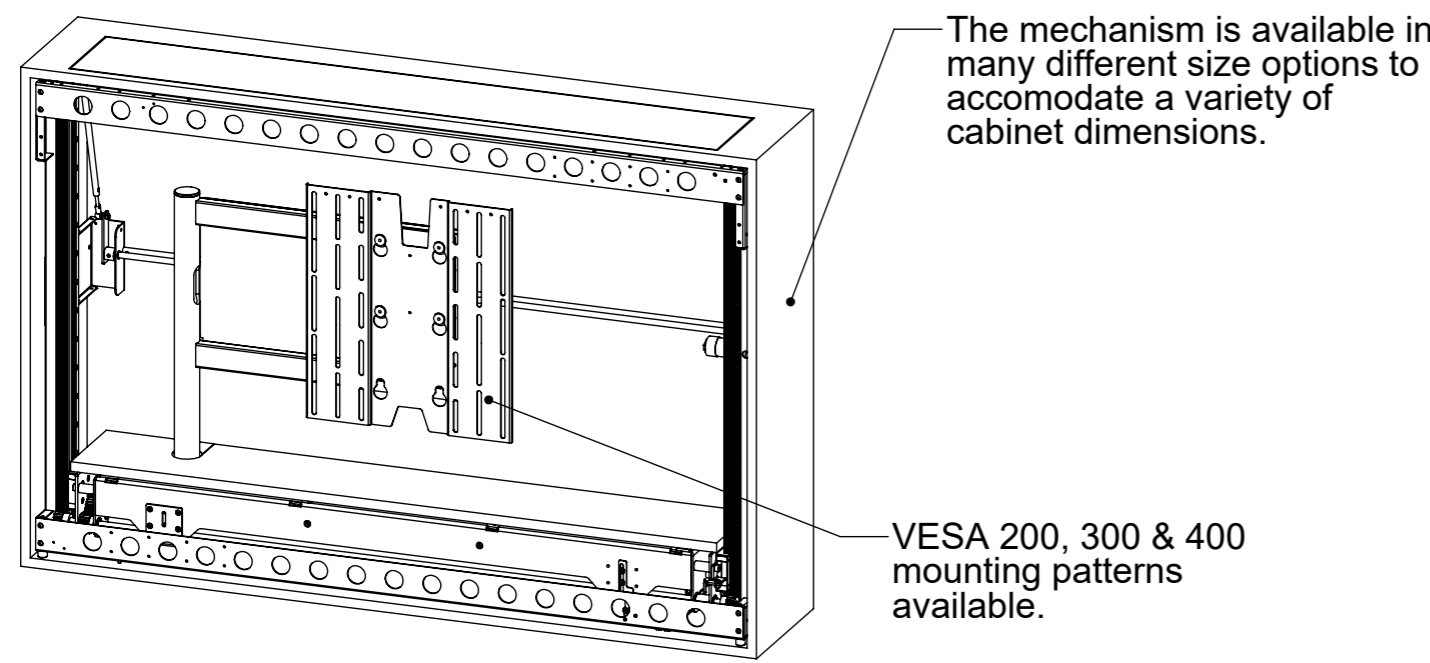
future automation

SPECIFICATION	MEASUREMENTS
Maximum Screen Depth	70mm (2 3/4")
Maximum Weight Capacity	25Kg (55lb)
Maximum Rotation	90 ° - left and right hinge options available (see table on sheet 5 for further details)
Movement Type	Motorised
Power Supply Required	240V or 110V
Power Consumption Max.	500W
Power Consumption Standby	3W
Mounting Patterns Supported	VESA 400, 300, 200 W x 400, 300, 200 H
Control Options	IR Remote, RS232, Contact Closure
Product Options / Features	Specific B&O and Loewe mounts / adapters, Custom RAL paint finishes, Marine suitable version available
Package Contents	Mechanism, IR remote control
Marine Suitable	No

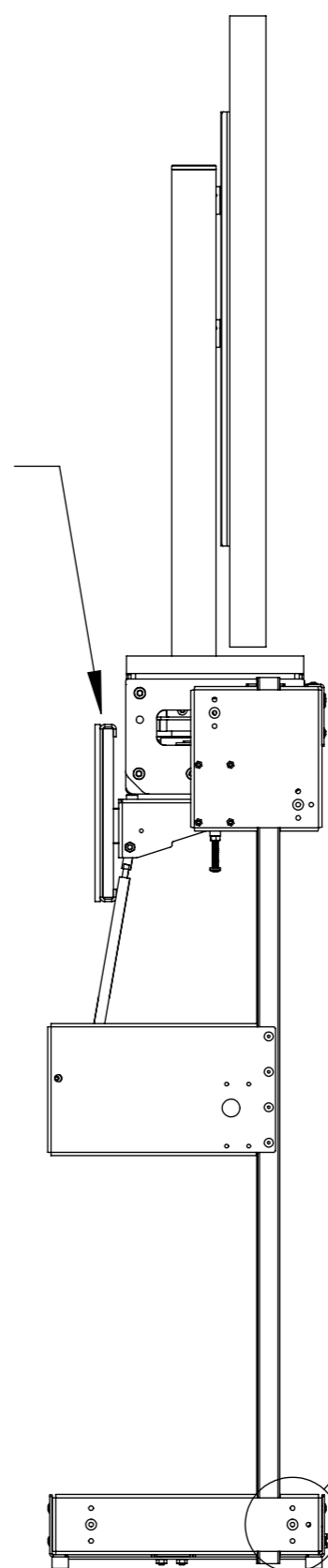
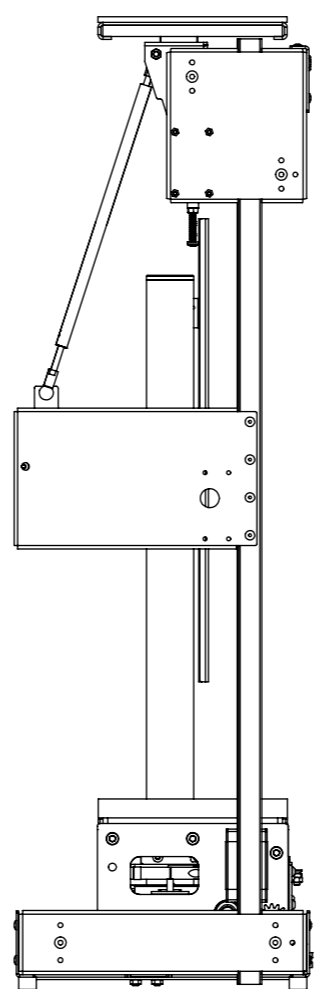
PLH

PLASMA LIFT HINGE

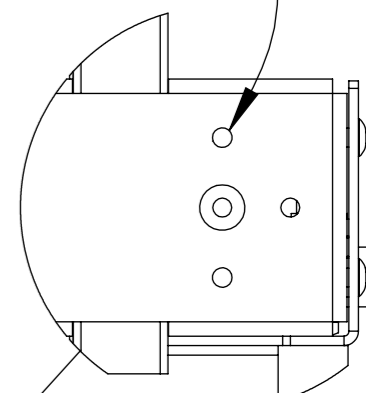
GENERAL INFORMATION



The electric flap lowers and rolls back into the cabinet before the TV is raised through the aperture.



Mounting holes to secure the mechanism to the cabinet.



PLH

PLASMA LIFT HINGE



future automation

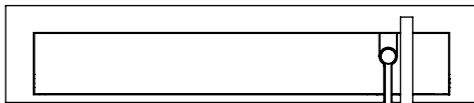
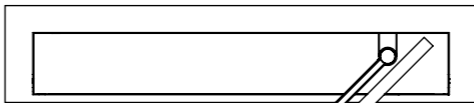
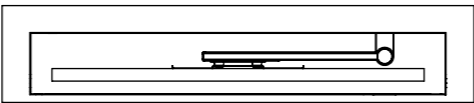
HINGE MECHANISM

The PLH mechanism allows a screen to be rotated up to 90 about its end.

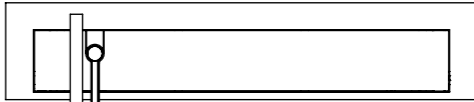
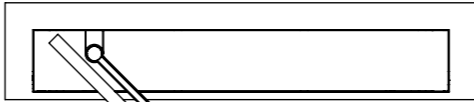
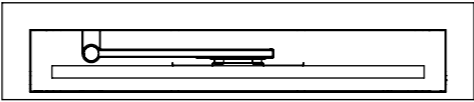
Left Handed and Right Handed versions are available.

Up to four user defined angular positions can be stored in the mechanism memory via the IR remote control.

PLH-RH



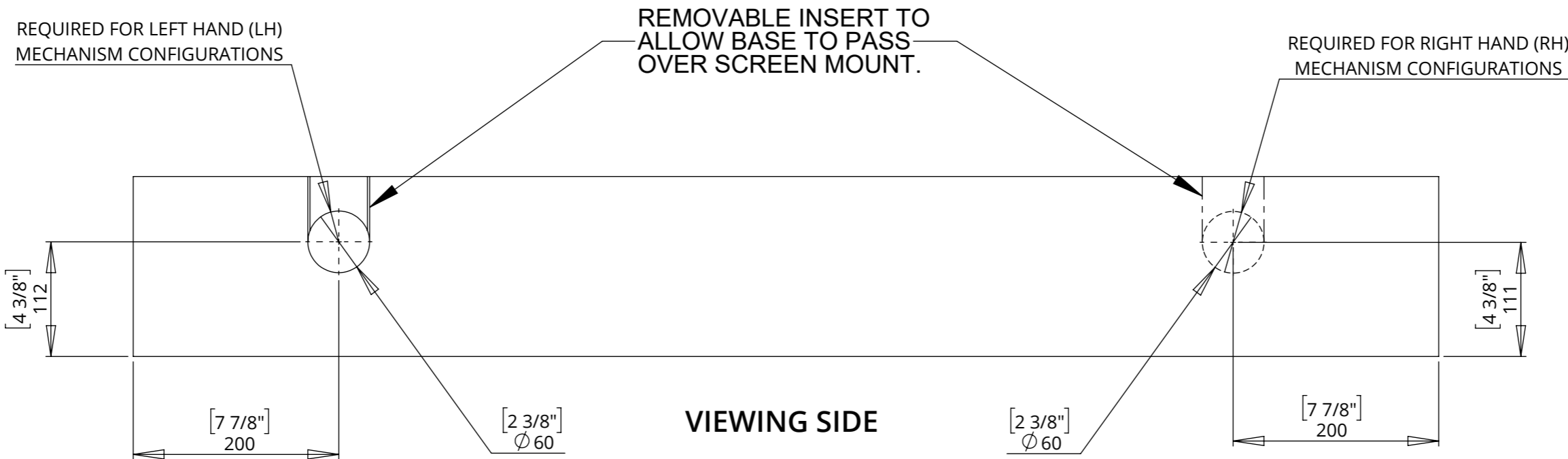
PLH-LH



BASE PANEL DETAILS

The base panel requires a circular cut out for the hinging mount to fix through.

A removable insert is required to allow the base panel to pass over the screen mount pole.



PLH

PLASMA LIFT HINGE

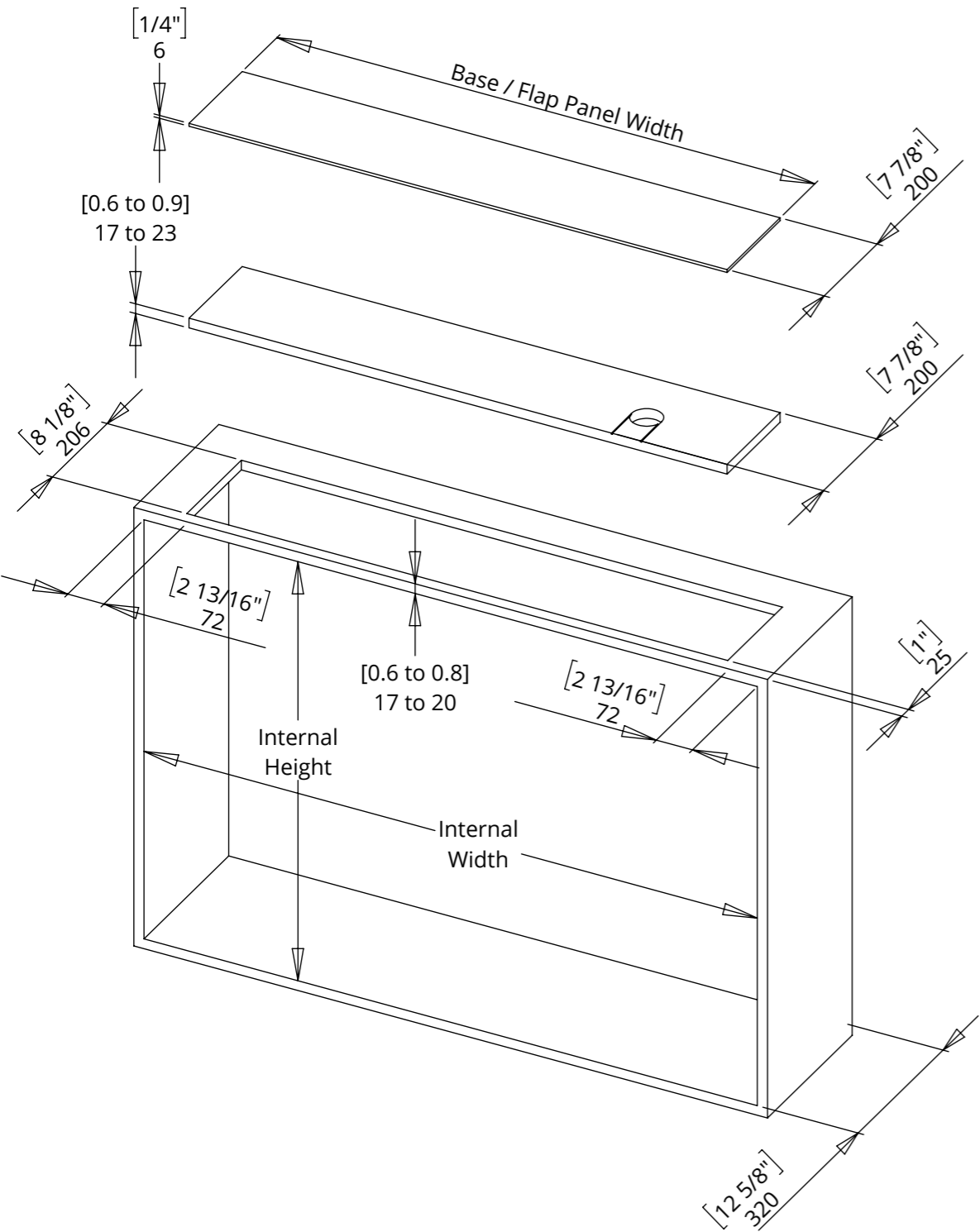


future automation

CABINET DIMENSIONS

Maximum screen thickness - 70mm [2 3/4"]
Maximum screen weight - 25kg [55lb]

Maximum flap panel weight - 4kg [9lb]
Maximum base panel weight - 6kg [13lb]



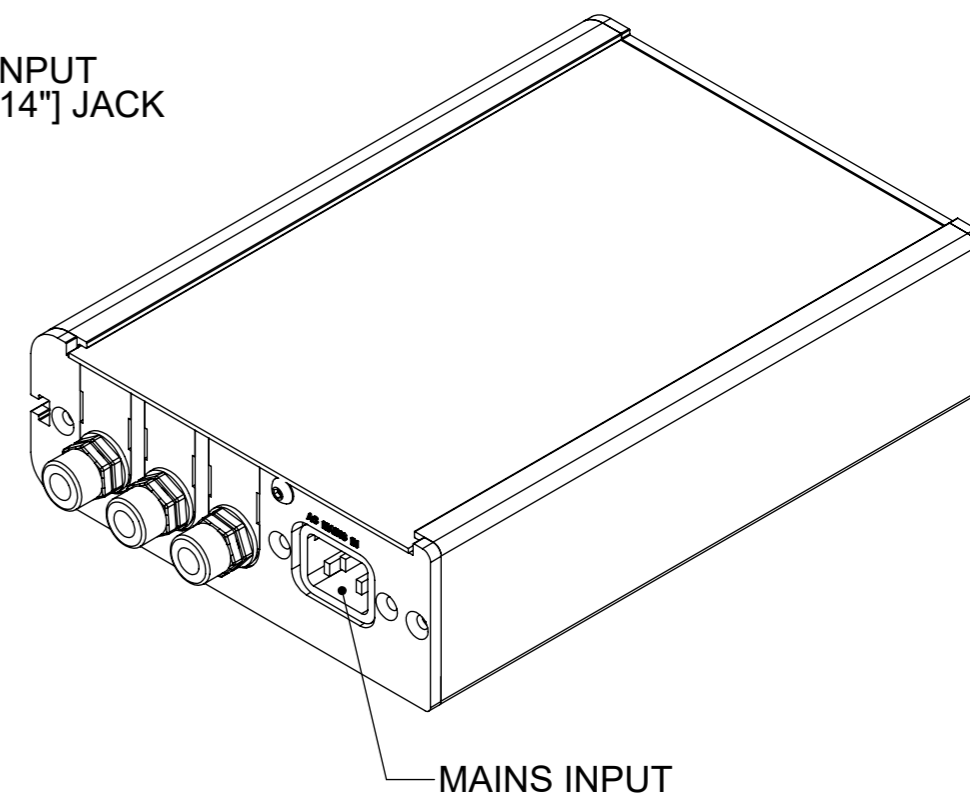
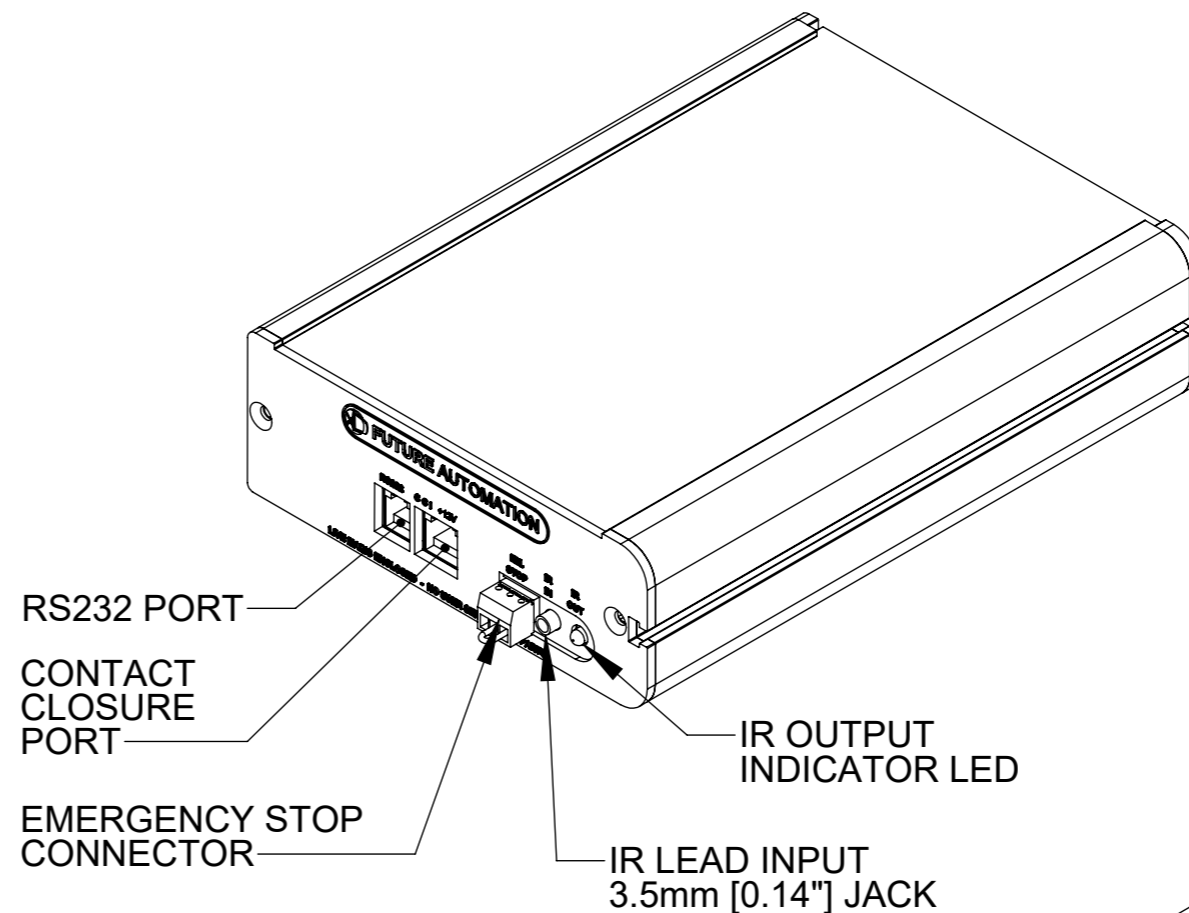
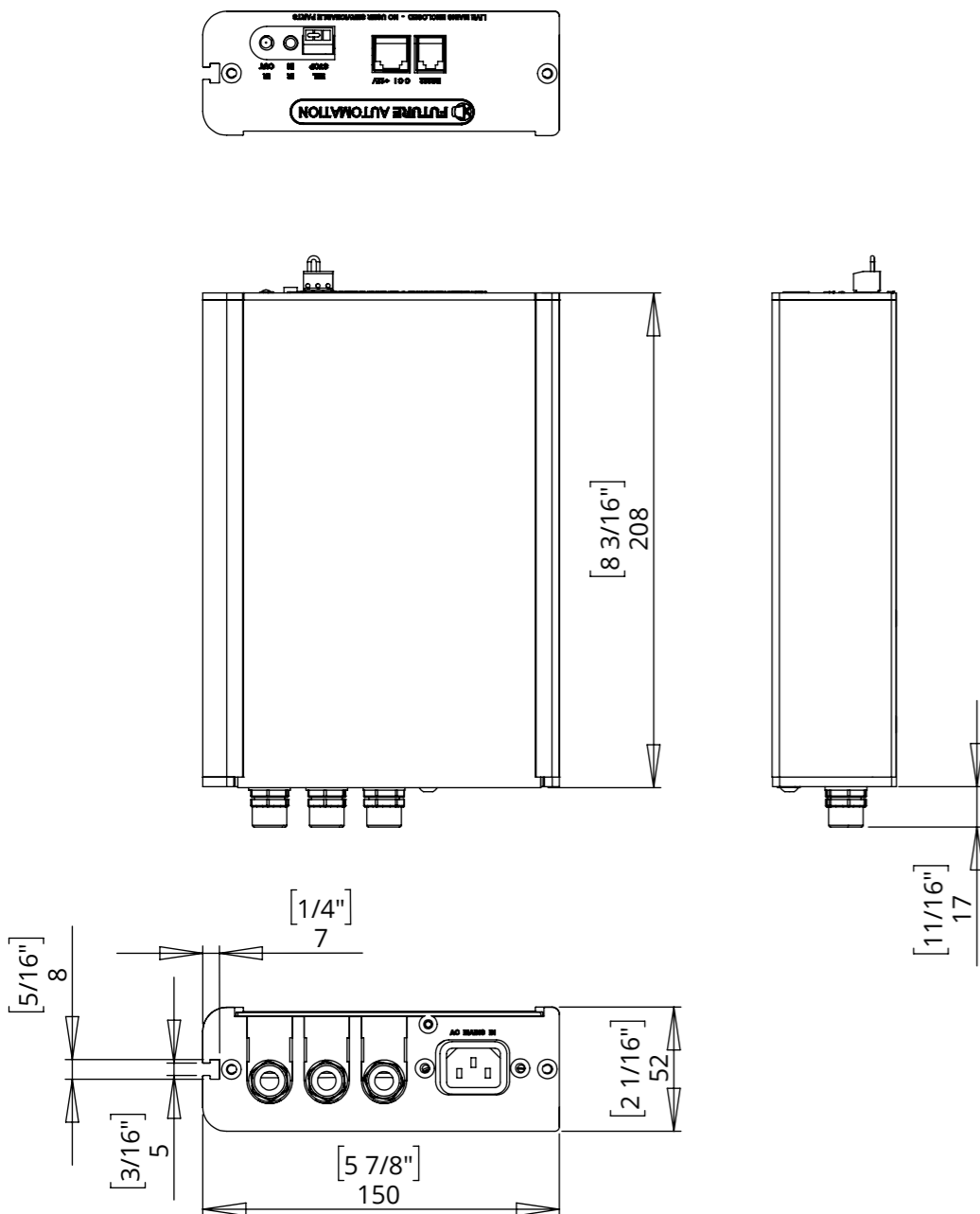
MAXIMUM SCREEN HEIGHT mm [inches]	INTERNAL HEIGHT mm [inches]
485 [19 1/8]	H 760 [29 15/16]
535 [21 1/16]	H 810 [31 7/8]
585 [23 1/16]	H 860 [33 7/8]
635 [25]	H 910 [35 13/16]
685 [26 15/16]	H 960 [37 13/16]
735 [28 15/16]	H 1010 [38 3/4]
785 [30 7/8]	H 1060 [41 3/4]
835 [32 7/8]	H 1110 [43 11/16]
885 [34 13/16]	H 1160 [45 11/16]
935 [36 13/16]	H 1210 [47 5/8]
985 [38 3/4]	H 1260 [49 5/8]

MAXIMUM SCREEN WIDTH - ROTATION <70° mm [inches]	MAXIMUM SCREEN WIDTH - ROTATION <90° mm [inches]	BASE / FLAP PANEL WIDTH mm [inches]	INTERNAL WIDTH mm [inches]
750 [29 1/2]	700 [27 9/16]	770 [30 5/16]	W 920 [36 1/4]
850 [33 7/16]	800 [31 1/2]	870 [34 1/4]	W 1020 [40 3/16]
950 [37 3/8]	900 [35 7/16]	970 [38 3/16]	W 1120 [44 1/8]
1050 [41 5/16]	1000 [39 3/8]	1070 [42 1/8]	W 1220 [48 1/16]
1150 [45 1/4]	1100 [43 5/16]	1170 [46 1/16]	W 1320 [51 15/16]
1250 [49 3/16]	1200 [47 1/4]	1270 [50]	W 1420 [55 7/8]
1350 [53 1/8]	1300 [51 3/16]	1370 [53 15/16]	W 1520 [59 13/16]
1450 [57 1/16]	1400 [55 1/8]	1470 [57 7/8]	W 1620 [63 3/4]
1550 [61"]	1500 [59 1/16"]	1570 [61 13/16"]	W 1720 [67 11/16"]

PLH

PLASMA LIFT HINGE

CONTROL BOX DETAILS



NOTES

- POWER SUPPLY UNIT (PSU) WILL ALLOW 110V OR 240V AC INPUT. THE SAME PSU IS USED FOR EU OR US MAINS SUPPLIES.
- OTHER THAN CONTROL CABLES, ALL CABLES TERMINATE AT CONTROL BOARD VIA STANDARD PHOENIX CONNECTORS.
- CABLE LOOM LENGTH SUPPLIED AT APPROX. 3m [118"]. LOOM CAN BE EXTENDED UP TO MAXIMUM OF APPROX. 10m [400"].
- MINIMUM CABLE BEND RADIUS 25mm [1"].