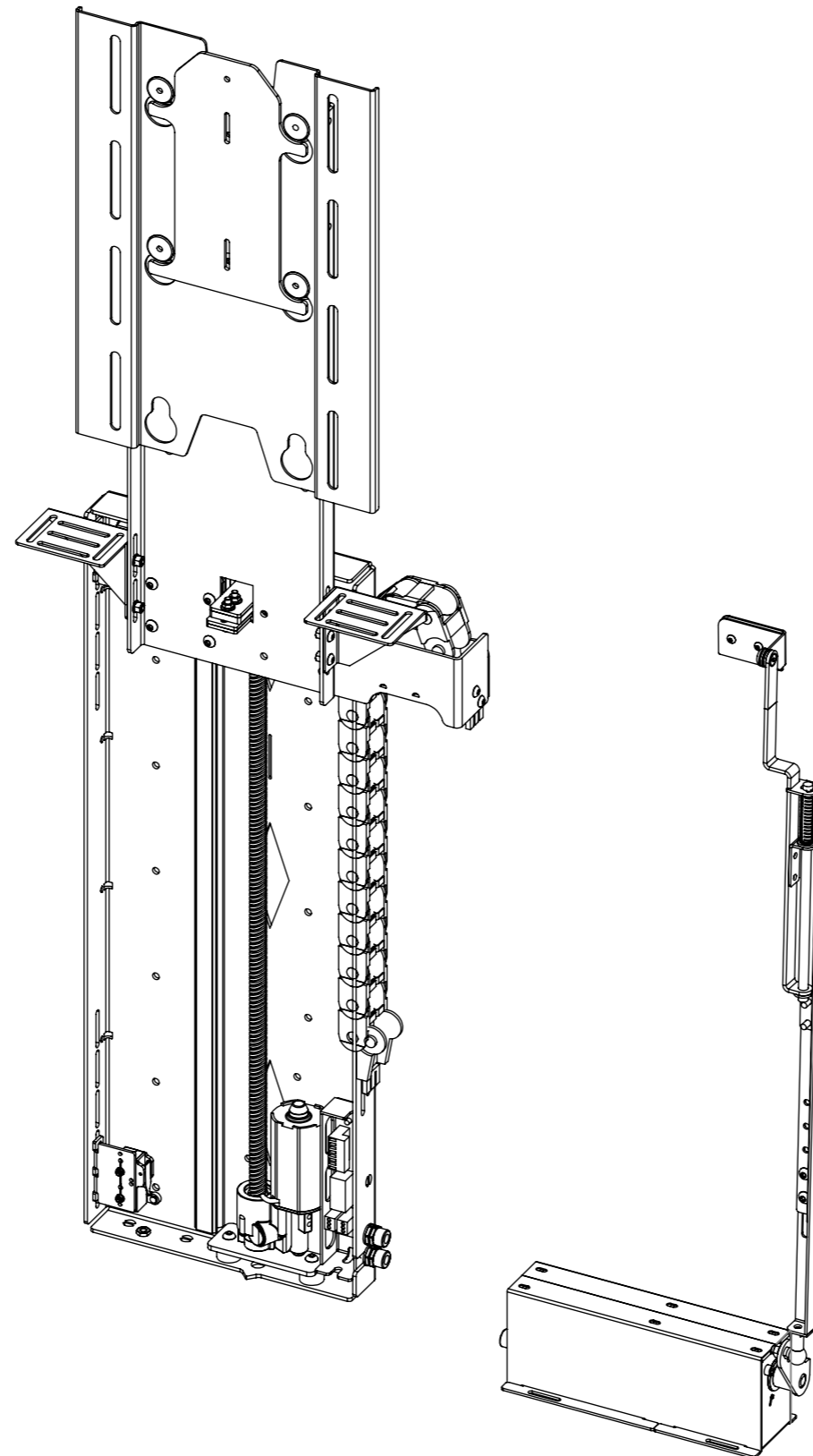


LSL-EFA 2

LIFT SYSTEM LIGHT WITH ELECTRIC FLAP



future automation



LSL-EFA 2

LIFT SYSTEM LIGHT WITH ELECTRIC FLAP



future automation

SPECIFICATION	MEASUREMENTS
Screen Sizes (Approx)	32" - 40"
Maximum Weight Capacity	25Kg (55lb)
Maximum Weight Capacity (Marine)	16Kg (35lb)
Maximum Screen Height	524mm (20 5/8")
Packaging Dimensions	920mm (36 1/4") x 550mm (21 5/8") x 250mm (9 13/16")
Shipping Weight	18Kg (40lb)
Movement Type	Motorised
Power Supply Required	110V or 240V AC
Power Consumption	250-500W
Power Consumption Standby	3W
Decibel Rating	58dB
Mounting Patterns Supported	VESA 200 W x 300, 200 H
Control Options	IR Remote, RS232, Contact Closure
Product Options / Features	Specific B&O and Loewe mounts / adapters, Custom RAL paint finishes, Outdoor version
Package Contents	Mechanism, IR remote control
Marine Suitable	Yes (Indoor)

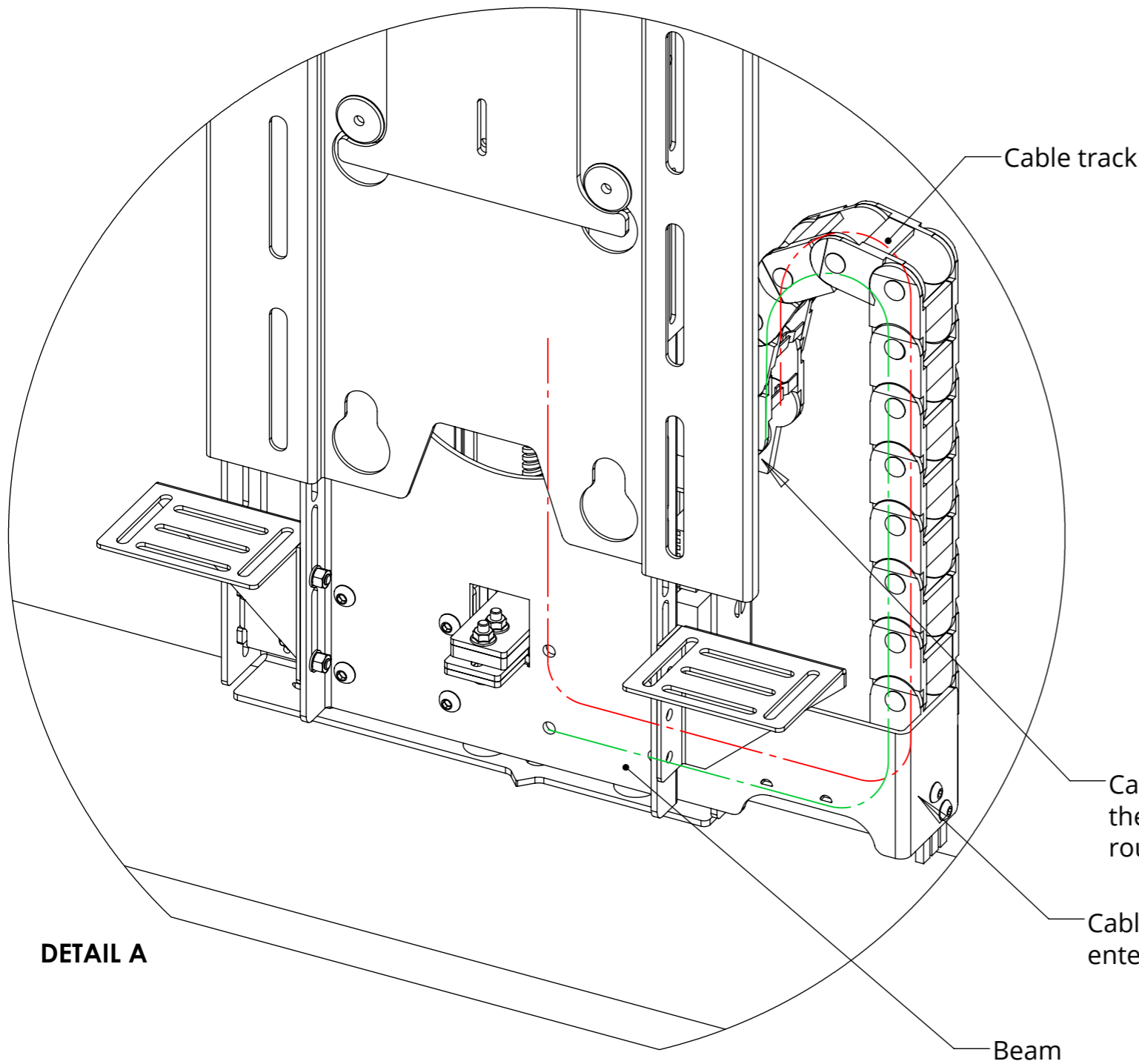
LSL-EFA 2

LIFT SYSTEM LIGHT WITH ELECTRIC FLAP

CABLE ROUTING

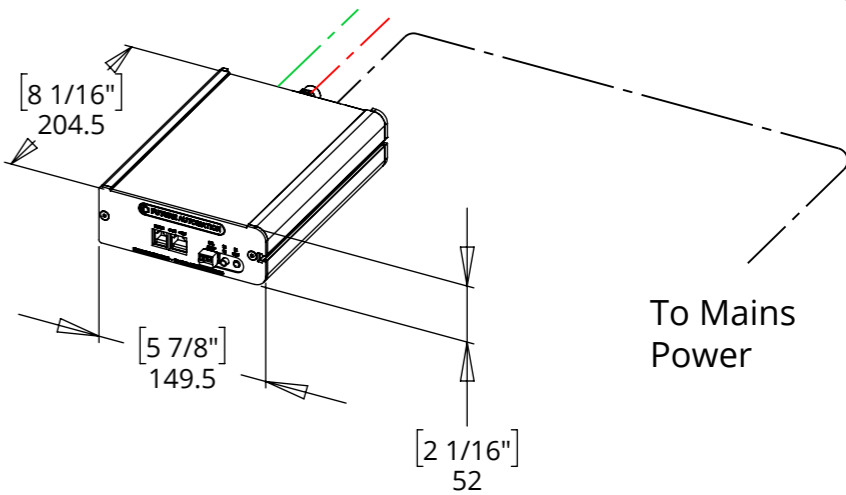
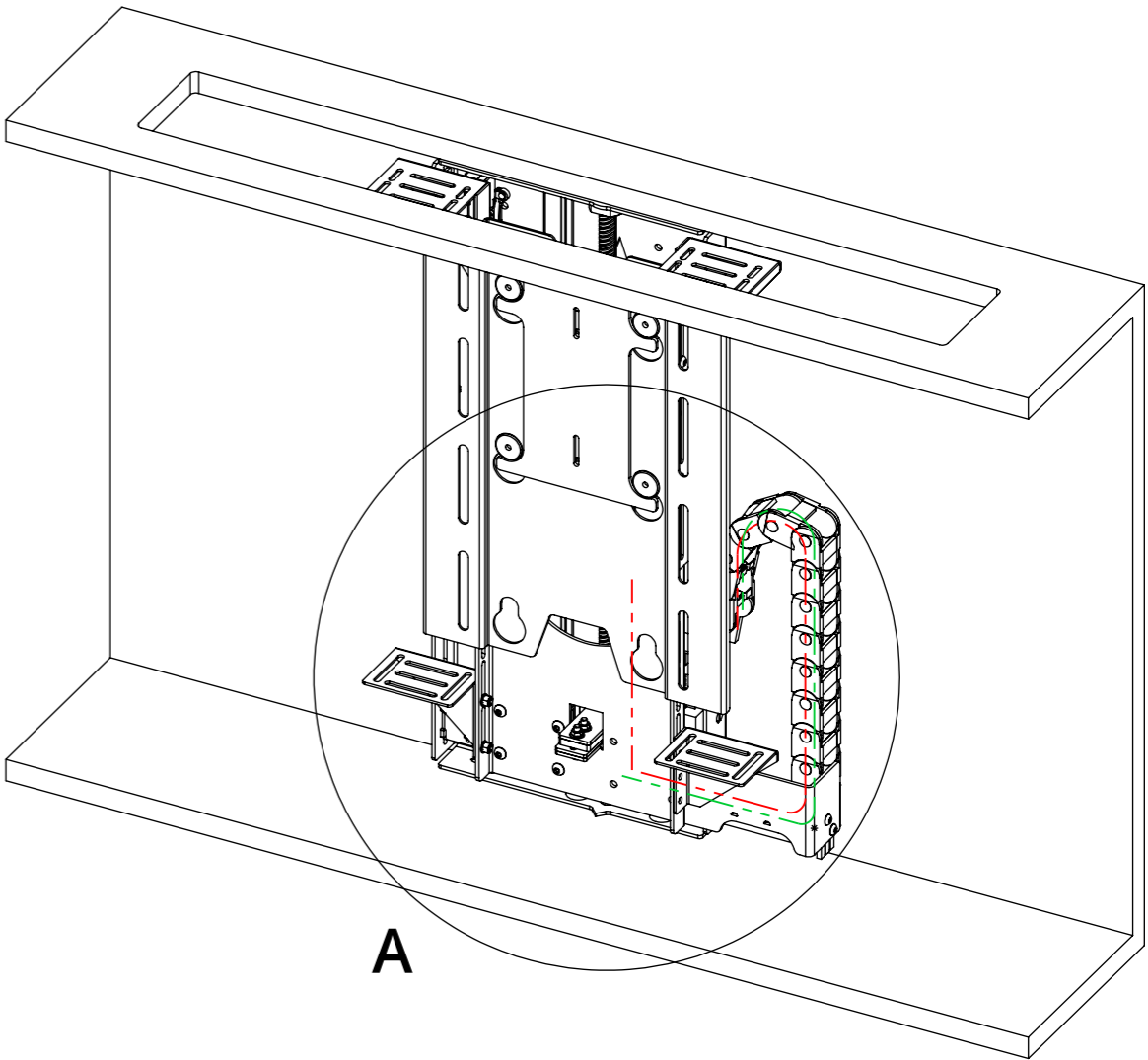
Screen cables are routed behind the Base Panel and out the right side of the Beam into the Cable Track. Cables must be routed carefully to prevent any interference with the LSL beam as it operates.

Screen and Mechanism cables should be routed to a control box in the bottom of the cabinet.



Cables can be secured to the back of the cabinet and routed to the control box

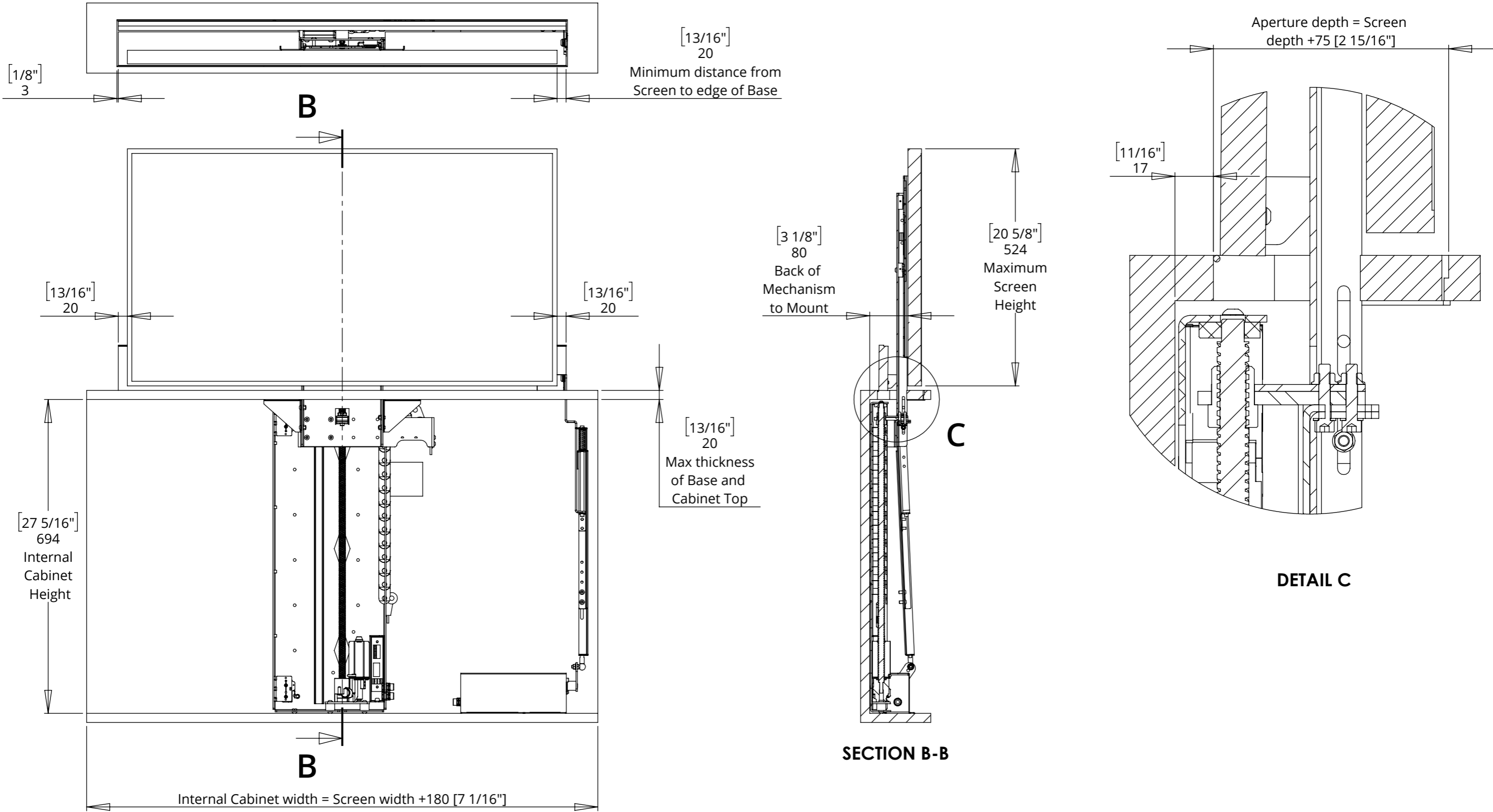
Cables exit Beam and enter Cable Track



LSL-EFA 2

LIFT SYSTEM LIGHT WITH ELECTRIC FLAP

MECHANISM UP - IN CABINET



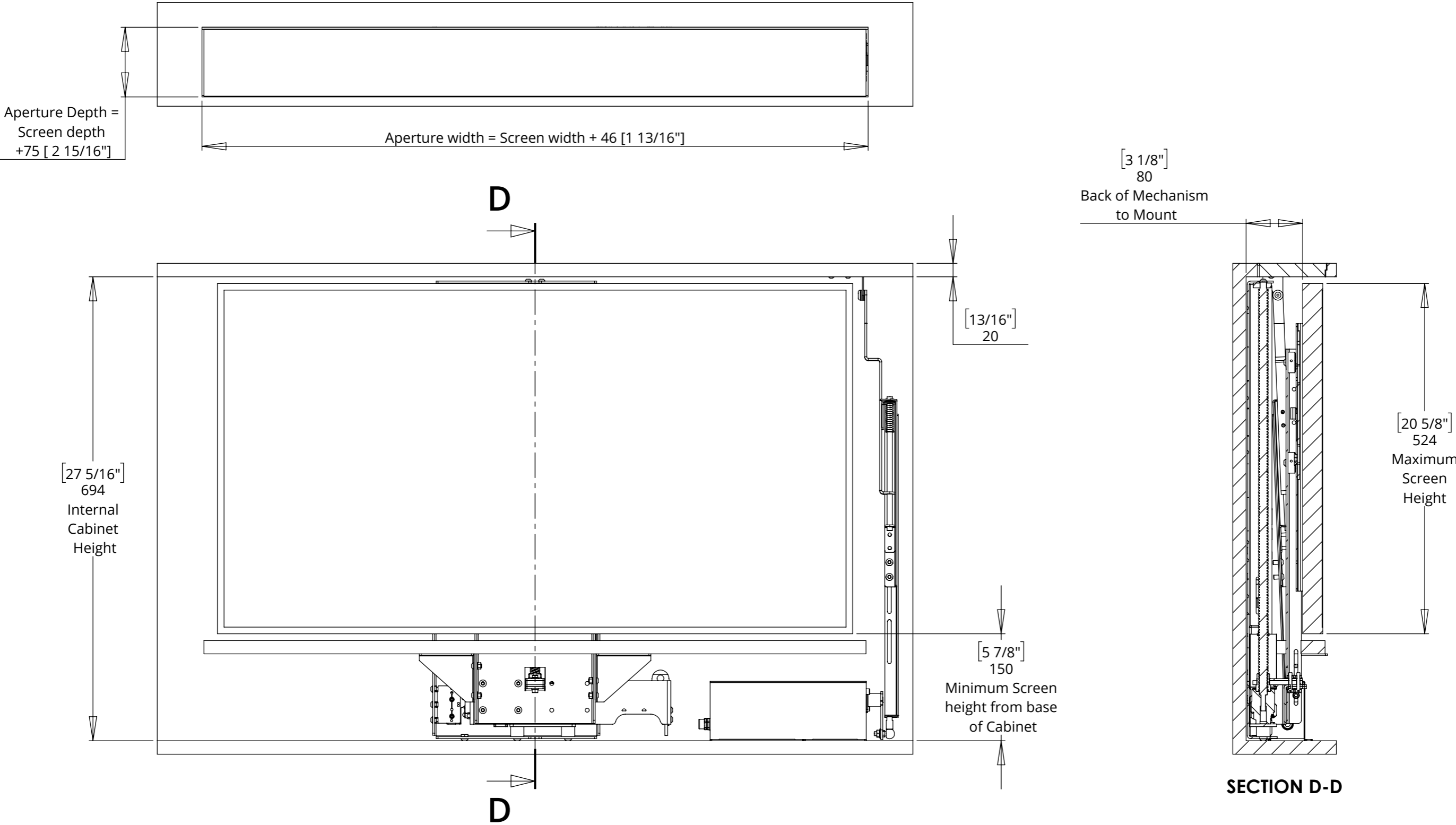
LSL-EFA 2

LIFT SYSTEM LIGHT WITH ELECTRIC FLAP



future automation

MECHANISM DOWN - IN CABINET



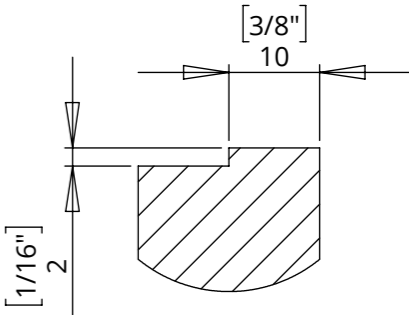
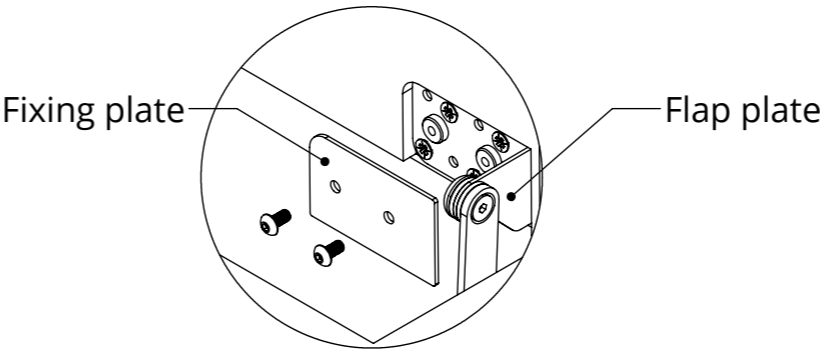
LSL-EFA 2

LIFT SYSTEM LIGHT WITH ELECTRIC FLAP



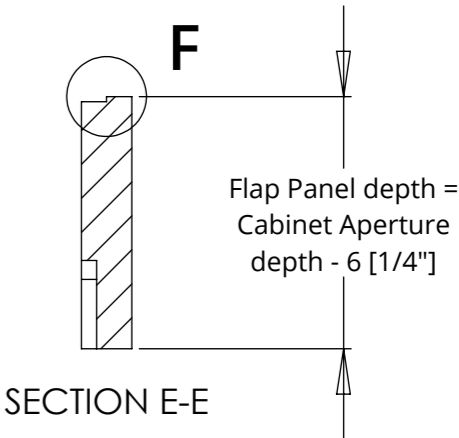
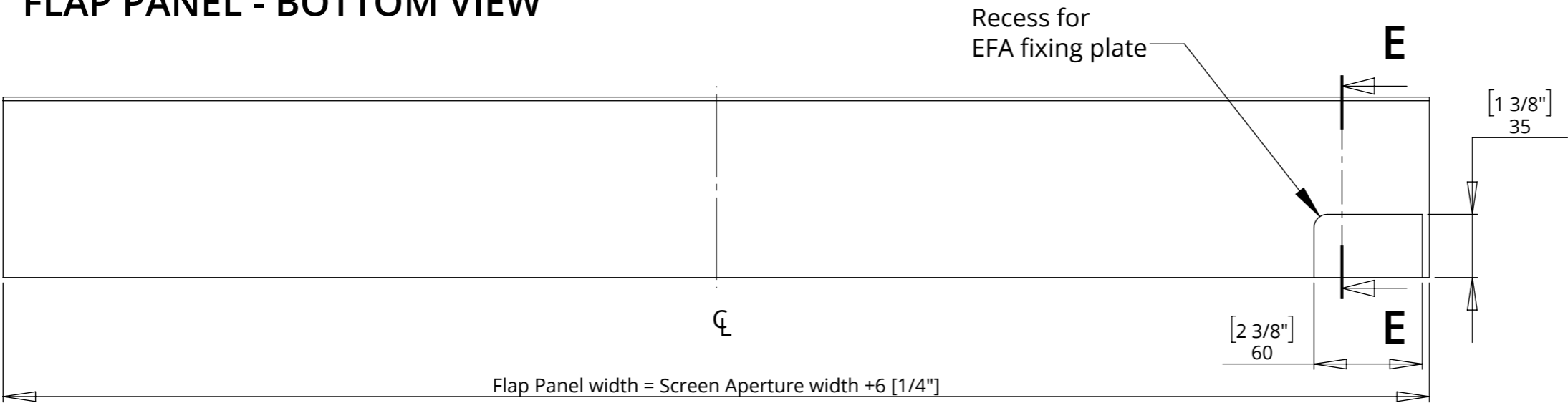
future automation

BASE PANEL AND FLAP PANEL DETAILS

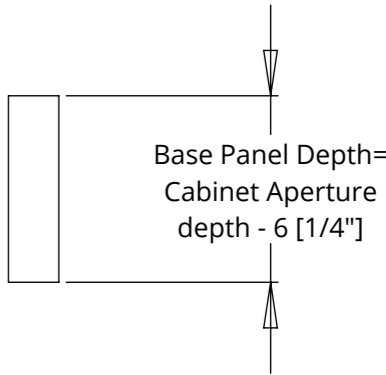
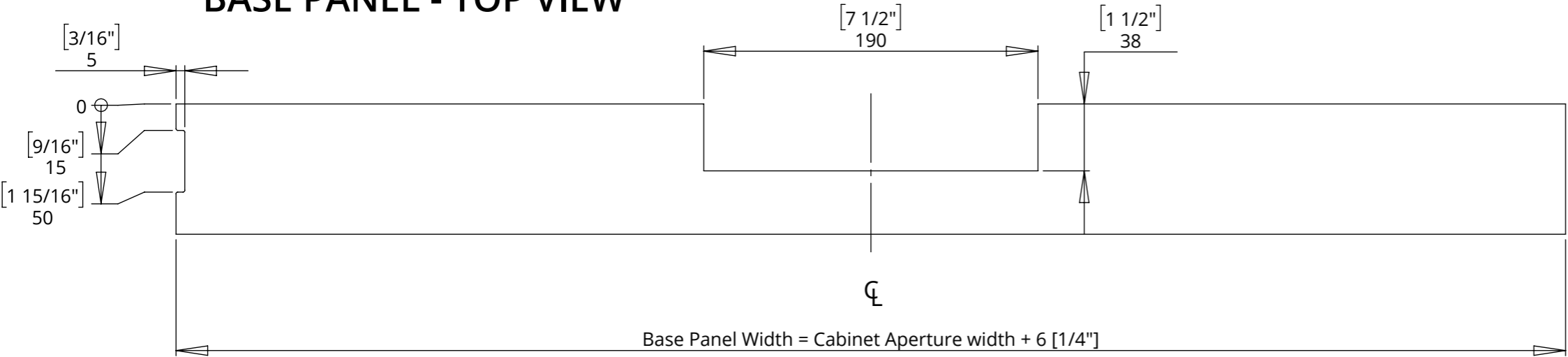


DETAIL F

FLAP PANEL - BOTTOM VIEW



BASE PANEL - TOP VIEW



LSL-EFA 2

LIFT SYSTEM LIGHT WITH ELECTRIC FLAP

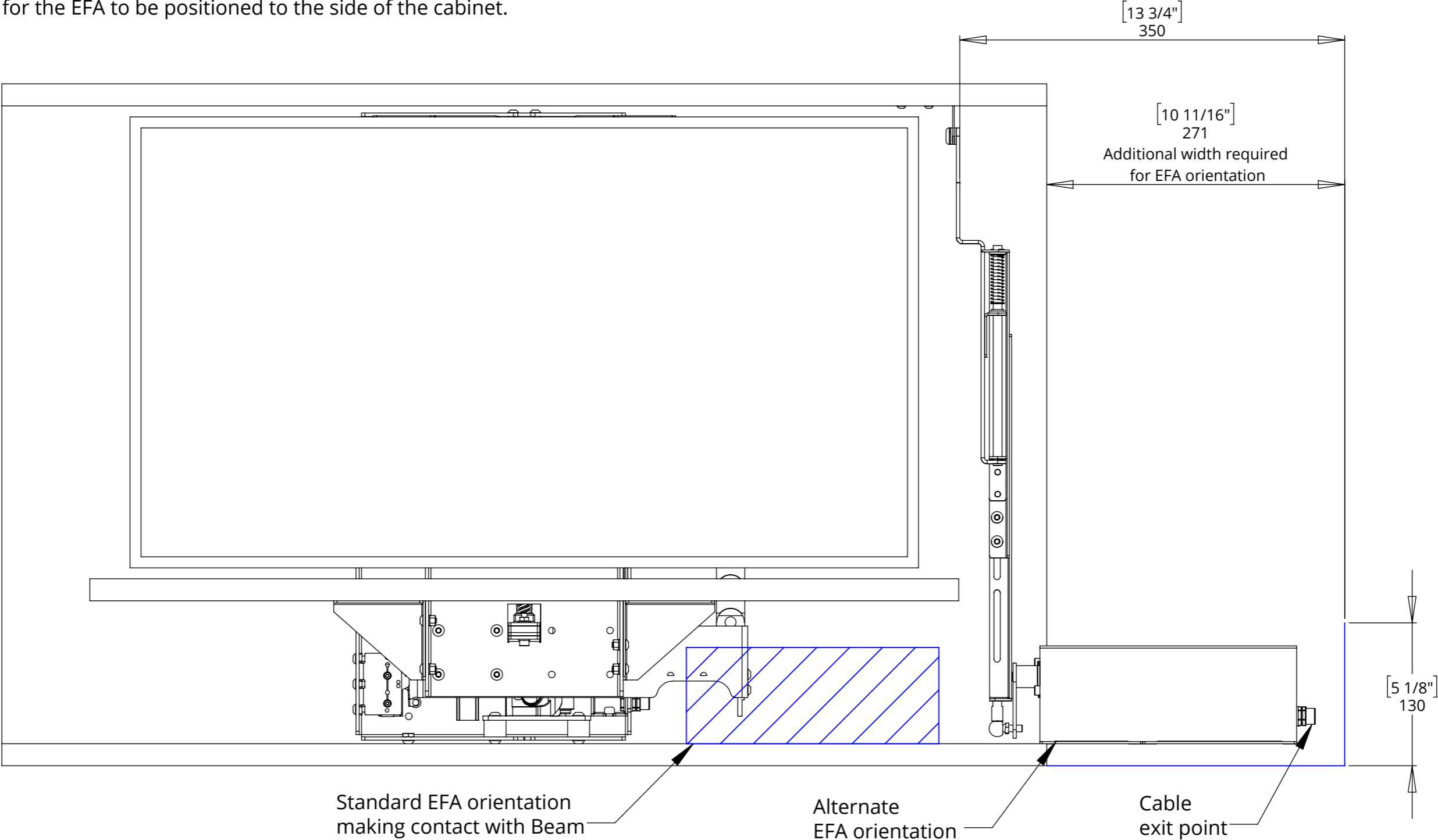


future automation

BASE PANEL AND FLAP PANEL DETAILS

A Base Panel of less than 1050mm [41 5/16"] wide will cause the EFA to interfere with the LSL beam.

This can be avoided by orientating the EFA away from the LSL. It will however require more space for the EFA to be positioned to the side of the cabinet.



LSL-EFA 2

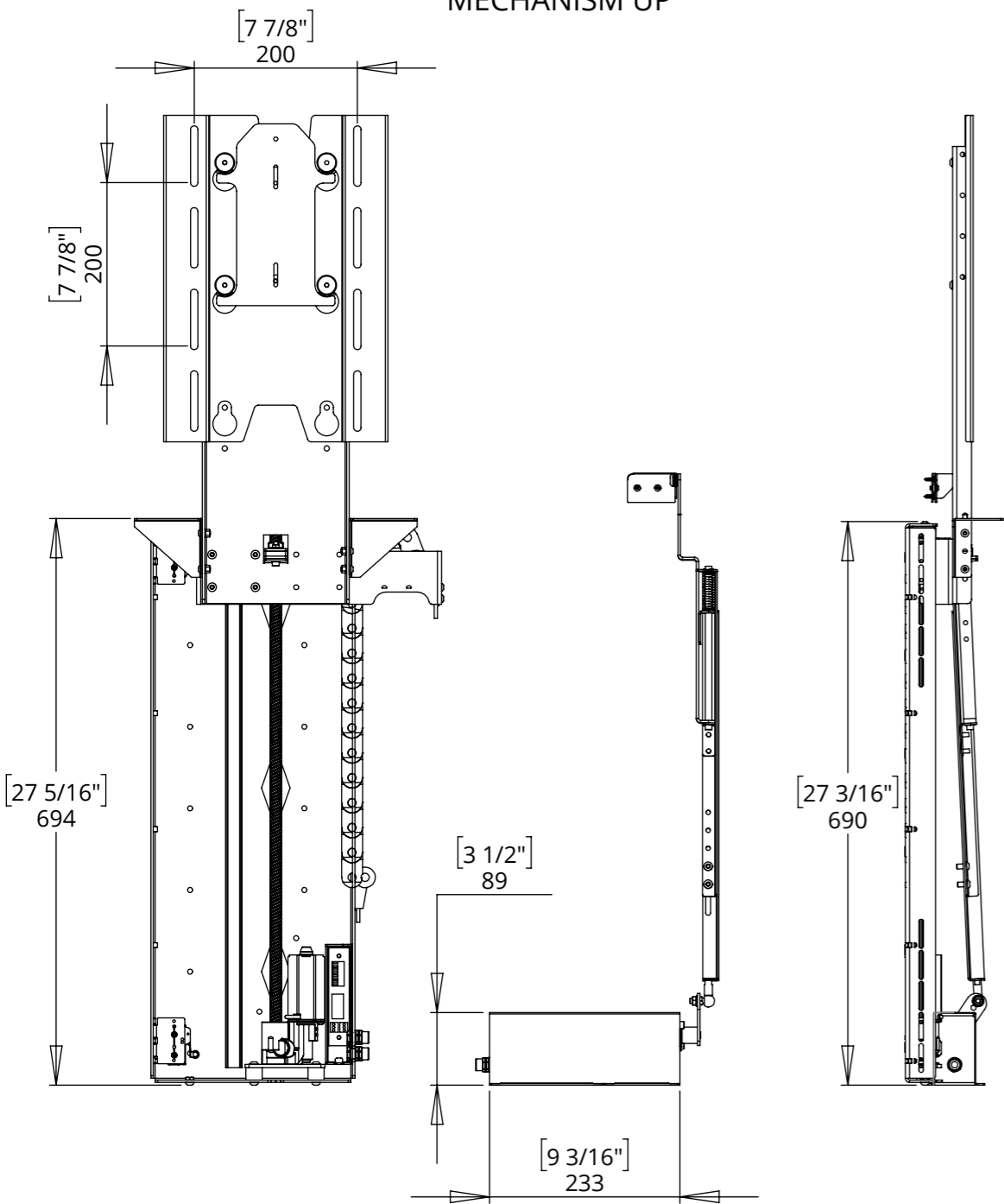
LIFT SYSTEM LIGHT WITH ELECTRIC FLAP



future automation

OVERALL MECHANISM DIMENSIONS

MECHANISM UP



MECHANISM DOWN

