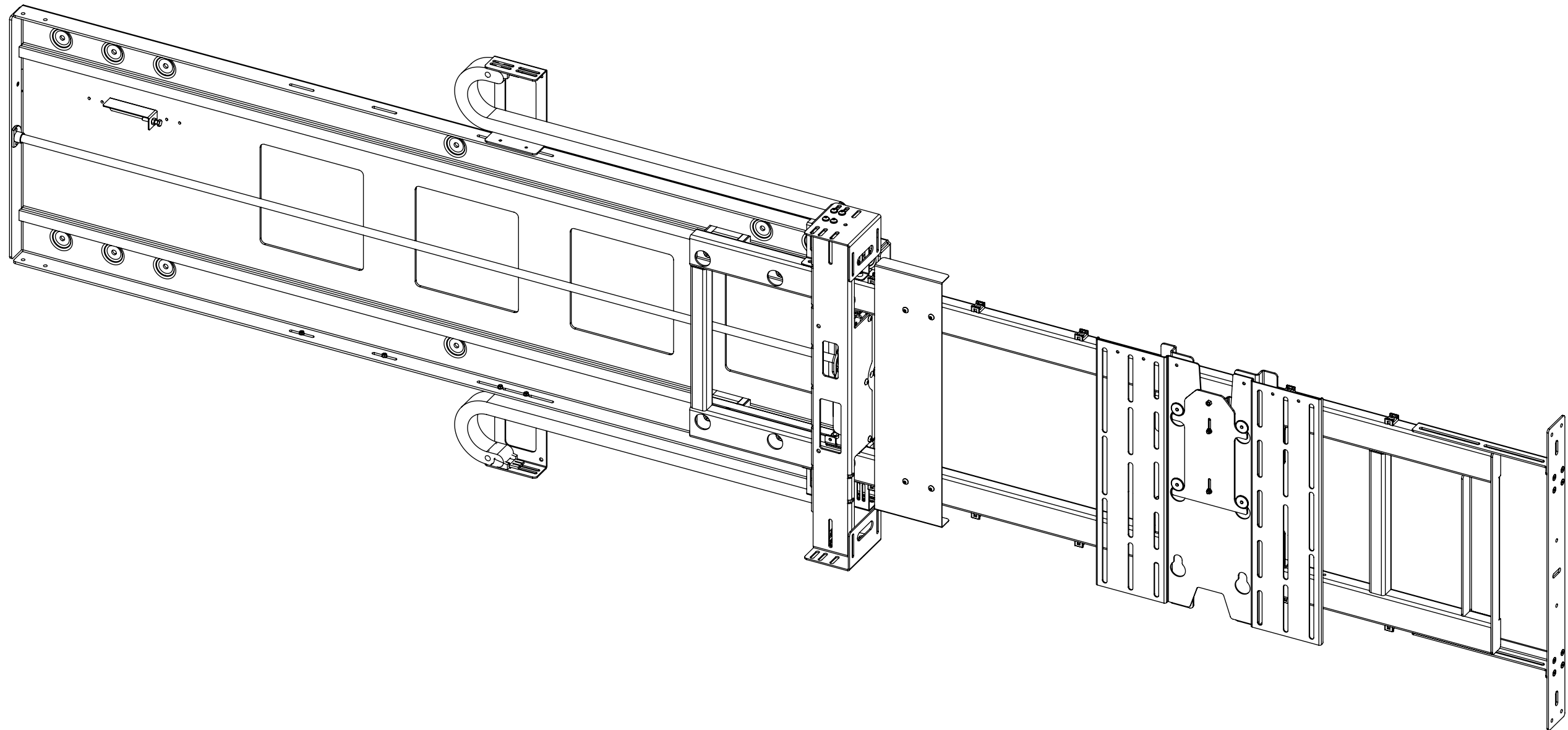


# LSM-HZ-FP 5

## HORIZONTAL FIXED PANEL LIFT SYSTEM



future automation



# LSM-HZ-FP 5

## HORIZONTAL FIXED PANEL LIFT SYSTEM



future automation

SPECIFICATION	MEASUREMENTS
Maximum Screen Width	1265mm (49 13/16")
Maximum Weight Capacity	50Kg (110lb)
Maximum Weight Capacity (Marine)	30Kg (66lb)
Internal Cabinet Width	1690mm (66 9/16")
Decibel Rating	52 dB
Packaging Dimensions	1790 x 890 x 270mm (70 1/2" x 35 1/16" x 10 5/8")
Shipping Weight	51Kg (112lb)
Movement Type	Motorised
Power Supply Required	110V - 240V AC
Power Consumption	250 - 500W
Power Consumption Standby	3W
Mounting Patterns Supported	VESA 400, 300, 200 W x 400, 300, 200 H
Control Options	IR Remote, RS232, Contact Closure, RF Available
Product Options / Features	Specific B&O and Loewe mounts / adapters, Custom RAL paint finishes
Package Contents	Mechanism, IR remote control
Marine Suitable	Yes (Indoor Marine Only)

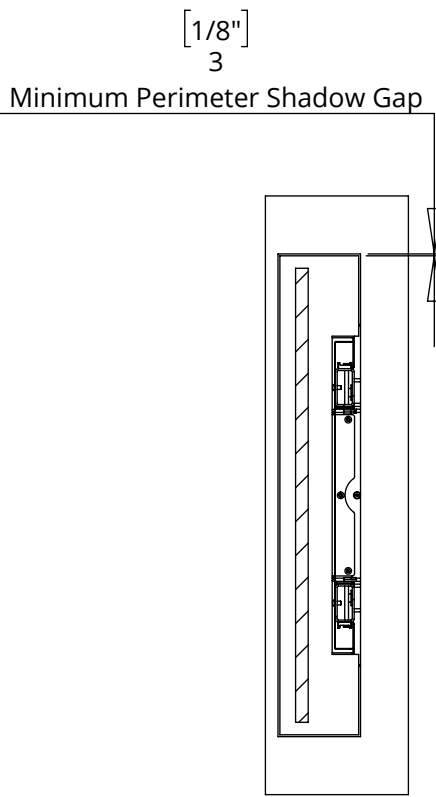
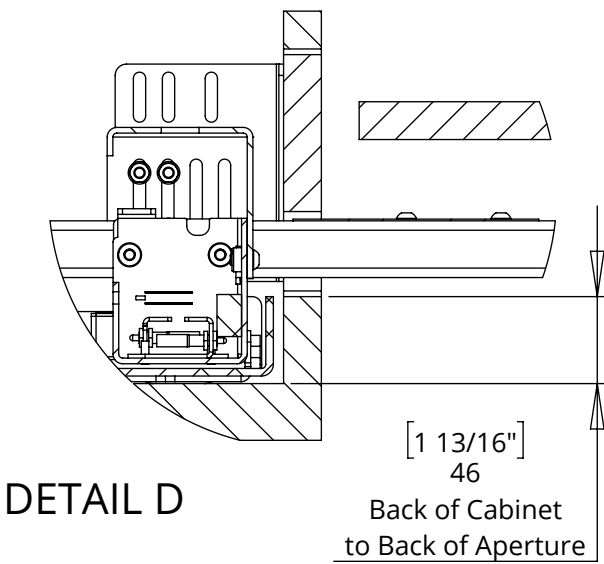
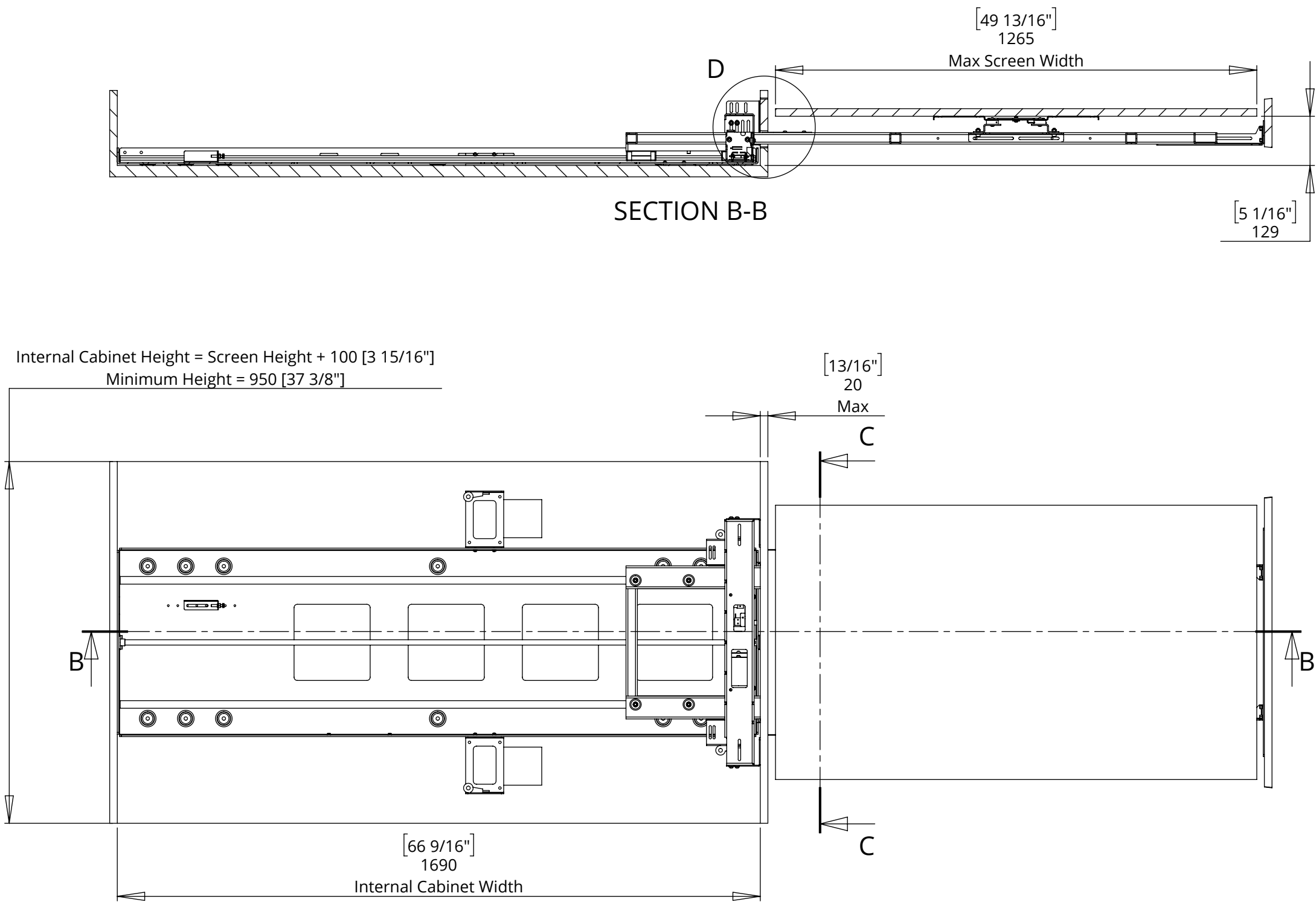
# LSM-HZ-FP 5

## HORIZONTAL FIXED PANEL LIFT SYSTEM



future automation

### MECHANISM OUT OF CABINET



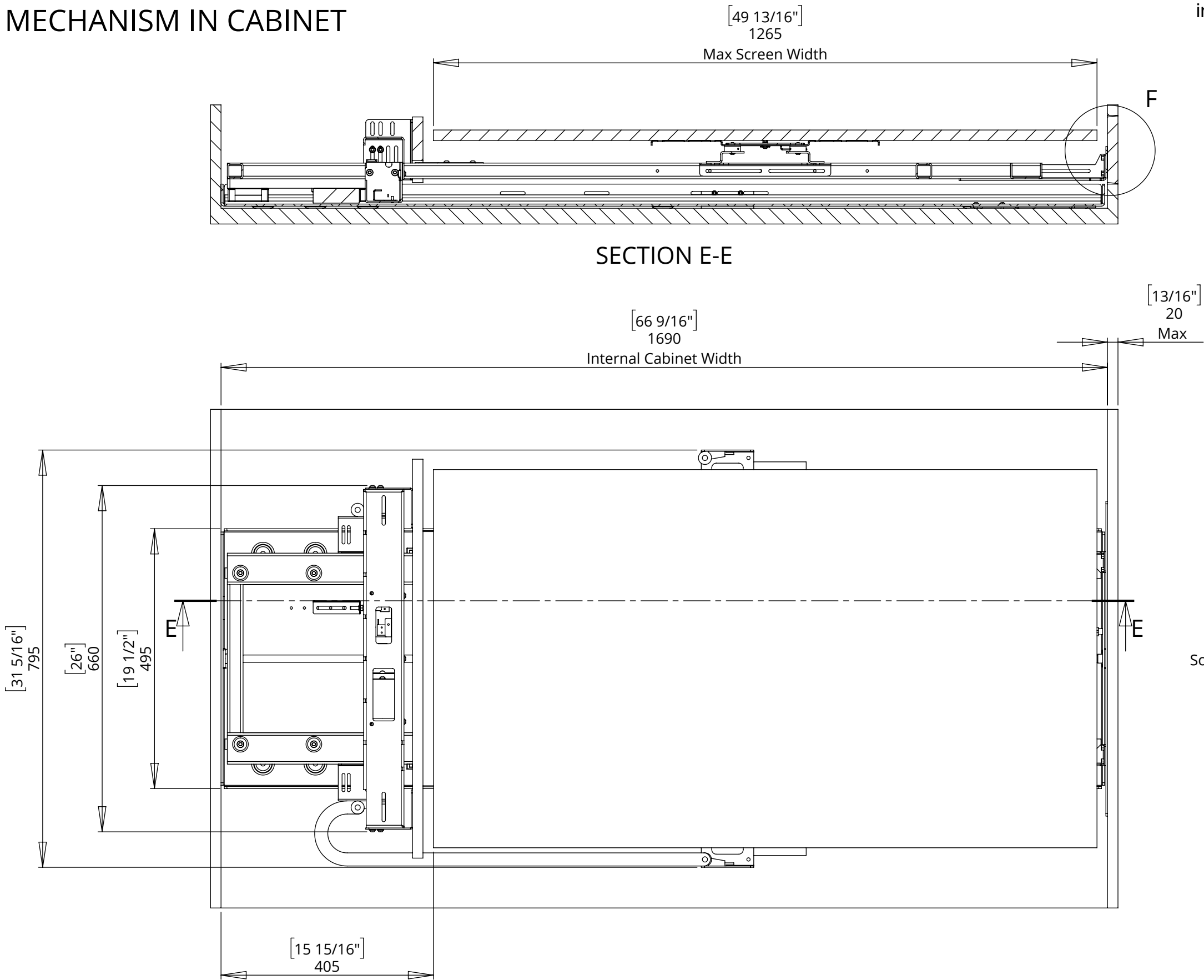
# LSM-HZ-FP 5

## HORIZONTAL FIXED PANEL LIFT SYSTEM

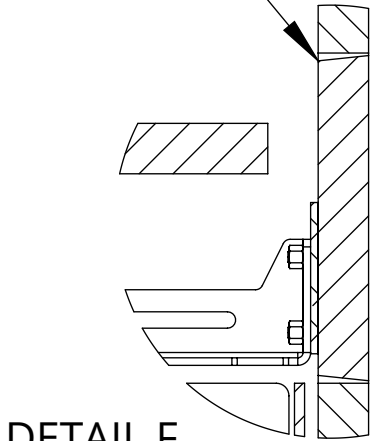


future automation

### MECHANISM IN CABINET



Shown with tapered fixed panel  
in square cabinet aperture to improve fit.



Aperture Width =  
Screen Depth + 95  $[3 \frac{3}{4}"]$   
(Minimum 131  $[5 \frac{3}{16}"]$ )

Aperture Height =  
Screen Height + 46mm  $[1 \frac{13}{16}"]$   
Minimum 676mm  $[26 \frac{5}{8}"]$

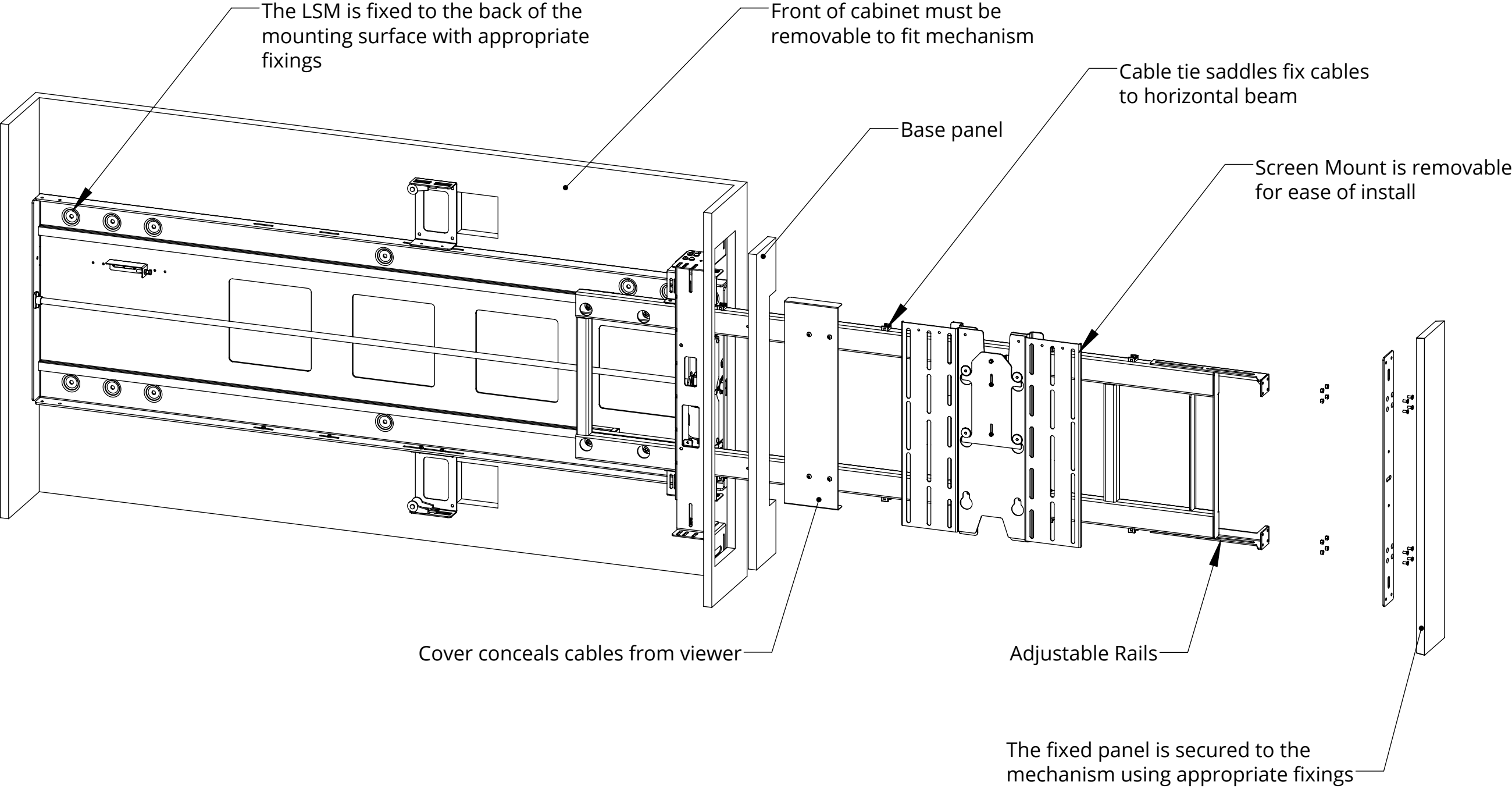
# LSM-HZ-FP 5

## HORIZONTAL FIXED PANEL LIFT SYSTEM



future automation

### MECHANISM INSTALLATION OVERVIEW



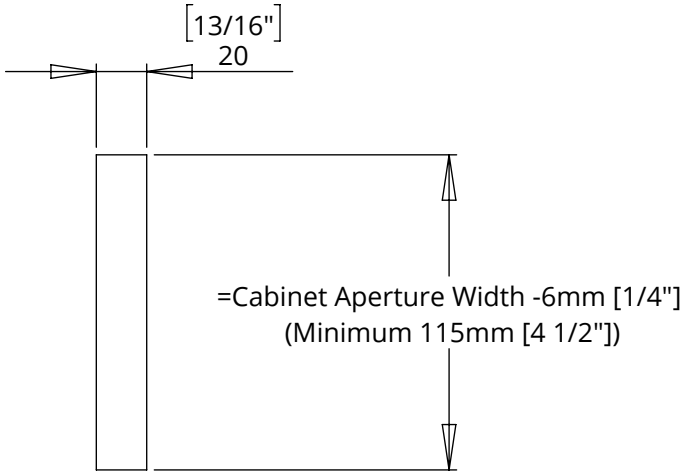
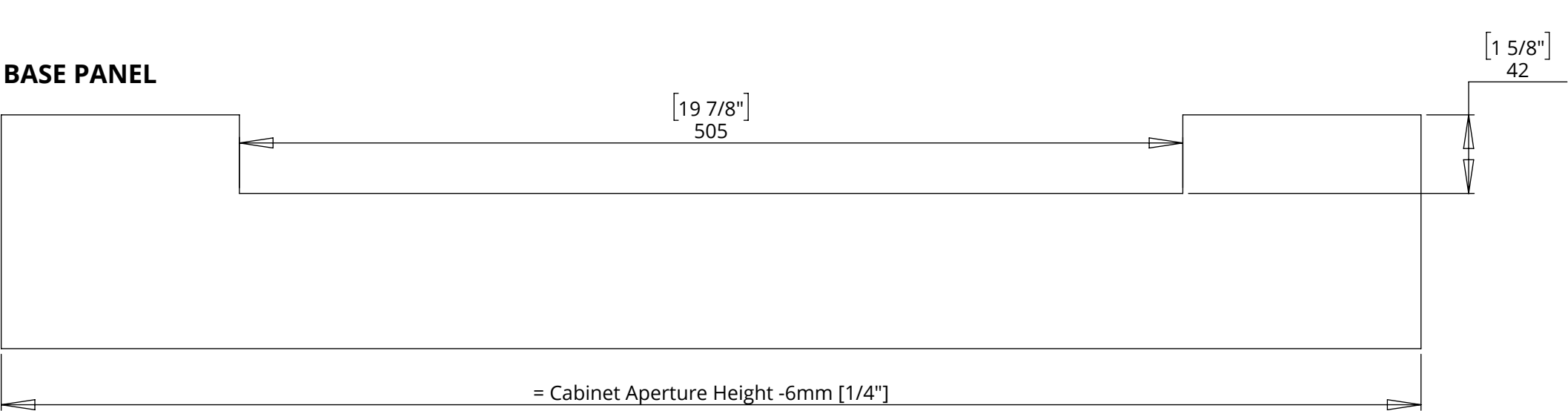
# LSM-HZ-FP 5

## HORIZONTAL FIXED PANEL LIFT SYSTEM

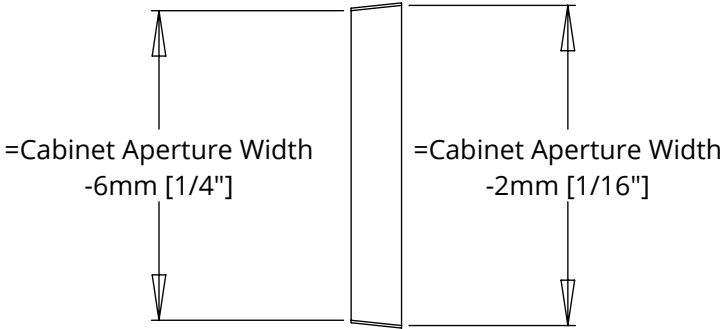
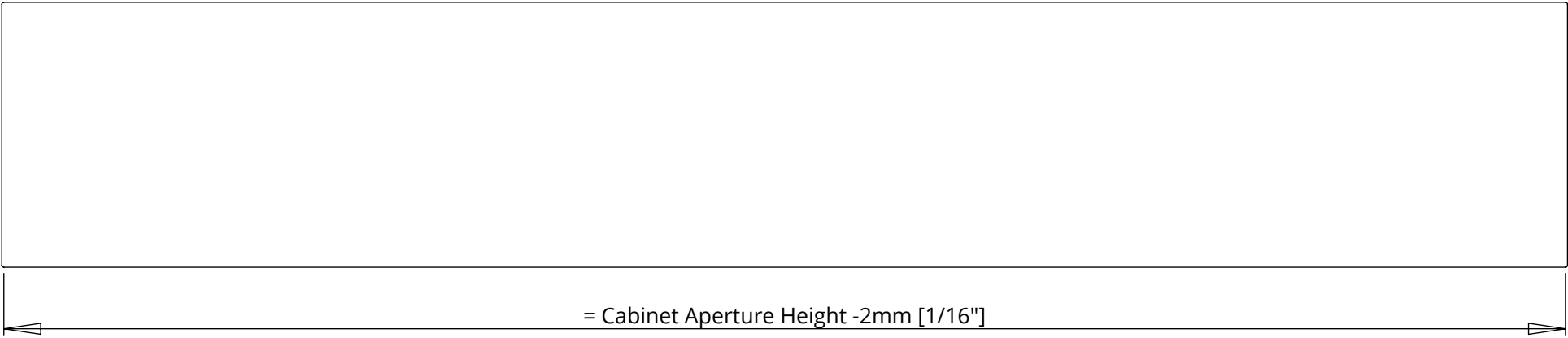
NOTE: A tapered fixed panel creates a good fit in the Cabinet Aperture and helps the fixed panel locate within the cabinet.

### BASE PANEL AND FIXED PANEL DETAILS

#### BASE PANEL



#### FIXED PANEL



# LSM-HZ-FP 5

## HORIZONTAL FIXED PANEL LIFT SYSTEM

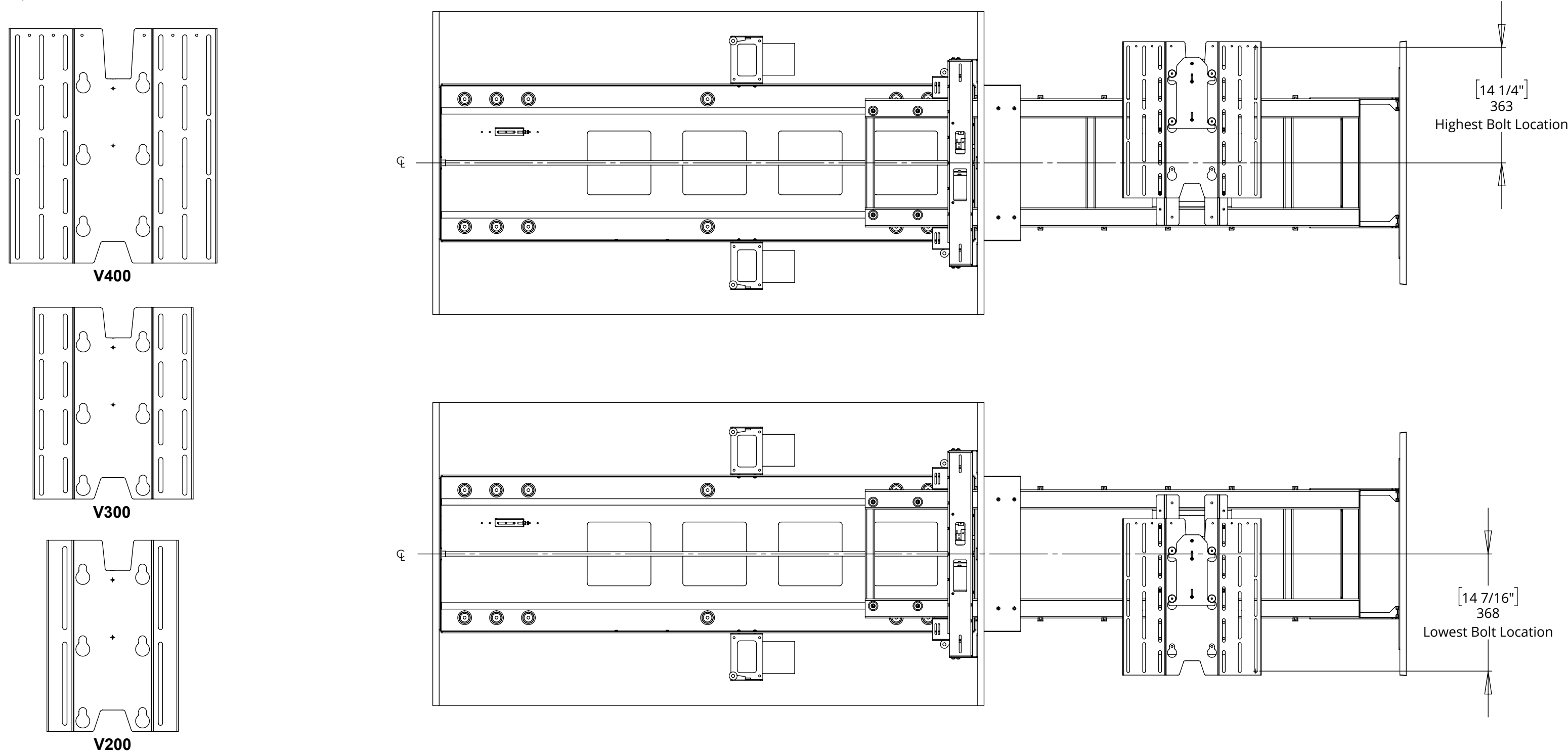


future automation

### SCREEN MOUNT ADJUSTABILITY

A standard adjustable height VESA 400 mount is included. This is also compatible with VESA 300 and 200 mounting patterns

Separate VESA 300 and 200 mounts are available.



# LSM-HZ-FP 5

## HORIZONTAL FIXED PANEL LIFT SYSTEM



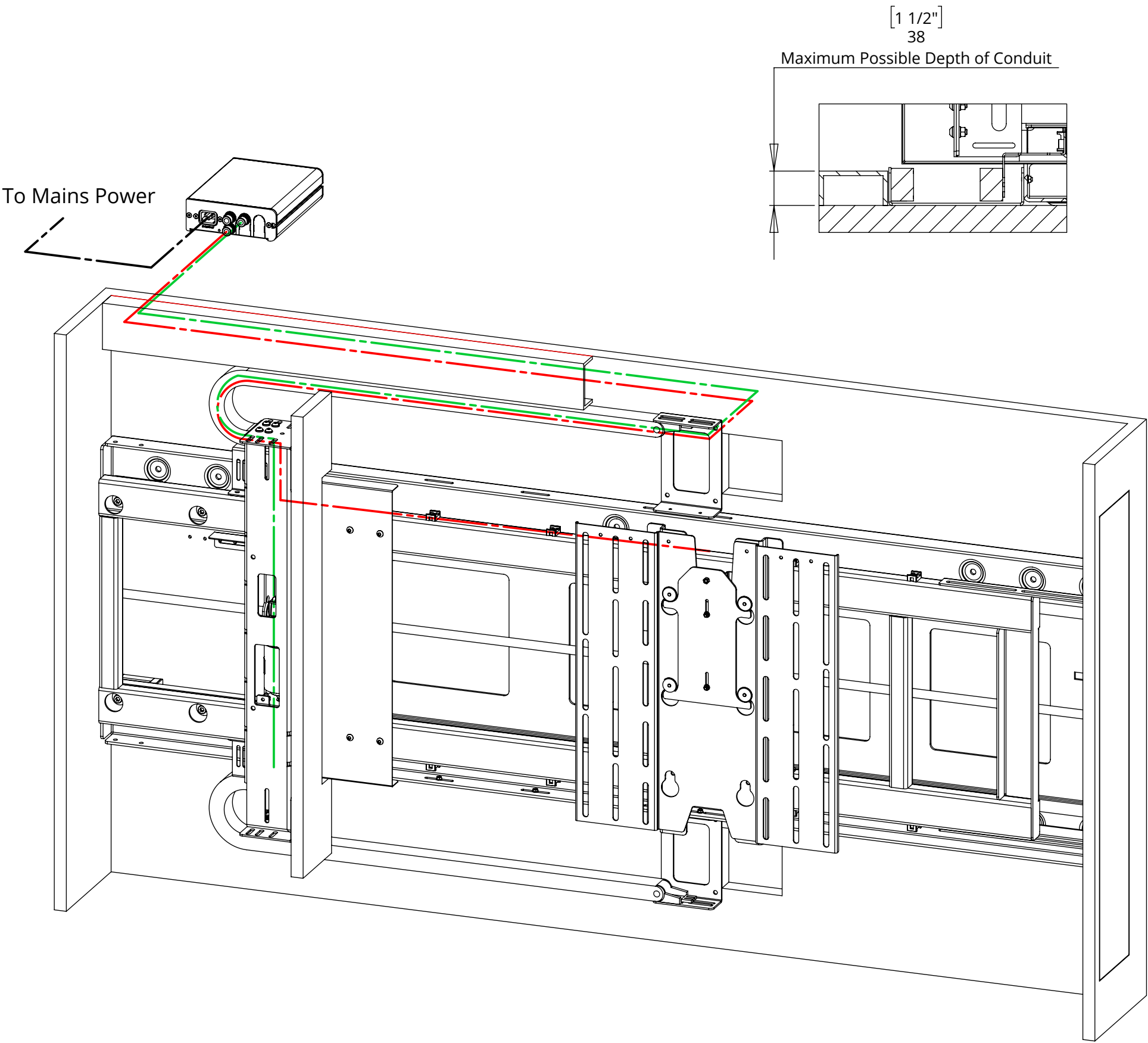
future automation

### CABLE ROUTING

The LSM-HZ comes with cable tie saddles on the outside of the two horizontal beams. A cable cover is supplied to conceal these cables when in use. Cables must be routed carefully to prevent any interference with the LSM beam as it operates.

Screen and Mechanism cables should be routed to a control box outside of the cabinet via an opening in the back of the cabinet or a conduit leading to the bottom.

- SCREEN CABLES
- MECHANISM CABLES
- POWER CABLE





# LSM-HZ-FP 5

## HORIZONTAL FIXED PANEL LIFT SYSTEM



future automation

### OVERALL MECHANISM DIMENSIONS

#### MECHANISM OUT POSITION

