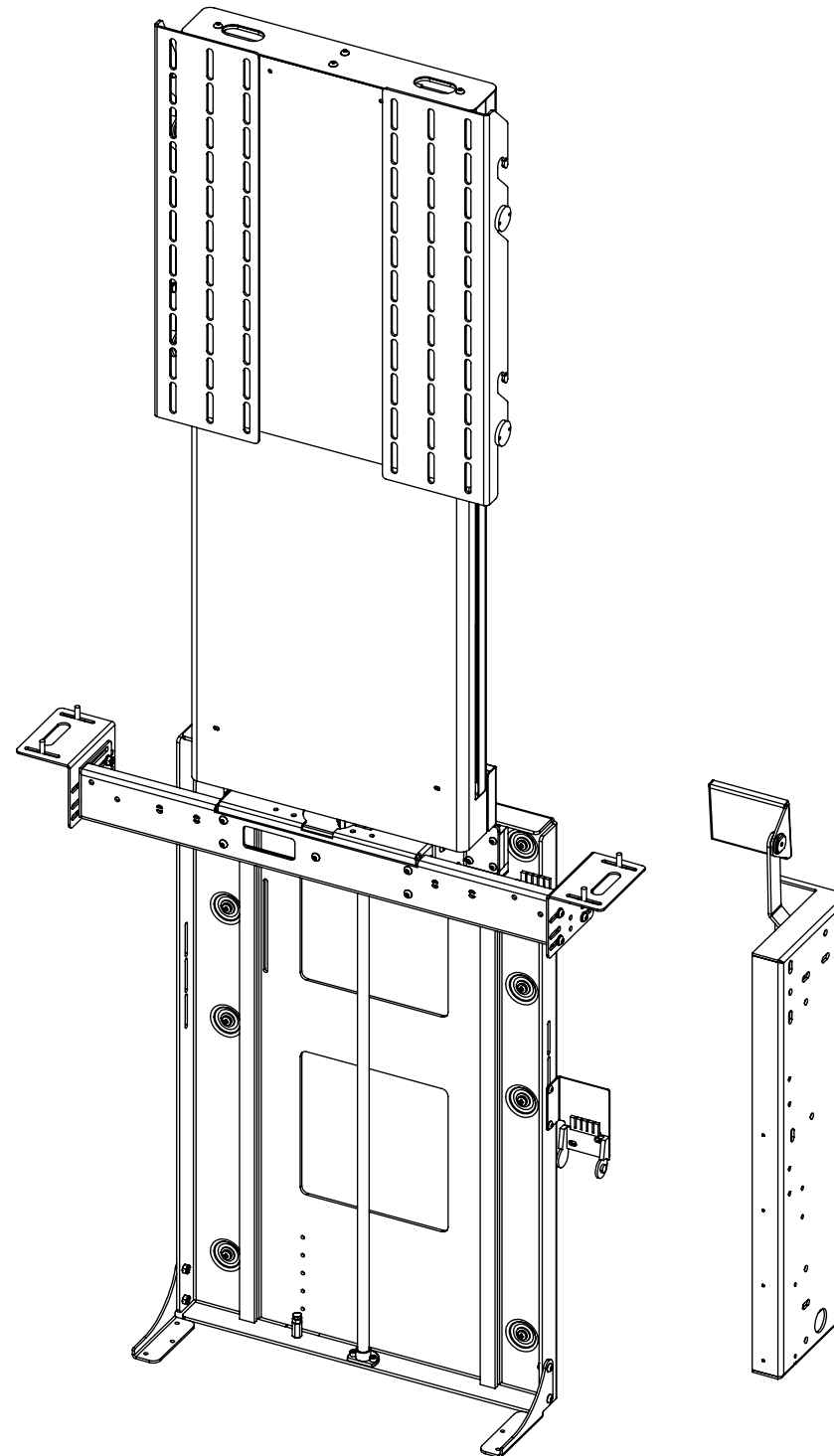


# LSM-TU-HF 4

## LIFT SYSTEM TELESCOPIC WITH HEAVY FLAP



future automation



# LSM-TU-HF 4

## LIFT SYSTEM TELESCOPIC WITH HEAVY FLAP



future automation

SPECIFICATION	MEASUREMENTS
Maximum Screen Size	670mm (26 3/8") Height, 60mm (2 3/8") Depth
Maximum Weight Capacity	30Kg (66lb)
Speed	40mm/s
Maximum Lift Distance	1122mm (44 3/16") from top of screen to cabinet top
Internal Cabinet Height	820mm (32 5/16")
Decibel Rating	52dB
Packaging Dimensions	TBC
Shipping Weight	TBC
Movement Type	Motorised
Power Supply Required	110V - 240V AC
Power Consumption	250 - 500W
Power Consumption Standby	3W
Mounting Patterns Supported	VESA 400, 300, 200 W x 400, 300, 200 H
Control Options	IR Remote, RS232, Contact Closure
Product Options / Features	Specific B&O and Loewe mounts / adapters, Custom RAL paint finishes
Package Contents	Mechanism, IR remote control
Marine Suitable	No

# LSM-TU-HF 4

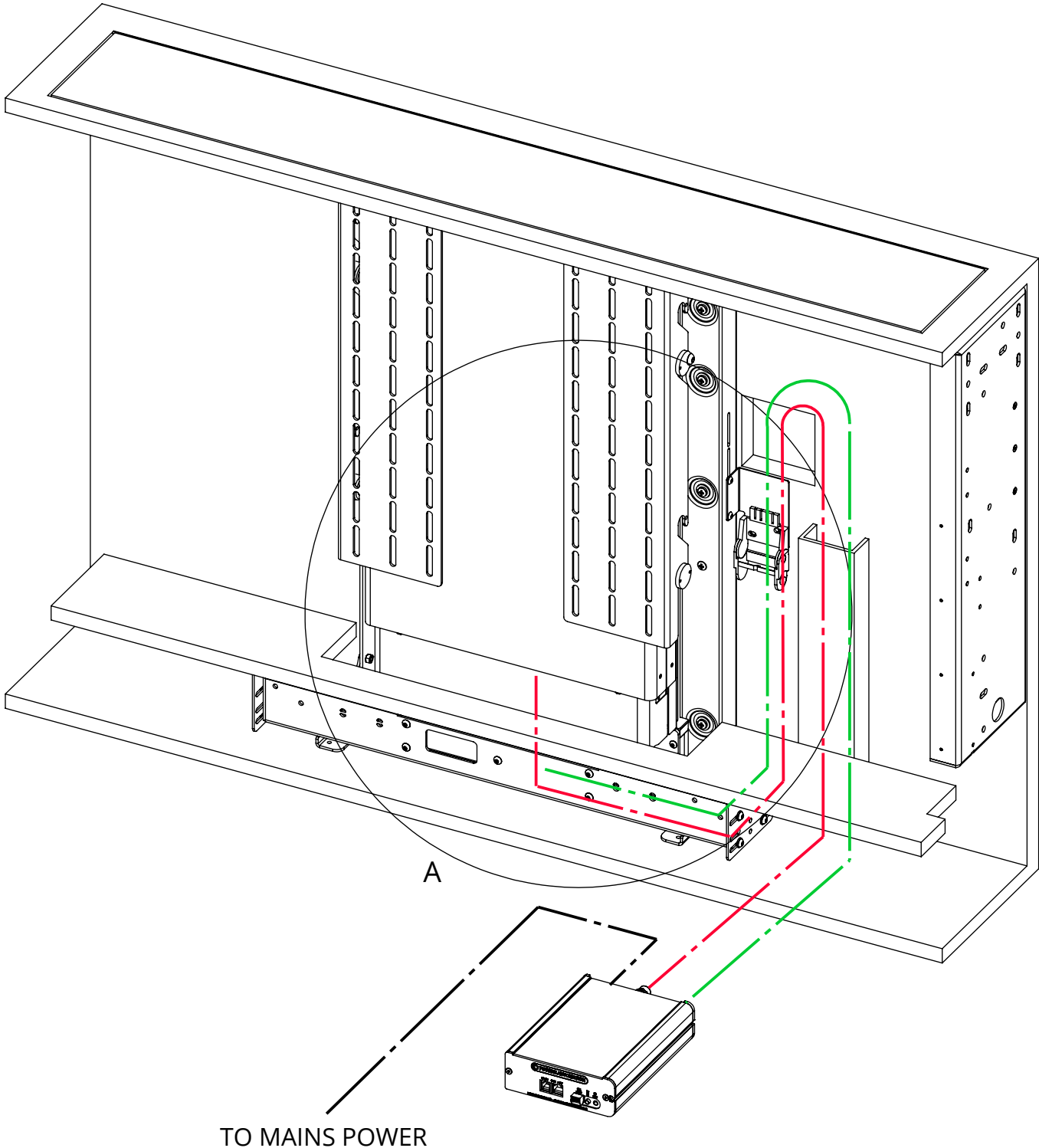
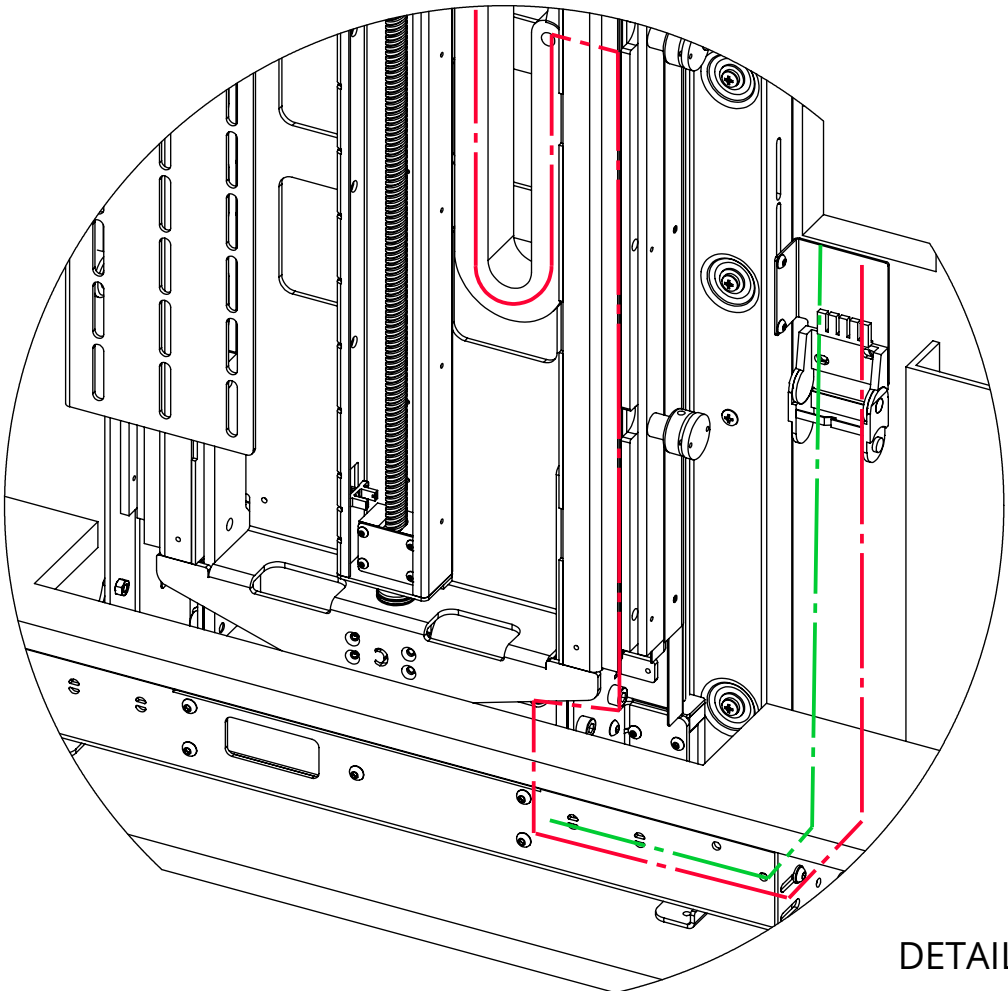
## LIFT SYSTEM TELESCOPIC WITH HEAVY FLAP

### CABLE ROUTING

Screen Cables enter the top of the Telescopic Unit and are fed down through the Cable Track within. This can be accessed by removing the two front covers of the Telescopic Unit. The cables then pass through the LSM Beam and into the LSM Cable Track. Cables must be routed carefully to prevent any interference with the LSM beam as it operates.

Screen and Mechanism cables should be routed to a control box outside of the cabinet via an opening in the back of the cabinet or a conduit leading to the bottom.

- SCREEN CABLES
- MECHANISM CABLES
- POWER CABLE



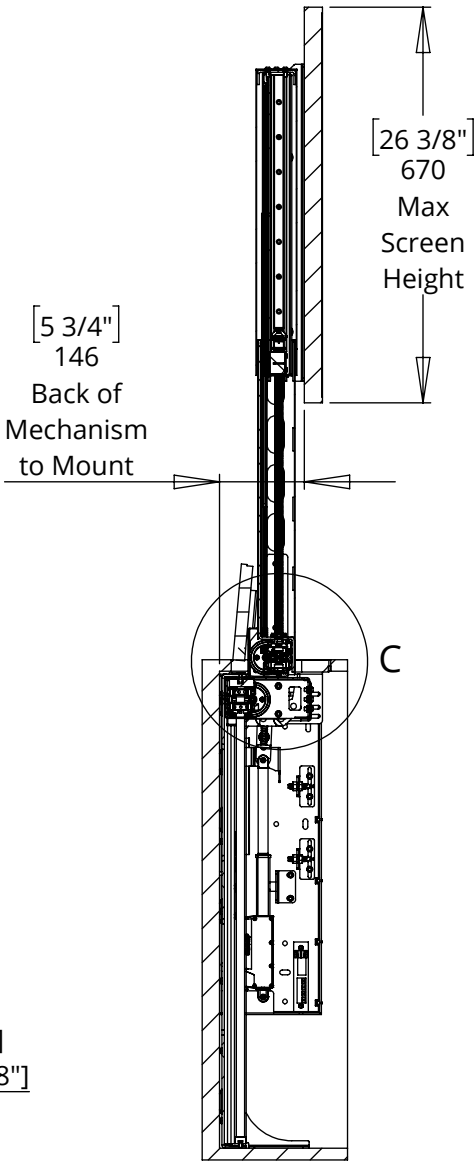
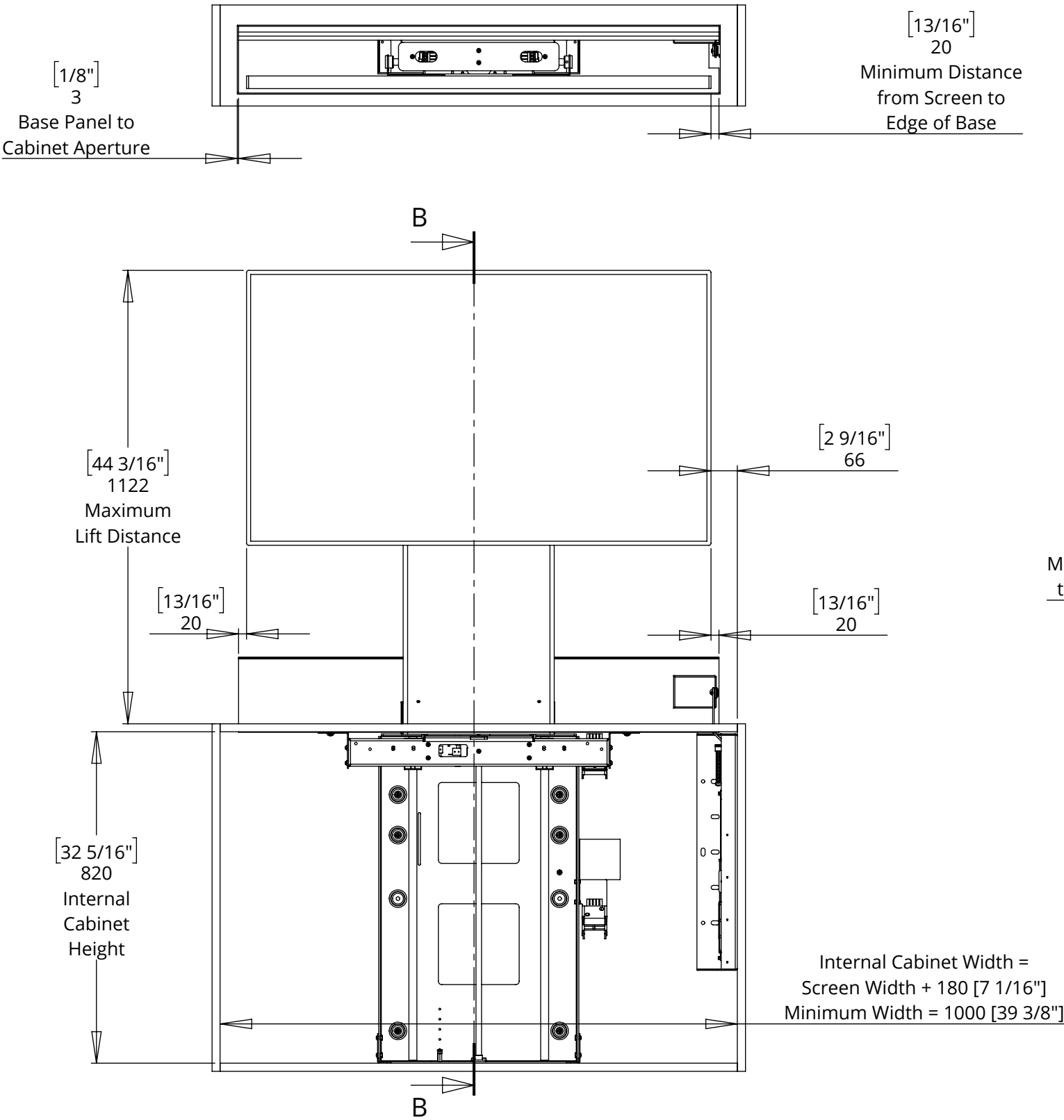
# LSM-TU-HF 4

## LIFT SYSTEM TELESCOPIC WITH HEAVY FLAP

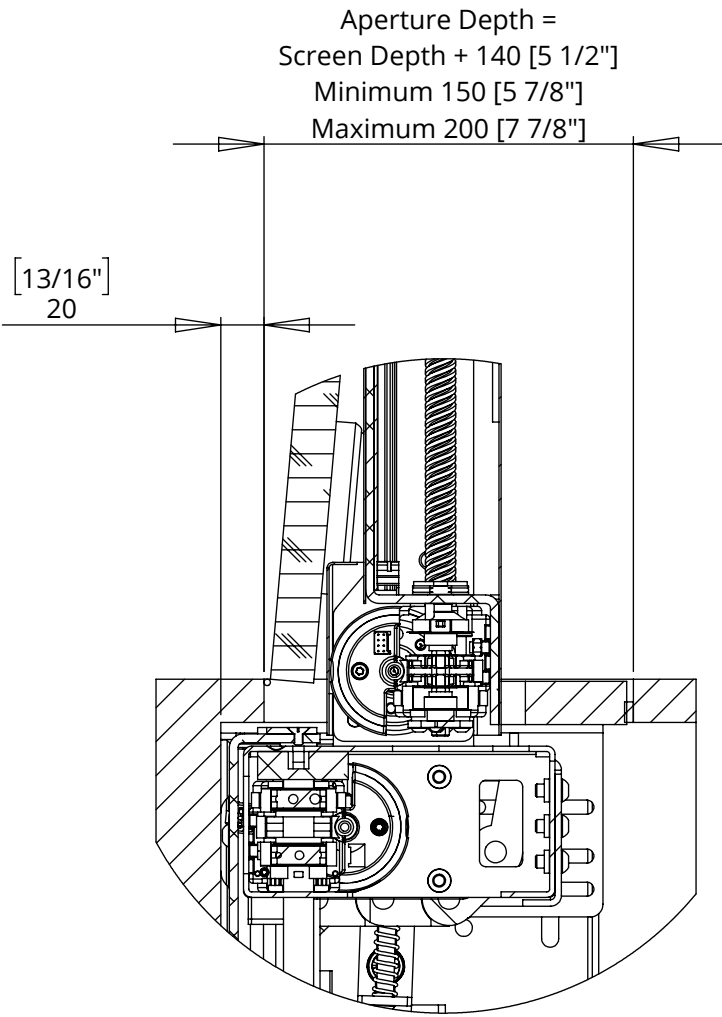


future automation

### MECHANISM UP - OUT OF CABINET



SECTION B-B



DETAIL C

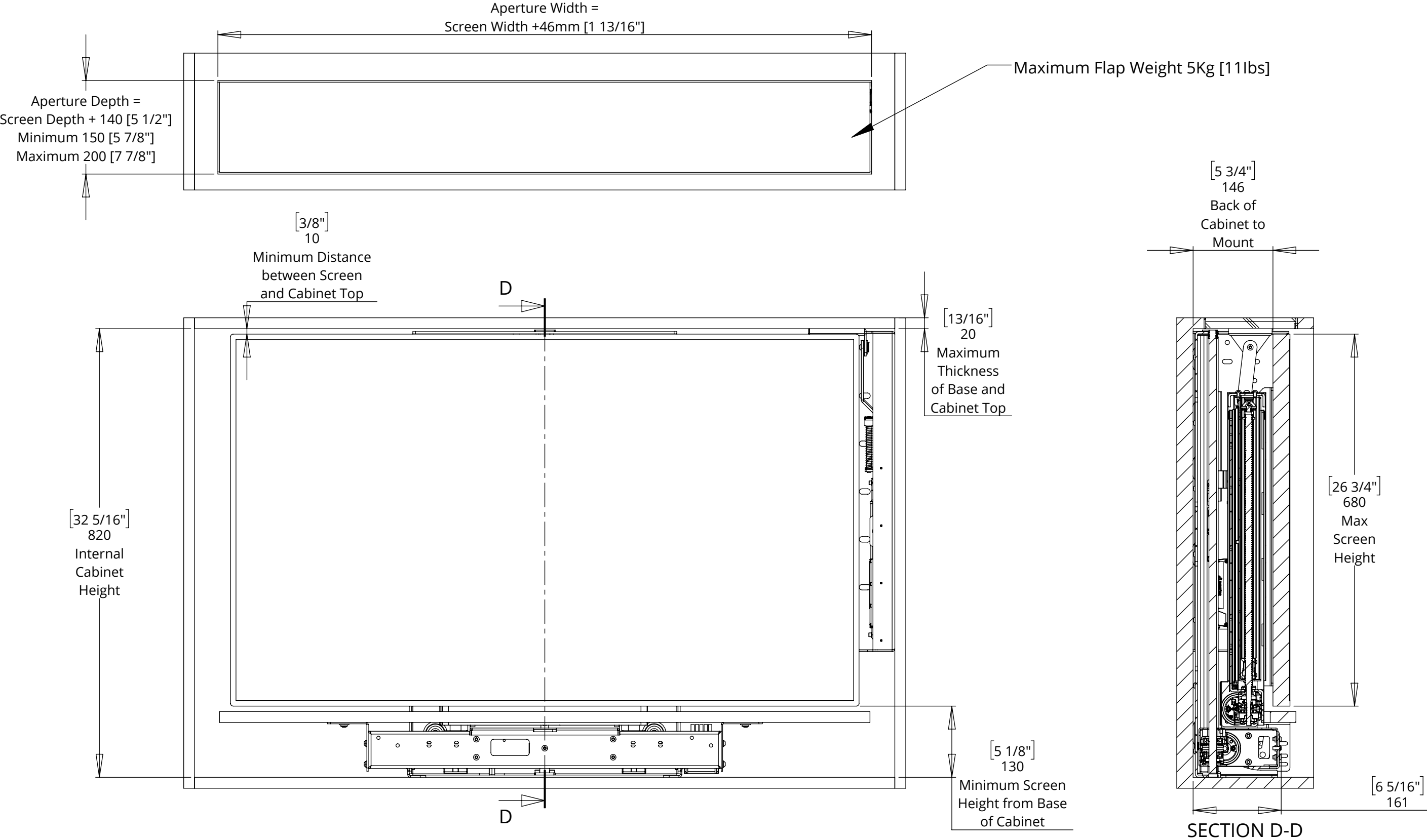
# LSM-TU-HF 4

## LIFT SYSTEM TELESCOPIC WITH HEAVY FLAP



future automation

### MECHANISM DOWN - IN CABINET



# LSM-TU-HF 4

## LIFT SYSTEM TELESCOPIC WITH HEAVY FLAP



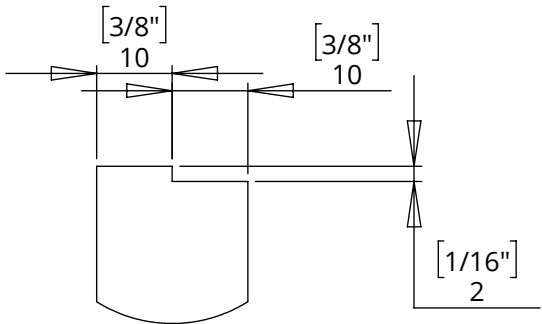
future automation

### BASE PANEL AND FLAP PANEL DETAILS

Flap depth dimensions are based on a 3mm thick piano hinge

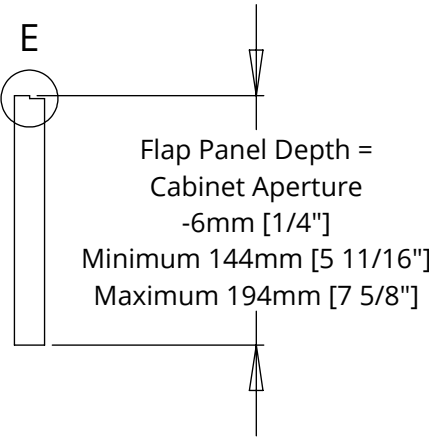
Required flap dimensions may vary dependant on the hinge used

**IMPORTANT: Flap Panel weight must not exceed 5Kg [11lbs]**

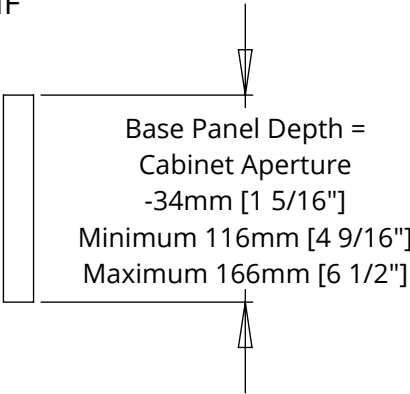
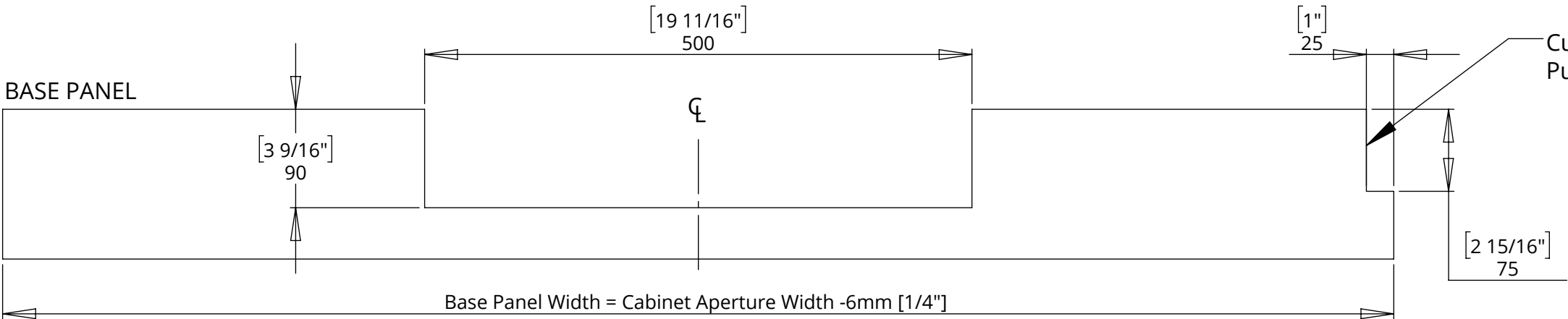


DETAIL E

FLAP PANEL



BASE PANEL

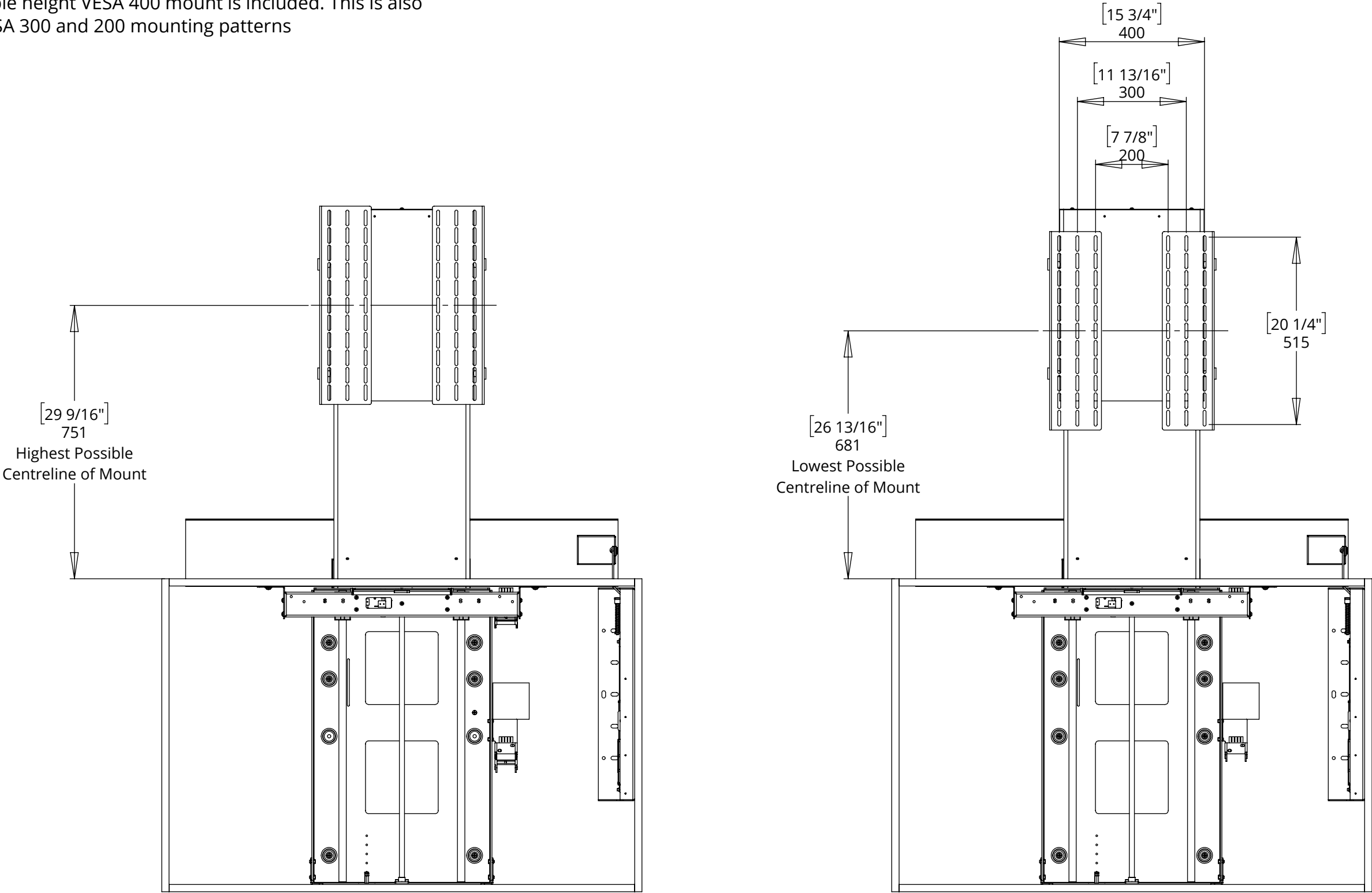


# LSM-TU-HF 4

## LIFT SYSTEM TELESCOPIC WITH HEAVY FLAP

### SCREEN MOUNT ADJUSTABILITY

A standard adjustable height VESA 400 mount is included. This is also compatible with VESA 300 and 200 mounting patterns



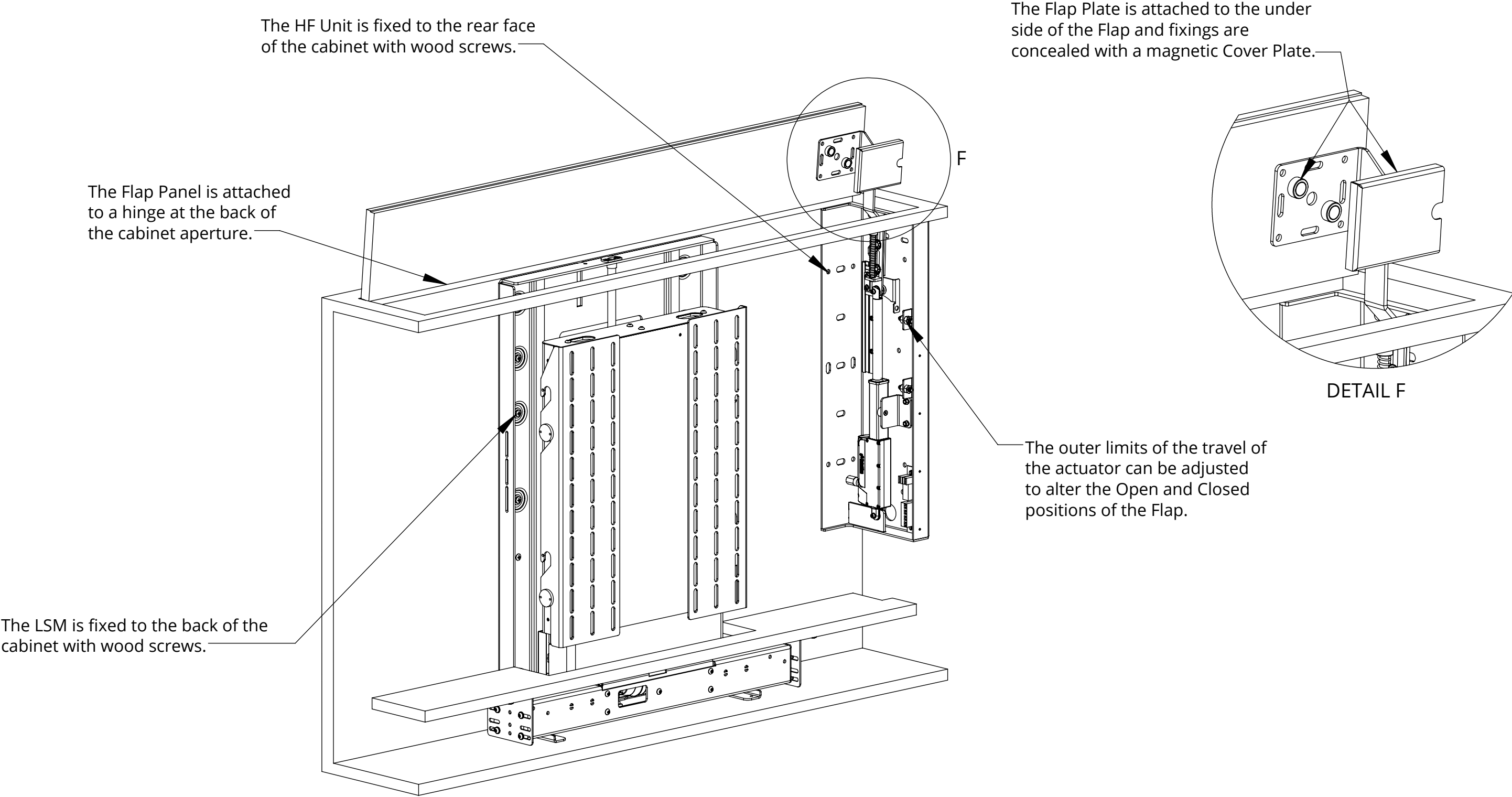
# LSM-TU-HF 4

## LIFT SYSTEM TELESCOPIC WITH HEAVY FLAP



future automation

### MECHANISM INSTALLATION OVERVIEW

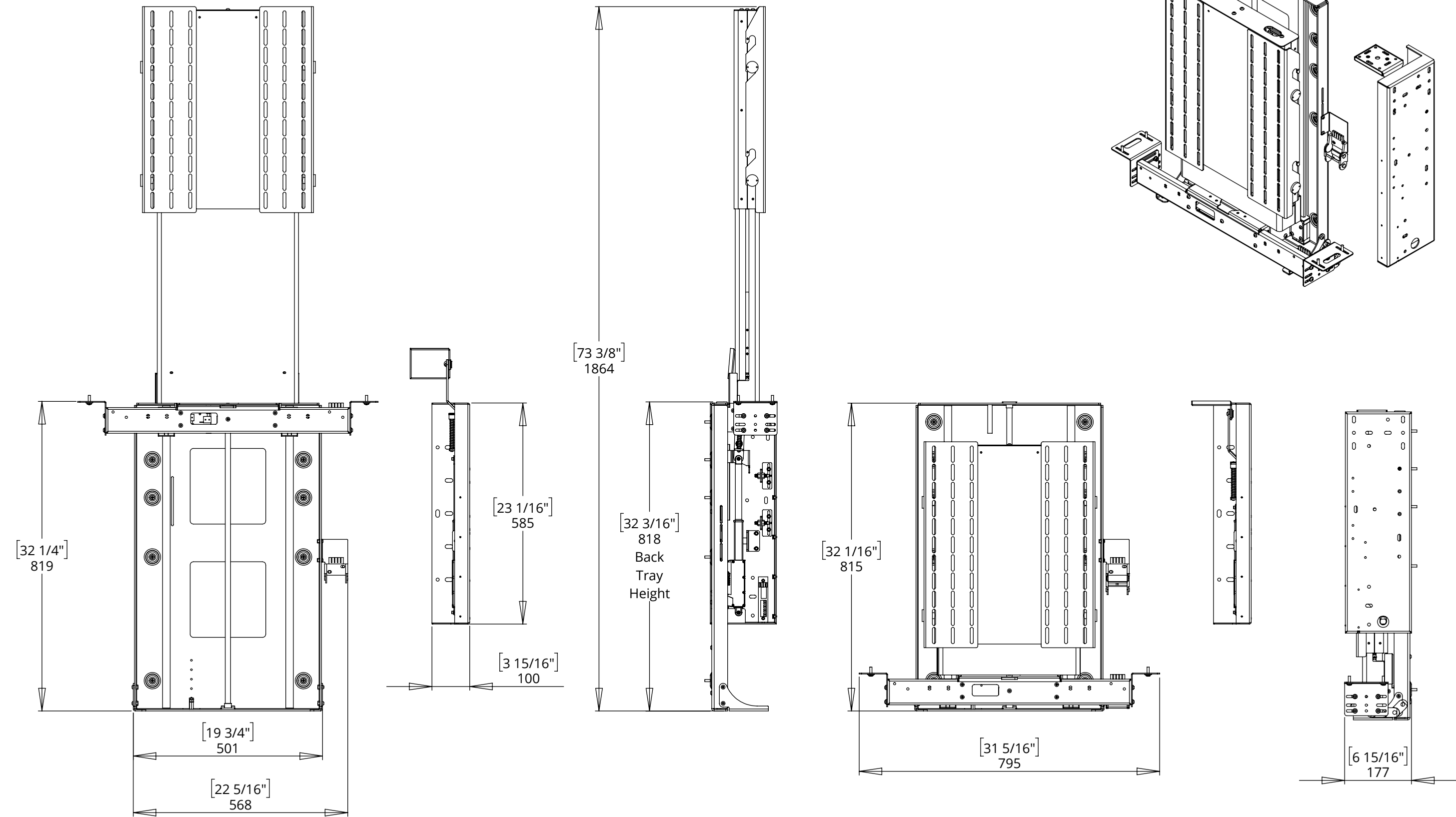




# LSM-TU-HF 4

## LIFT SYSTEM TELESCOPIC WITH HEAVY FLAP

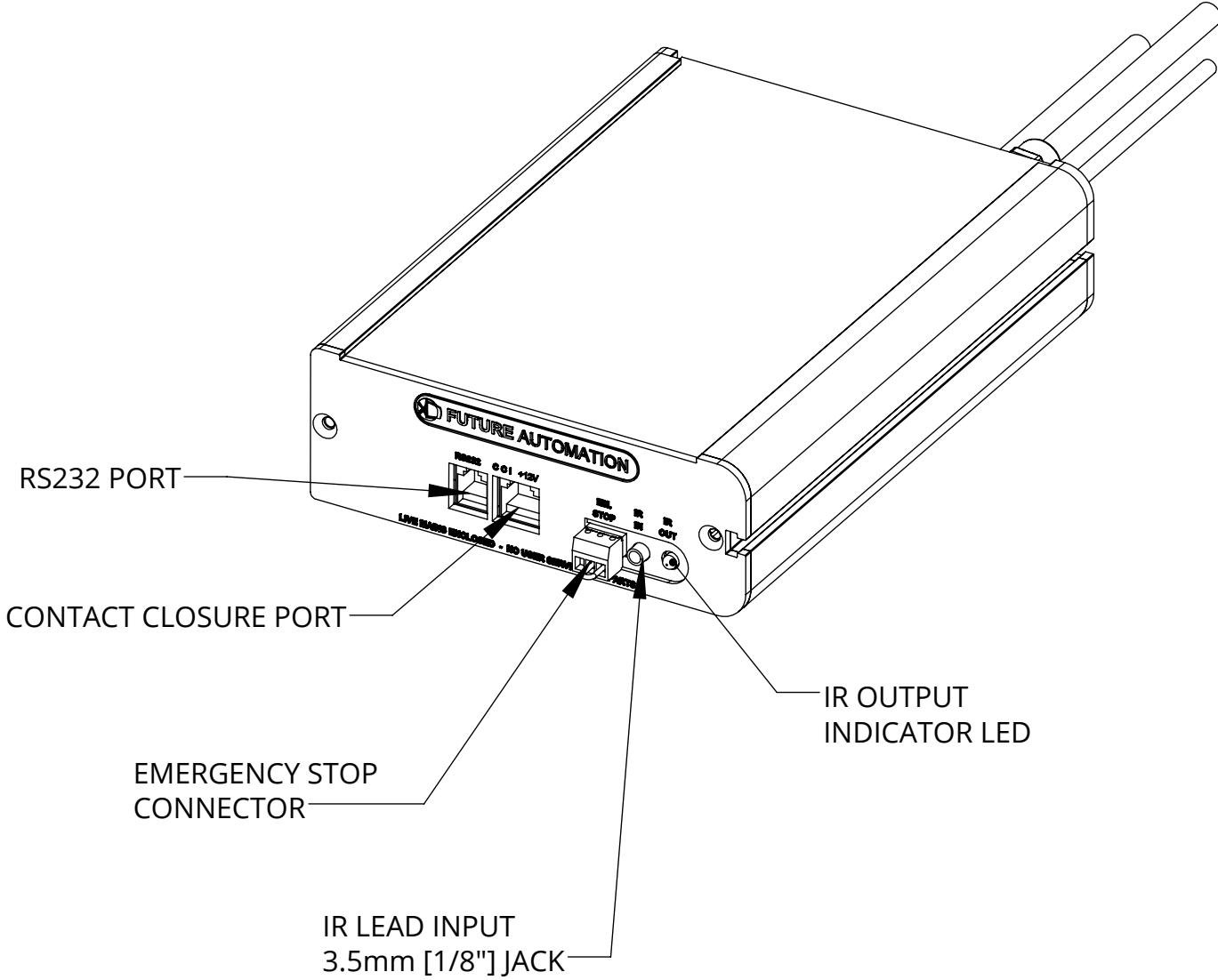
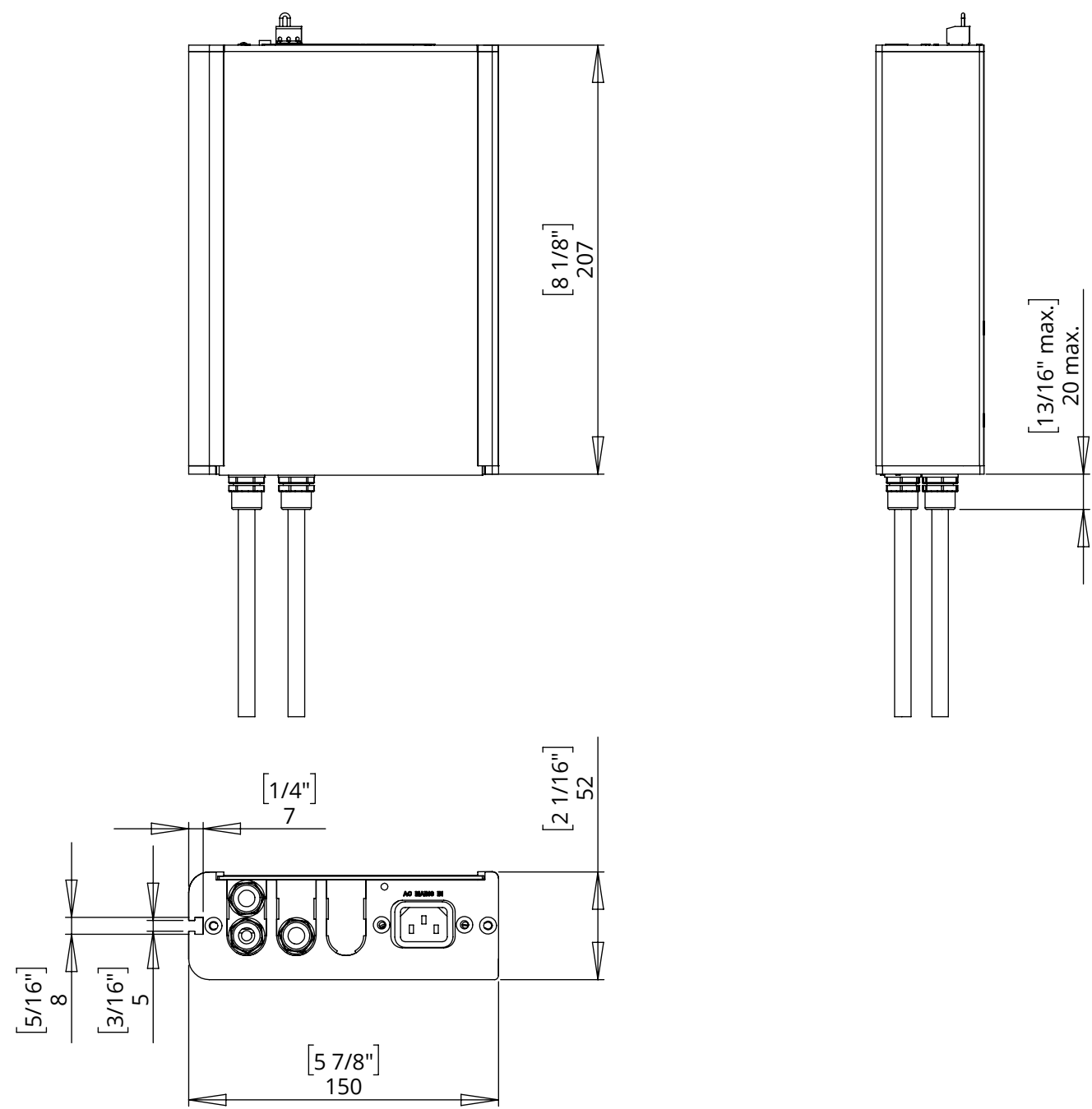
### OVERALL MECHANISM DIMENSIONS



# LSM-TU-HF 4

## LIFT SYSTEM TELESCOPIC WITH HEAVY FLAP

### CONTROL BOX DIMENSIONS



### NOTES

CABLE LOOM LENGTH SUPPLIED AT APPROX. 3m [118"]

CONTOL BOX **MUST** BE LOCATED IN ACCESSIBLE LOCATION