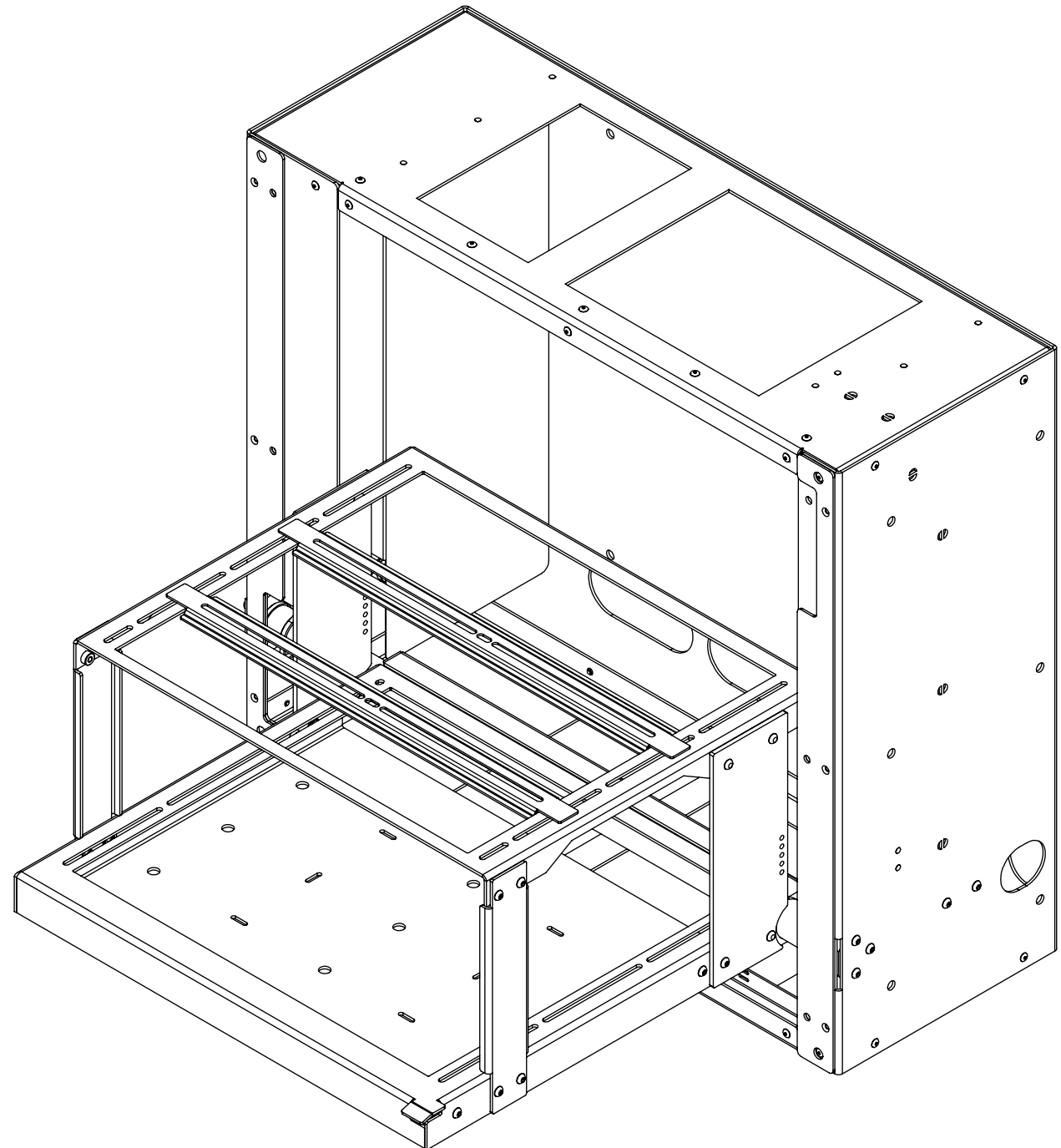
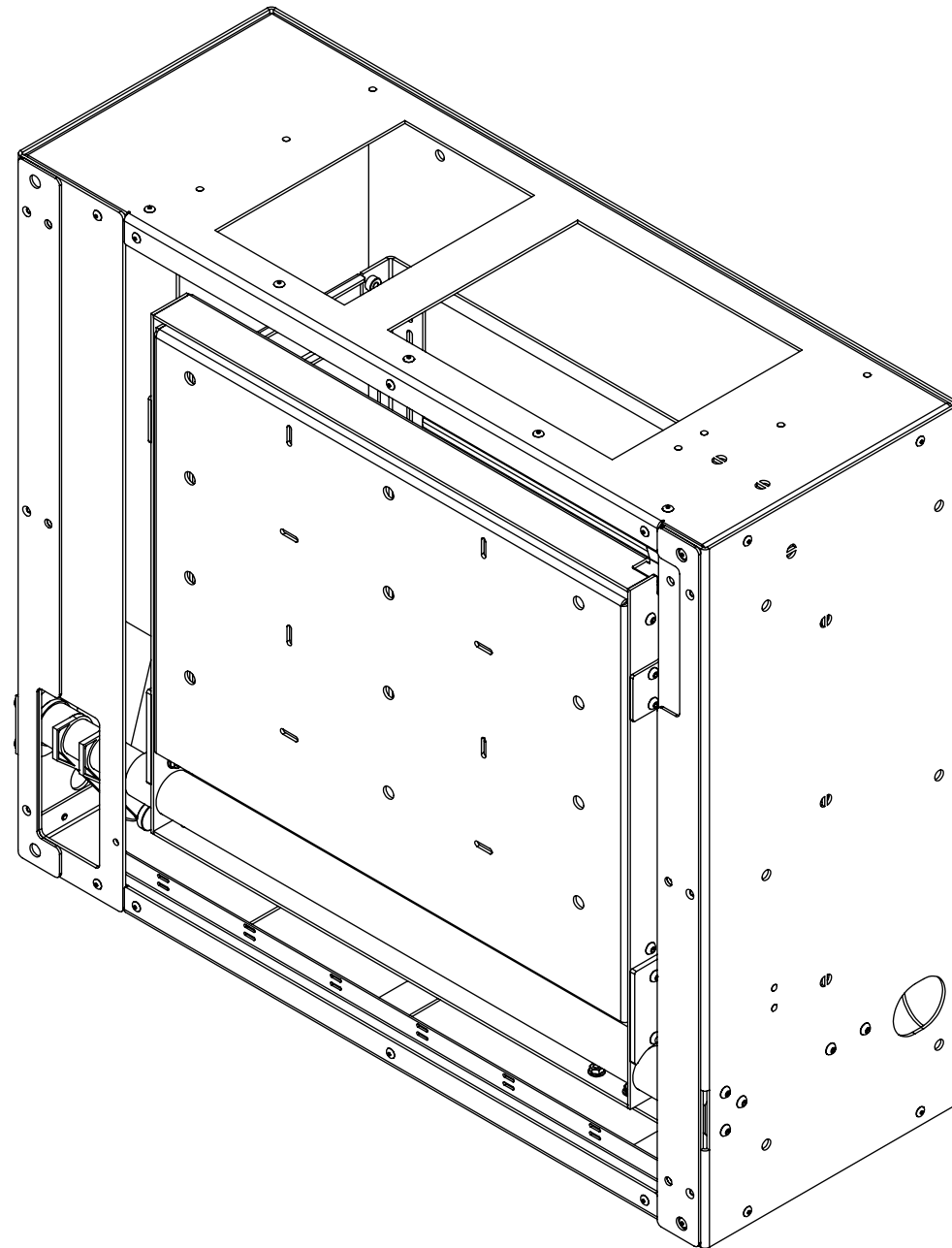


PH2

PROJECTOR HINGE MECHANISM



future automation



PH2

PROJECTOR HINGE MECHANISM



SPECIFICATION	MEASUREMENTS
Maximum Projector Dimensions	470x480x220mm (18 1/2" X 18 7/8" X 8 11/16")
Shipping Dimensions	1000x900x600mm (39 3/8" X 35 7/16" X 23 5/8")
Maximum Projector Weight	50Kg (110lb)
Shipping Weight	100Kg (220lb)
Movement Type	Motorised
Standard Finish	Powder-coated black
Noise level	52db
Power Supply Required	110V - 240V AC
Control Options	IR Remote, RS232, Contact Closure, RF Available
Product Options / Features	Custom RAL paint finishes
Package Contents	Mechanism, IR remote control

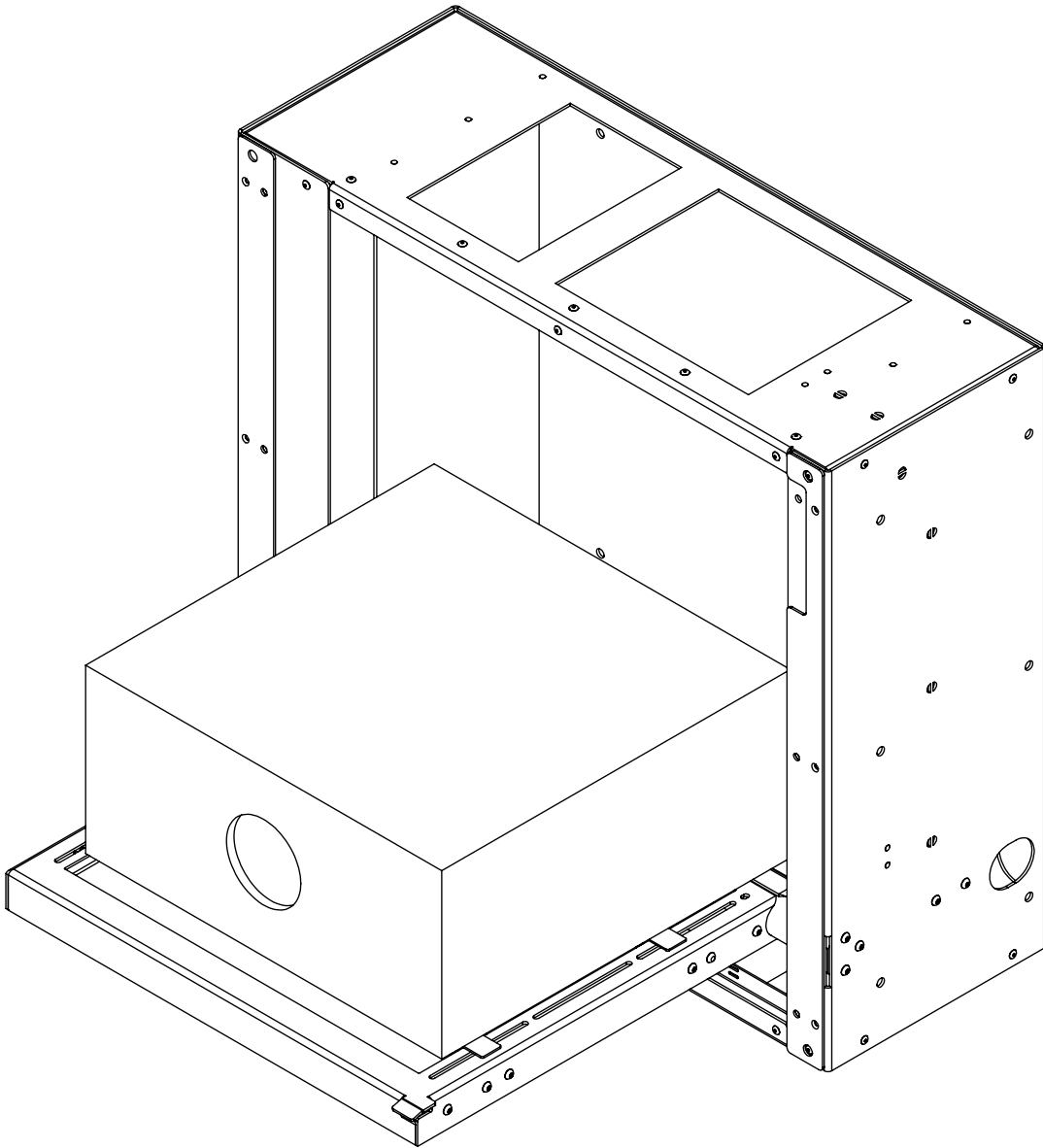
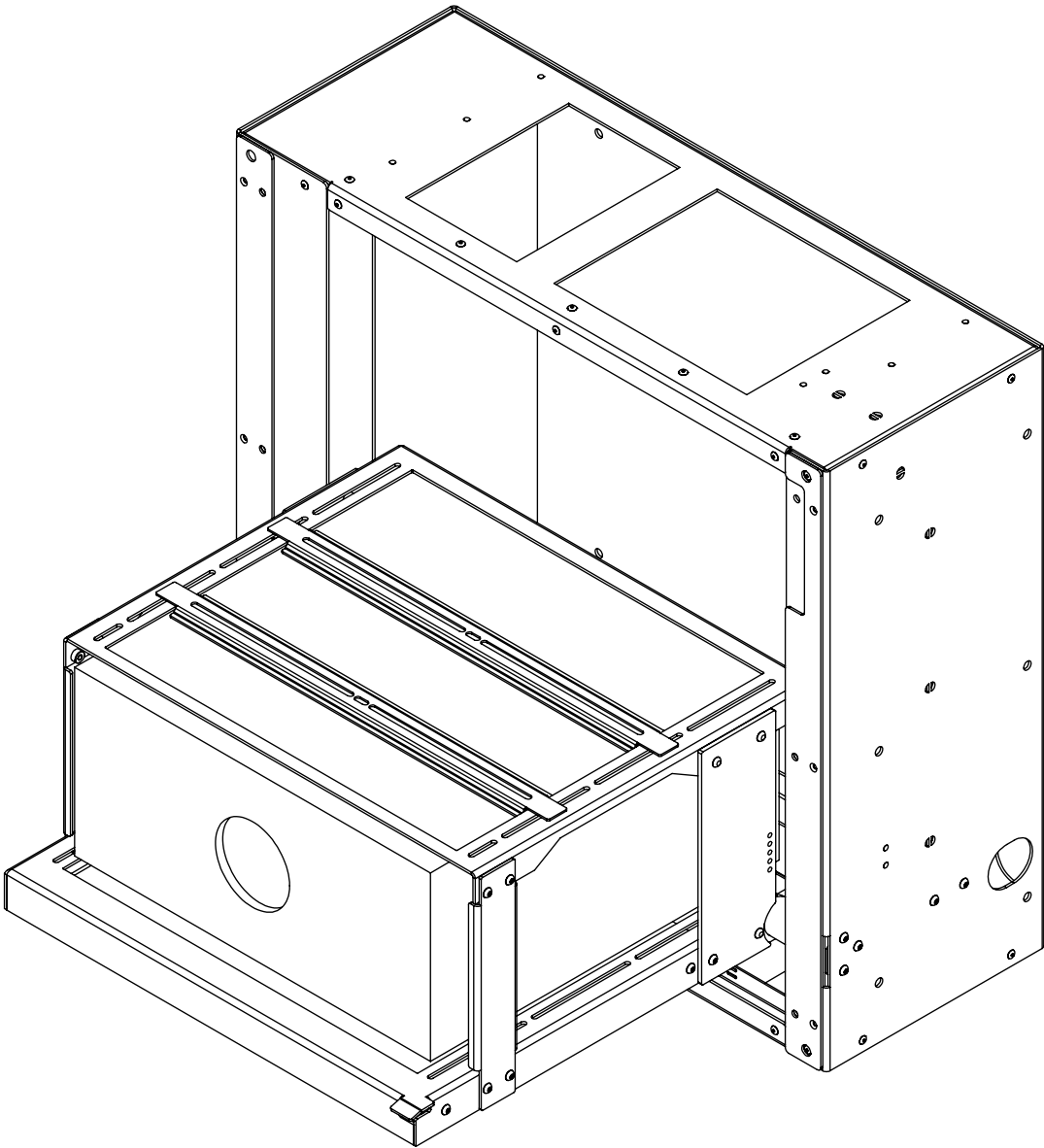
PH2

PROJECTOR HINGE MECHANISM



future automation

MOUNTING OPTIONS



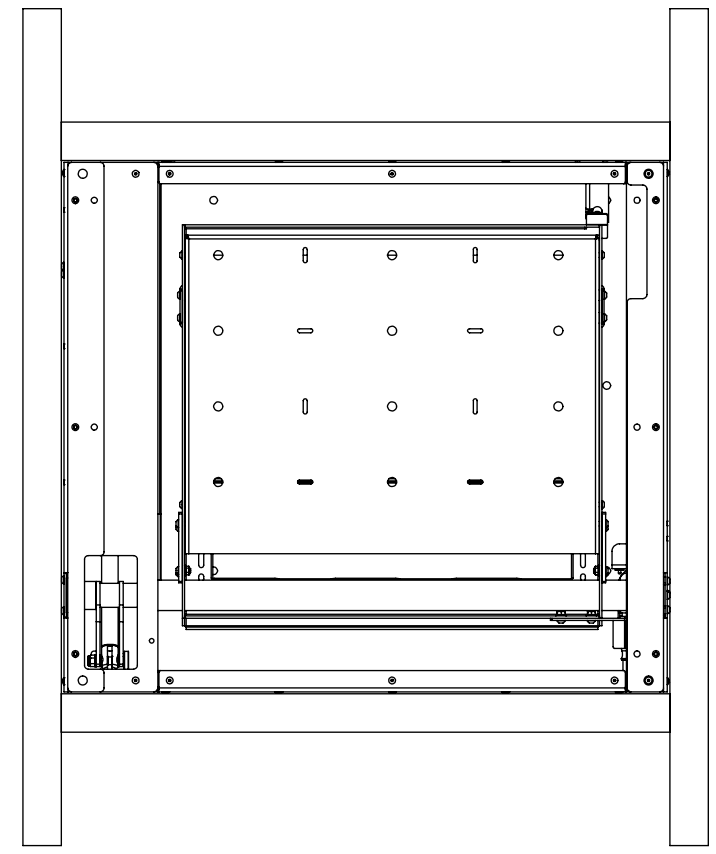
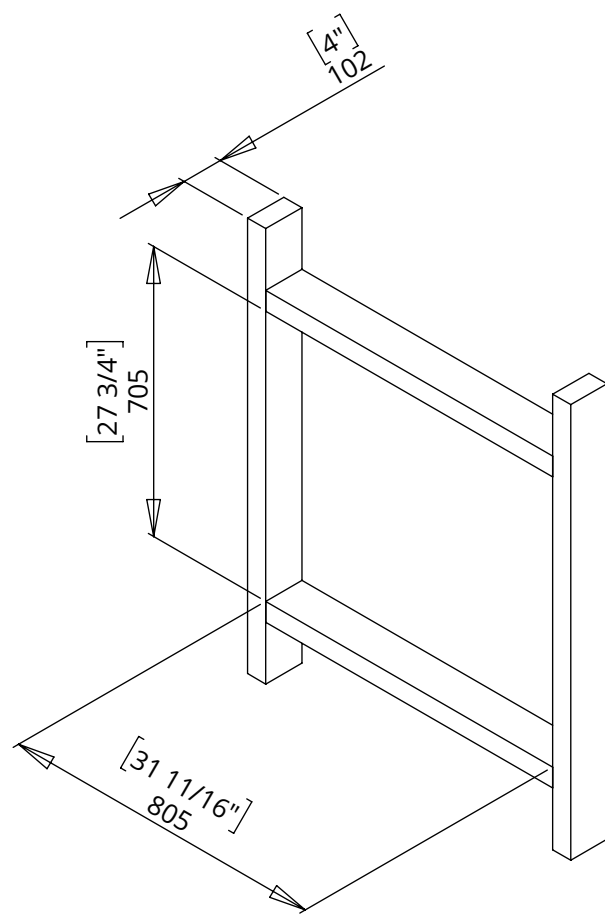
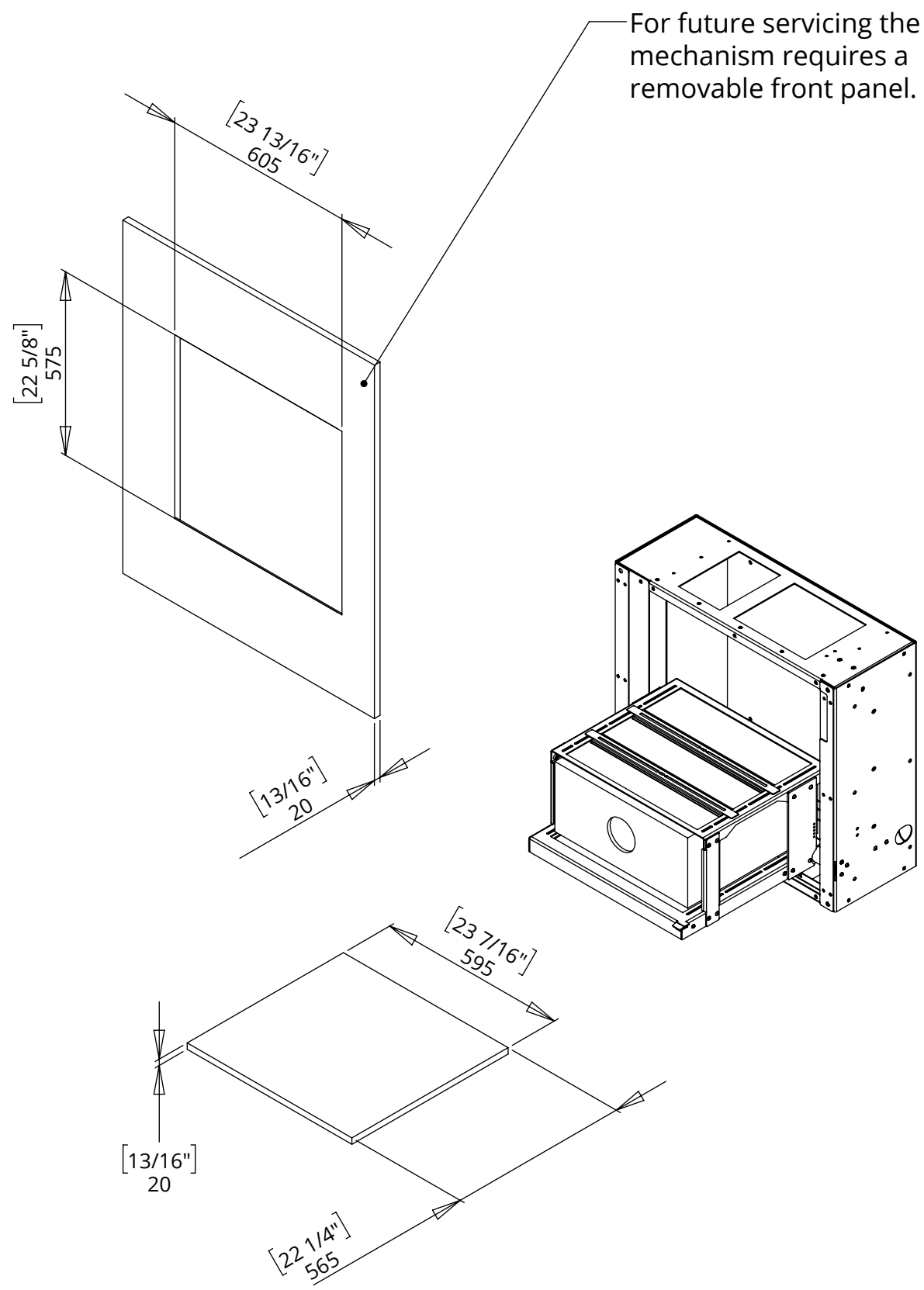
Mechanism is supplied with hardware to allow projector to be mounted in an inverted configuration.

This can be removed and projector can be mounted to the base of the hinging panel.

PH2

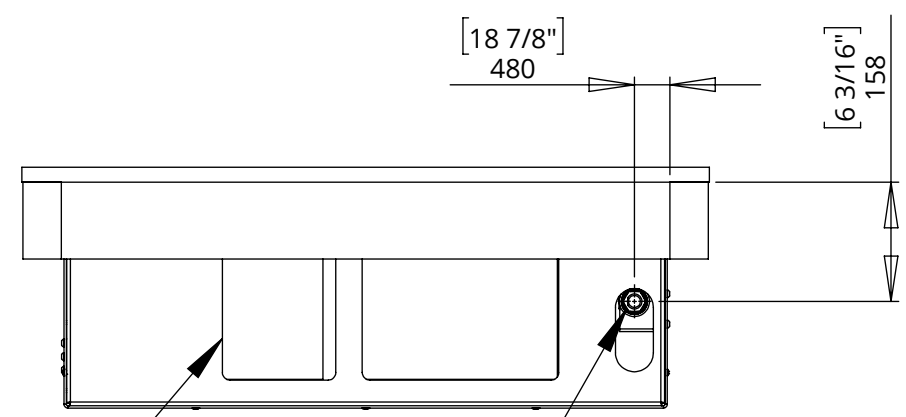
PROJECTOR HINGE MECHANISM

CABINET DESIGN



These apertures allow flexibility for projector cable entry.

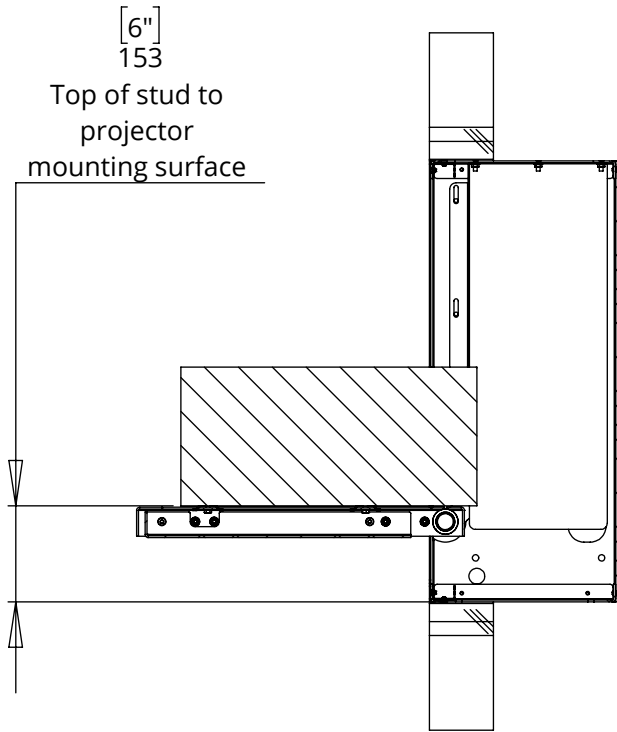
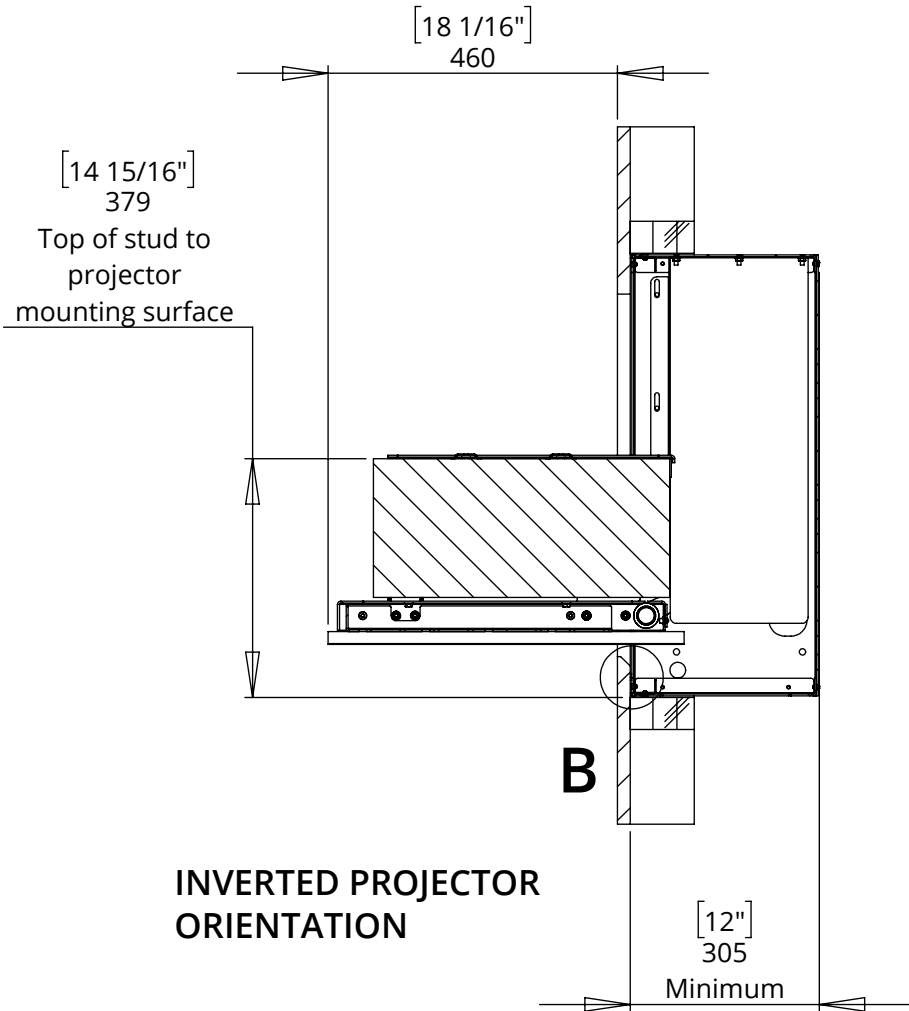
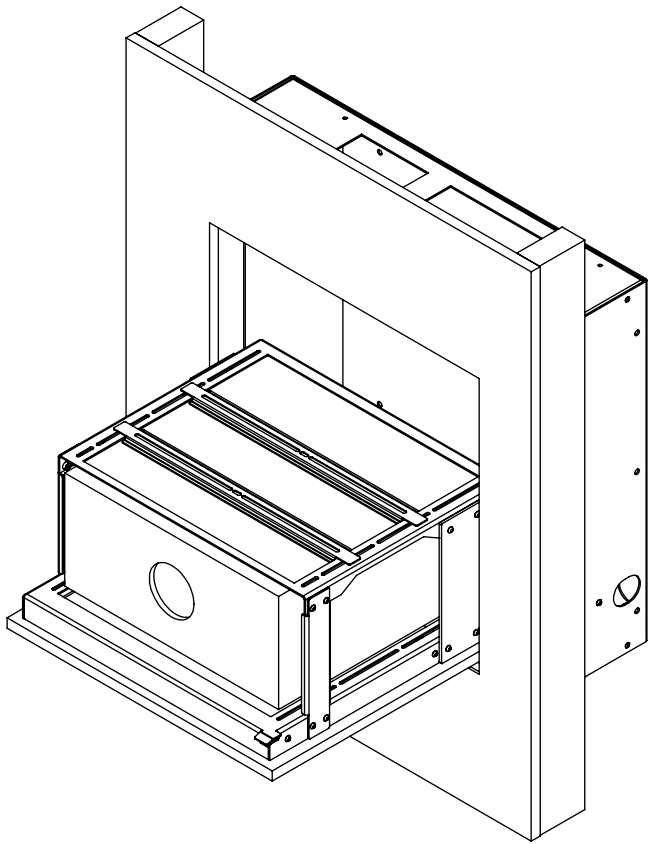
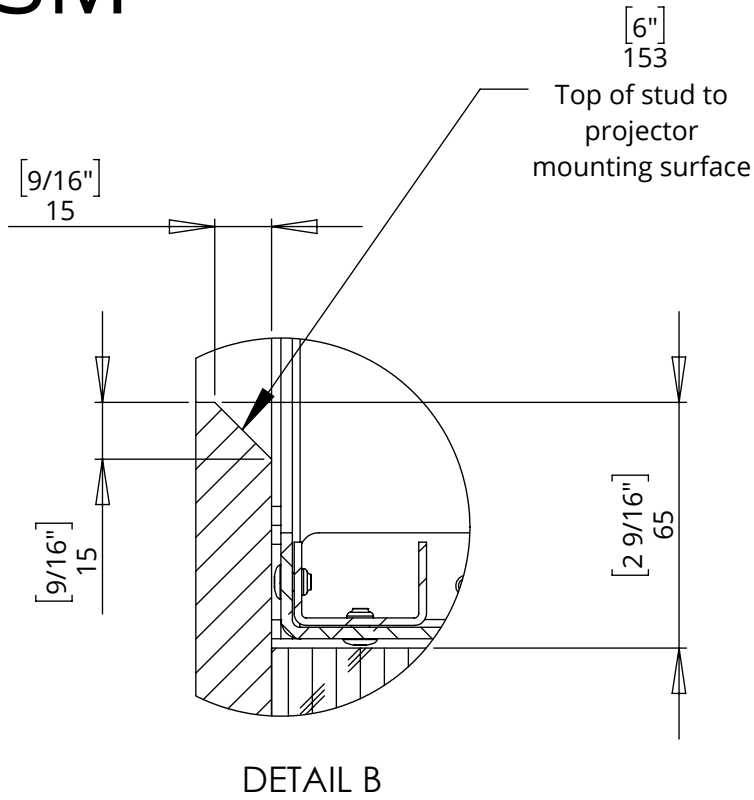
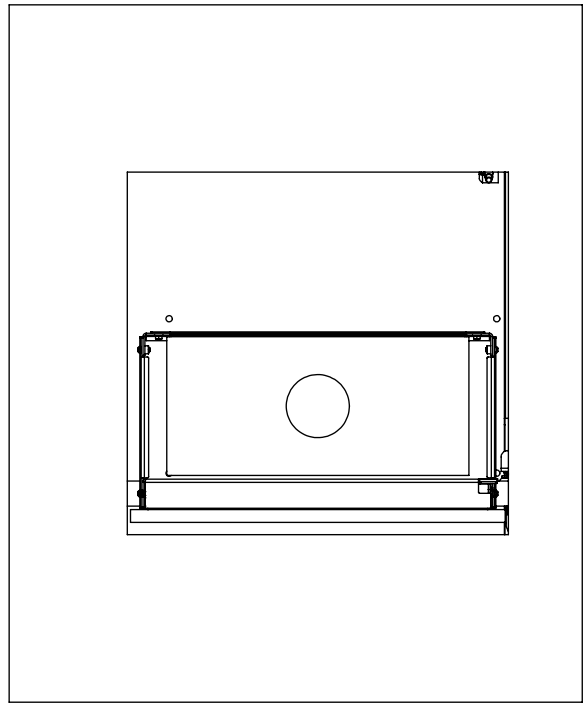
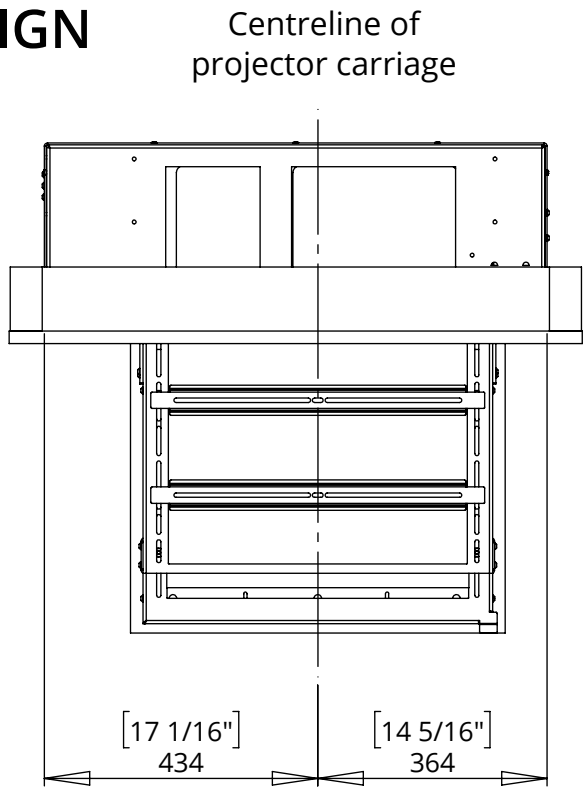
Mechanism wiring loom exits out the bottom.



PH2

PROJECTOR HINGE MECHANISM

CABINET DESIGN



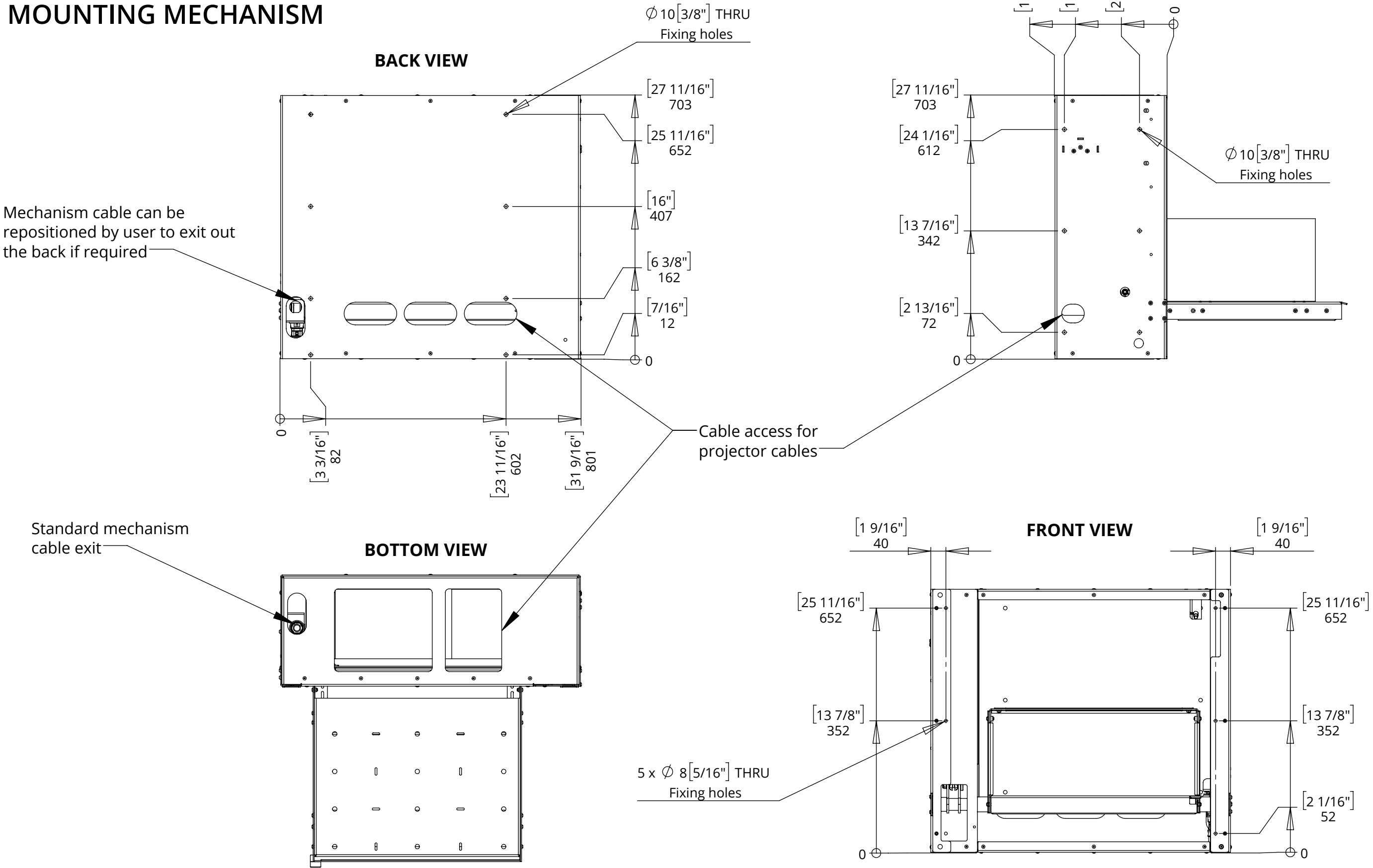
PH2

PROJECTOR HINGE MECHANISM



future automation

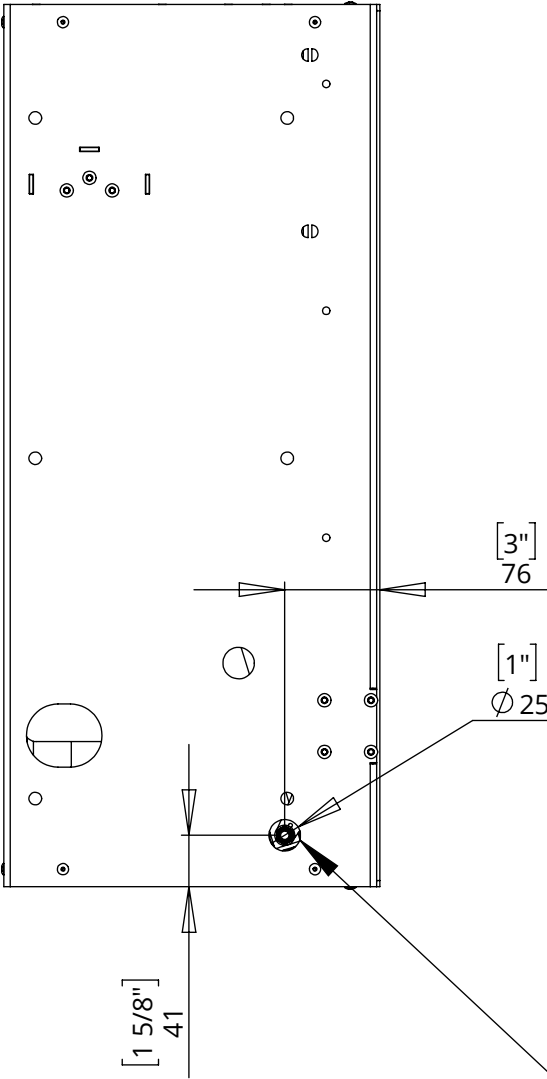
MOUNTING MECHANISM



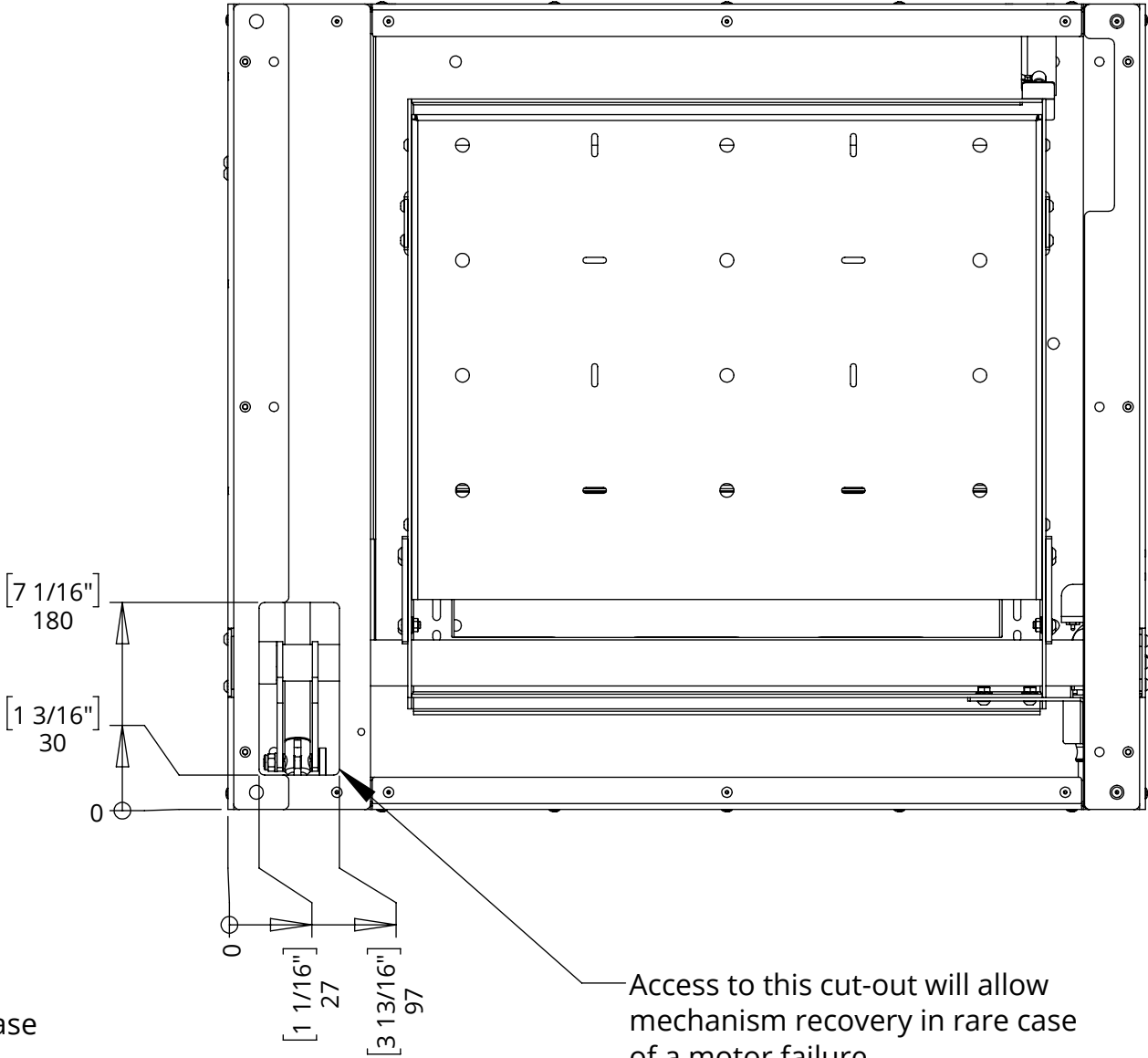
PH2

PROJECTOR HINGE MECHANISM

MECHANISM RECOVERY



Access to this hole will allow mechanism recovery in rare case of a motor failure.

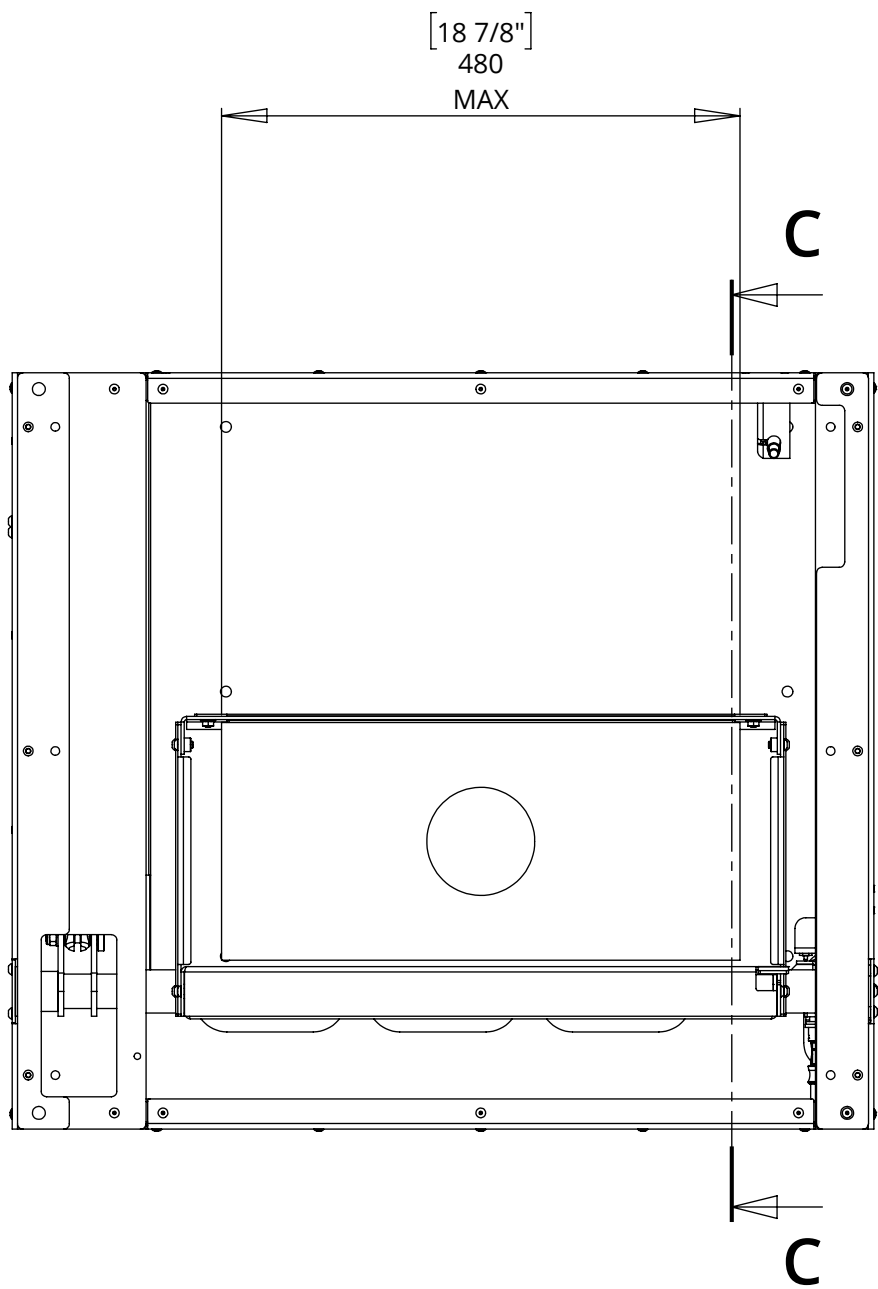


Access to this cut-out will allow mechanism recovery in rare case of a motor failure.

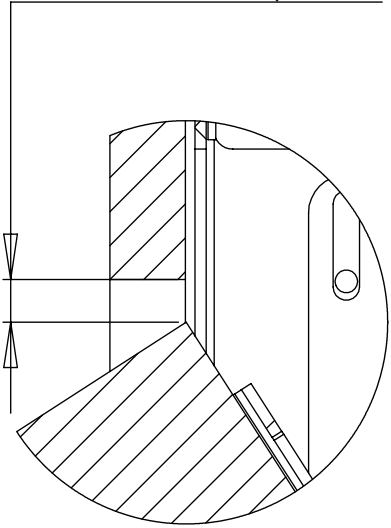
PH2

PROJECTOR HINGE MECHANISM

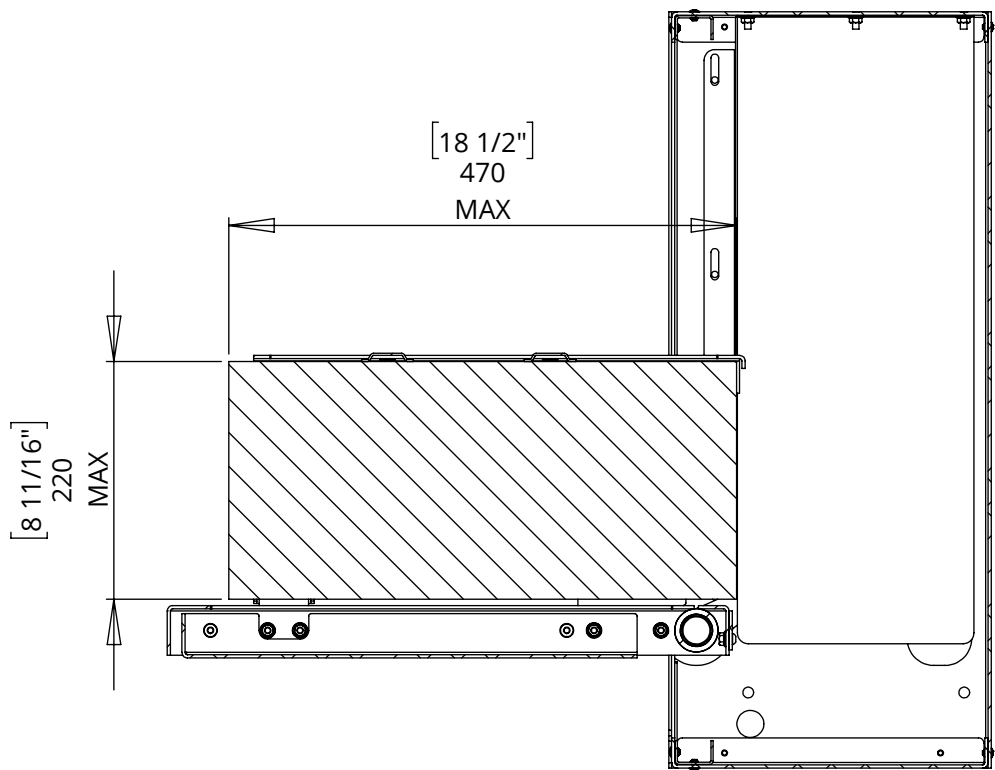
MAXIMUM PROJECTOR SIZE



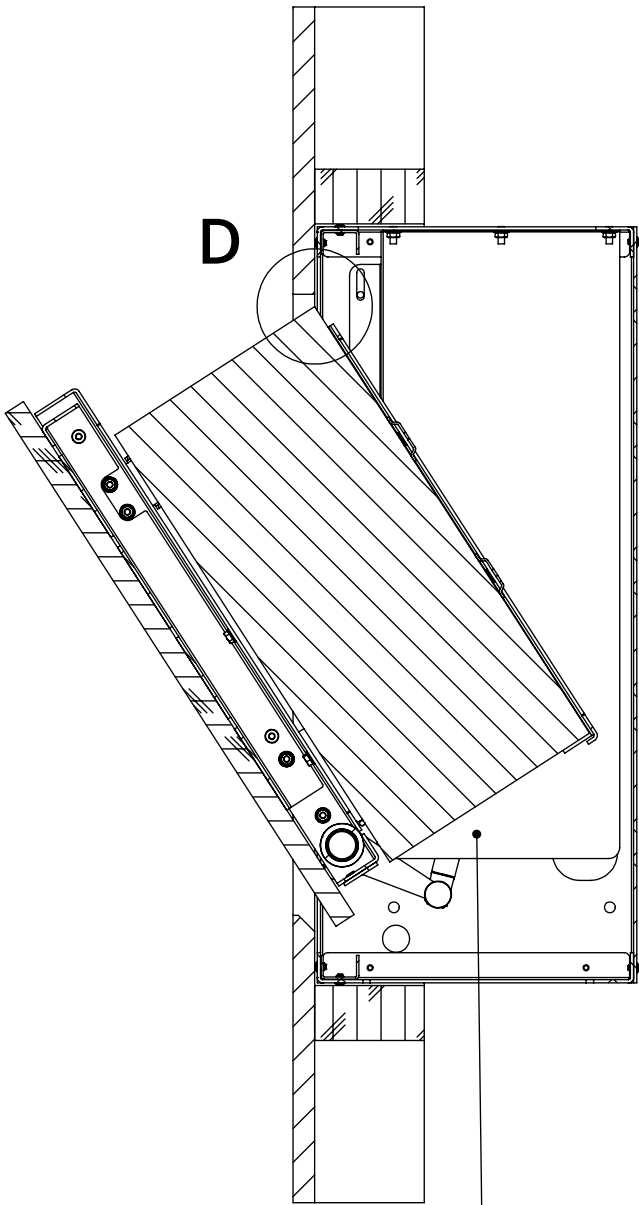
Take care that all parts of the projector setup will clear the front panel.



DETAIL D



SECTION C-C

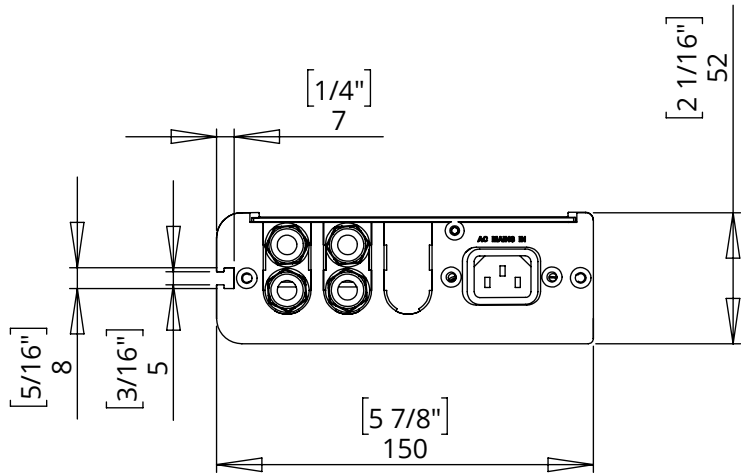
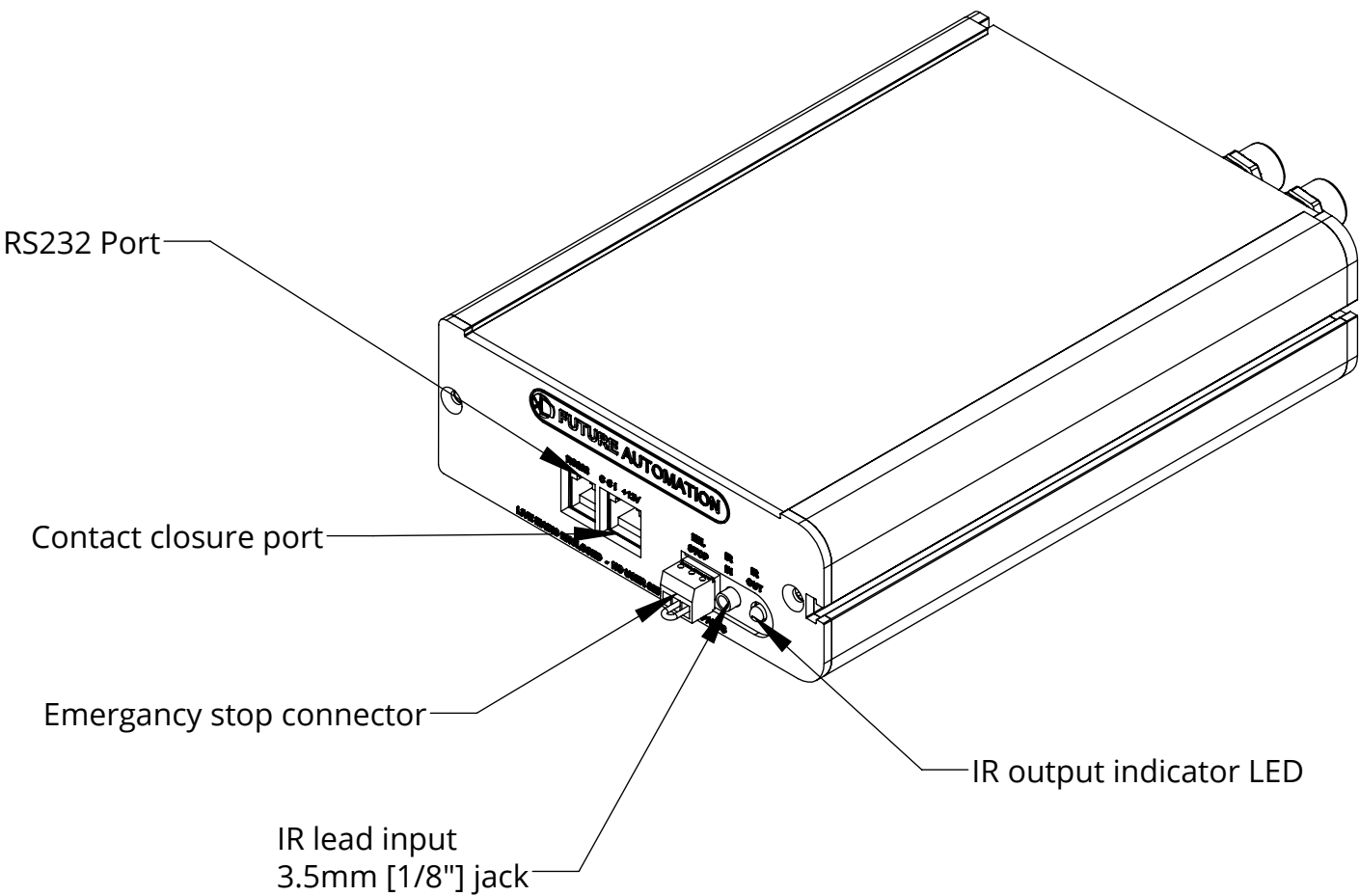
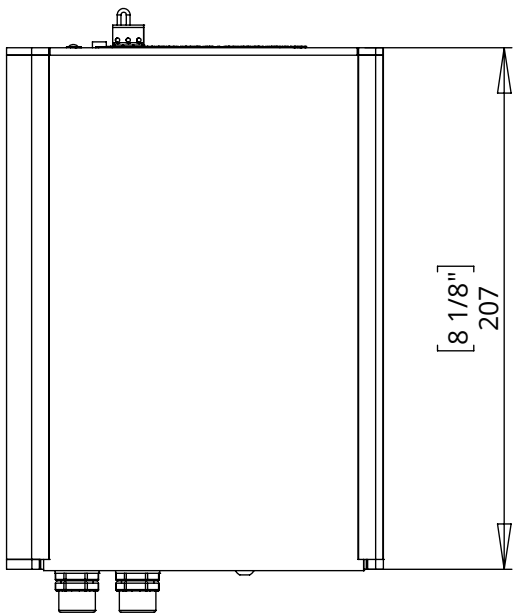


IMPORTANT: The maximum projector dimensions shown do not account for cables or connectors.

Make sure there is enough room for cables including cable bend radius.

PH2

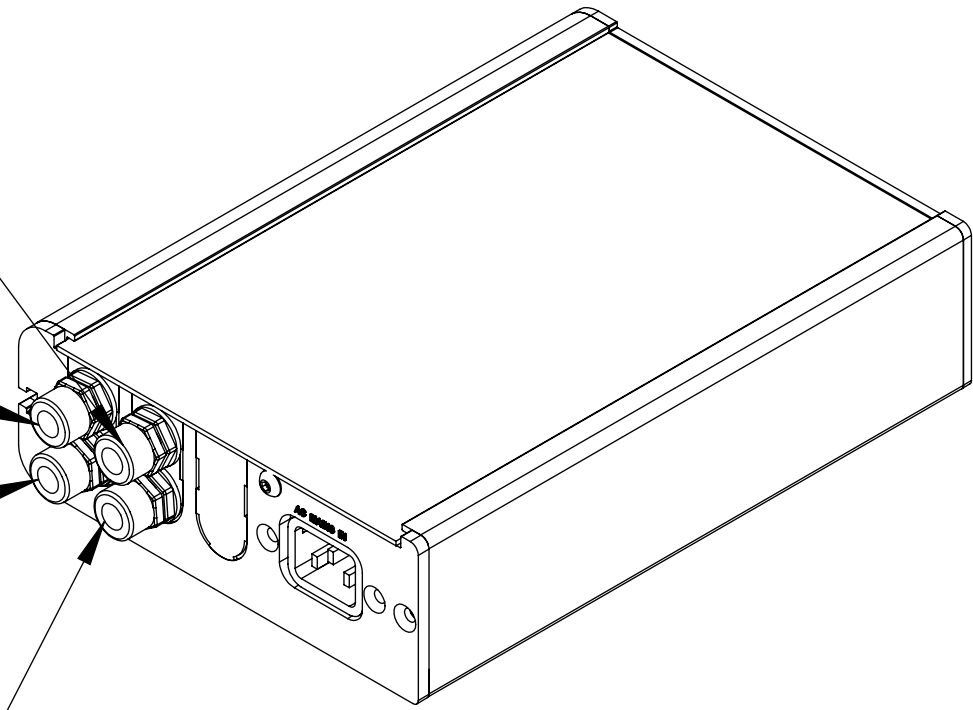
PROJECTOR HINGE MECHANISM



2 CORE CABLE
MOTOR POWER
7mm [1/4"] dia.
EU SPEC: 0.75mm²
US SPEC: 18AWG

6 CORE CABLE
CATCH SWITCHES AND
MOTOR CONTROL
7mm [1/4"] dia.
EU SPEC: 0.5mm²
US SPEC: 20AWG

6 CORE CABLE
CATCH SWITCHES AND
MOTOR CONTROL
7mm [1/4"] dia.
EU SPEC: 0.5mm²
US SPEC: 20AWG



NOTES

CABLE LOOM LENGTH SUPPLIED AT APPROX.. 3m [118"]

CONTOL BOX MUST BE LOCATED IN AN EASILY ACCESSIBLE LOCATION