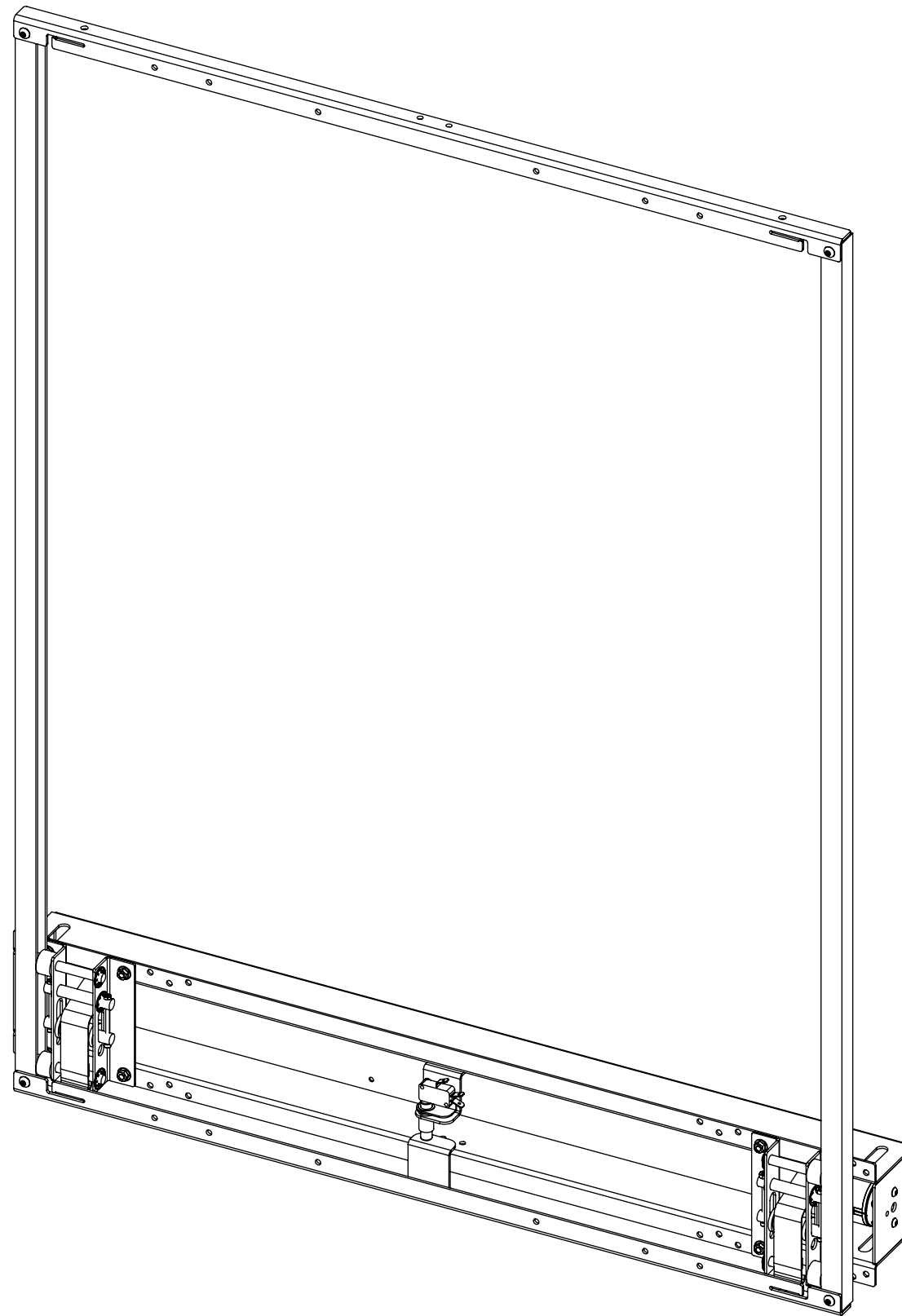


PIC-3

PICTURE LIFT MECHANISM



future automation



PIC-3

PICTURE LIFT MECHANISM



future automation

SPECIFICATION	MEASUREMENTS
Product Dimensions (H x W x D)	1018mm (40 1/16") x 797mm (31 3/8") x 102mm (4")
Maximum Weight Capacity	10Kg (22lb)
Maximum Travel	860mm (33 7/8")
Product Weight	7Kg (15lb)
Packaging Dimensions	980mm (38 9/16") x 300mm (11 13/16") x 210mm (8 1/4")
Shipping Weight	11Kg (24lb)
Movement Type	Motorised
Power Supply Required	110V - 240V AC
Power Consumption Max.	110W
Power Consumption Standby	3W
Control Options	IR Remote, RS232, Contact Closure
Product Options / Features	Specific B&O and Loewe mounts / adapters, Custom RAL paint finishes, Marine suitable version
Package Contents	Mechanism, IR remote control
Marine Suitable	No

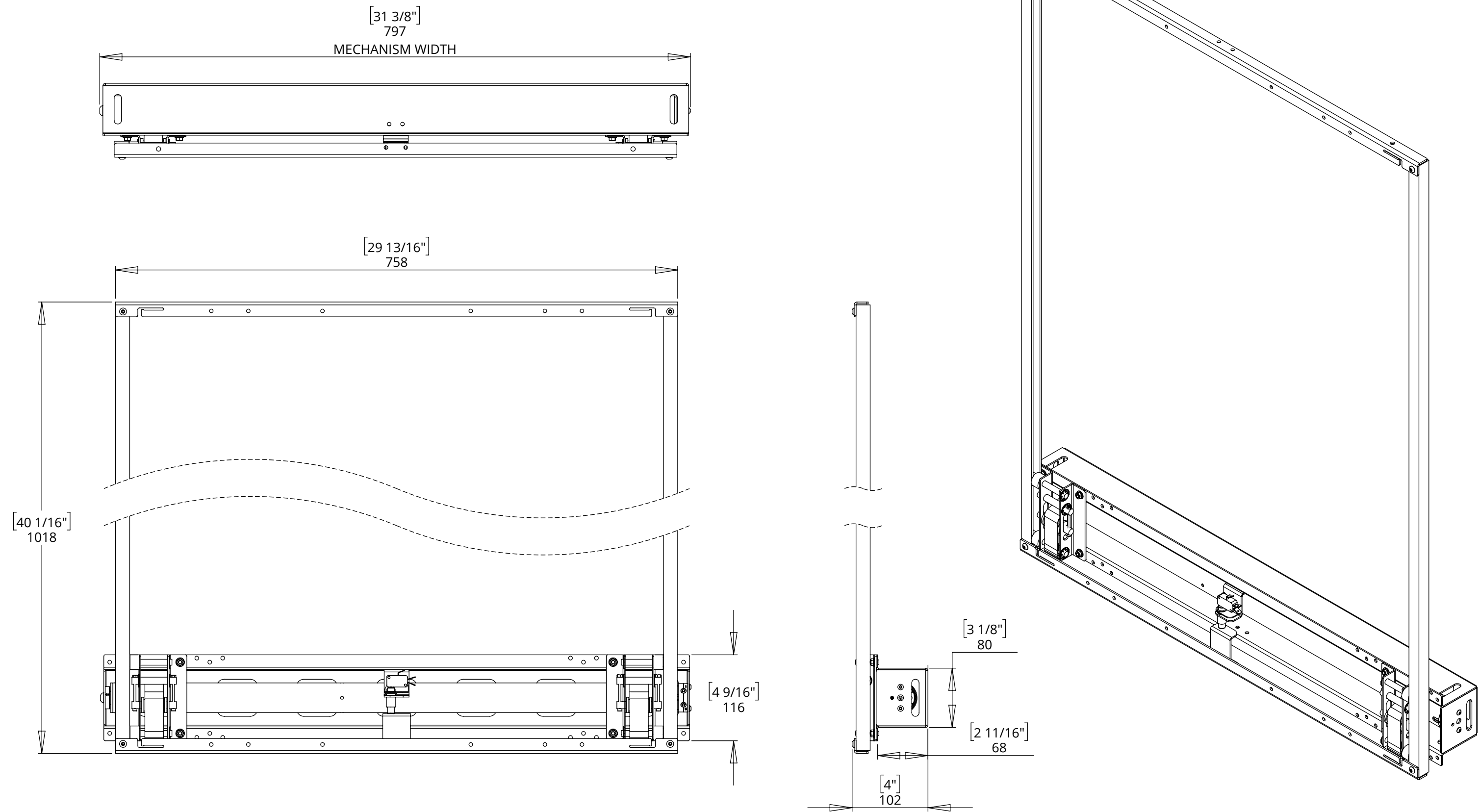
PIC-3

PICTURE LIFT MECHANISM



future automation

GENERAL DIMENSIONS



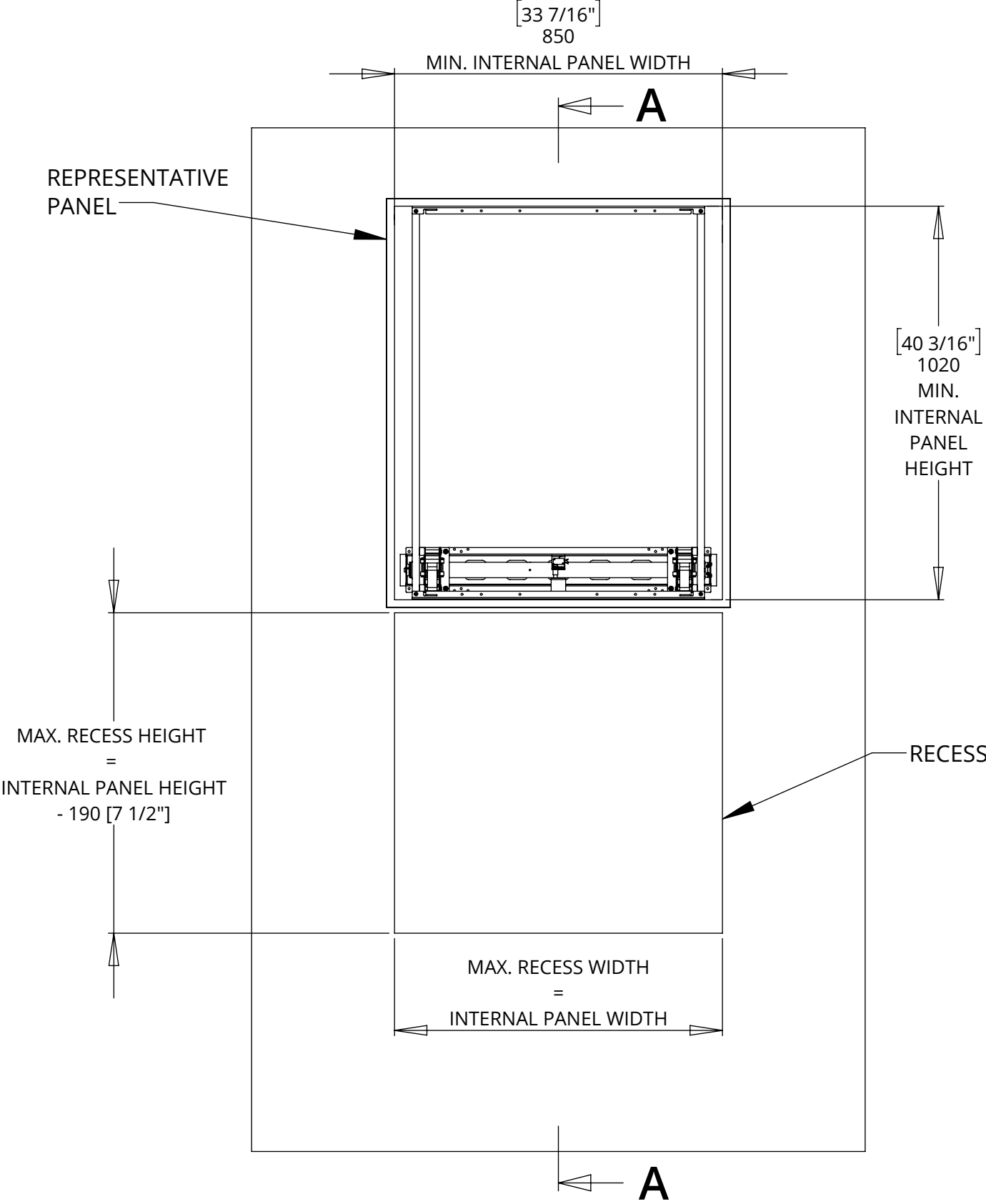
PIC-3

PICTURE LIFT MECHANISM

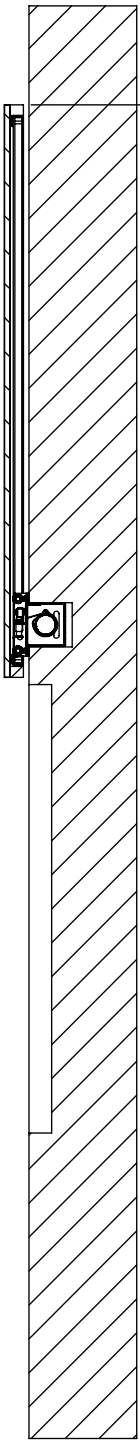


future automation

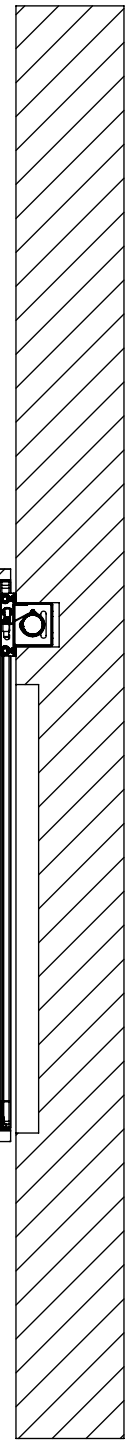
MECHANISM DETAILS



UP POSITION



DOWN POSITION



$[33 \frac{13}{16}"]$
860
MAX.
TRAVEL

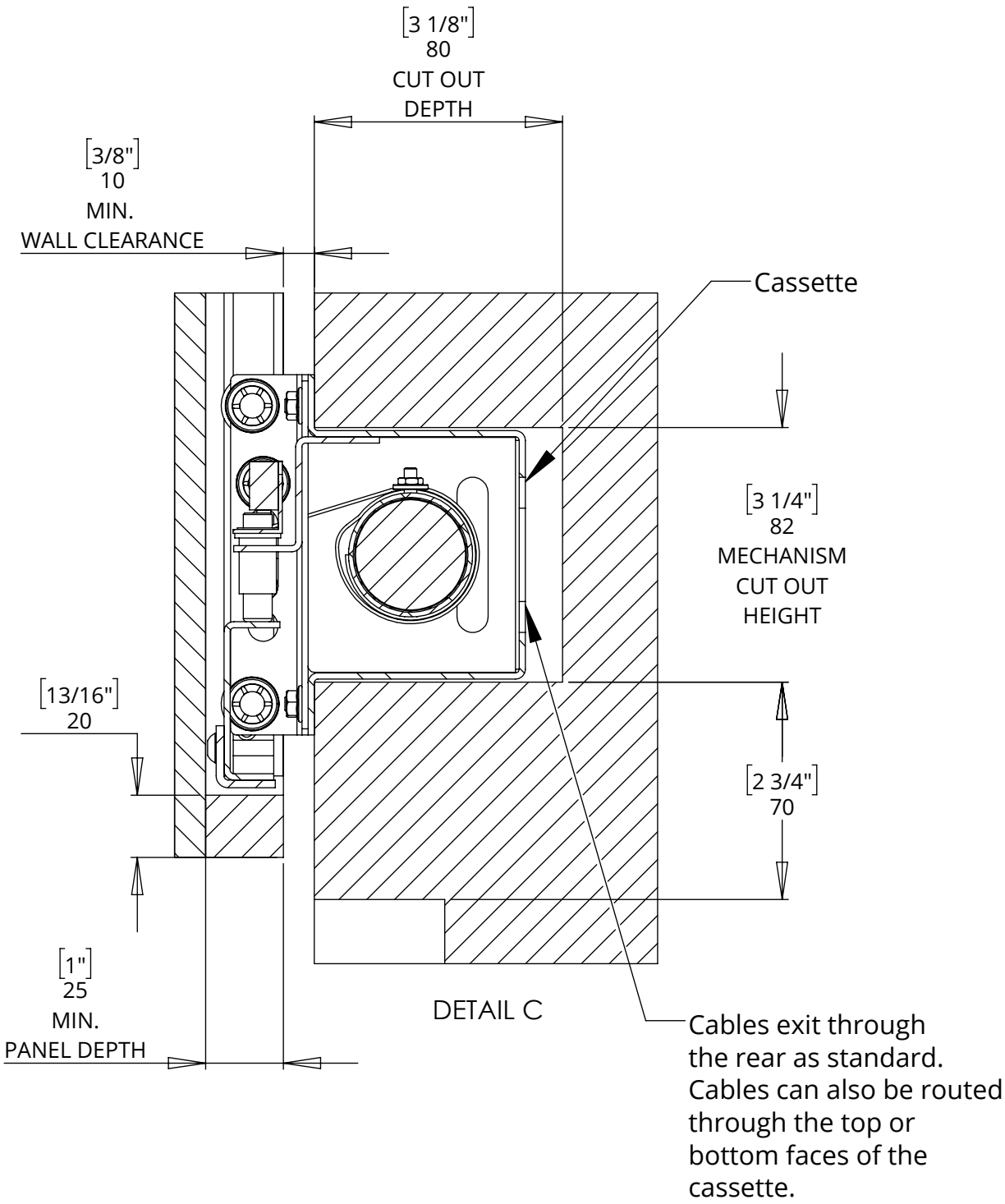
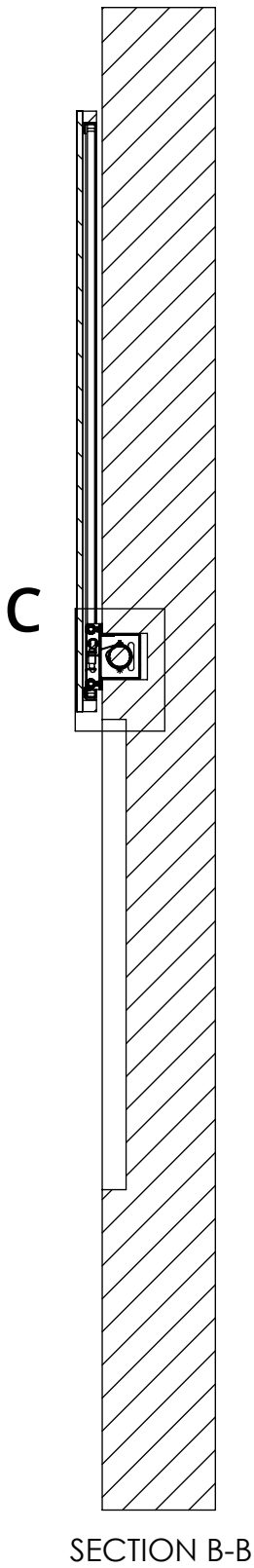
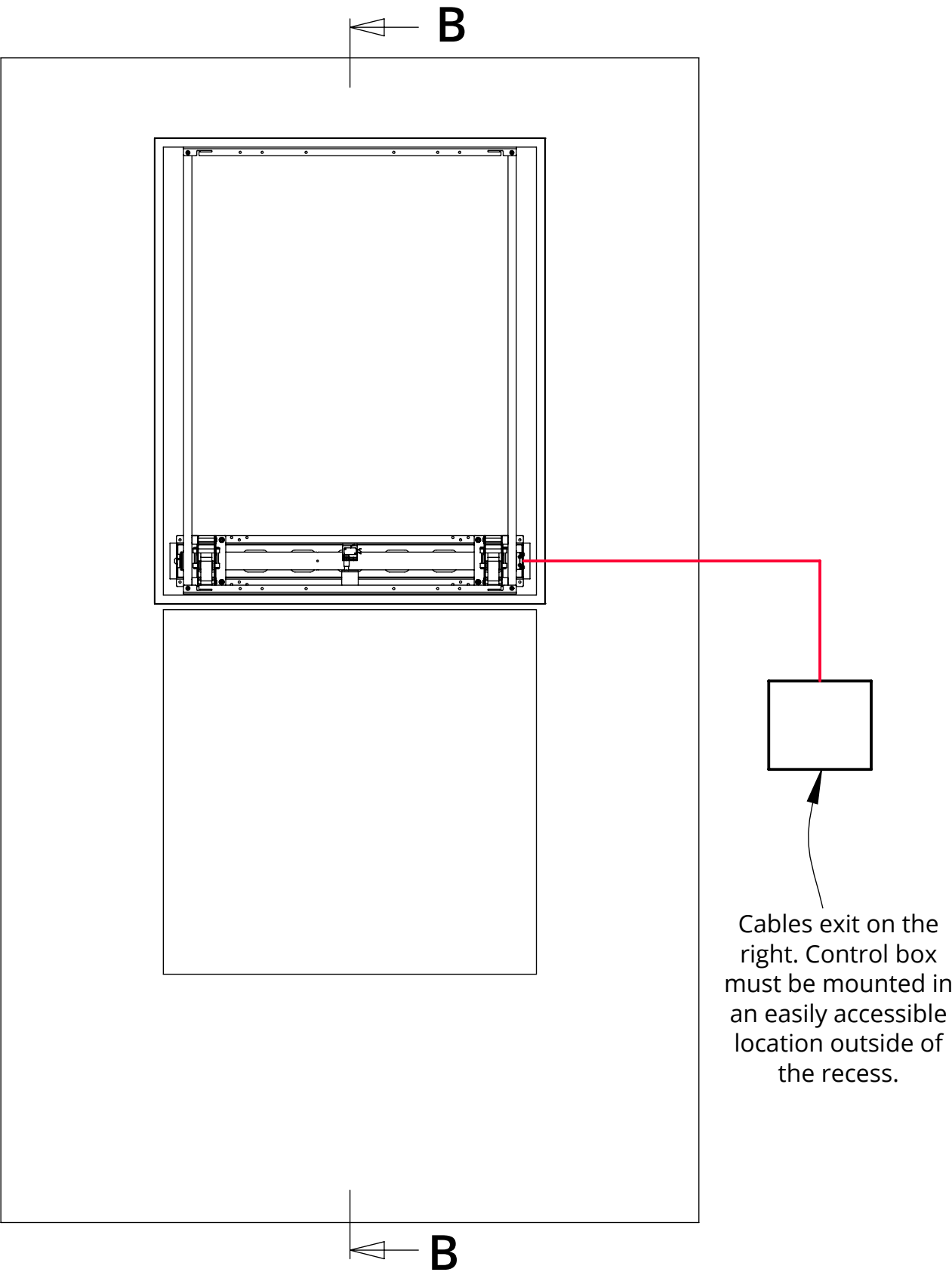
TECHNICAL SHEET

ISSUE 007
SHEET 4

PIC-3

PICTURE LIFT MECHANISM

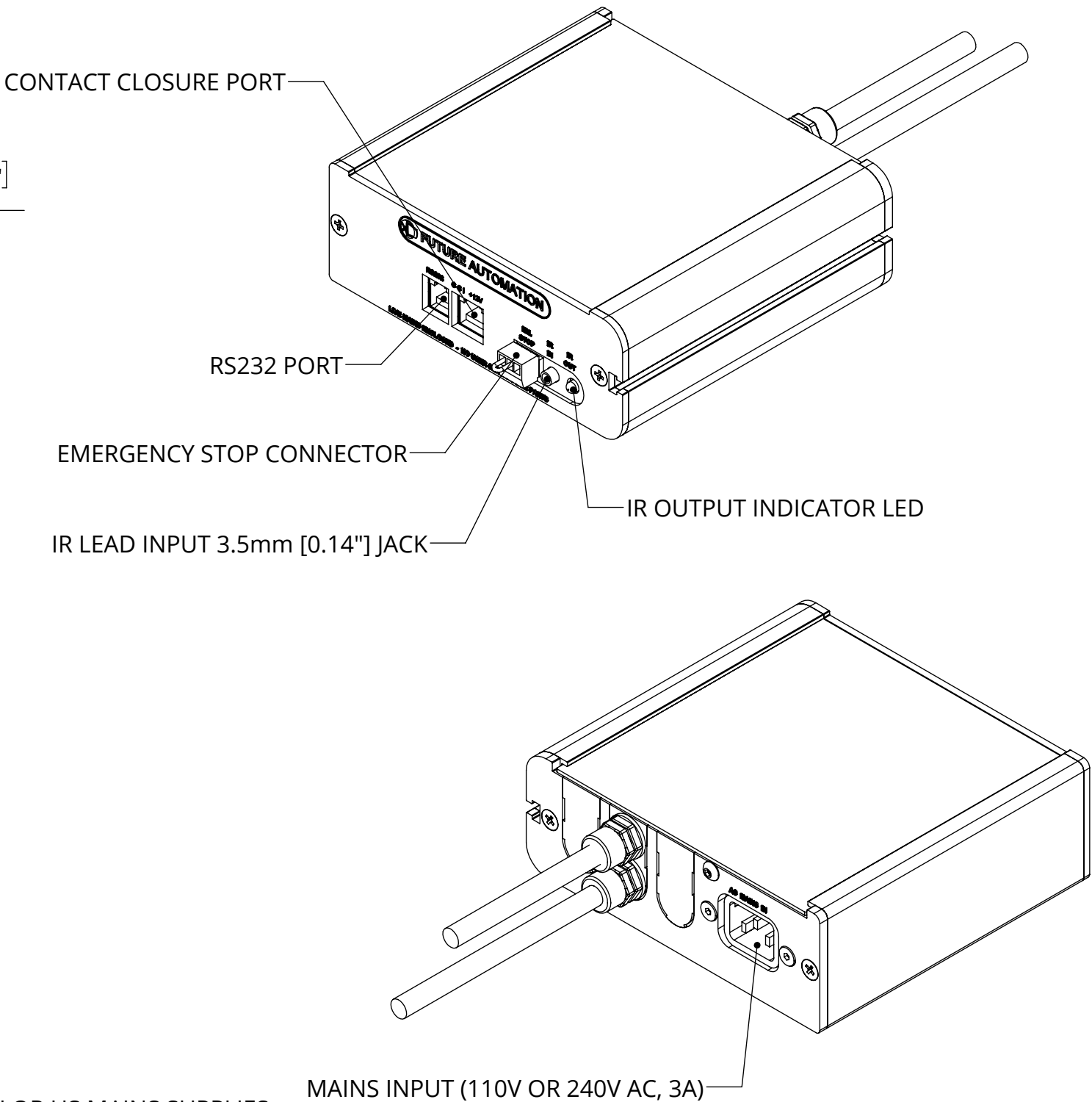
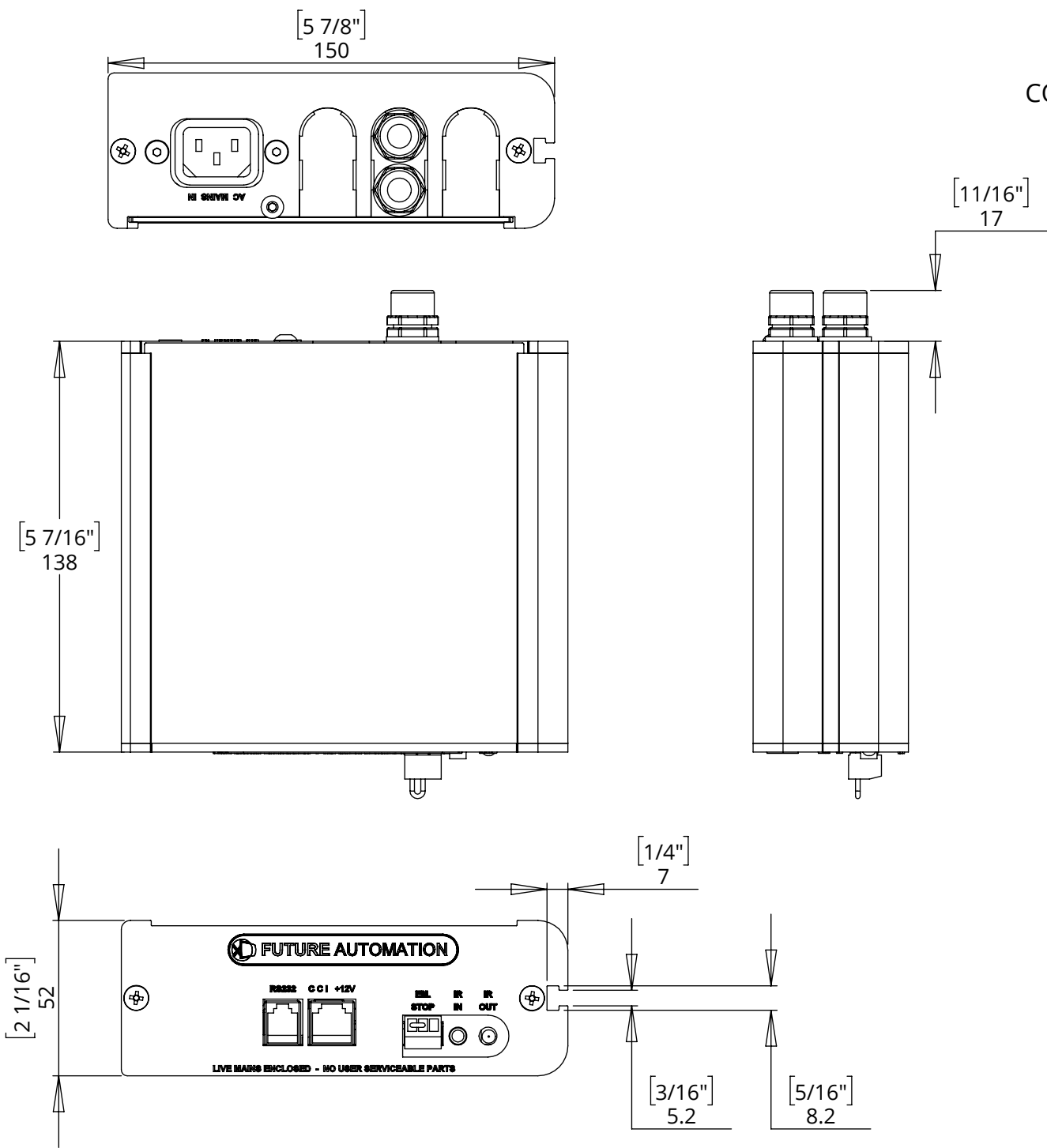
MOUNTING DETAILS



PIC-3

PICTURE LIFT MECHANISM

CONTROL BOX



- NOTES**
- POWER SUPPLY UNIT (PSU) WILL ALLOW 110V OR 240V AC INPUT. THE SAME PSU IS USED FOR EU OR US MAINS SUPPLIES.
 - OTHER THAN CONTROL CABLES, ALL CABLES TERMINATE AT CONTROL BOARD VIA STANDARD PHOENIX CONNECTORS.
 - CABLE LOOM LENGTH SUPPLIED AT APPROX. 2m [78 3/4"]. LOOM CAN BE EXTENDED UP TO MAXIMUM OF APPROX. 10m [400"].
 - MINIMUM CABLE BEND RADIUS 25mm [1"].