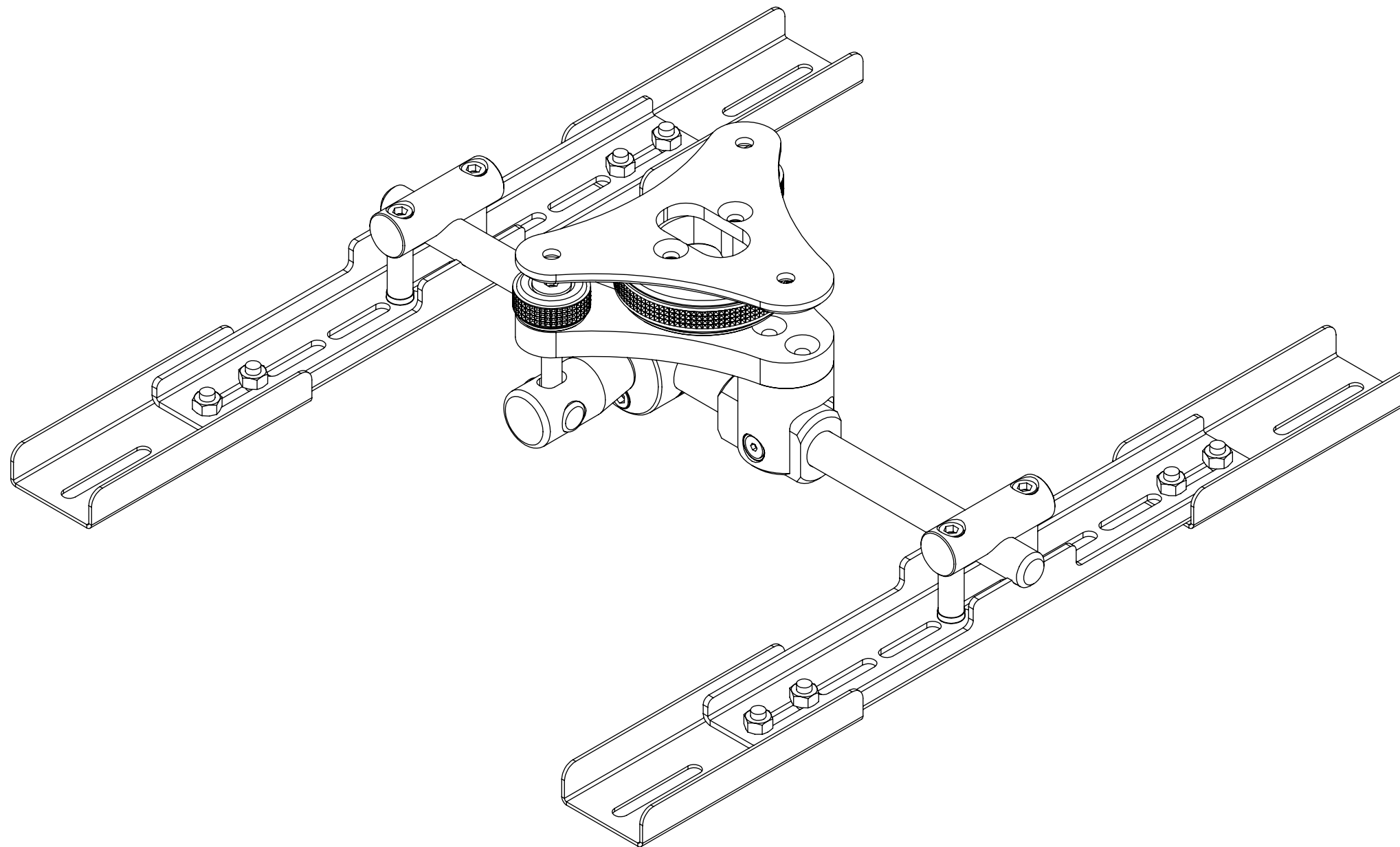


PM

PROJECTOR MOUNT SYSTEM



future automation



PM

PROJECTOR MOUNT SYSTEM

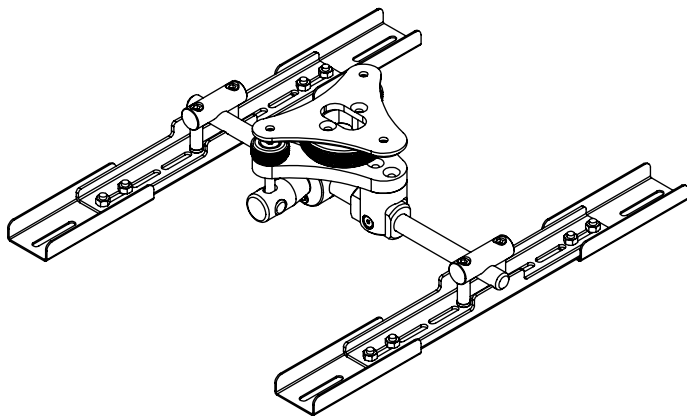


future automation

SPECIFICATION	MEASUREMENTS
Product Dimensions	350 x 270 x 100mm (13.4 x 10.6 x 3.9")
Maximum Weight Capacity	35kg (77lbs)
Depth From Ceiling	100mm (3.9")
Product Weight	2.5Kg (5.5lb)
Packaging Dimensions	400 x 320 x 150mm (15.74 x 12.59 x 5.90")
Shipping Weight	3kg (7lbs)
Maximum Rotation	360°
Movement Type	Manual
Adjustments	Pitch, Roll and Yaw are adjustable
Mounting Options	Flush Surface, Pole, Telescopic Pole, NPT Pipe
Product Options / Features	Projector specific mounts / adapters, Custom RAL paint finishes
Package Contents	Mechanism, Extension Plates
Marine Suitable	No

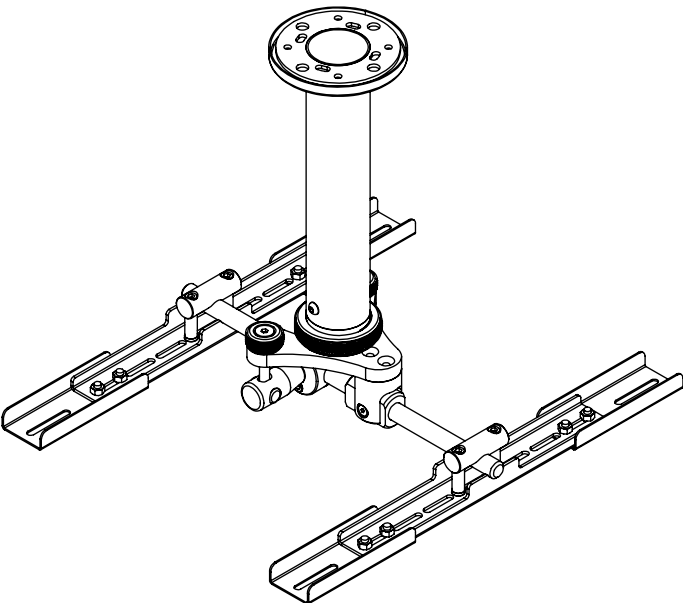
PM PROJECTOR MOUNT SYSTEM

CEILING FIXTURE OPTIONS



SURFACE MOUNTED

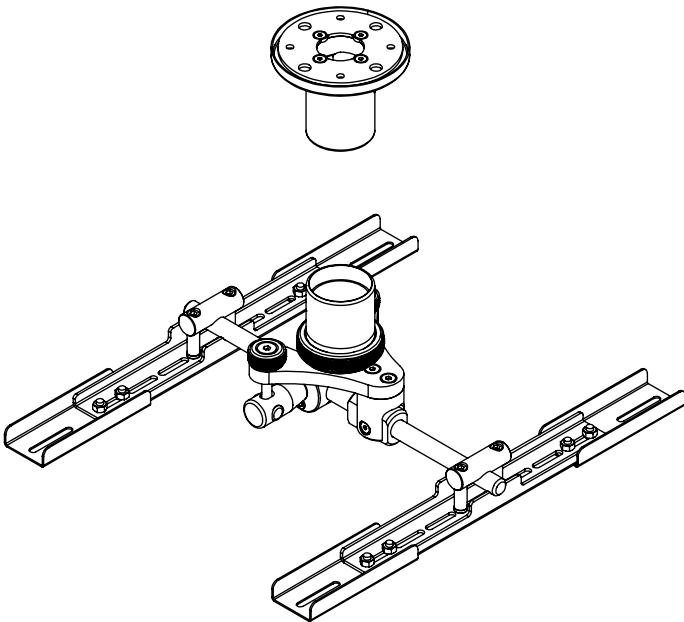
Leaves projector 100mm [4"] from ceiling for a neat stylish look.



POLE MOUNTED

Available in different pole length versions, custom length poles can be designed.

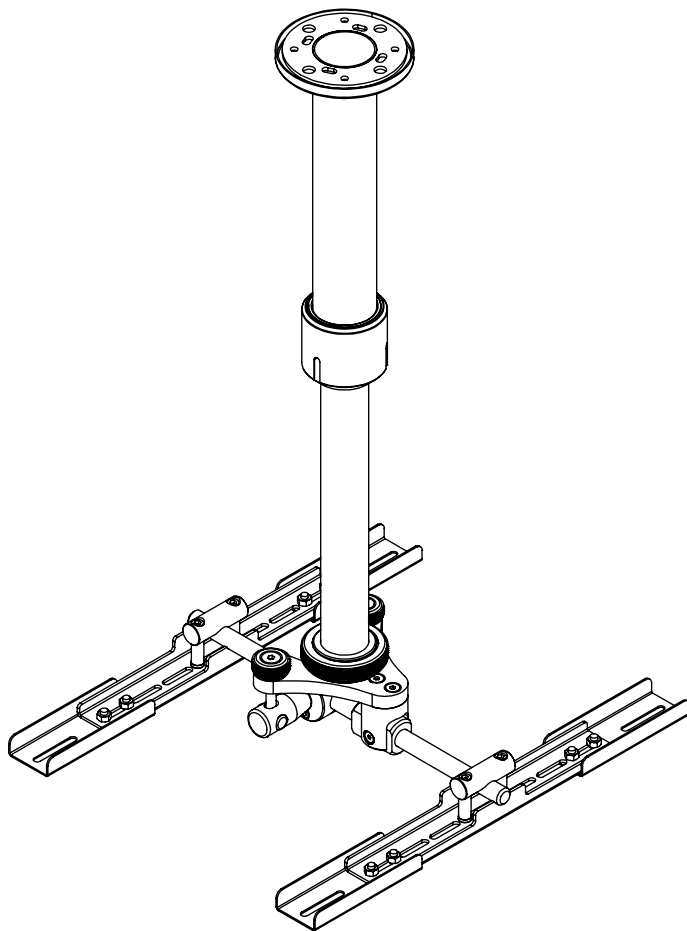
Cables exit out of top of 2" diameter stainless steel pole.



NPT PIPE MOUNTED

Couplings for standard NPT pipe (pipe not supplied).

Cables exit out of top of NPT ceiling flange coupling or out of side of coupling if required.



TELESCOPIC POLE MOUNTED

Two telescopic poles lengths available:

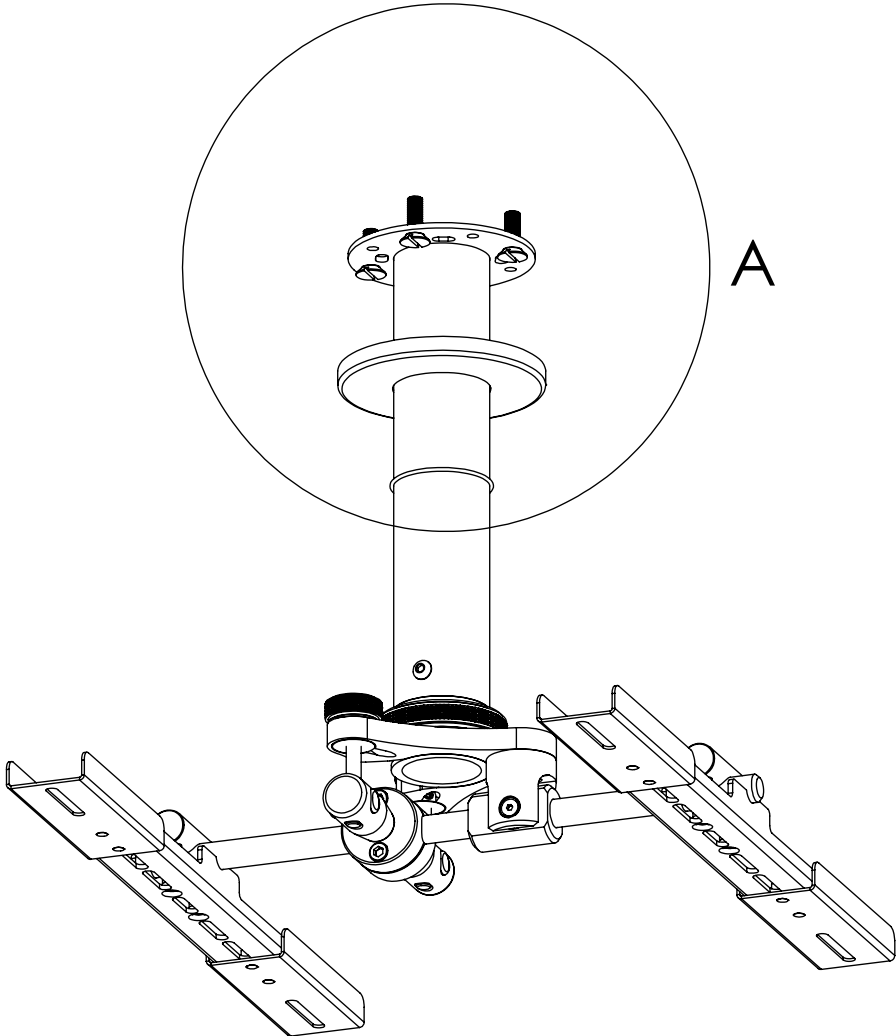
PM-TP4-7:
400mm [15.75"] long pole that telescopes down to 700mm [27.5"].

PM-TP7-13:
700mm [27.5"] long pole that telescopes down to 1300mm [51.2"].

Cables exit out of top of 2" diameter stainless steel pole.

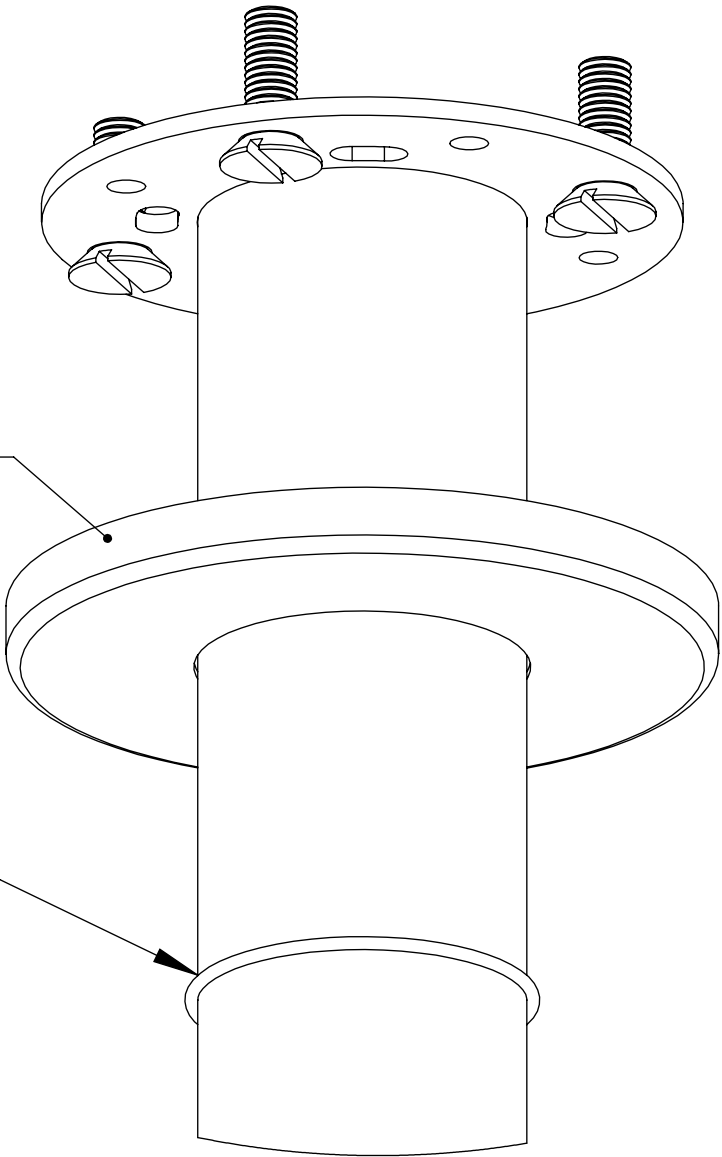
PM PROJECTOR MOUNT SYSTEM

POLE COVER ASSEMBLY



Stainless steel cover slides
over pole to conceal fixings

Rubber O ring to
hold cover in place



DETAIL A

PM PROJECTOR MOUNT SYSTEM

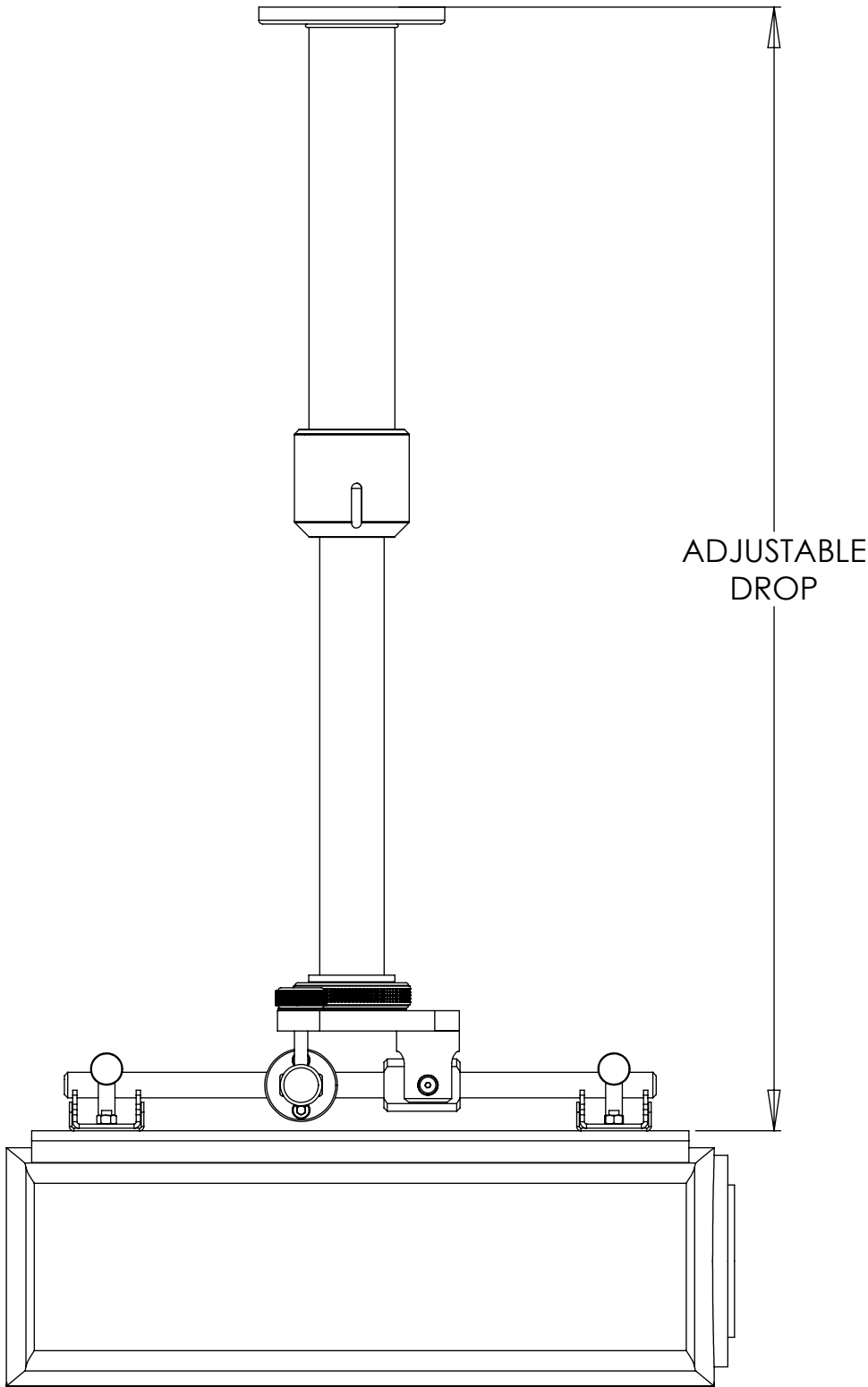
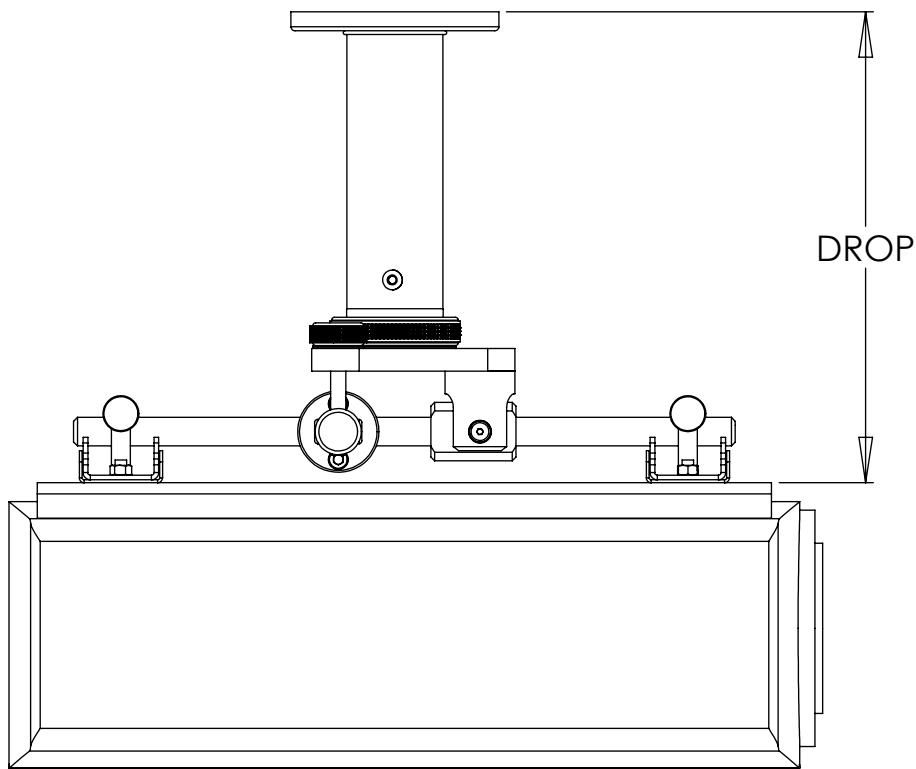


future automation

ADDITIONAL DROP

The standard PM system comes with a flush ceiling mount.

However, if you require the PM system to be lowered on a stainless steel pole, you can specify a fixed length pole.



Available Drop Sizes:

250 (250mm [9.8"] - Fixed Pole Length)

500 (500mm [19.7"] - Fixed Pole Length)

750 (750mm [29.5"] - Fixed Pole Length)

PM-TP4-7 (400mm to 700mm [15.7" to 27.6"]
Telescopic Pole)

PM-TP7-13 (700mm to 1300mm [27.6" to 51.2"]
Telescopic Pole)

PM

PROJECTOR MOUNT SYSTEM

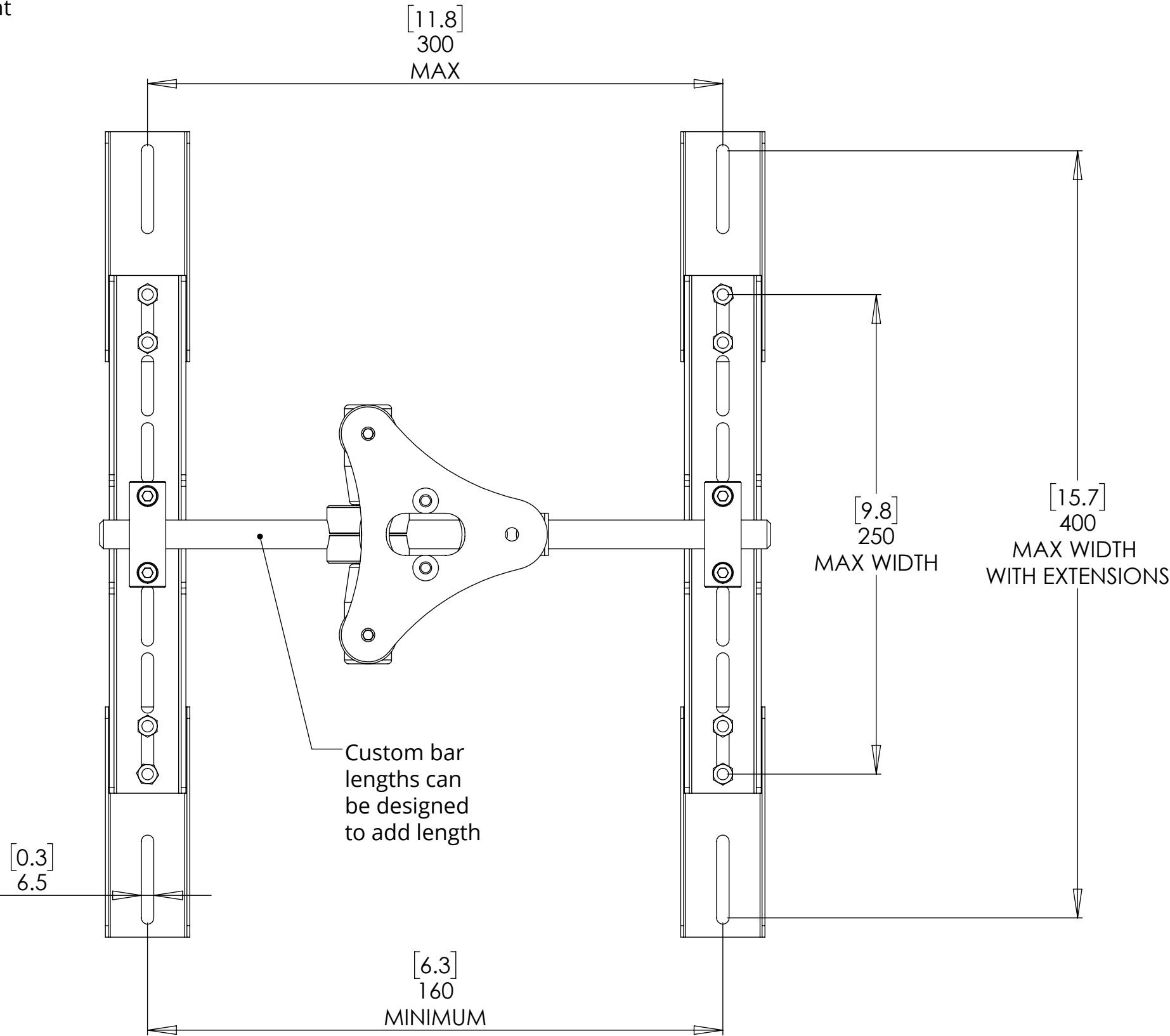


future automation

PROJECTOR MOUNTING DIMENSIONS

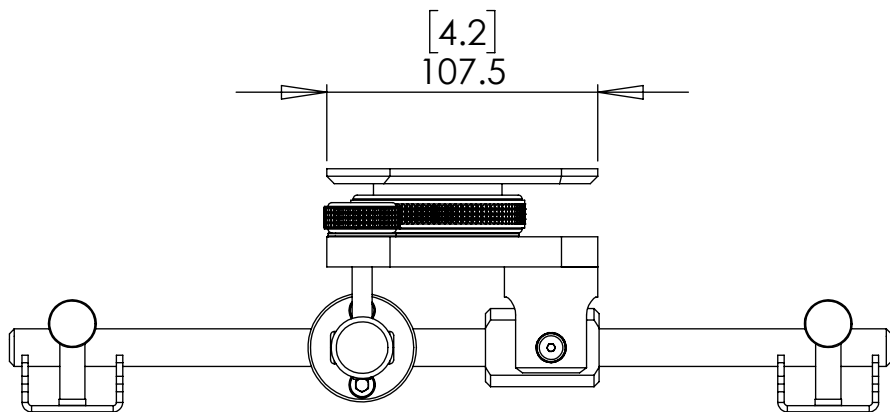
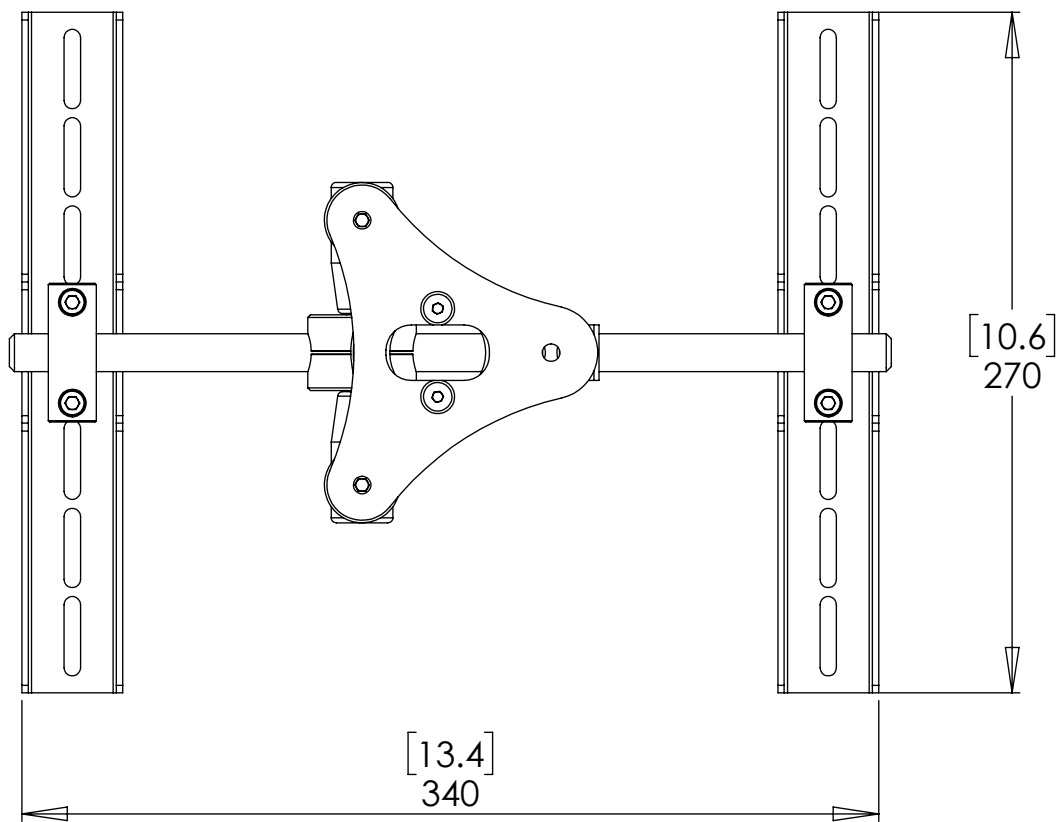
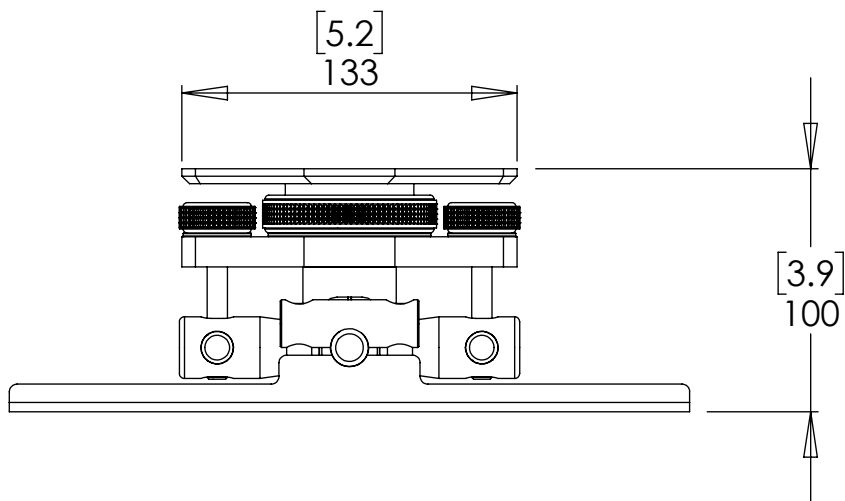
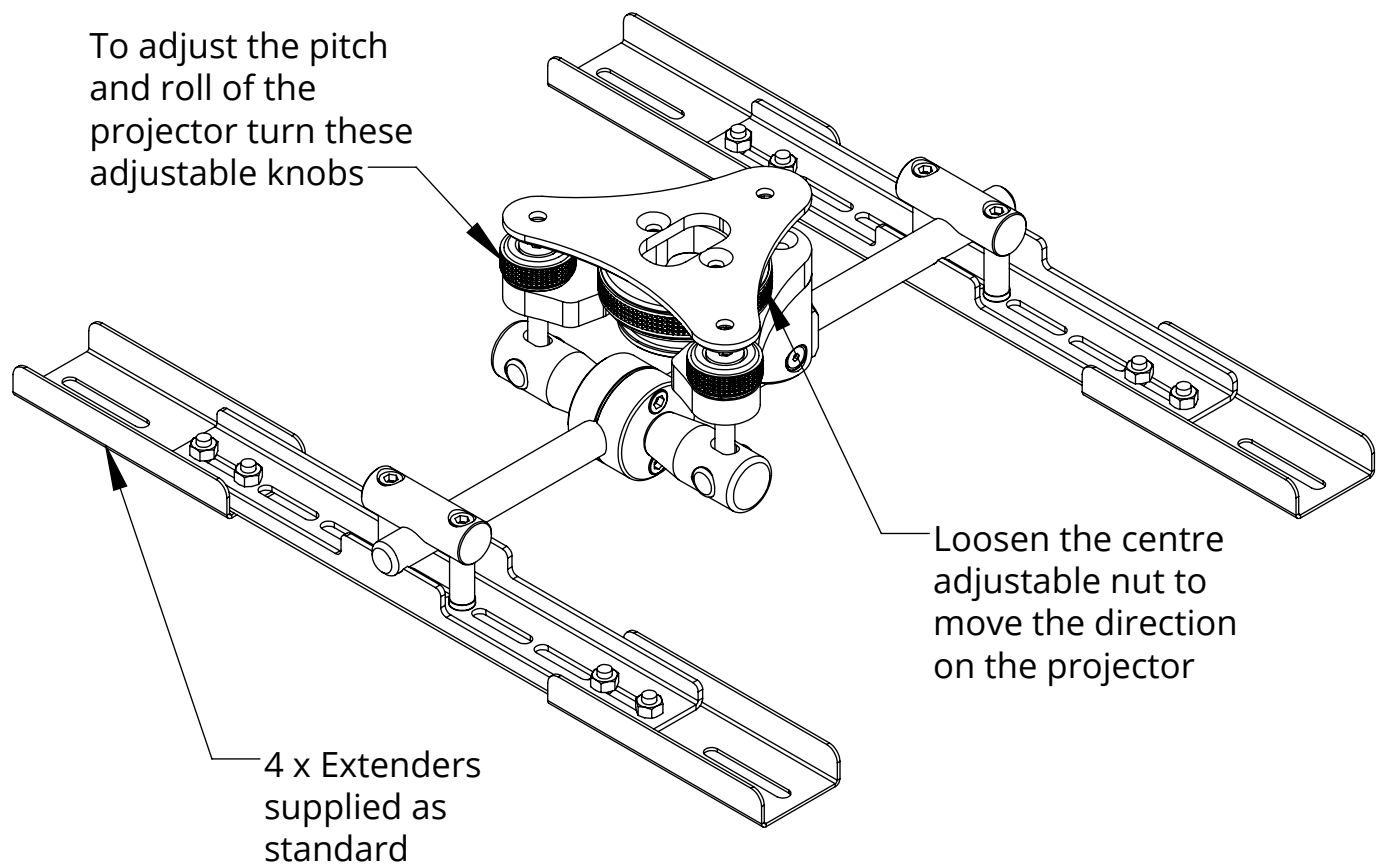
This mount set up allows for lots of different mount patterns on projectors.

If a projector has an irregular mount pattern, custom adapter plates can be designed.



PM PROJECTOR MOUNT SYSTEM

GENERAL DIMENSIONS



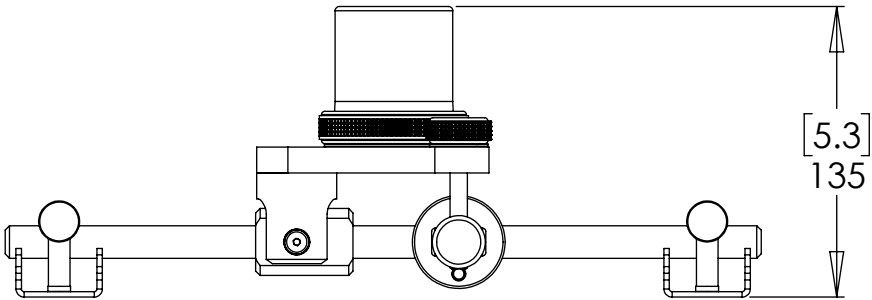
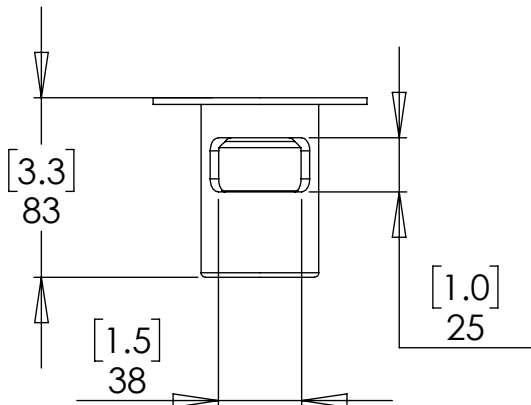
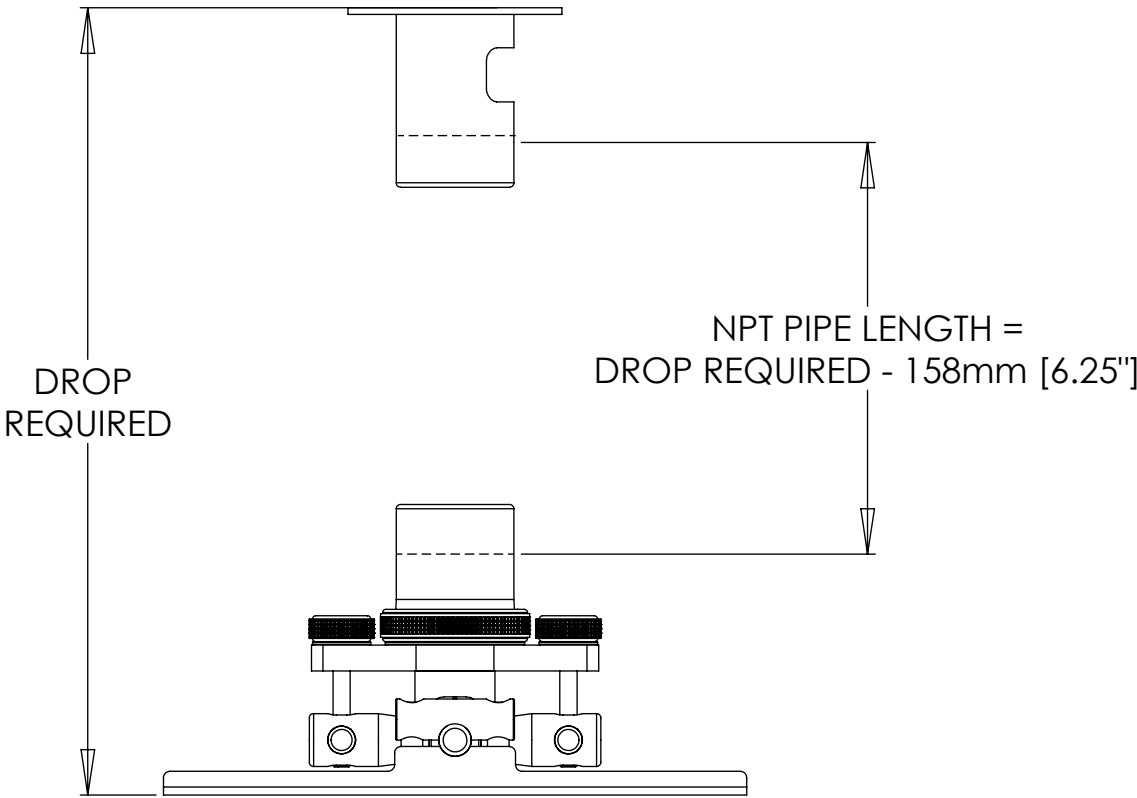
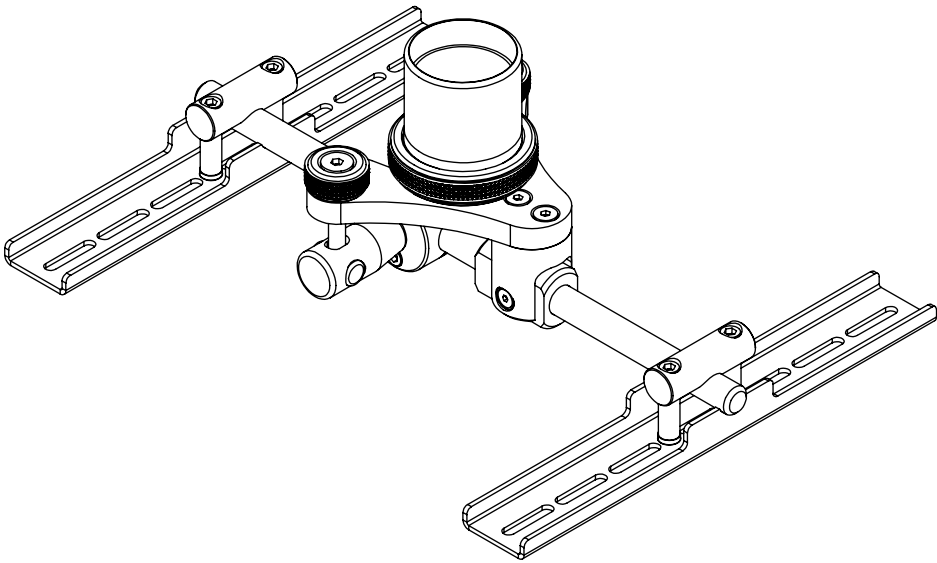
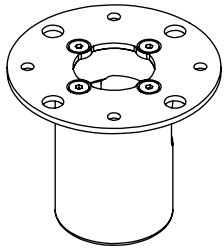
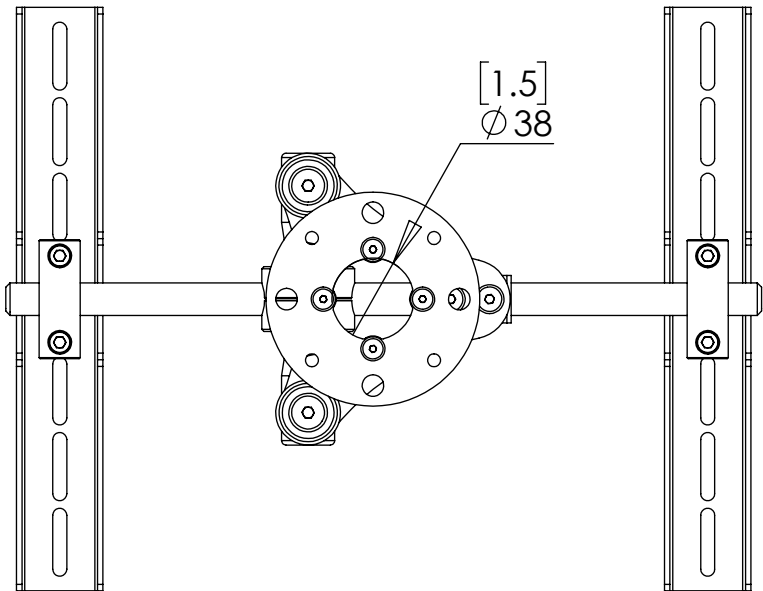
PM PROJECTOR MOUNT SYSTEM

NPT DIMENSIONS

This mount set up allows for standard 1 1/2" NPT pipe to be used to allow the installer to make their own custom lengthpole.

The overall length of the pipe is just 6.25" [158mm] less than the overall drop required from ceiling to projector.

Couplings are machined aluminium finish.



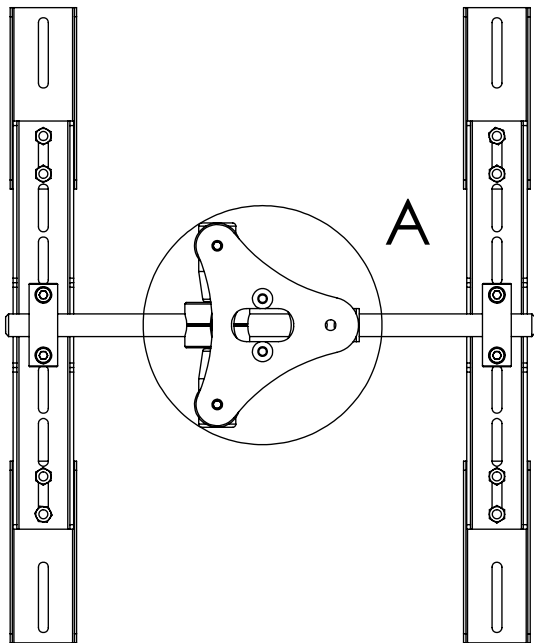
PM PROJECTOR MOUNT SYSTEM



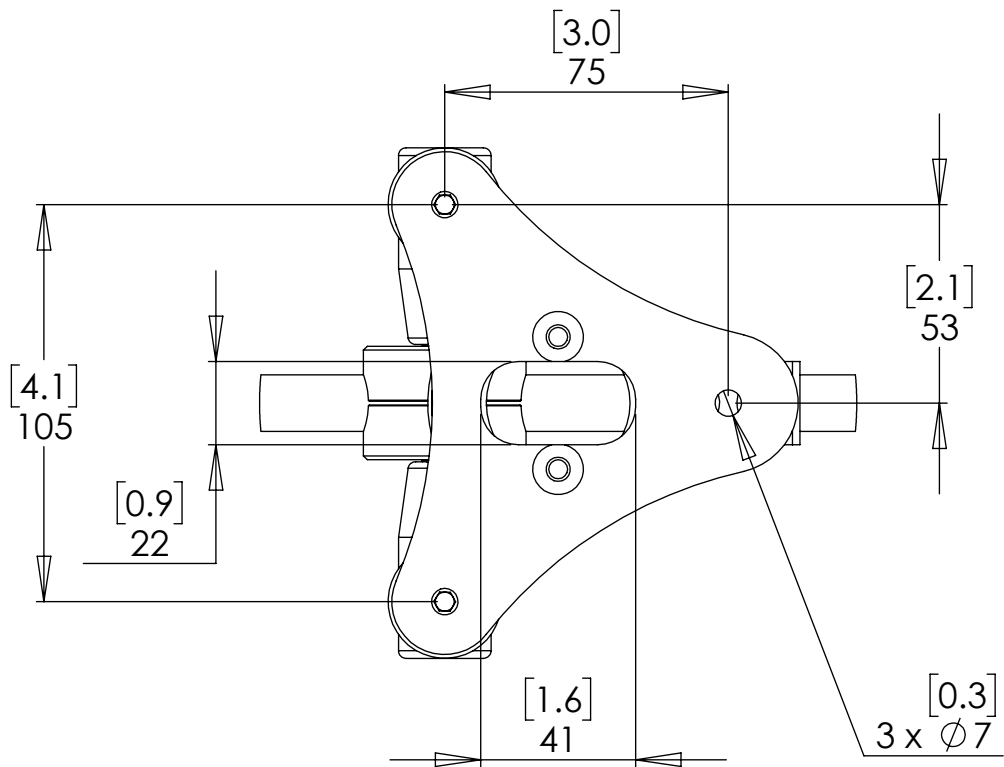
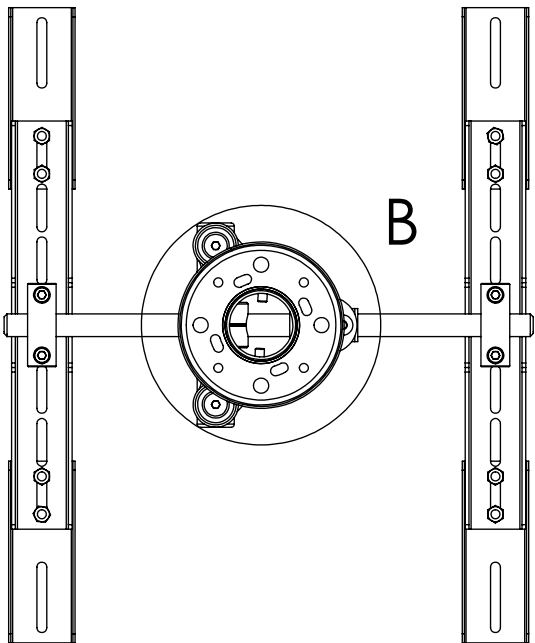
future automation

MOUNTING OPTIONS

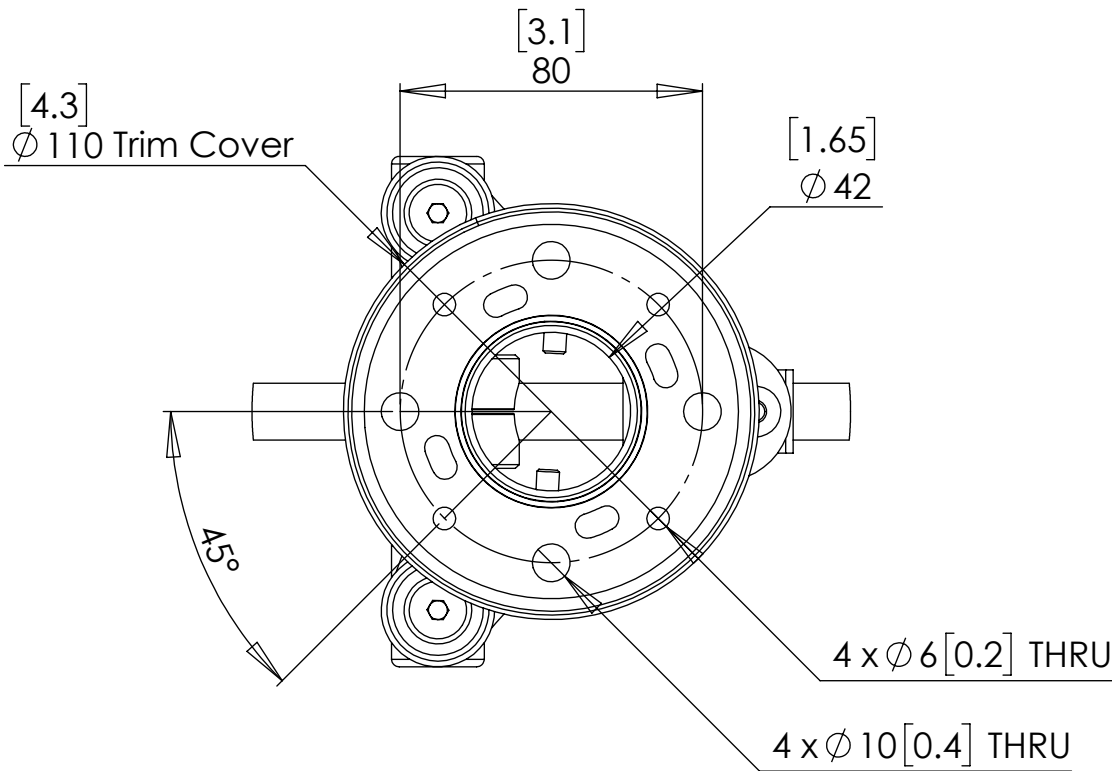
Surface Mount:



Pole Mount:



DETAIL A



DETAIL B