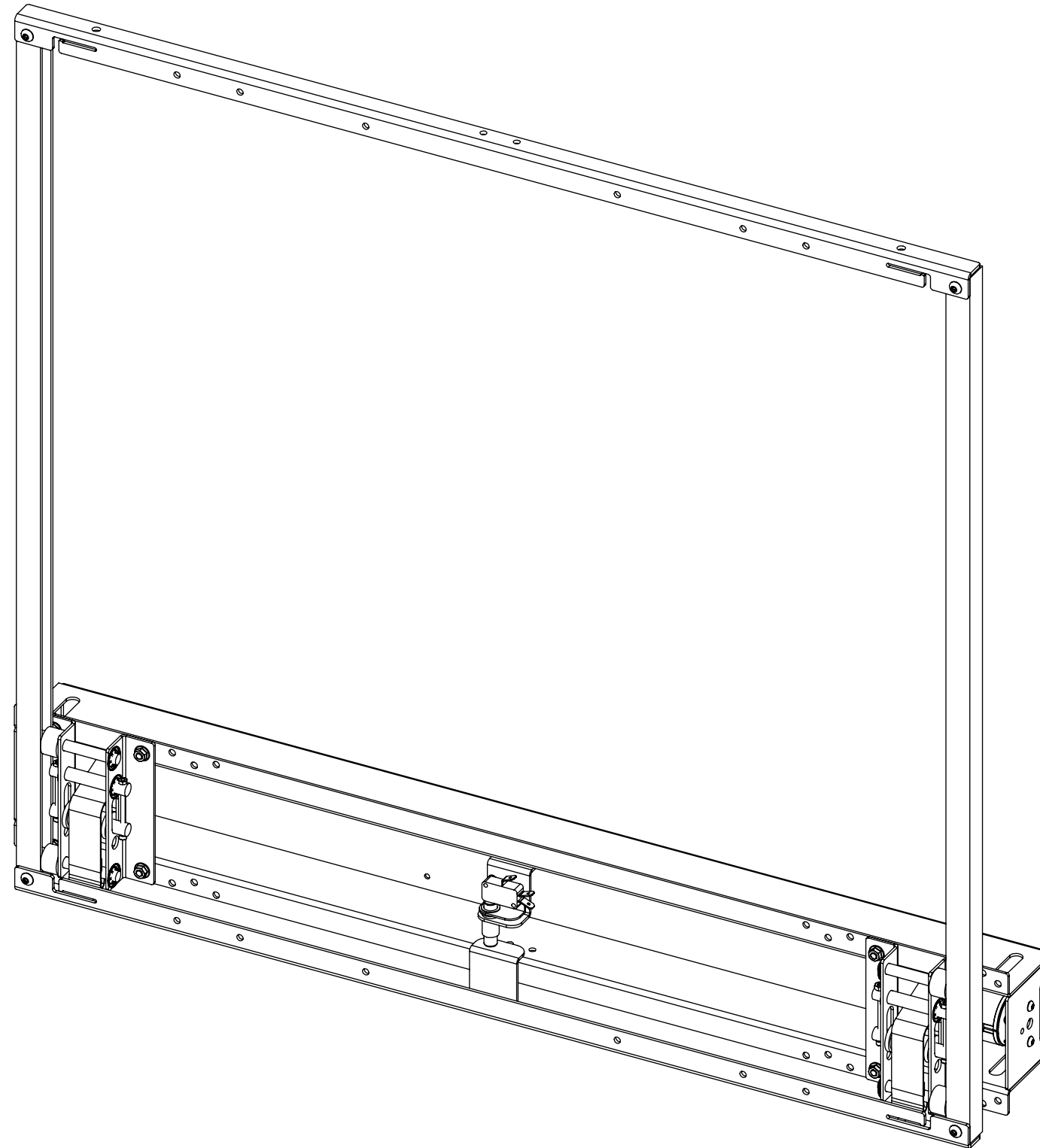


# PIC-1

## PICTURE LIFT MECHANISM



future automation



# PIC-1

## PICTURE LIFT MECHANISM



SPECIFICATION	MEASUREMENTS
Product Dimensions (H x W x D)	718mm (28 1/4") x 797mm (31 3/8") x 102mm (4")
Maximum Weight Capacity	10Kg (22lb)
Maximum Travel	560mm (22 1/6")
Product Weight	7Kg (15lb)
Packaging Dimensions	930mm (36 5/8") x 300mm (11 13/16") x 210mm (8 1/4")
Shipping Weight	10Kg (22lb)
Movement Type	Motorised
Power Supply Required	110V - 240V AC
Power Consumption Max.	110W
Power Consumption Standby	3W
Control Options	IR Remote, RS232, Contact Closure
Product Options / Features	Specific B&O and Loewe mounts / adapters, Custom RAL paint finishes, Marine suitable version
Package Contents	Mechanism, IR remote control
Marine Suitable	No

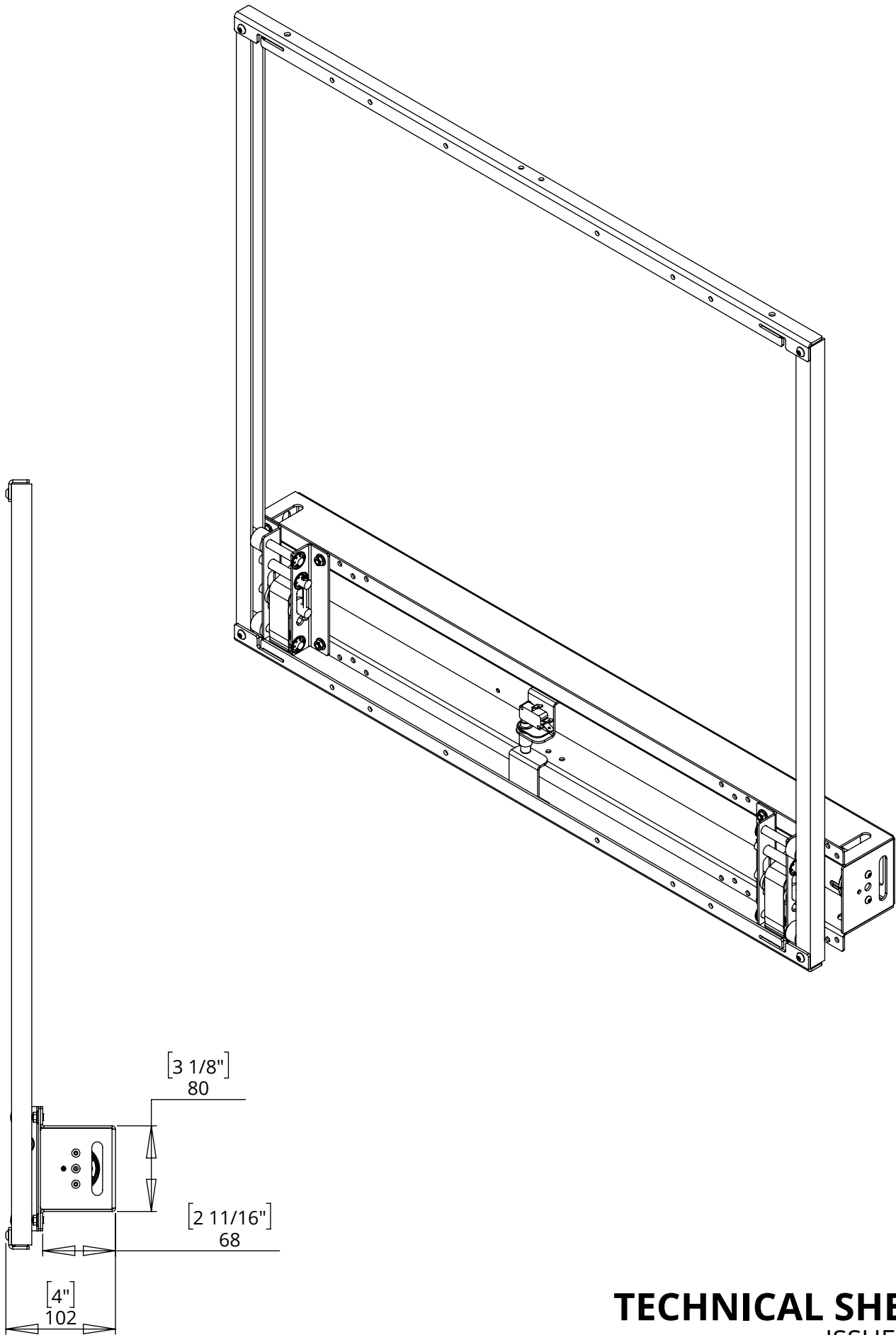
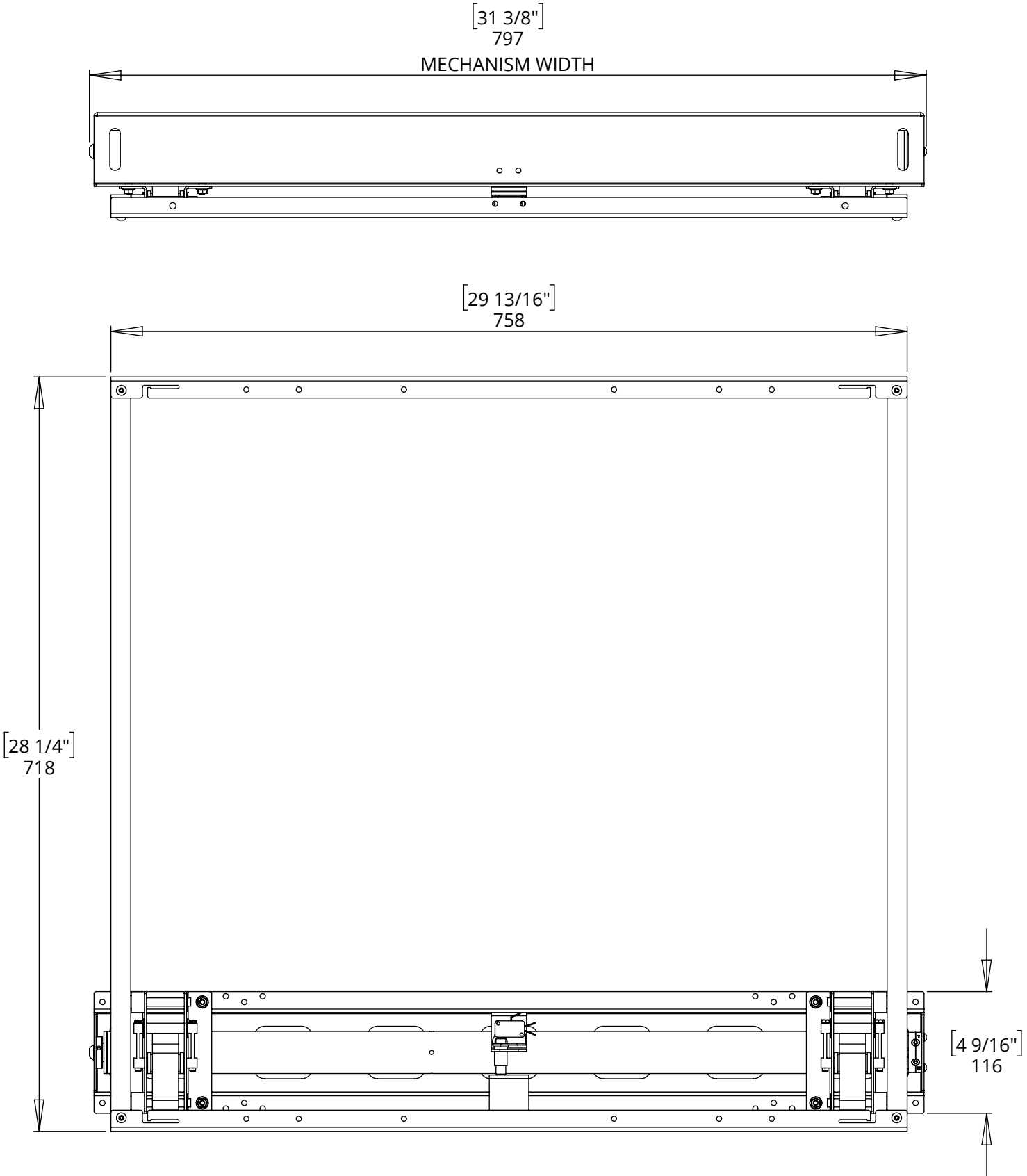
# PIC-1

## PICTURE LIFT MECHANISM



future automation

### GENERAL DIMENSIONS



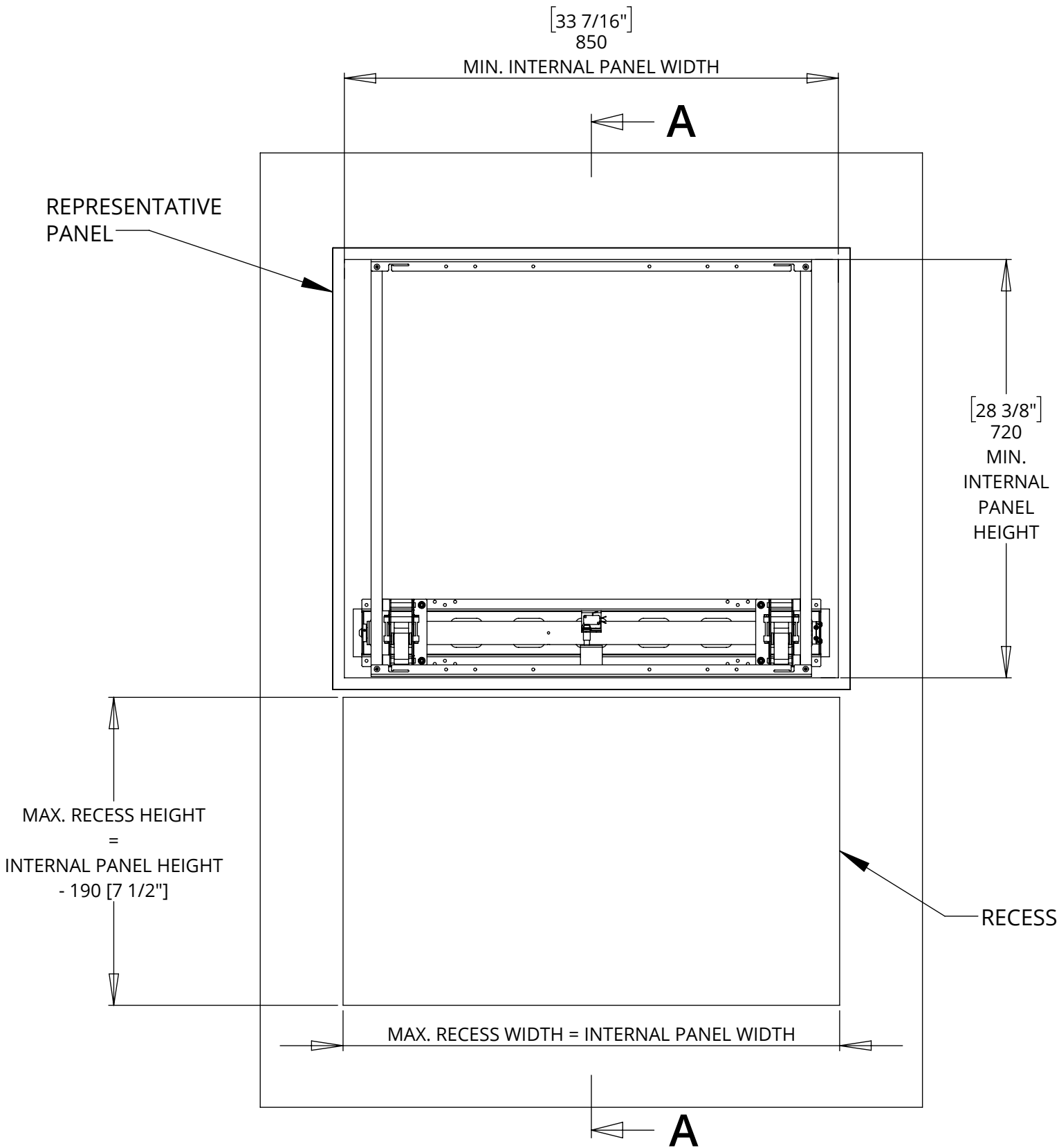
# PIC-1

## PICTURE LIFT MECHANISM



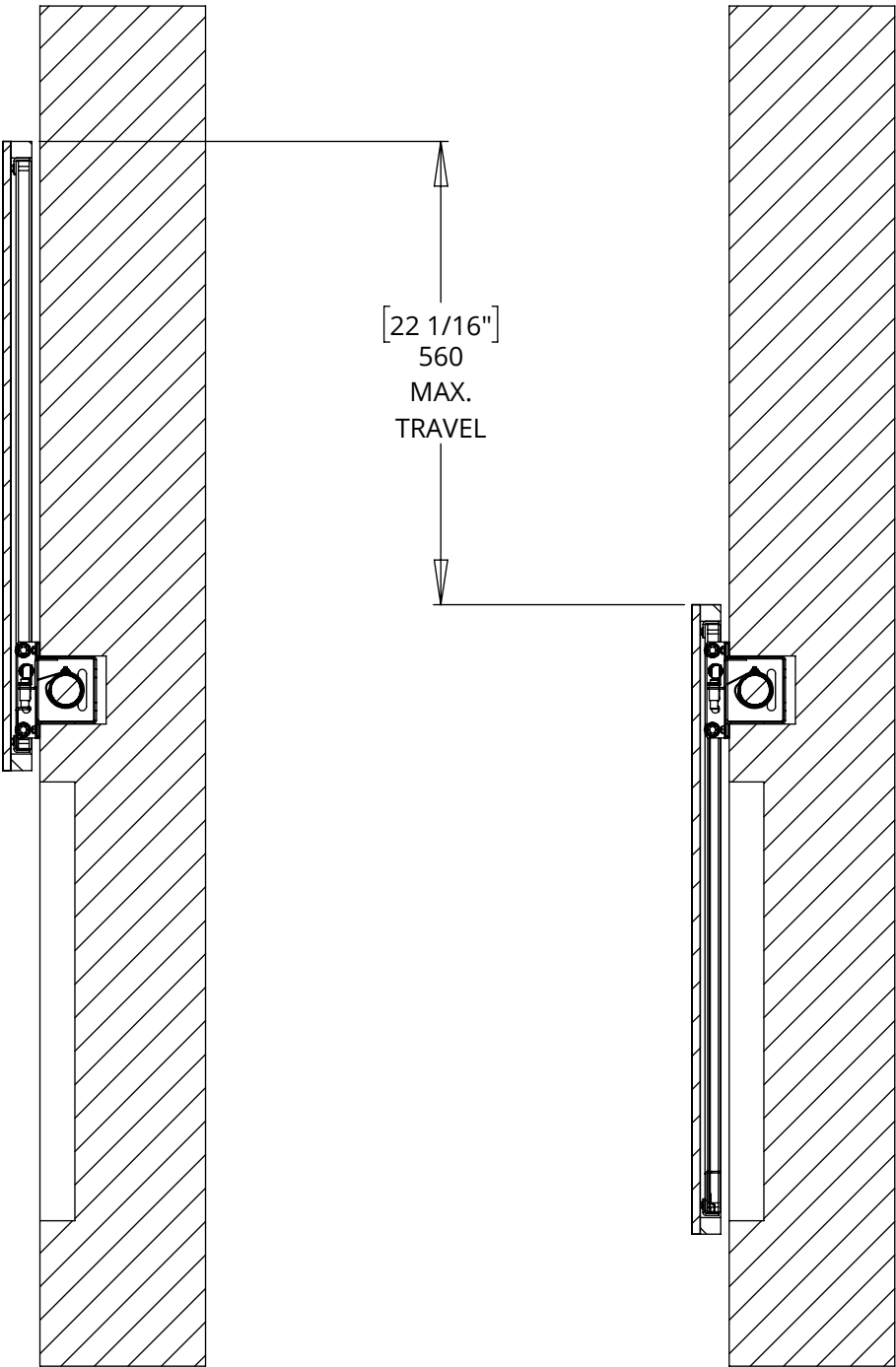
future automation

### MECHANISM DETAILS



UP POSITION

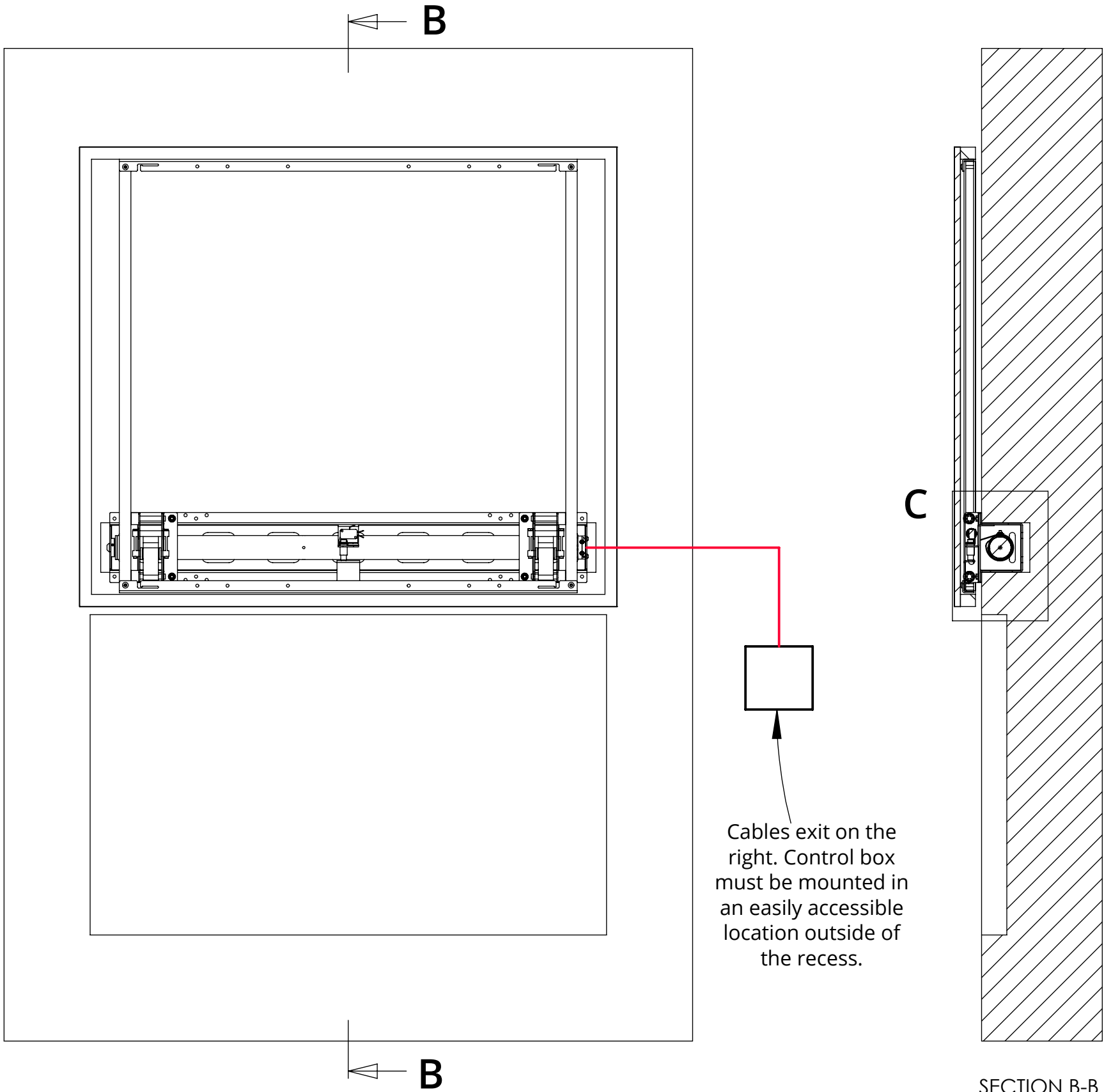
DOWN POSITION



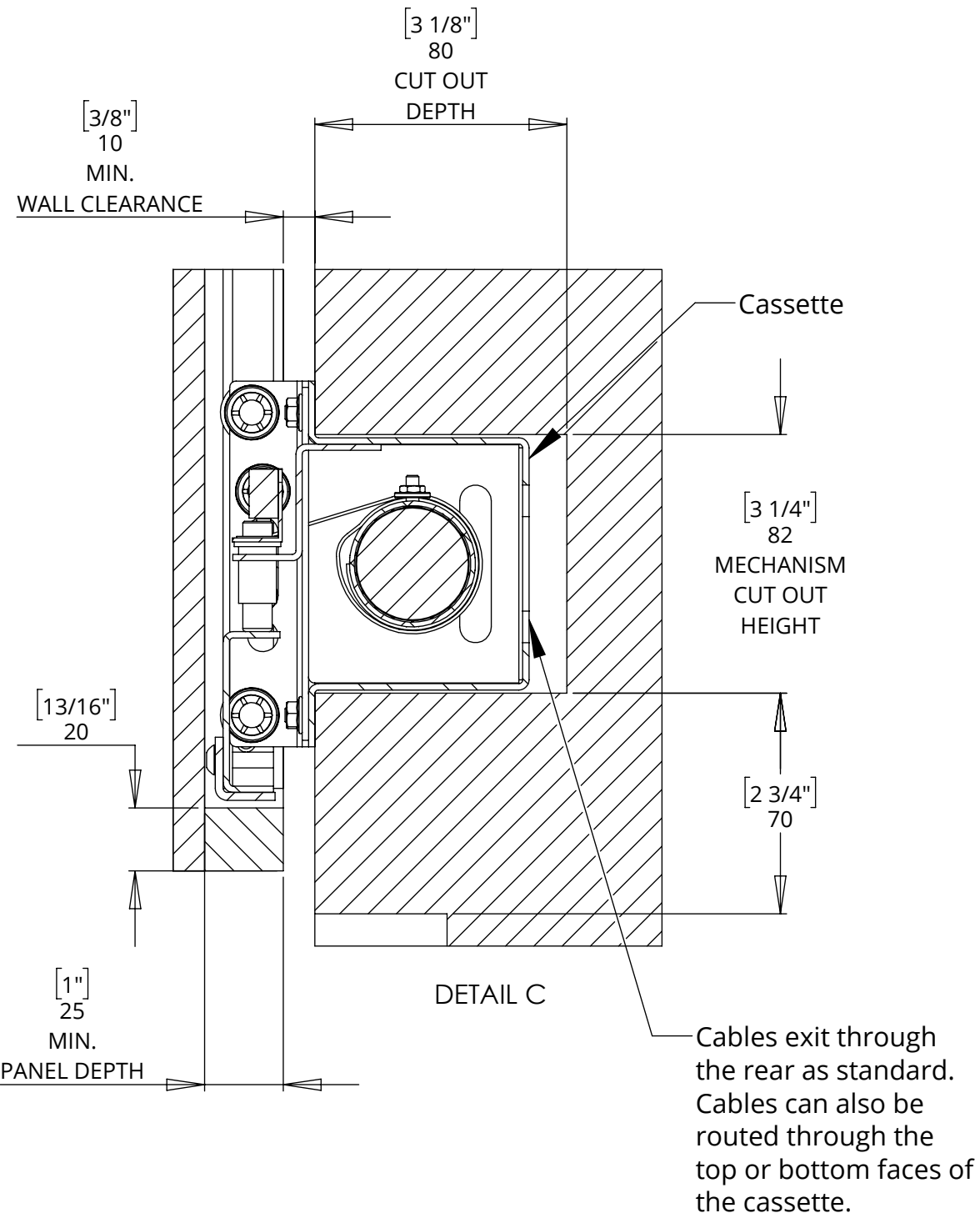
# PIC-1

## PICTURE LIFT MECHANISM

### MOUNTING DETAILS



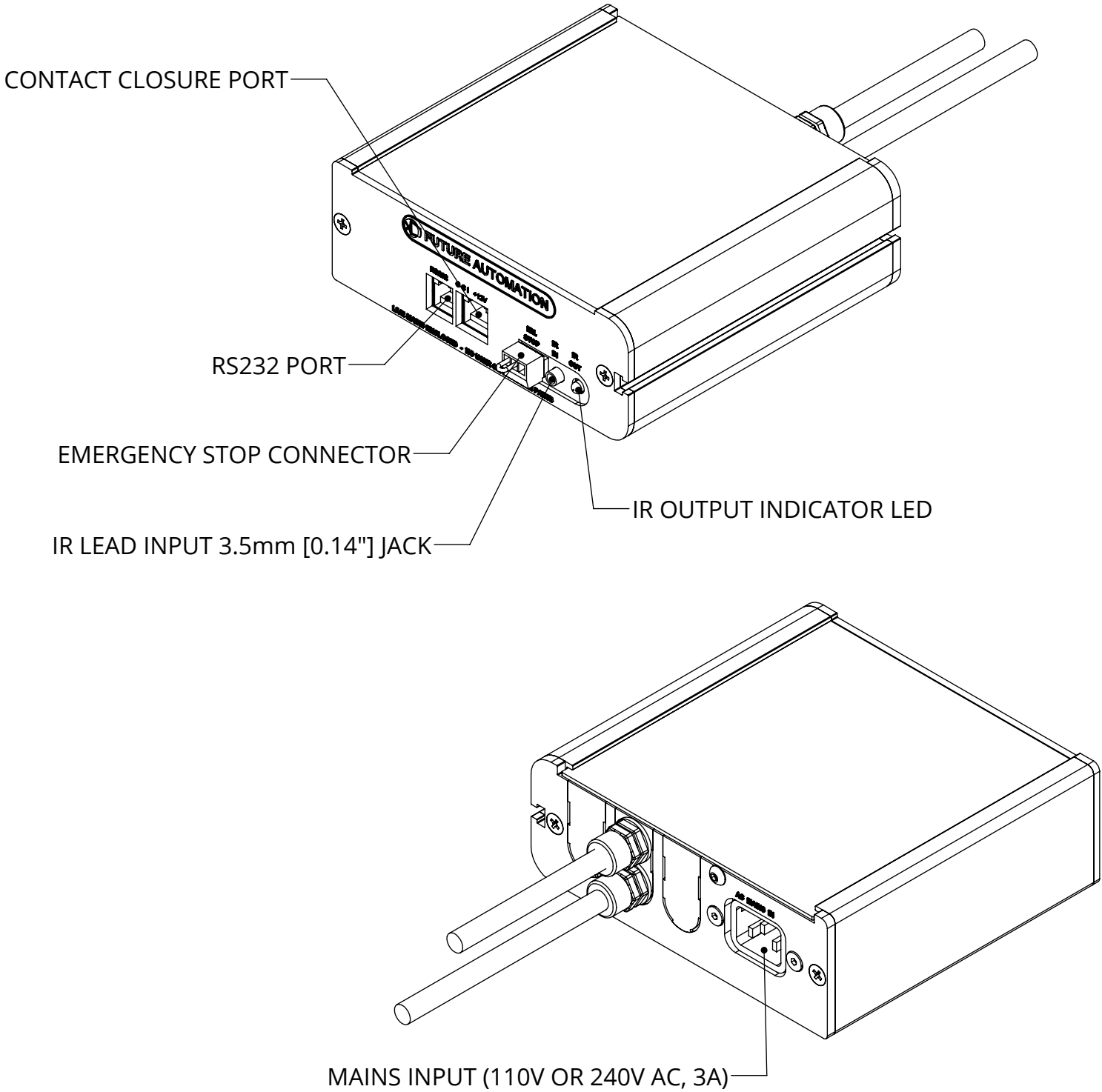
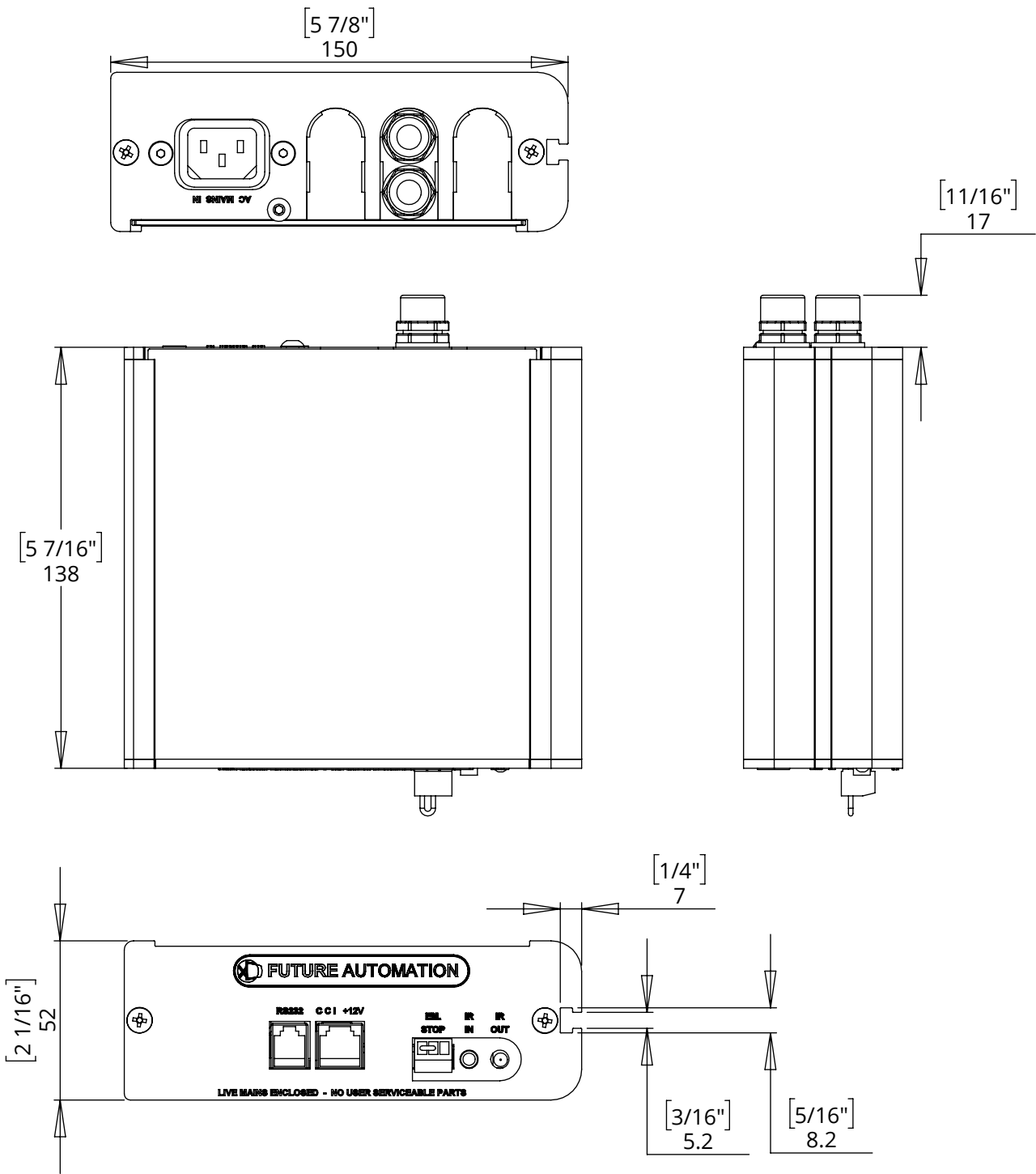
Cables exit on the right. Control box must be mounted in an easily accessible location outside of the recess.



# PIC-1

## PICTURE LIFT MECHANISM

### CONTROL BOX



#### NOTES

- POWER SUPPLY UNIT (PSU) WILL ALLOW 110V OR 240V AC INPUT. THE SAME PSU IS USED FOR EU OR US MAINS SUPPLIES.
- OTHER THAN CONTROL CABLES, ALL CABLES TERMINATE AT CONTROL BOARD VIA STANDARD PHOENIX CONNECTORS.
- CABLE LOOM LENGTH SUPPLIED AT APPROX. 2m [78 3/4"]. LOOM CAN BE EXTENDED UP TO MAXIMUM OF APPROX. 10m [400"].
- MINIMUM CABLE BEND RADIUS 25mm [1"].