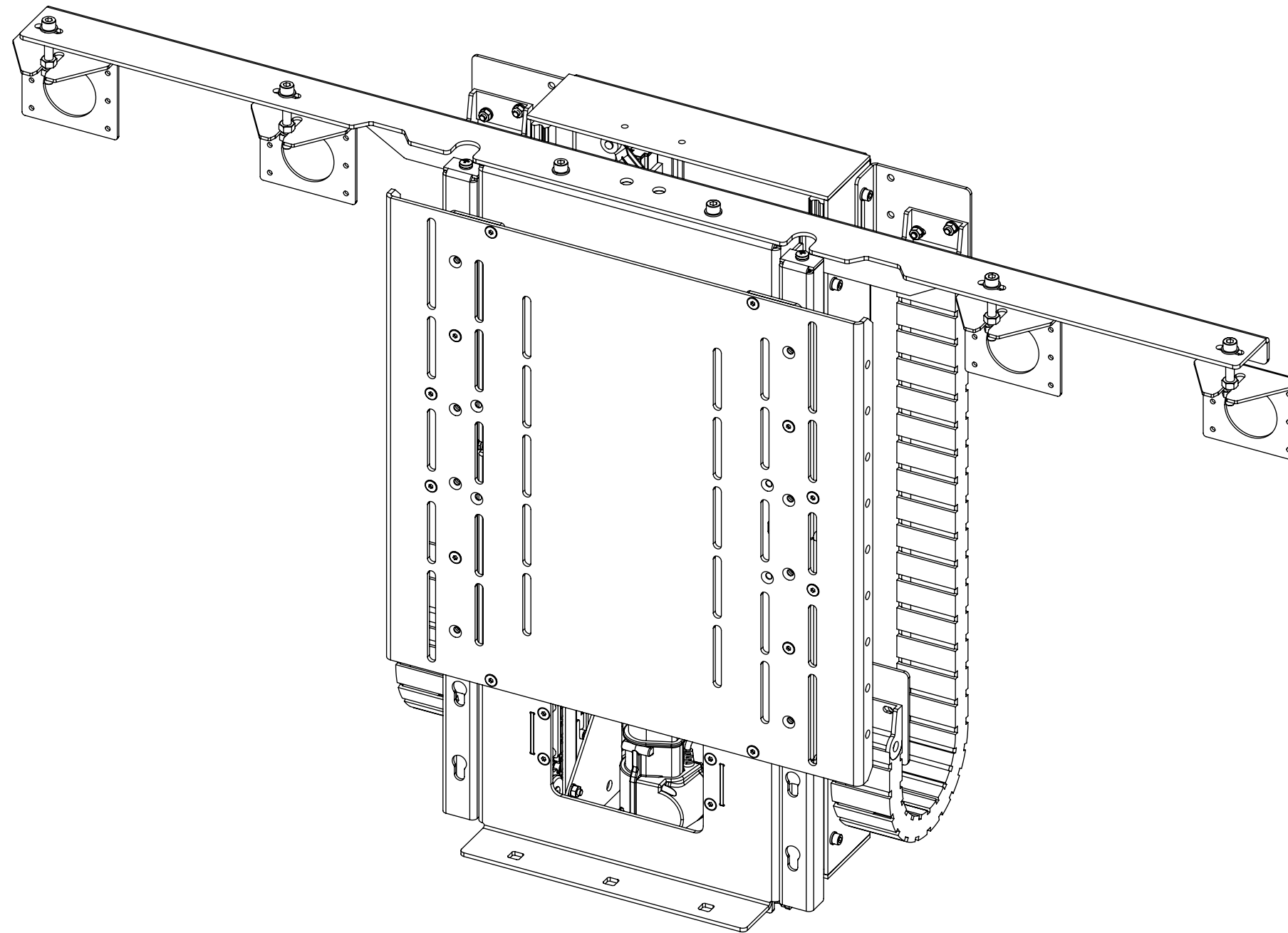


# TSLM-2

## TELESCOPIC SCREEN LIFT MEDIUM



future automation



# TSLM-2

## TELESCOPIC SCREEN LIFT MEDIUM



future automation

| SPECIFICATION                                   | MEASUREMENTS  |
|---|---|
| Product Dimensions                              | 742mm (29 3/16") x 1280mm (50 3/8") x 240mm (9 7/16")   |
| Minimum Screen Height                           | 695mm (27 3/8")   |
| Maximum Screen Height                           | 875mm (34 7/16")  |
| Minimum Screen Width                            | 1280mm (50 3/8") - (Lower Width option available upon request)                                |
| Maximum Weight Capacity<br>(Screen + Enclosure) | 75Kg (165lb)  |
| Product Weight                                  | 40Kg (88lb)   |
| Packaging Dimensions                            | TBC   |
| Shipping Weight                                 | TBC   |
| Movement Type                                   | Motorised   |
| Power Supply Required                           | 110V - 240V   |
| Power Consumption Max.                          | 250W  |
| Power Consumption Standby                       | 3W  |
|   |   |
| Mounting Patterns Supported                     | VESA 200, 300, 400 W x 200, 300, 400 H - (Other VESA patterns upon request)                   |
| Control Options                                 | IR Remote, RS232, Contact Closure   |
| Product Options / Features                      | Specific B&O and Loewe mounts / adapters, Custom RAL paint finishes, Outdoor suitable version |
| Package Contents                                | Mechanism, IR remote control  |
| Marine Suitable                                 | YES   |
| Outdoor Suitable                                | NO  |

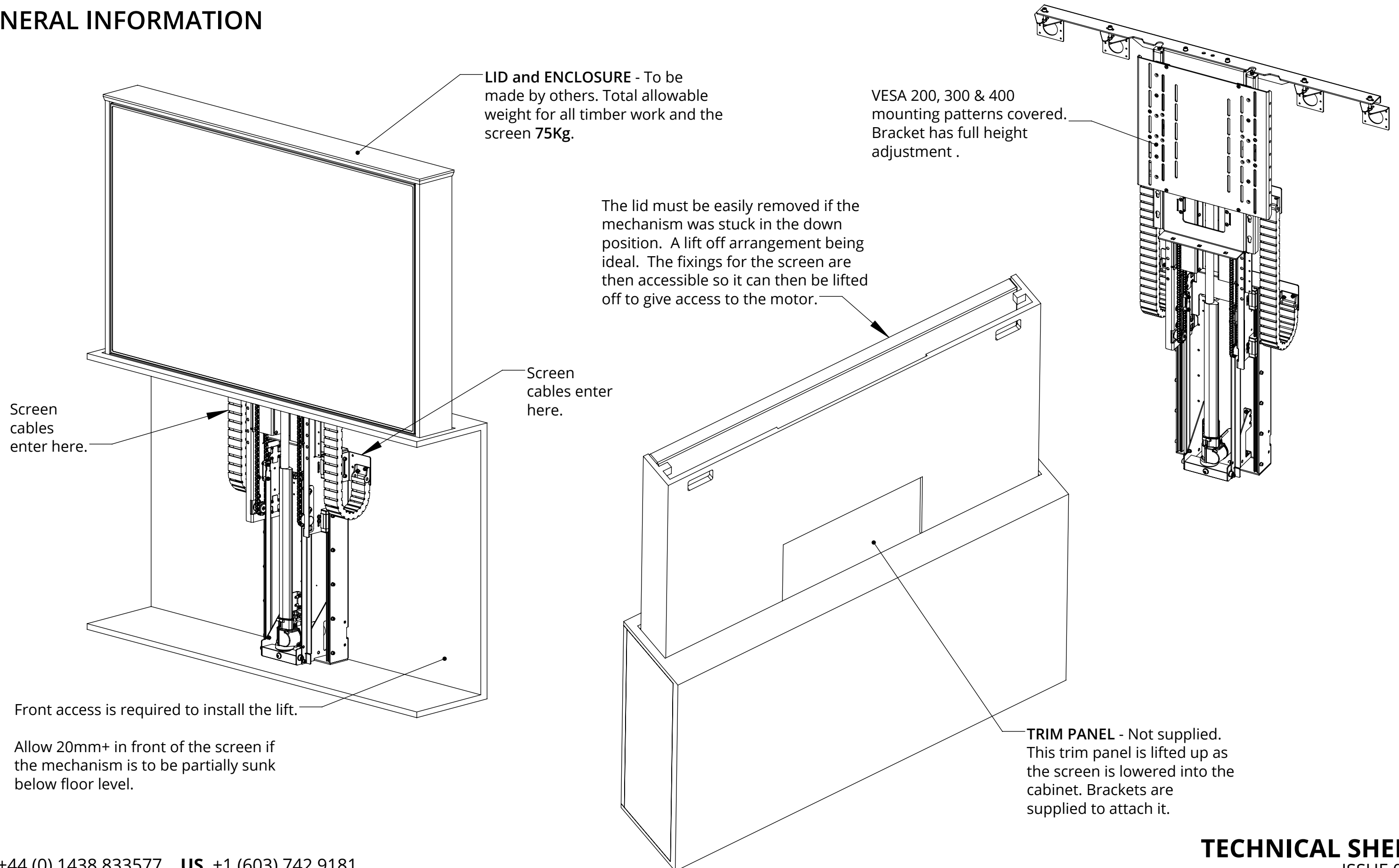
# TSLM-2

## TELESCOPIC SCREEN LIFT MEDIUM



future automation

### GENERAL INFORMATION



# TSLM-2

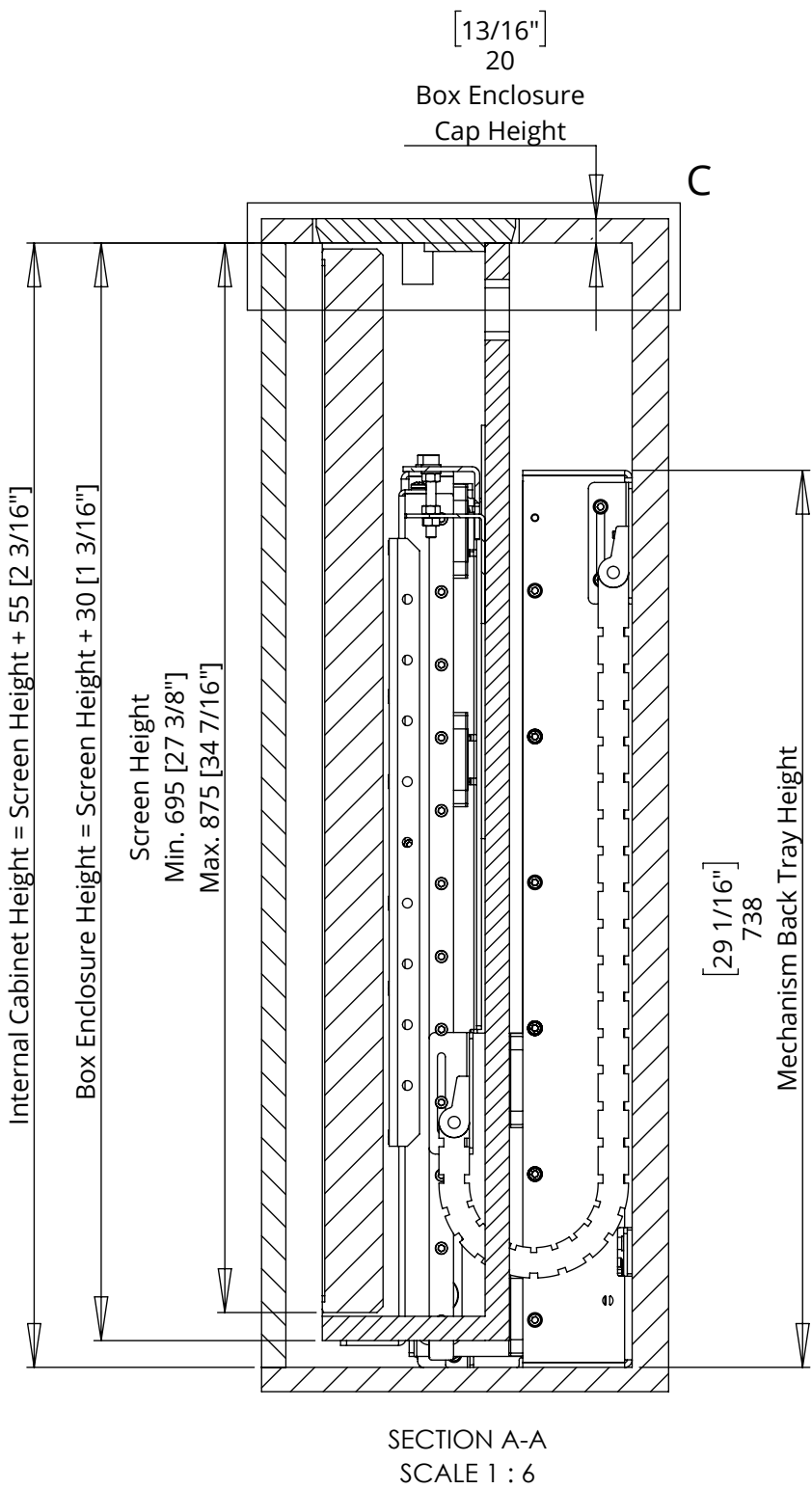
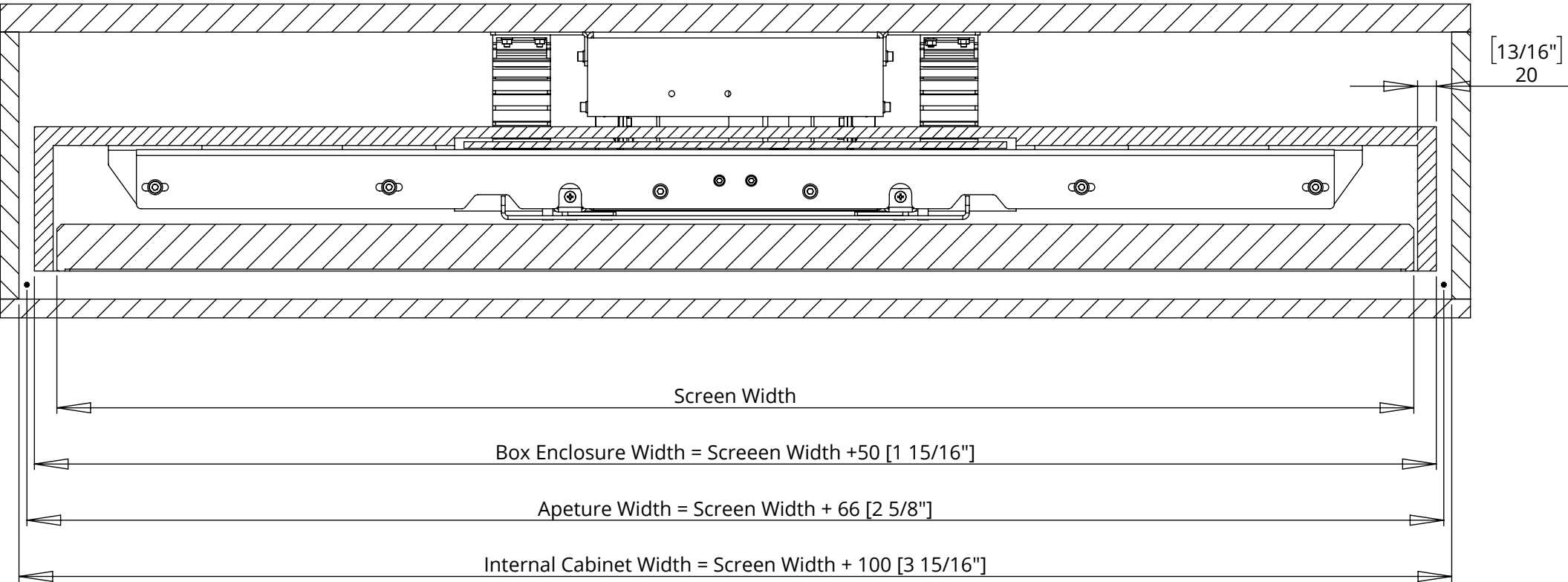
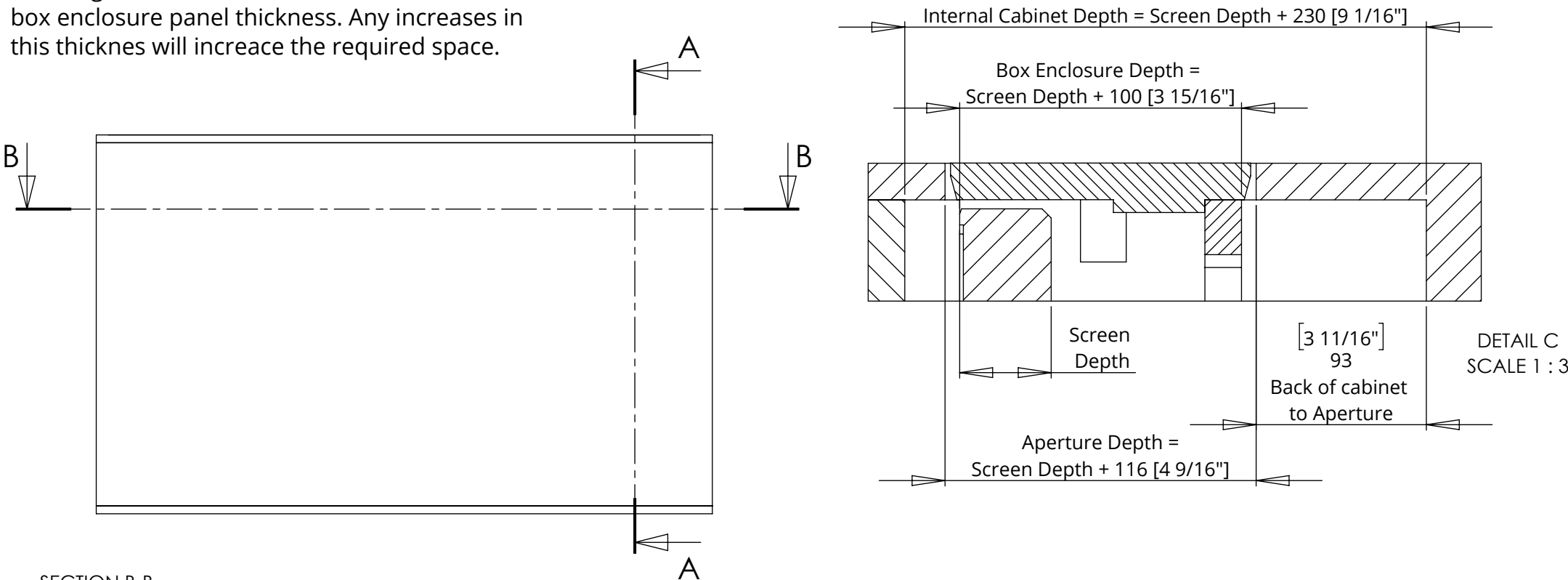
## TELESCOPIC SCREEN LIFT MEDIUM



future automation

### CABINET SIZING

All sizing calculations are based off a 20mm [0.79"] box enclosure panel thickness. Any increases in this thicknes will increase the required space.

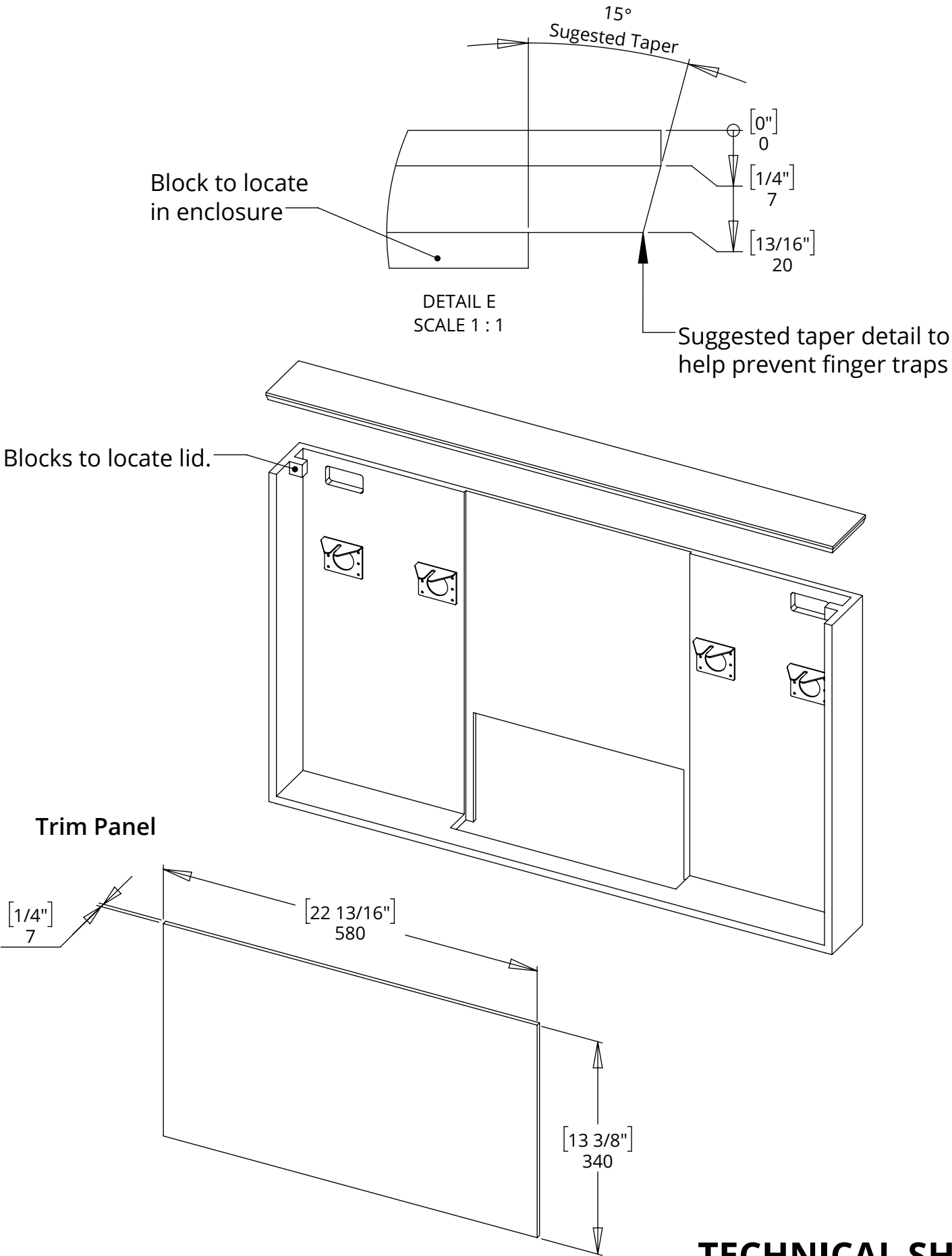
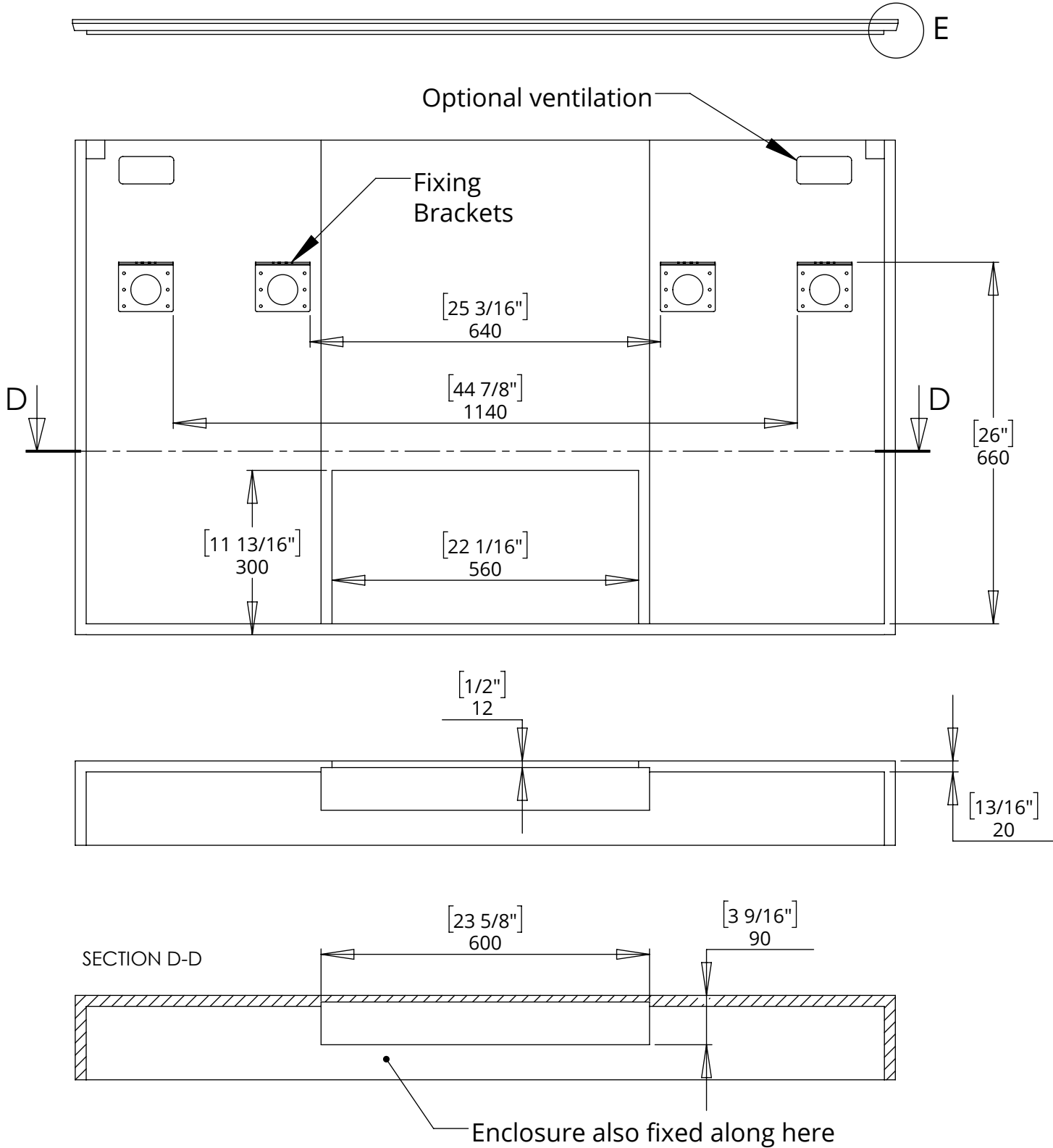


# TSLM-2

## TELESCOPIC SCREEN LIFT MEDIUM

### BOX ENCLOSURE DETAILING

The Screen, Enclosure, Lid and the Trim panel must weigh no more than 75Kg.



# TSLM-2

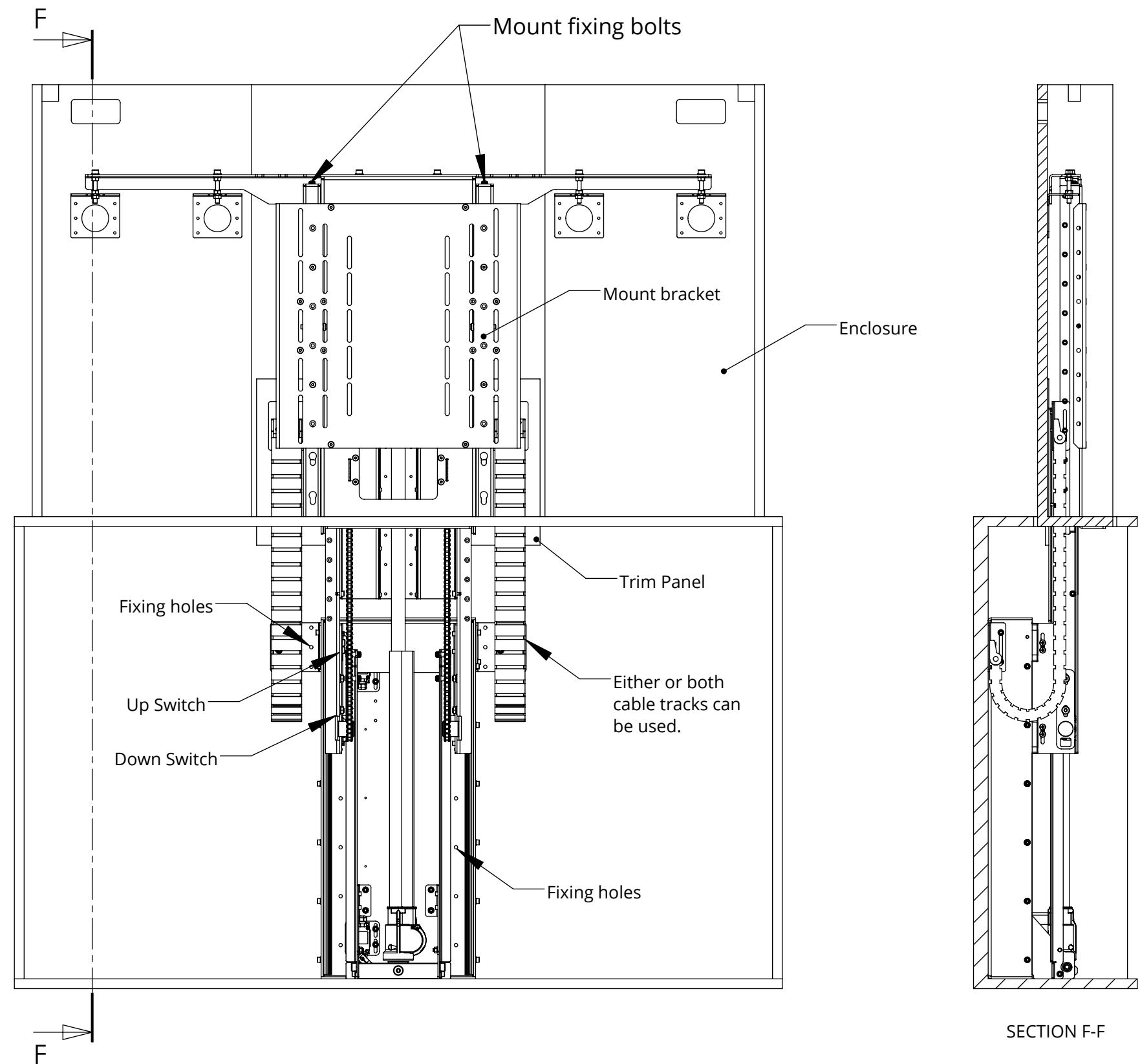
## TELESCOPIC SCREEN LIFT MEDIUM



future automation

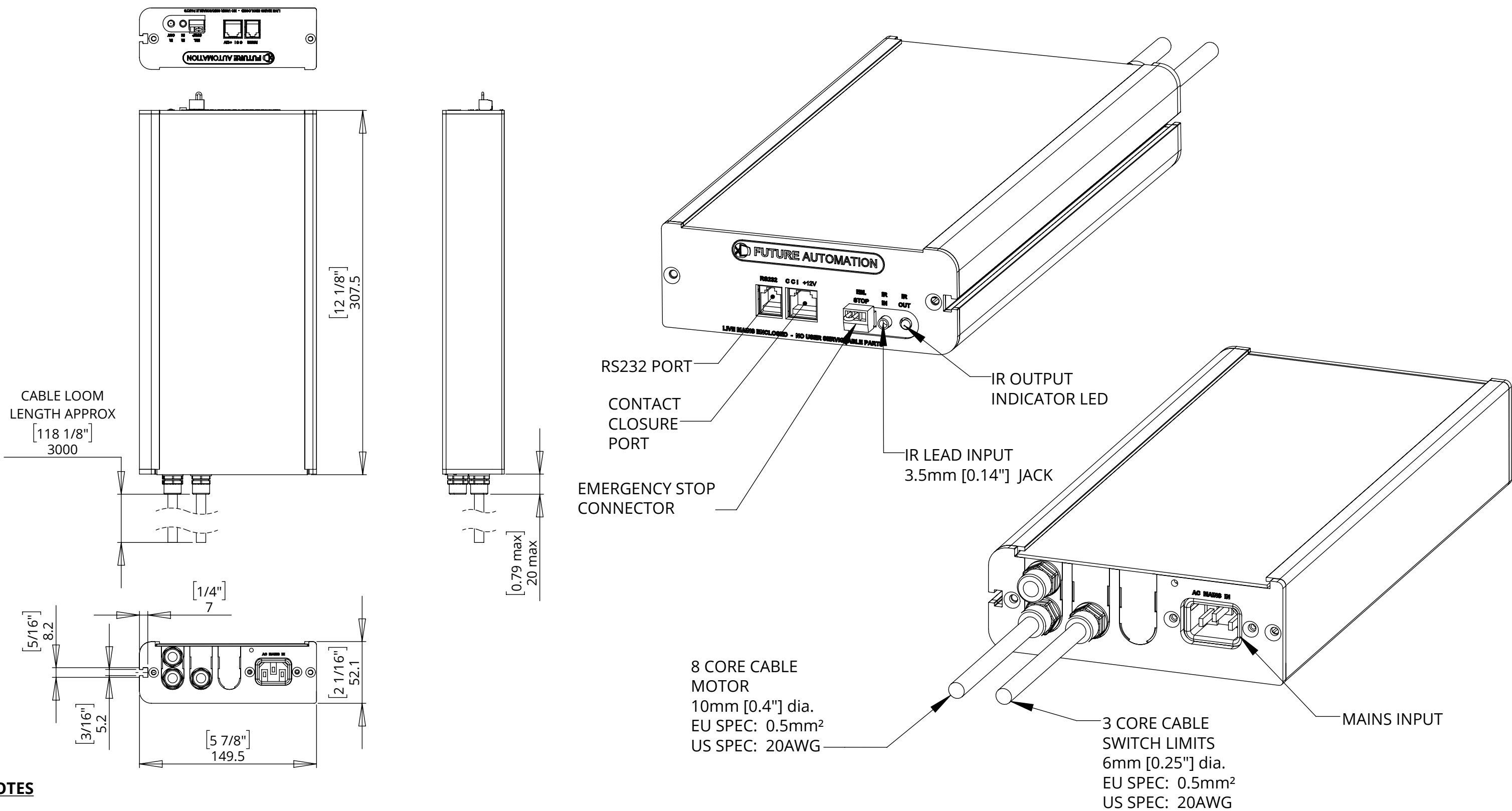
### INSTALL INSTRUCTIONS

- Check that the cabinet, enclosure, lid and the trim panel are made to the details shown on the previous pages.
- You can stand the mechanism up on its base to test it before putting in the cabinet. See control document for details. Use the IR remote with caution and always cover the STOP button in case of issues.
- Centrally fix the mechanism to the back of the cabinet in the places shown.
- Run up and down and then add the enclosure.
- Adjust the position of the enclosure and adjust the up and down switches with caution. Temporarily add lid to check height.
- Run screen cables up into enclosure. Secure cables as they enter and leave the cable tracks with cable ties. Make sure no cables can get tangled or caught as the mechanism moves.
- Add trim panel. And adjust. This trim panel moves up into position as the TV lifts. Observe this movement and understand it before fixing.
- The upright plate can be adjusted in height by moving it to a different set of keyholes. Fix the plate to the back of the screen and mount to mechanism using the keyholes. Ensure the plate is secured using the fixing bolts located at the top of the keyhole plates.
- Check movement with screen with caution.



# TSLM CONTROL BOX

## CONTROL BOX FOR TELESCOPIC SCREEN LIFT



**NOTES**

- POWER SUPPLY UNIT (PSU) WILL ALLOW 110V OR 240V AC INPUT. THE SAME PSU IS USED FOR EU OR US MAINS SUPPLIES.
- OTHER THAN CONTROL CABLES, ALL CABLES TERMINATE AT CONTROL BOARD VIA STANDARD PHOENIX CONNECTORS.
- CABLE LOOM LENGTH SUPPLIED AT APPROX. 3m [118"]. LOOM CAN BE EXTENDED UP TO MAXIMUM OF APPROX. 10m [400"].
- MINIMUM CABLE BEND RADIUS 25mm [1"].