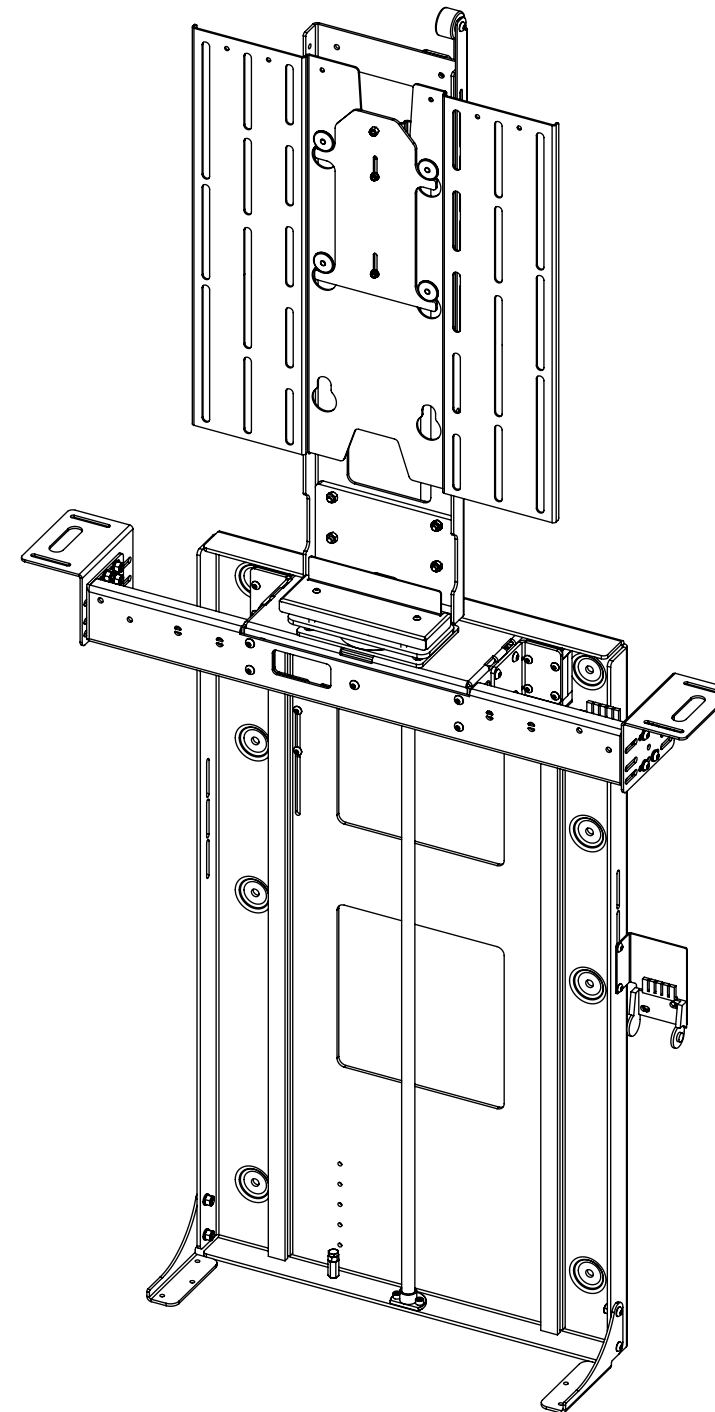
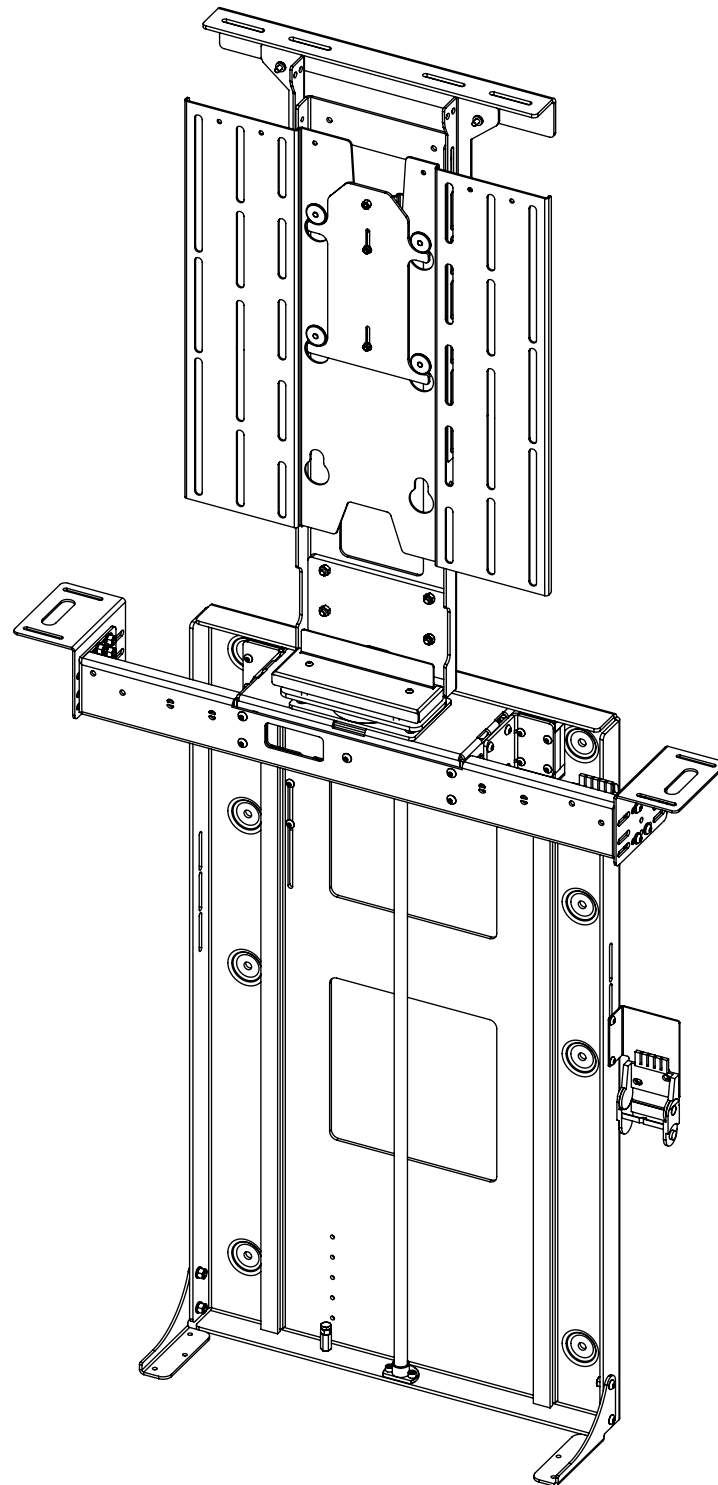


# LSM-BE/PF 5

## LIFT SYSTEM FOR BOX ENCLOSURE/PUSH FLAP



future automation



# LSM-BE/PF 5

## LIFT SYSTEM FOR BOX ENCLOSURE/PUSH FLAP



future automation

SPECIFICATION	MEASUREMENTS
Maximum Screen Height	730mm (28 3/4")
Maximum Lifting Capacity	50Kg (110lb)
Maximum Lifting Capacity (Marine)	30Kg (66lb)
Internal Cabinet Height	880mm (34 5/8")
Decibel Rating	52 dB
Packaging Dimensions	1080 x 850 x 330mm (42 1/2 x 33 7/16 x 13")
Shipping Weight	35Kg (77lb)
Movement Type	Motorised
Power Supply Required	110V - 240V AC
Power Consumption	250 - 500W
Power Consumption Standby	3W
Mounting Patterns Supported	VESA 400, 300, 200 W x 400, 300, 200 H
Control Options	IR Remote, RS232, Contact Closure, RF Available
Product Options / Features	Specific B&O and Loewe mounts / adapters, Custom RAL paint finishes
Package Contents	Mechanism, IR remote control, Push Flap Kit, Box Enclosure Kit
Marine Suitable	Yes

# LSM-BE/PF 5

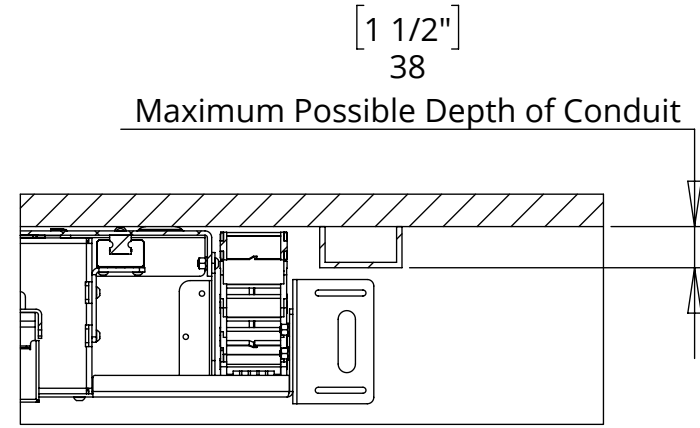
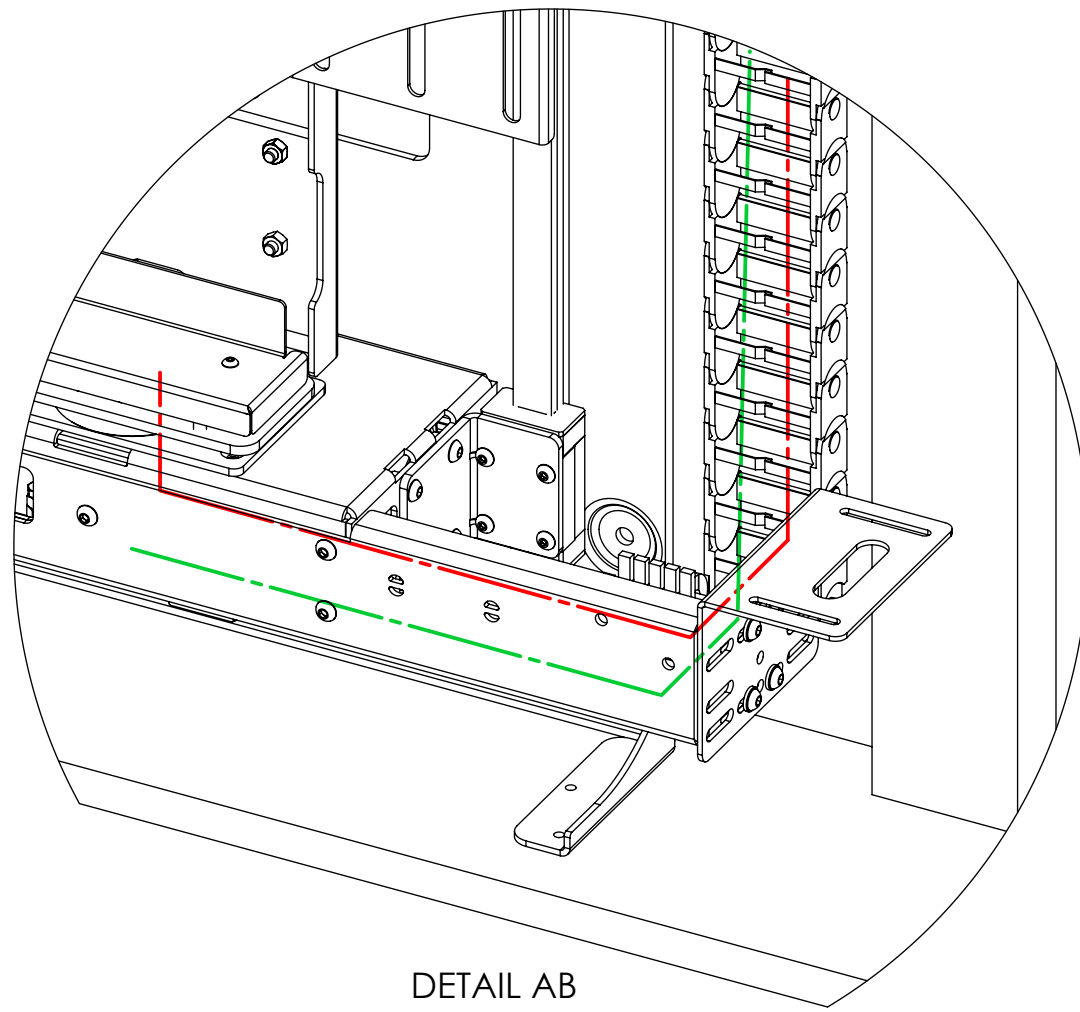
## LIFT SYSTEM FOR BOX ENCLOSURE/PUSH FLAP

### CABLE ROUTING

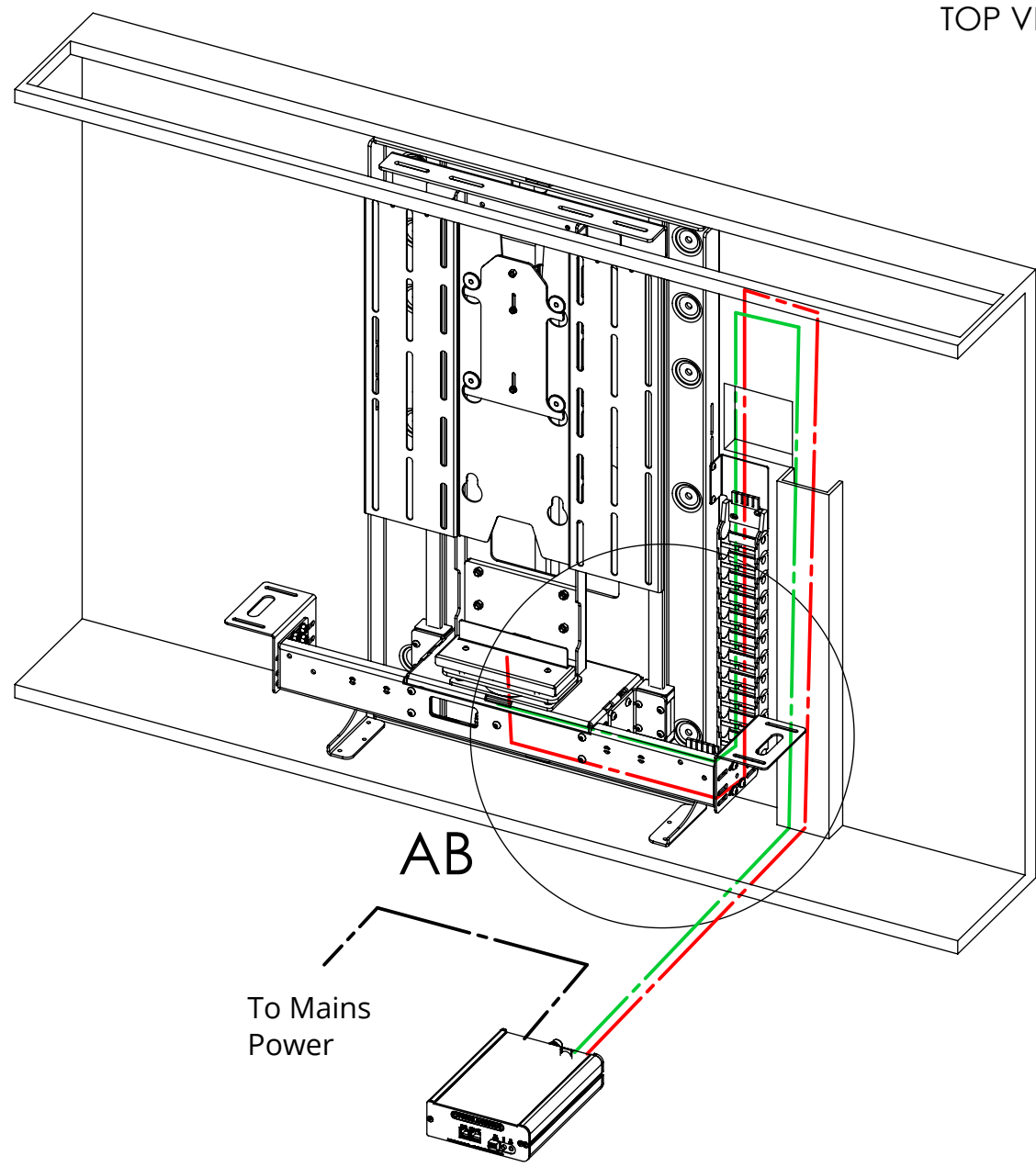
The LSM has an easily removable Mount Cover that cables from the screen can be routed underneath. Cables then travel through the centre of the Mount Boss and into the beam. Cables must be routed carefully to prevent any interference with the LSM beam as it operates.

Screen and Mechanism cables should be routed to a control box outside of the cabinet via an opening in the back of the cabinet or a conduit leading to the bottom.

- SCREEN CABLES
- MECHANISM CABLES
- POWER CABLE

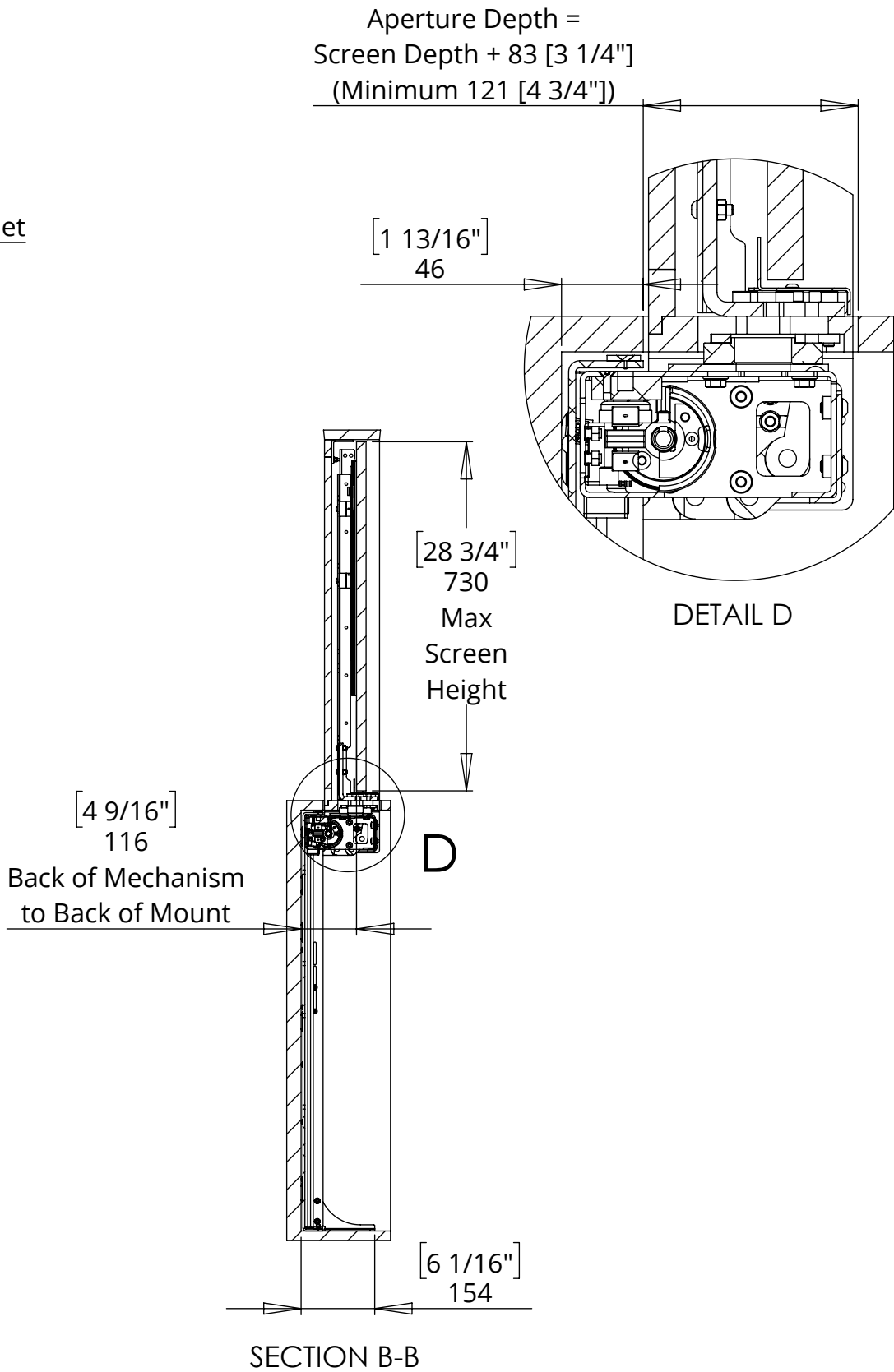
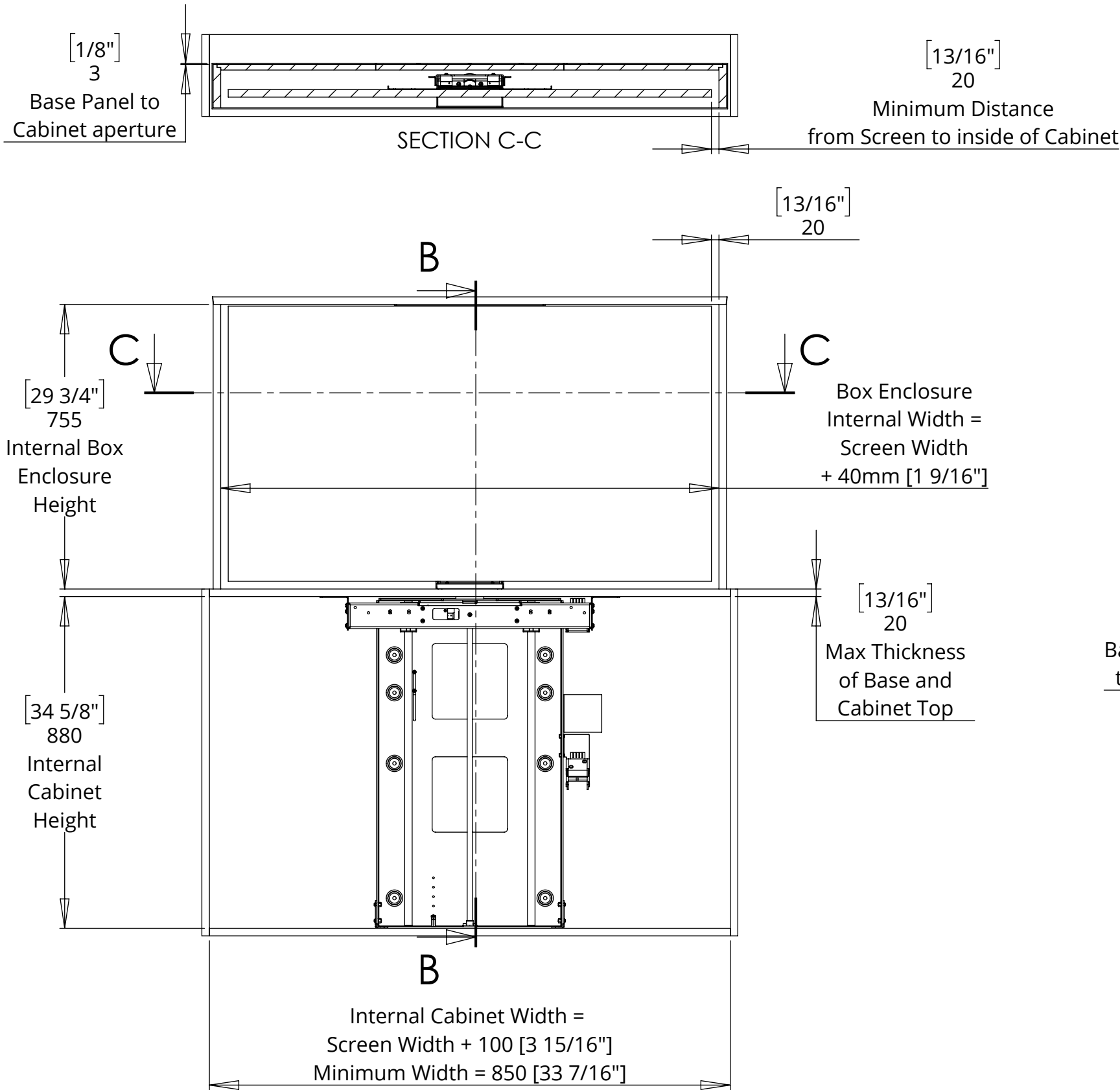


TOP VIEW



# LSM-BE/PF 5 LIFT SYSTEM FOR BOX ENCLOSURE/PUSH FLAP

LSM-BE 5 - MECHANISM UP - IN CABINET

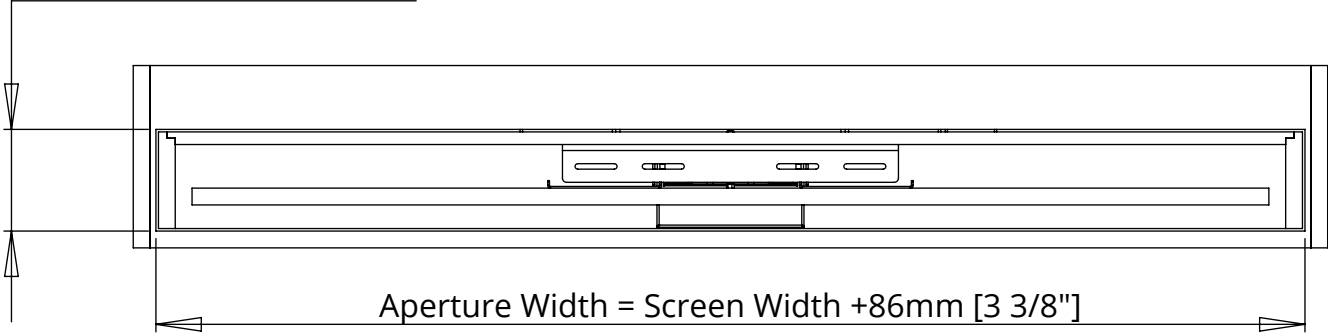


# LSM-BE/PF 5

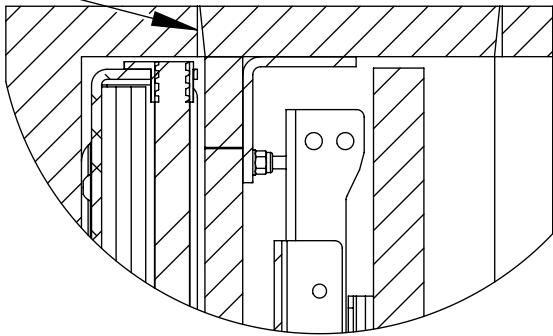
## LIFT SYSTEM FOR BOX ENCLOSURE/PUSH FLAP

### LSM-BE 5 - MECHANISM DOWN - IN CABINET

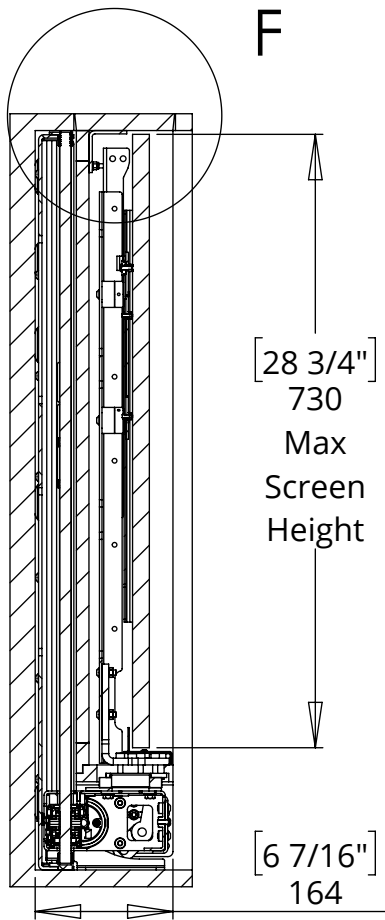
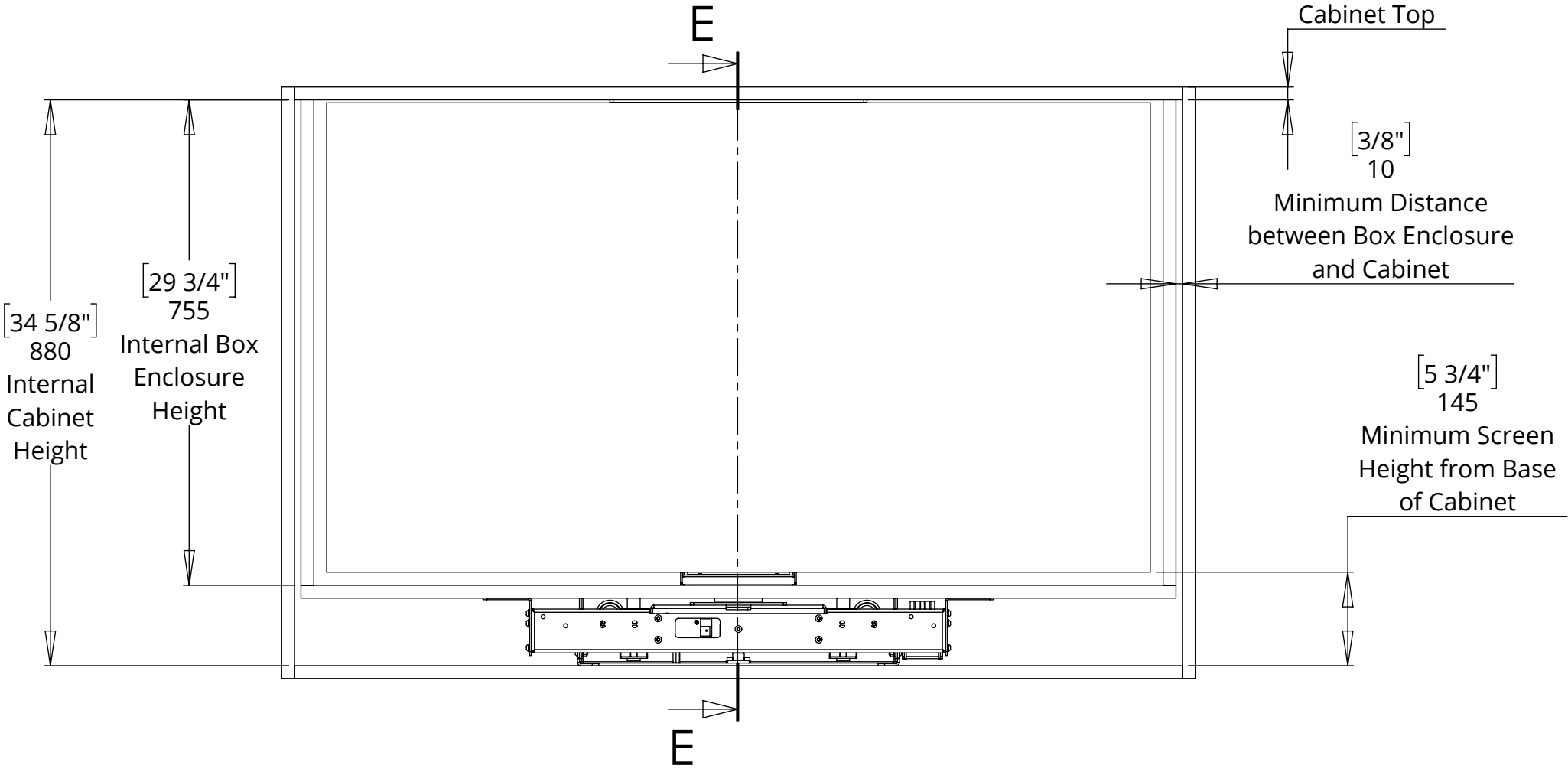
Aperture Depth =  
Screen Depth + 83 [3 1/4]  
(Minimum 121 [4 3/4])



Shown with tapered Box Enclosure Lid in square Cabinet Aperture.  
A tapered Cabinet Aperture can be used to improve the fit.



DETAIL F



SECTION E-E

# LSM-BE/PF 5

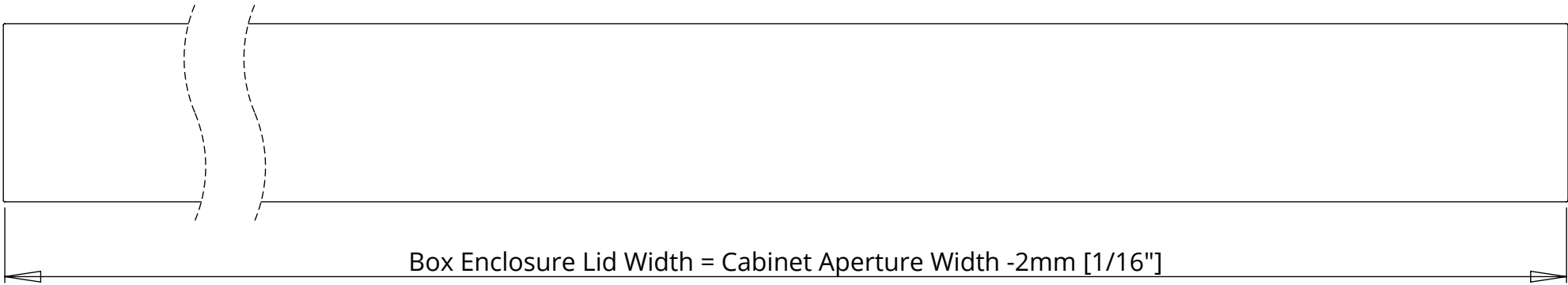
## LIFT SYSTEM FOR BOX ENCLOSURE/PUSH FLAP



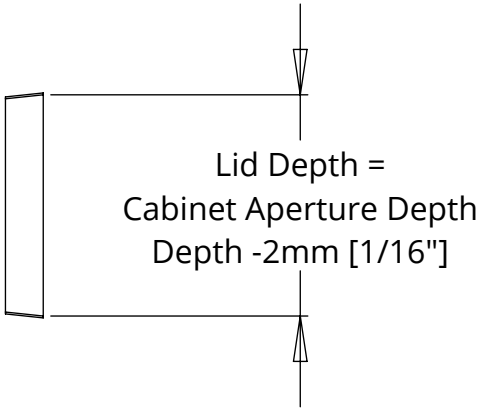
future automation

### BOX ENCLOSURE BASE PANEL AND LID DETAILS

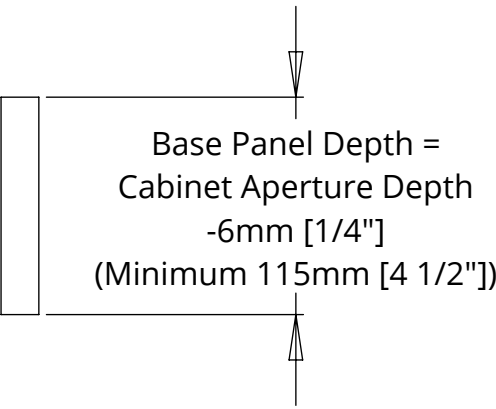
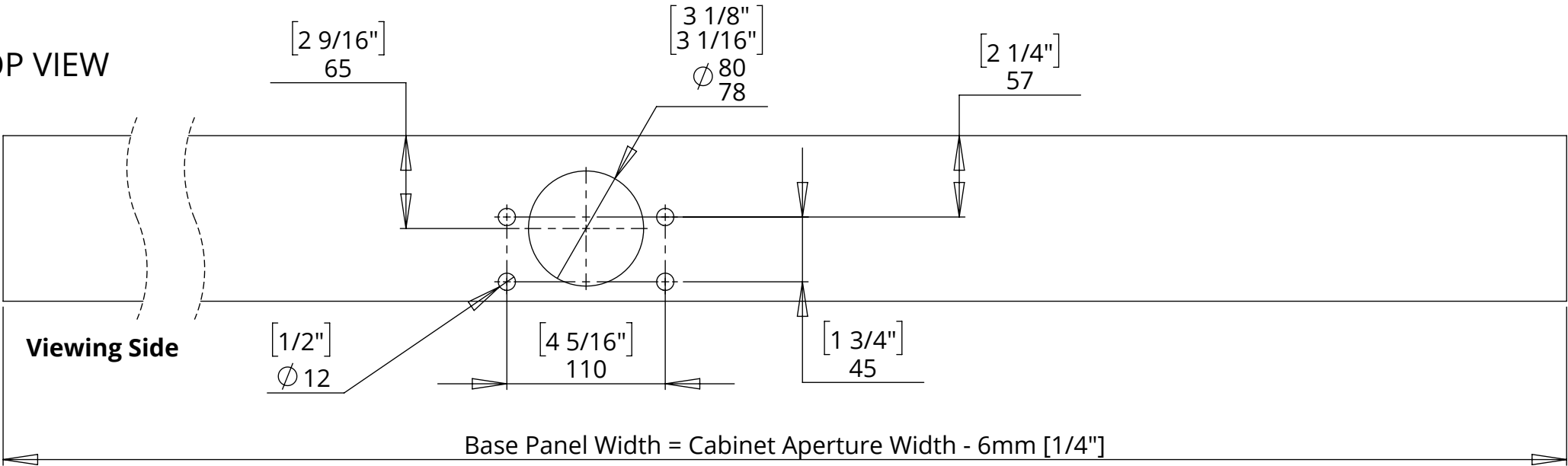
BOX ENCLOSURE LID (TAPERED) TOP VIEW



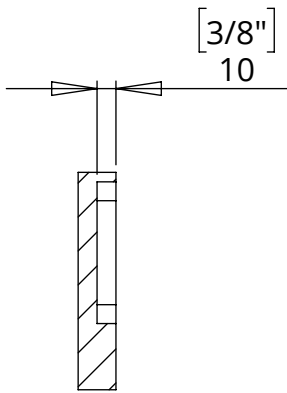
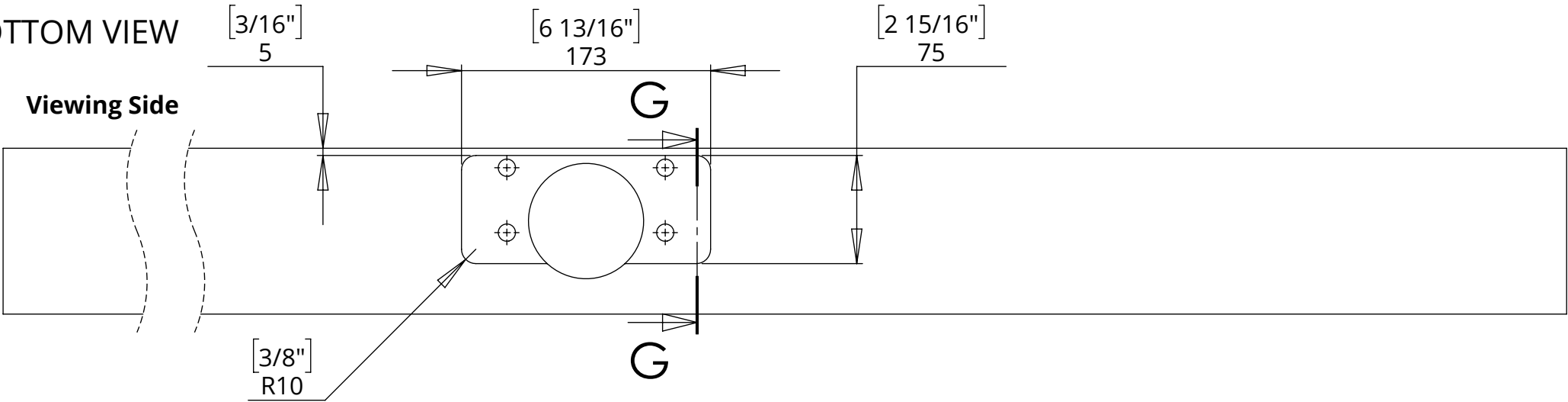
NOTE: A tapered Box Enclosure Lid creates a good fit in the Cabinet Aperture and helps the Box Enclosure to locate within the cabinet.



BASE PANEL TOP VIEW



BASE PANEL BOTTOM VIEW

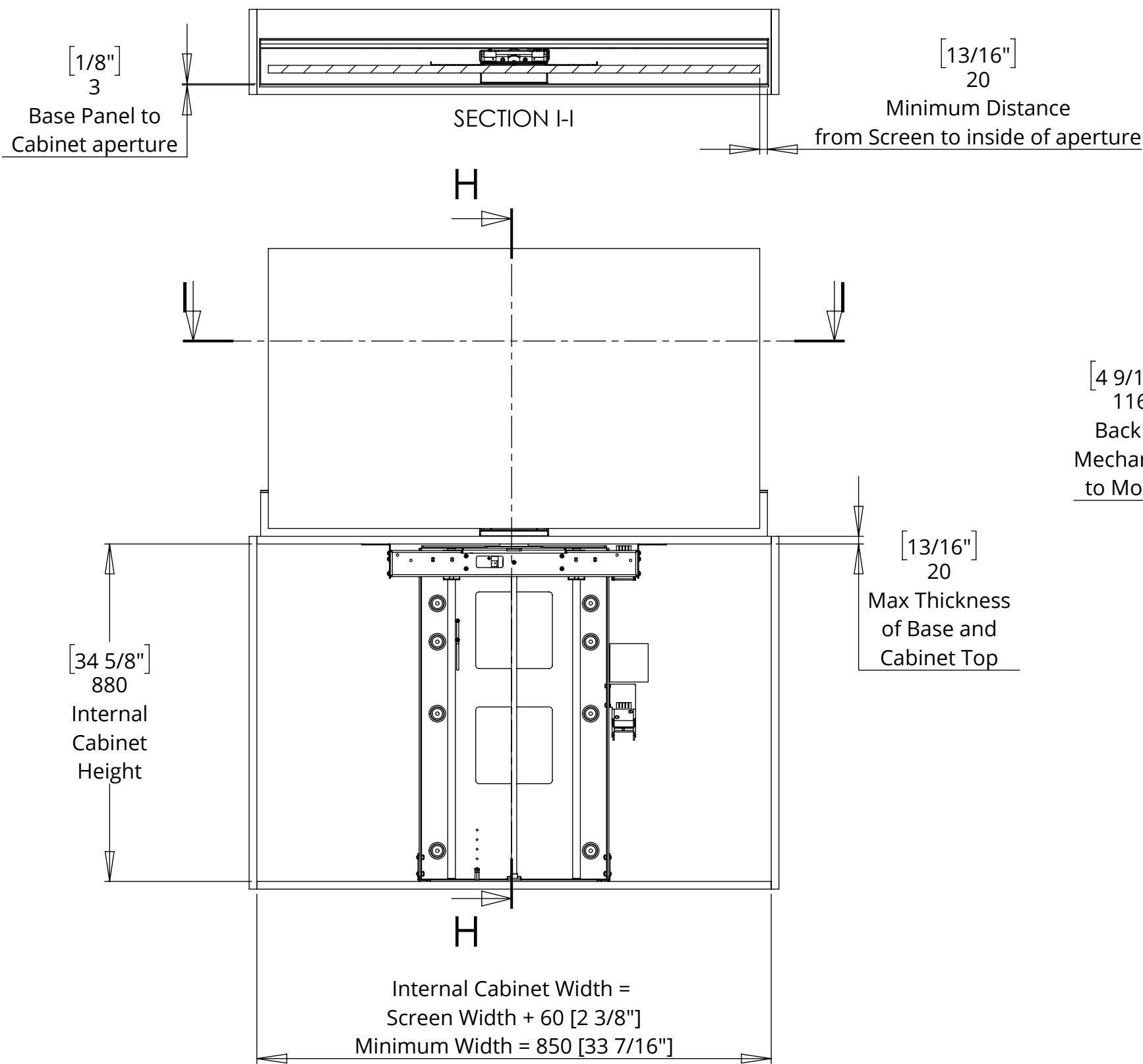


SECTION G-G

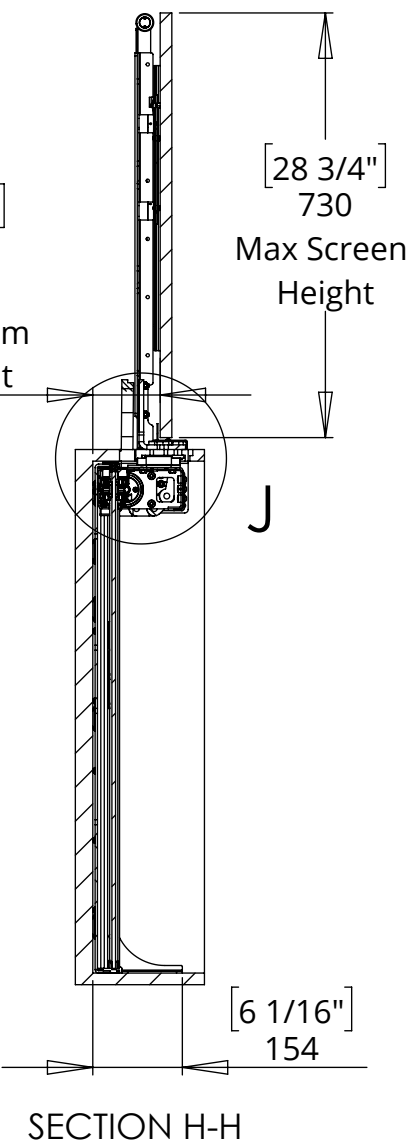
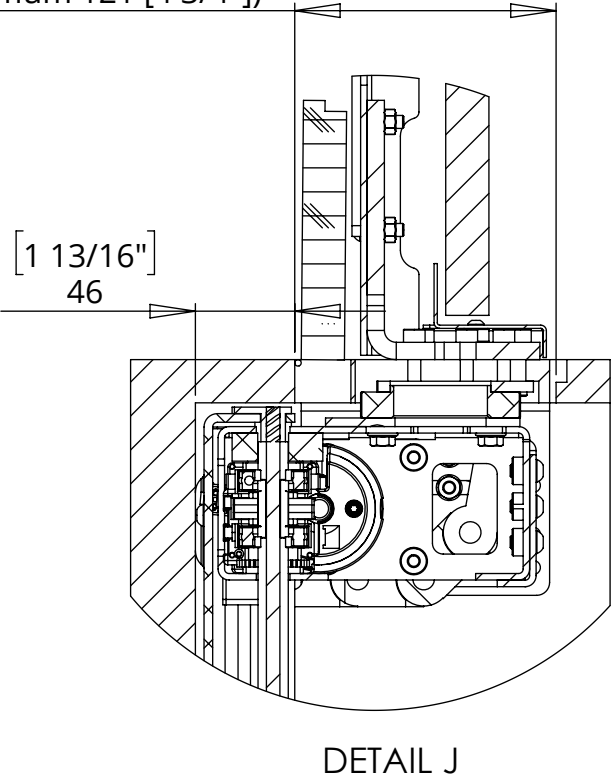
# LSM-BE/PF 5

## LIFT SYSTEM FOR BOX ENCLOSURE/PUSH FLAP

### LSM-PF 5 - MECHANISM UP - IN CABINET



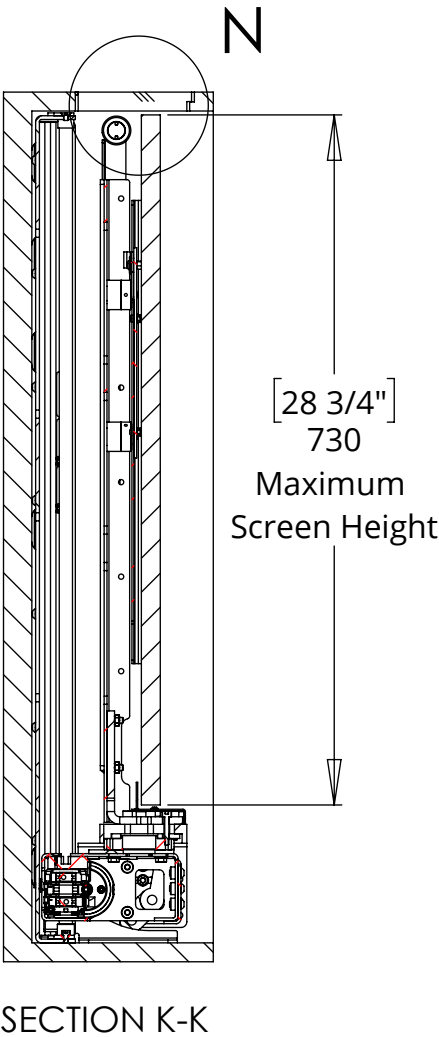
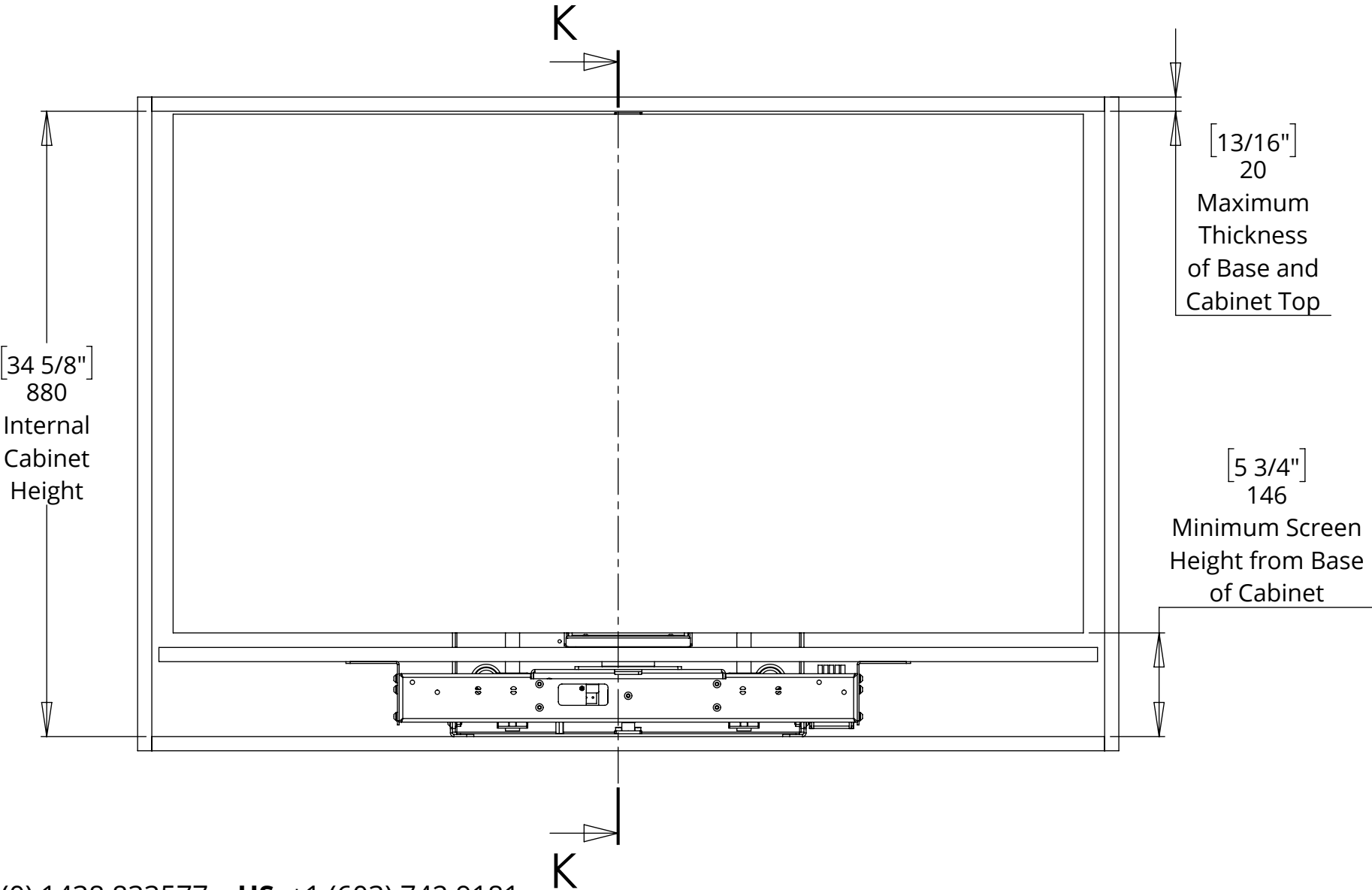
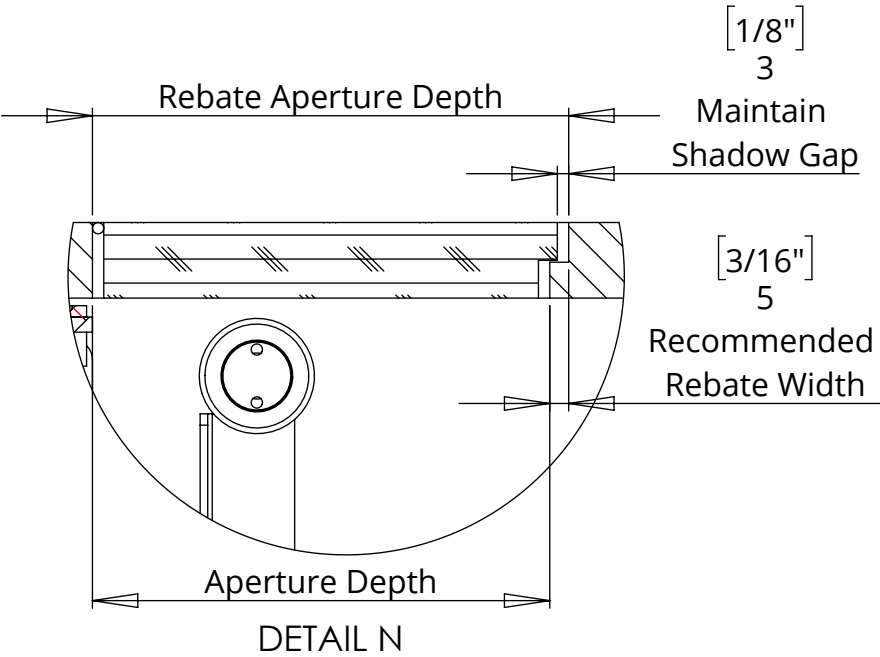
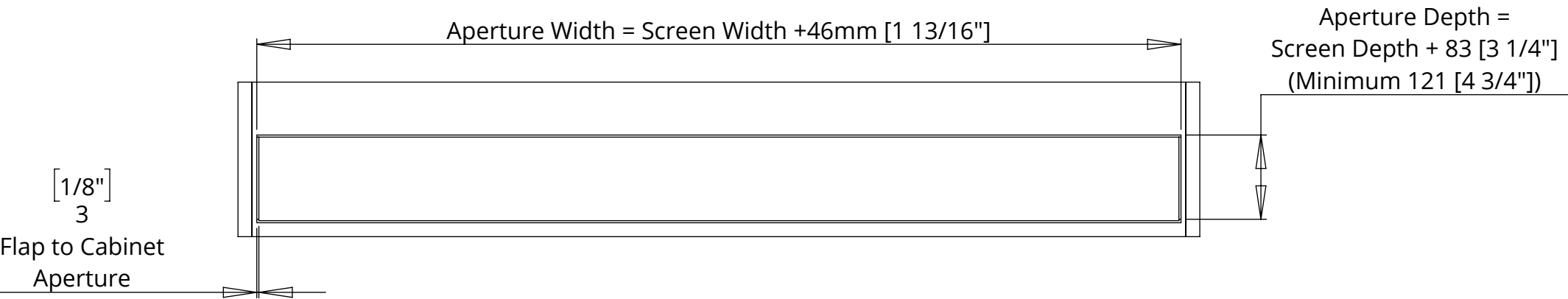
Aperture Depth =  
Screen Depth + 83  $\left[ 3 \frac{1}{4}'' \right]$   
(Minimum 121  $\left[ 4 \frac{3}{4}'' \right]$ )



# LSM-BE/PF 5

## LIFT SYSTEM FOR BOX ENCLOSURE/PUSH FLAP

LSM-PF 5 - MECHANISM DOWN - IN CABINET





# LSM-BE/PF 5

## LIFT SYSTEM FOR BOX ENCLOSURE/PUSH FLAP

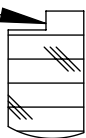


future automation

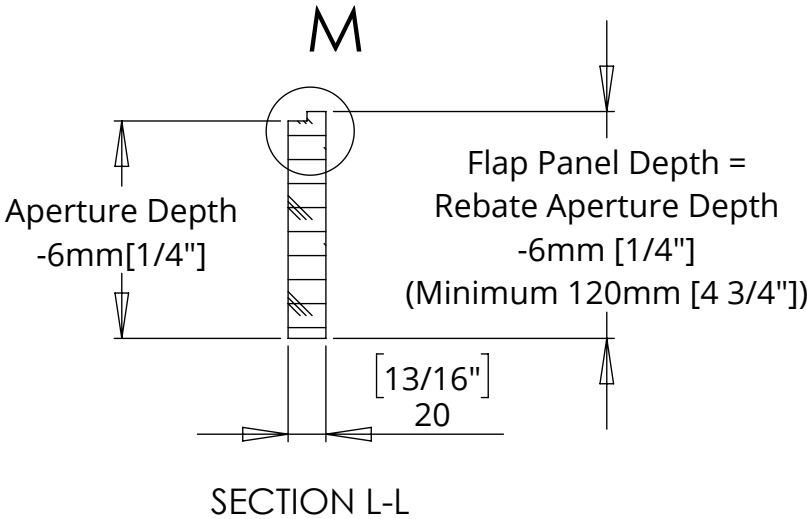
### PUSH FLAP BASE PANEL AND FLAP DETAILS

Flap depth dimensions are based on a 3mm thick piano hinge  
 Required flap dimensions may vary dependant on the hinge used

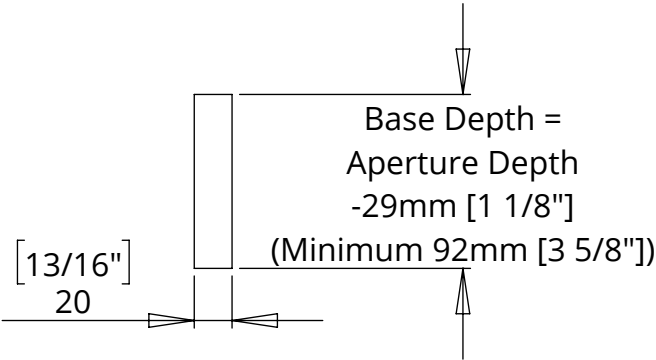
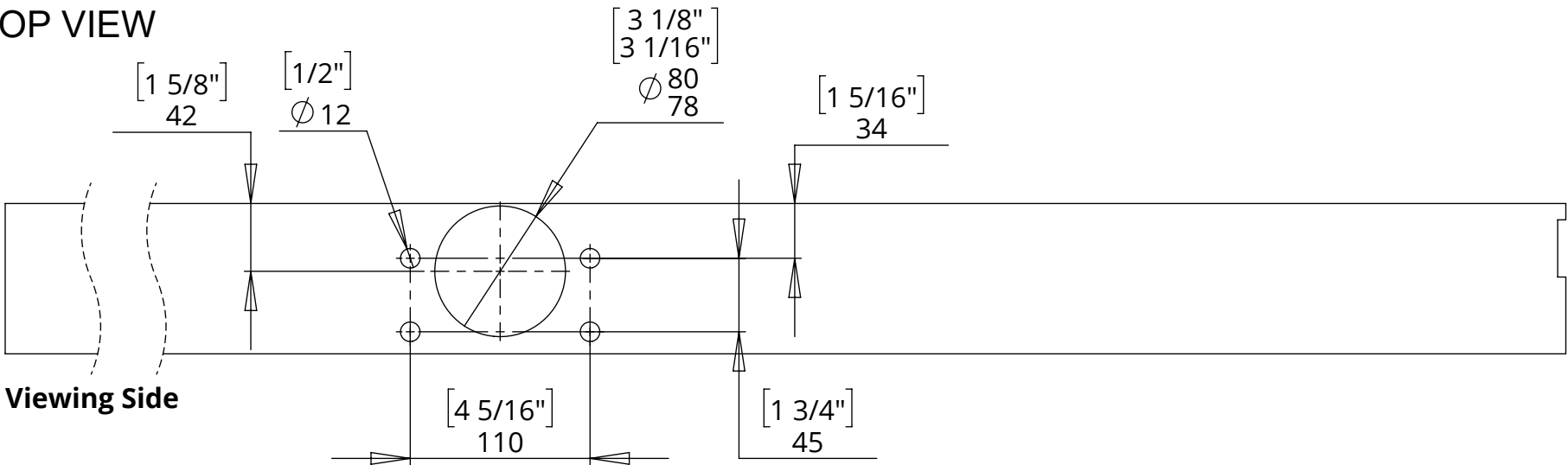
A step is required on the front of the flap to meet a step in the front edge of the cabinet aperture



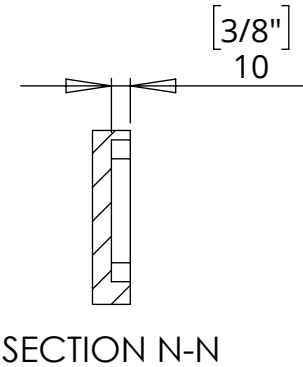
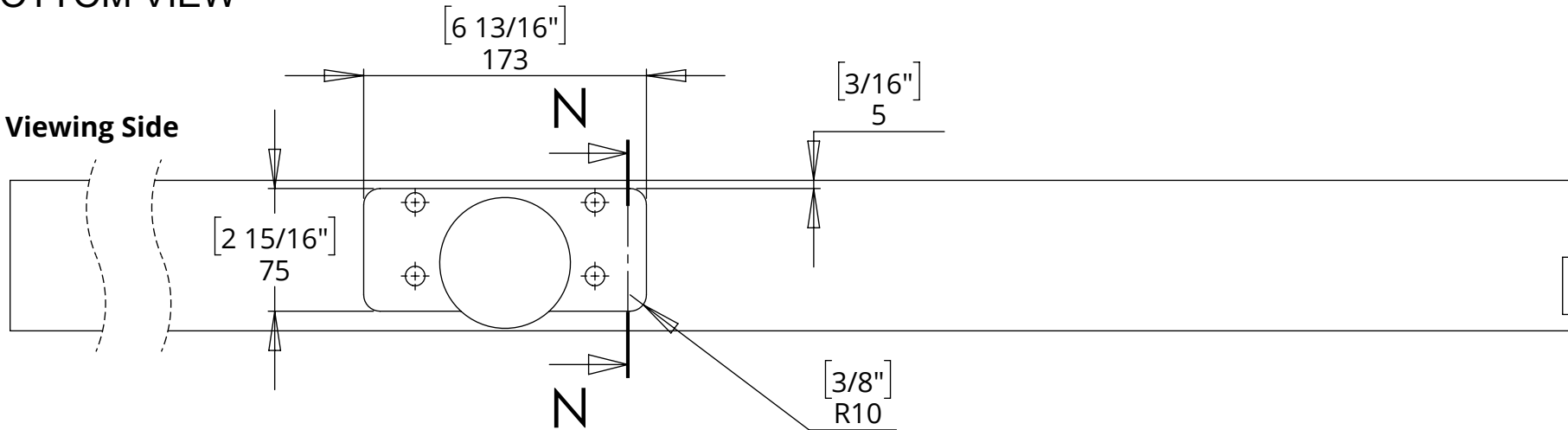
#### FLAP PANEL - BOTTOM VIEW



#### BASE PANEL - TOP VIEW



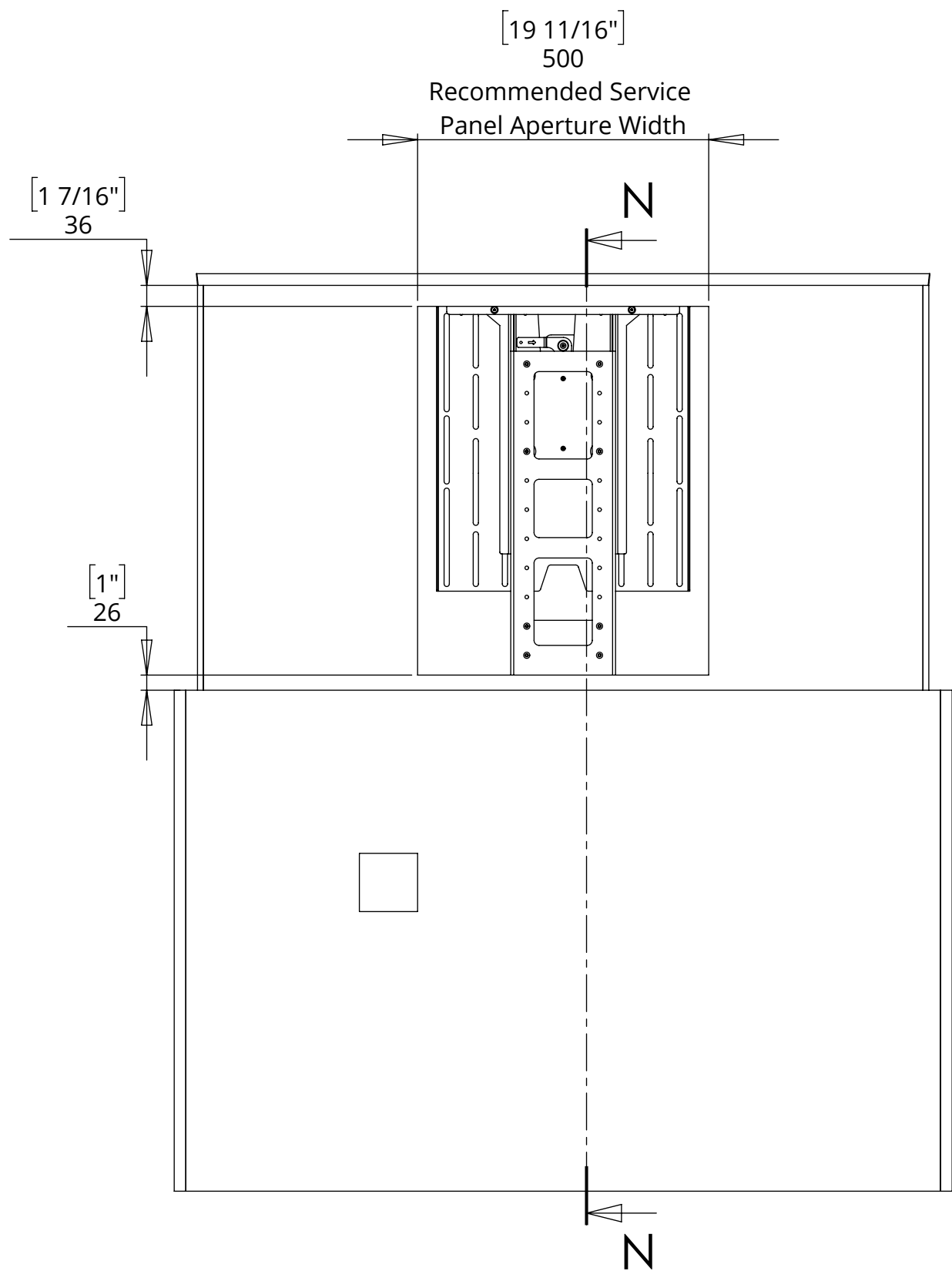
#### BASE PANEL - BOTTOM VIEW



# LSM-BE/PF 5

## LIFT SYSTEM FOR BOX ENCLOSURE

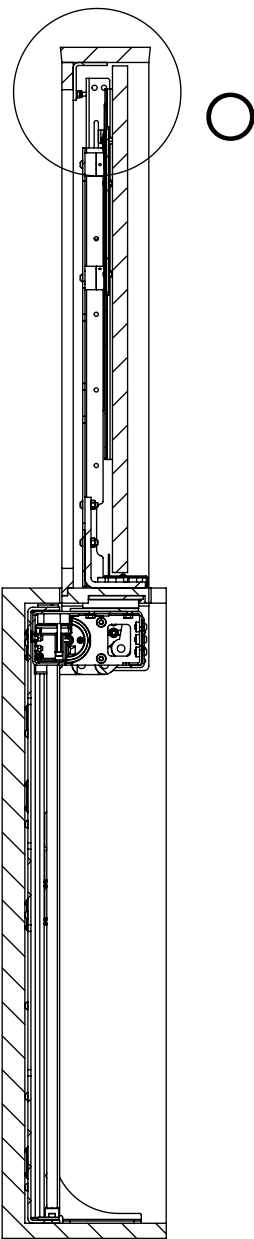
### BOX ENCLOSURE POSITION ADJUSTMENT



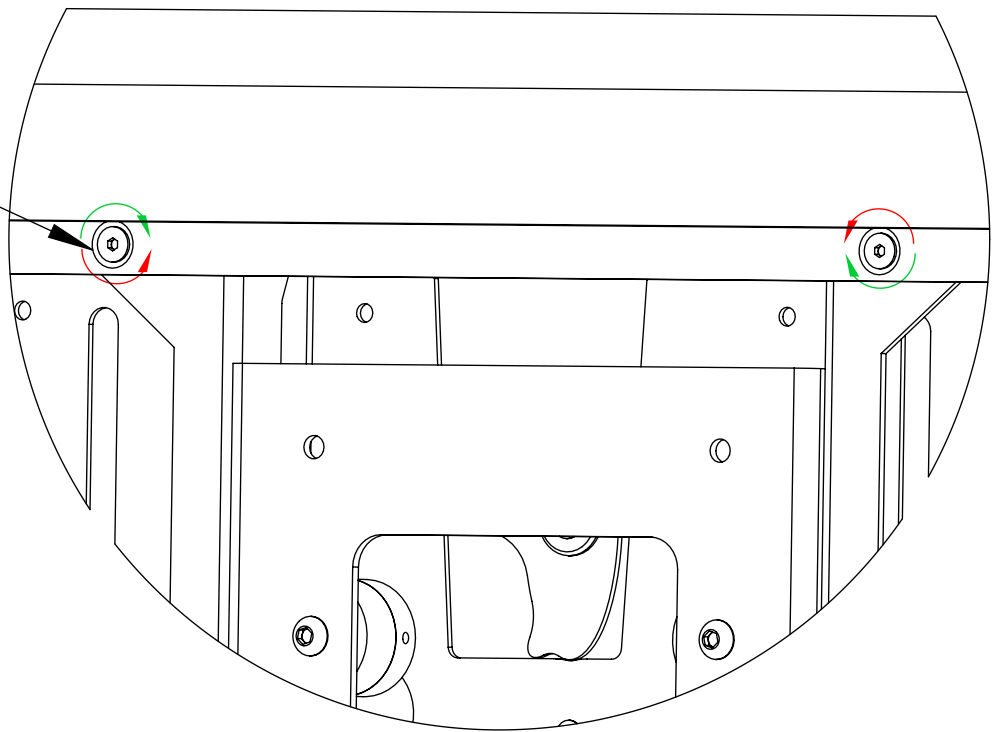
The countersink bolts enable fine tuning the position of the box enclosure relative to the uprights



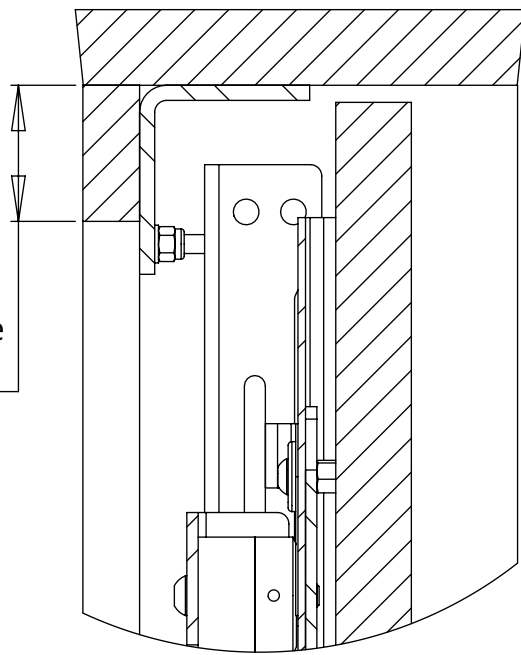
±5mm Adjustment



SECTION N-N



$1 \frac{7}{16}"$  (36 mm)  
Required distance between top of aperture and bottom of lid



DETAIL O

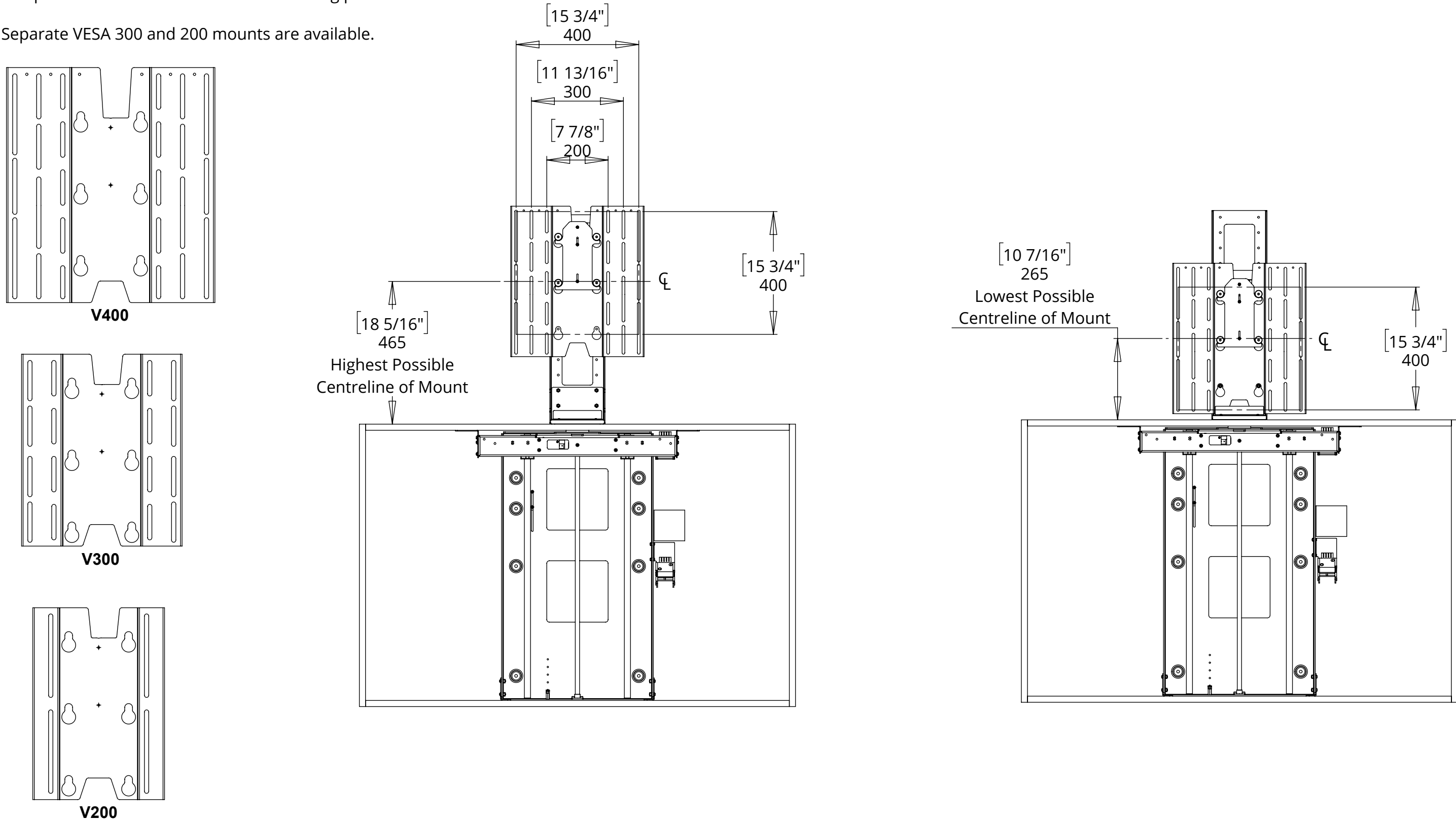
# LSM-BE/PF 5

## LIFT SYSTEM FOR BOX ENCLOSURE/PUSH FLAP

### SCREEN MOUNT ADJUSTABILITY

A standard adjustable height VESA 400 mount is included. This is also compatible with VESA 300 and 200 mounting patterns

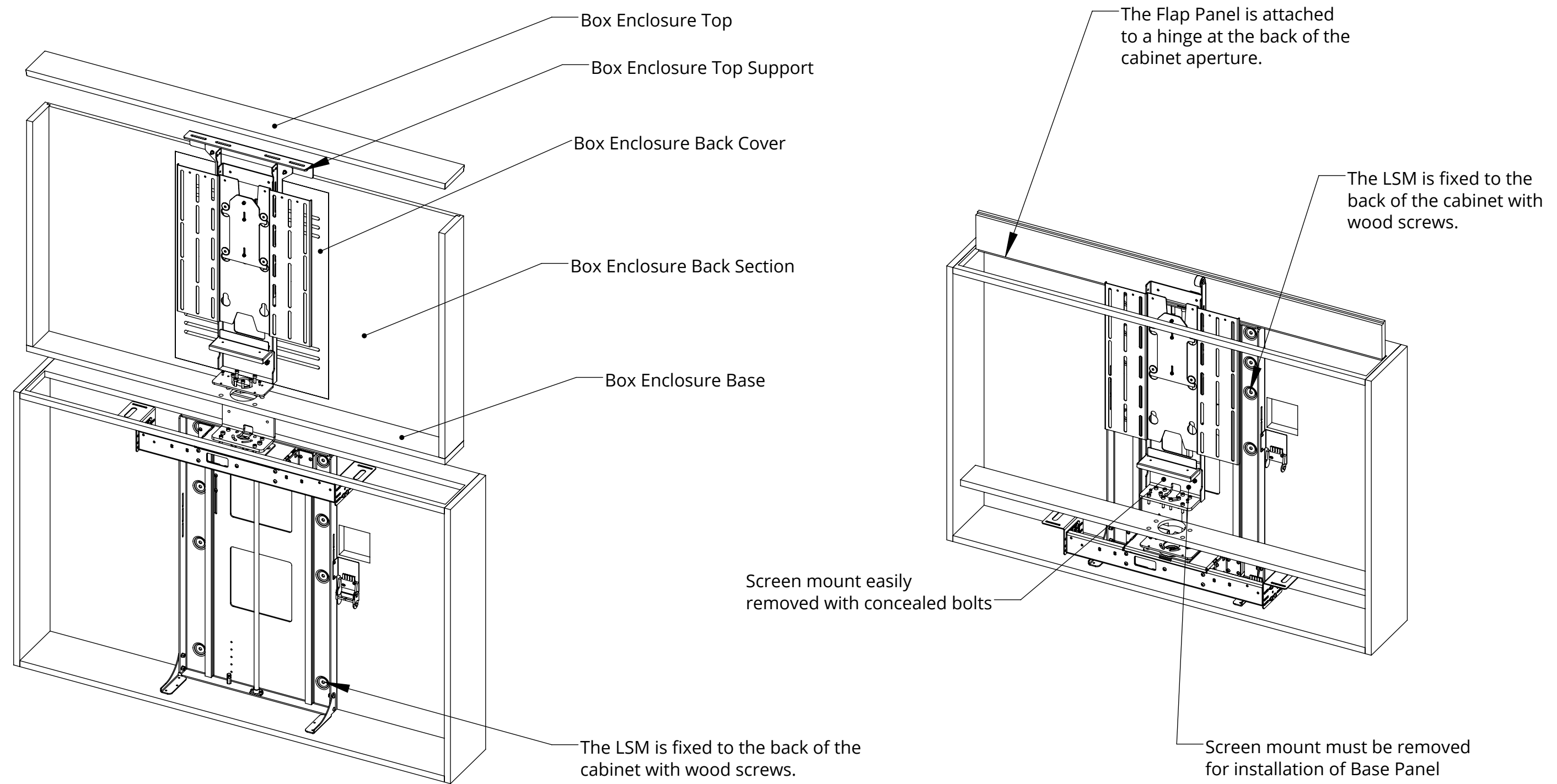
Separate VESA 300 and 200 mounts are available.



# LSM-BE/PF 5

## LIFT SYSTEM FOR BOX ENCLOSURE/PUSH FLAP

### MECHANISM INSTALLTION OVERVIEW

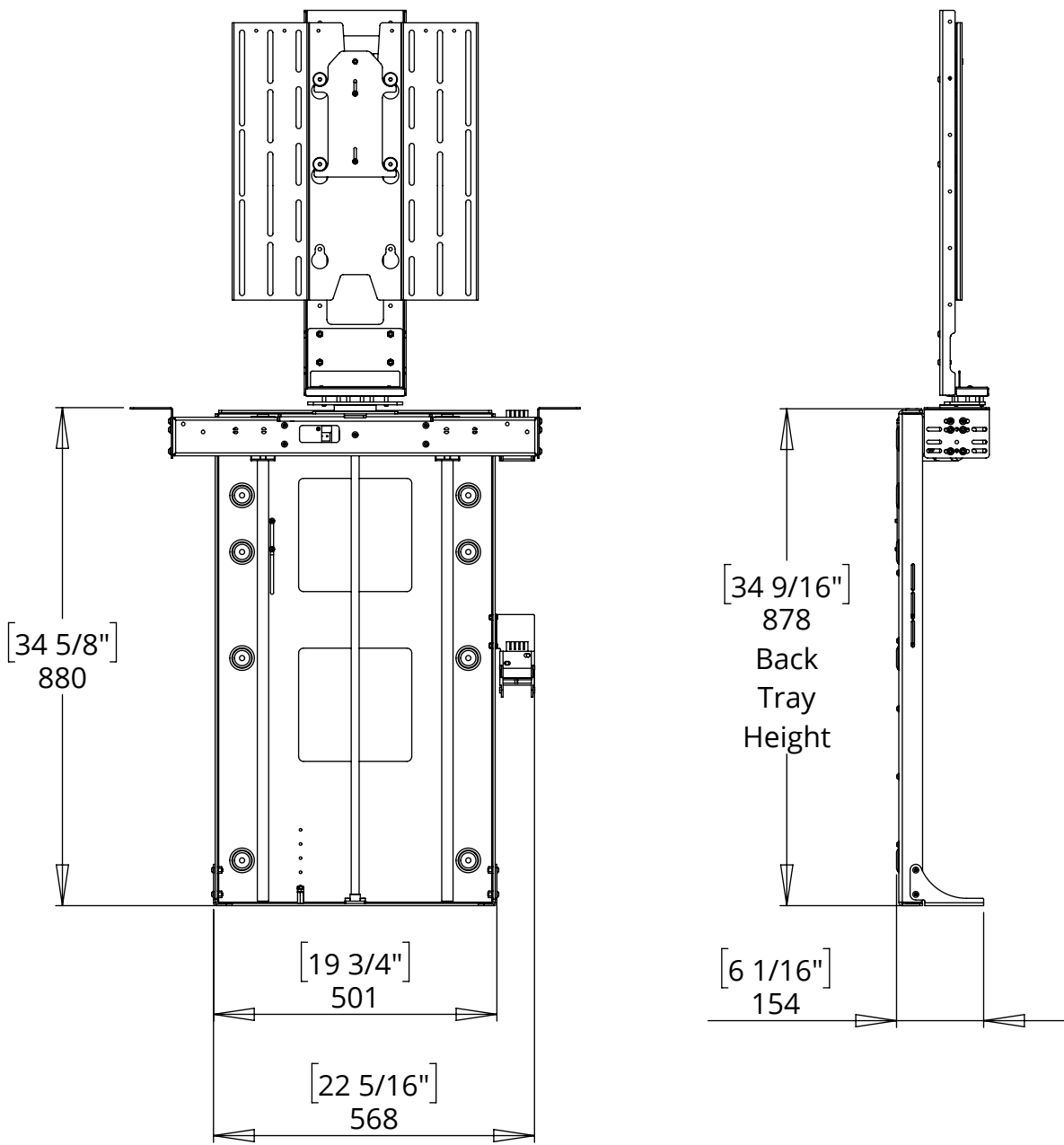


# LSM-BE/PF 5

## LIFT SYSTEM FOR BOX ENCLOSURE/PUSH FLAP

### OVERALL MECHANISM DIMENSIONS

MECHANISM - UP POSITION



MECHANISM - DOWN POSITION

