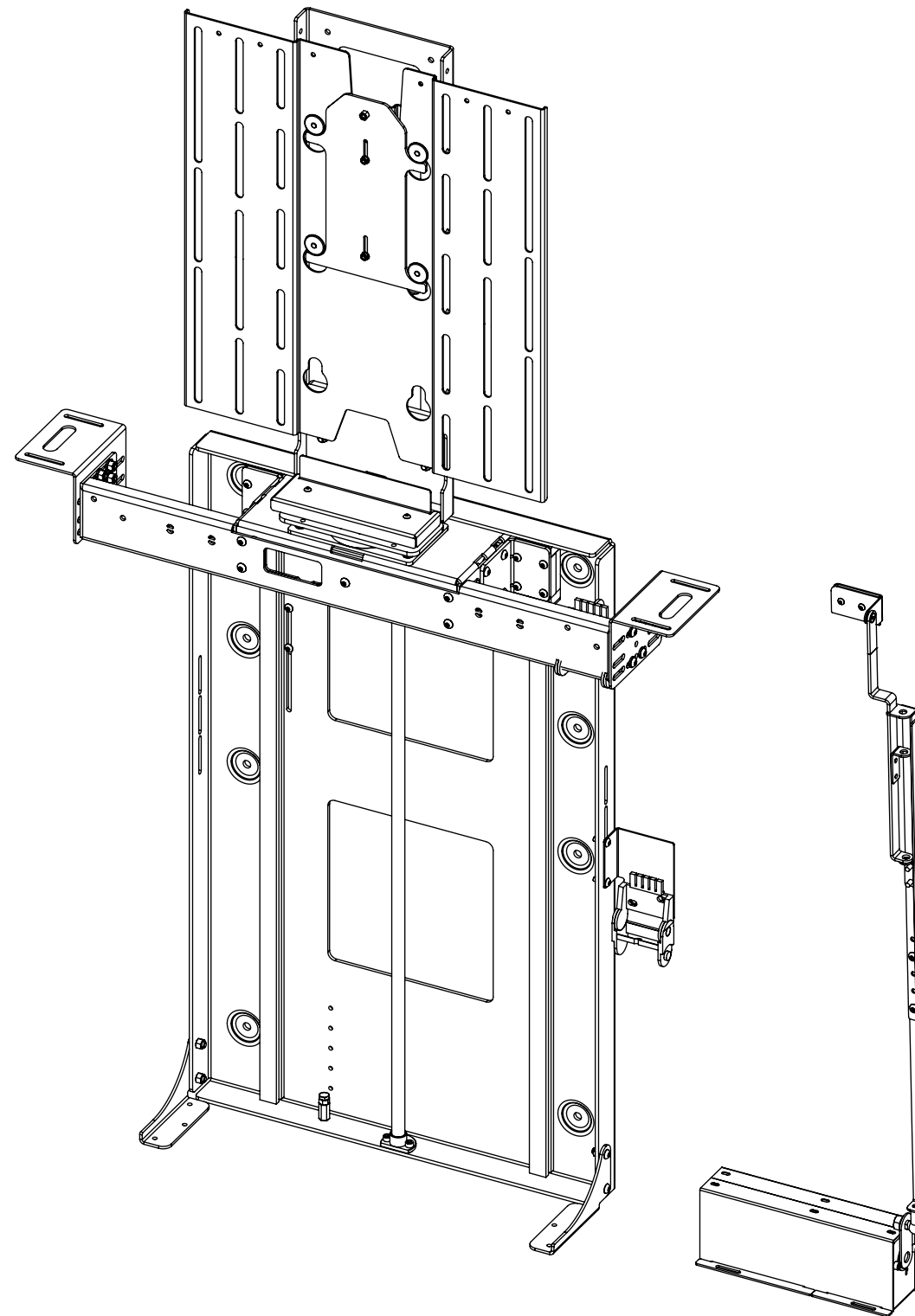


LSM-EFA-4

LIFT SYSTEM MEDIUM WITH ELECTRIC FLAP



future automation



LSM-EFA-4

LIFT SYSTEM MEDIUM WITH ELECTRIC FLAP

SPECIFICATION	MEASUREMENTS
Maximum Screen Height	665mm (26 3/16")
Maximum Lifting Capacity	50Kg (110lb)
Maximum Lifting Capacity (Marine)	30Kg (66lb)
Internal Cabinet Height	820mm (32 5/16")
Decibel Rating	52 dB
Packaging Dimensions	1020 x 850 x 330mm (40 3/16 x 33 7/16 x 13")
Shipping Weight	34Kg (75lb)
Movement Type	Motorised
Power Supply Required	110V - 240V AC
Power Consumption	250 - 500W
Power Consumption Standby	3W
Mounting Patterns Supported	VESA 400, 300, 200 W x 400, 300, 200 H
Control Options	IR Remote, RS232, Contact Closure, RF Available
Product Options / Features	Specific B&O and Loewe mounts / adapters, Custom RAL paint finishes
Package Contents	Mechanism, IR remote control
Marine Suitable	Yes

LSM-EFA-4

LIFT SYSTEM MEDIUM WITH ELECTRIC FLAP



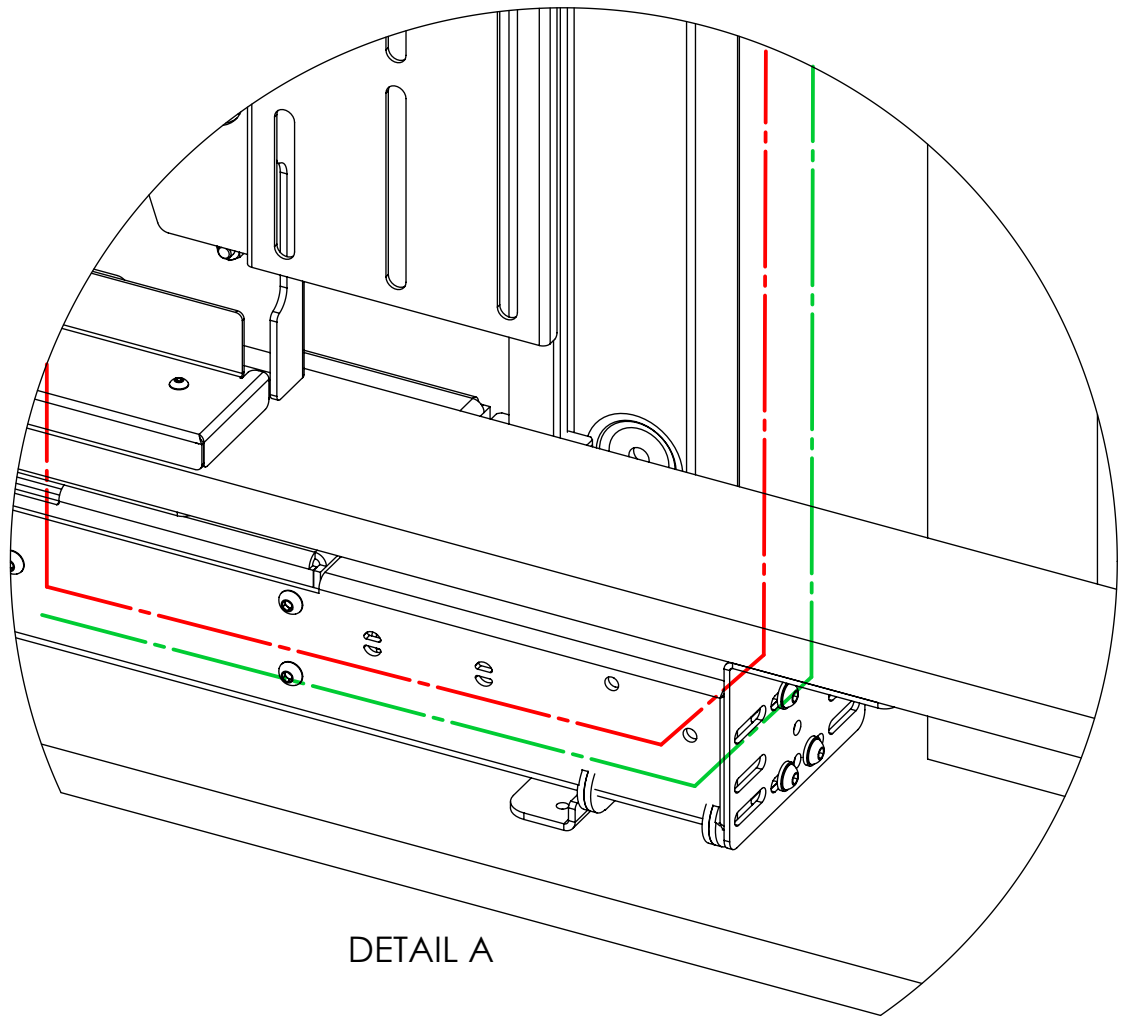
future automation

CABLE ROUTING

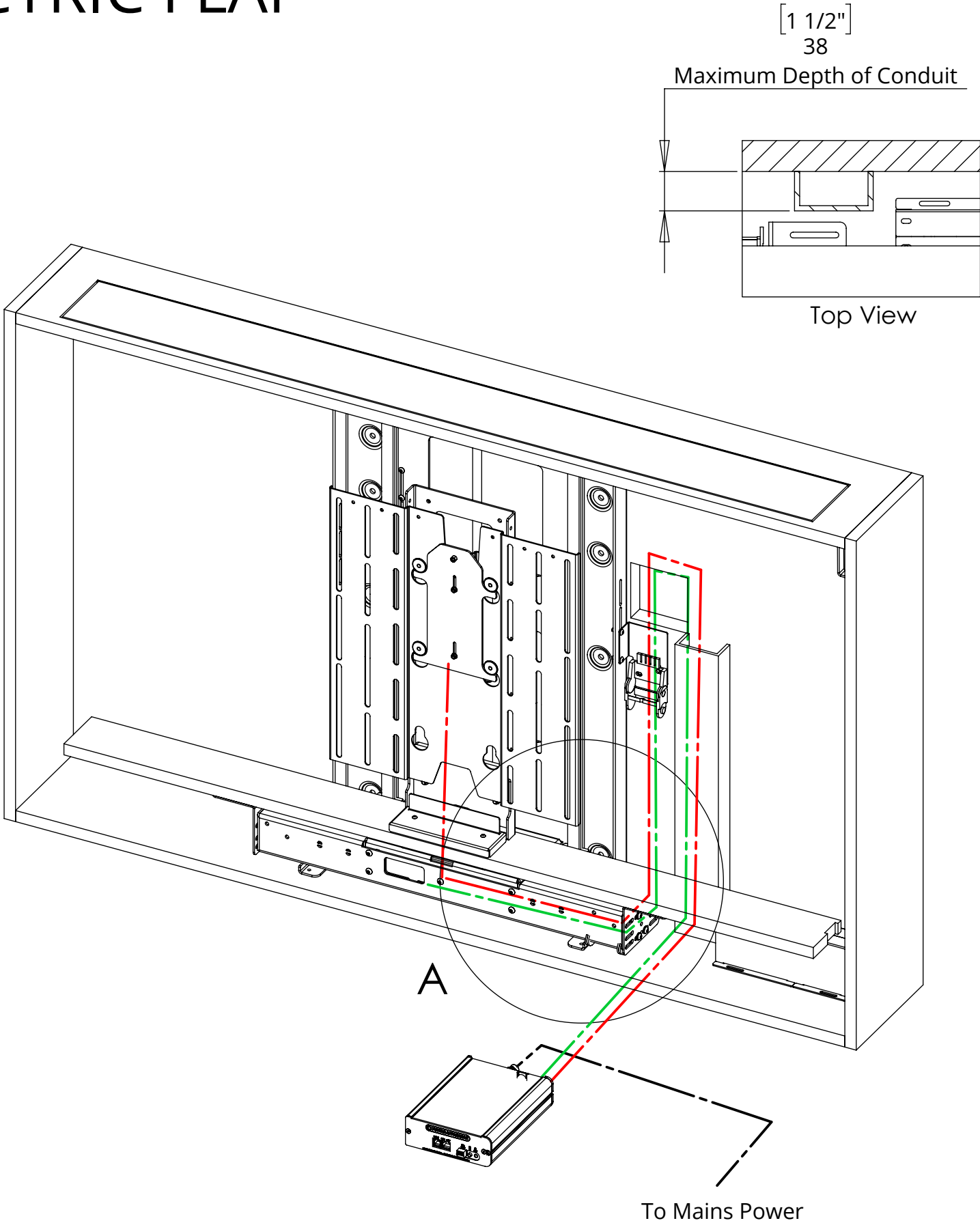
The LSM has an easily removable Mount Cover that cables from the screen can be routed underneath. Cables then travel through the centre of the Mount Boss and into the beam. Cables must be routed carefully to prevent any interference with the LSM beam as it operates.

Screen and Mechanism cables should be routed to a control box outside of the cabinet via an opening in the back of the cabinet or a conduit leading to the bottom.

- SCREEN CABLES
- MECHANISM CABLES
- POWER CABLES



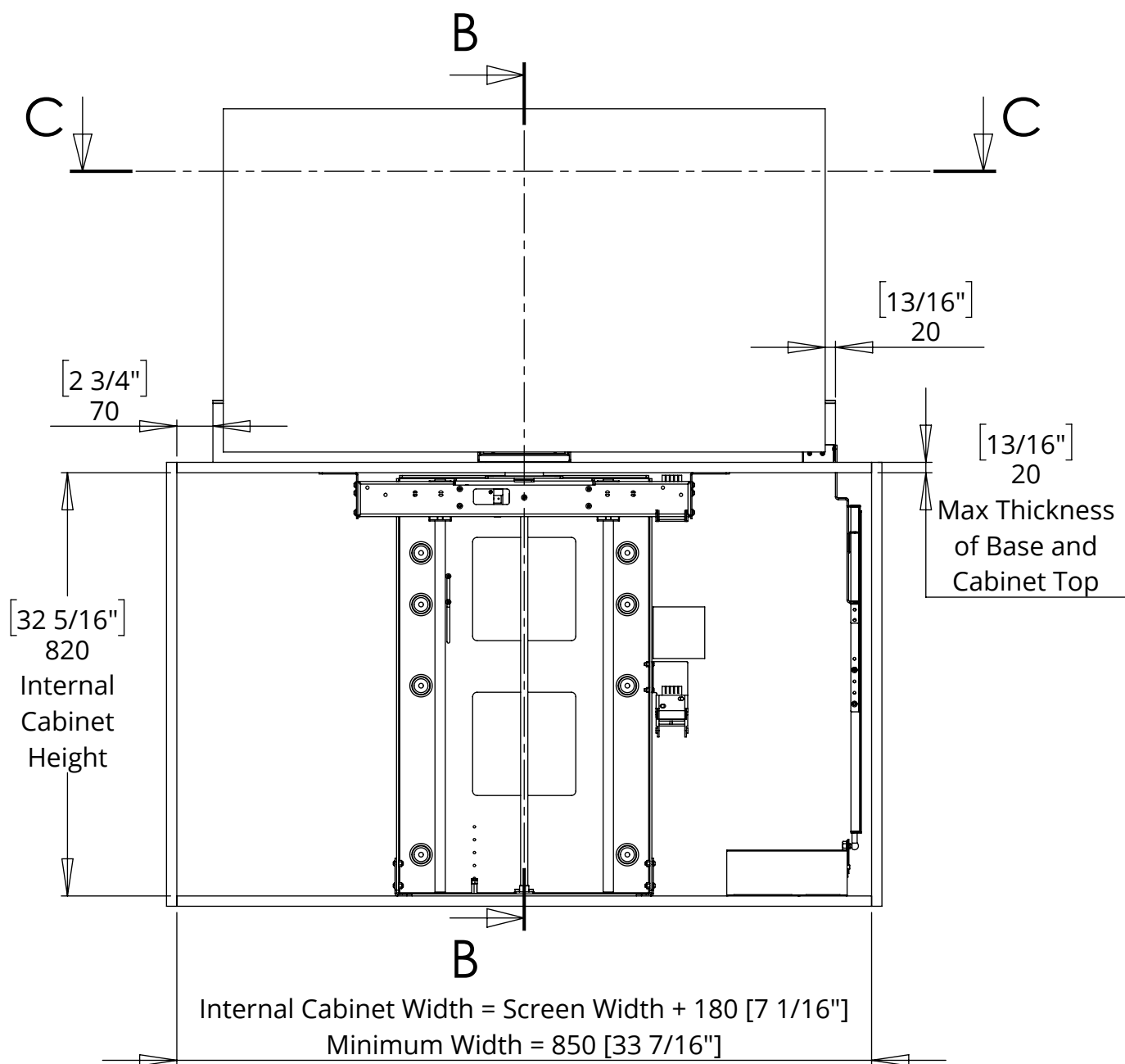
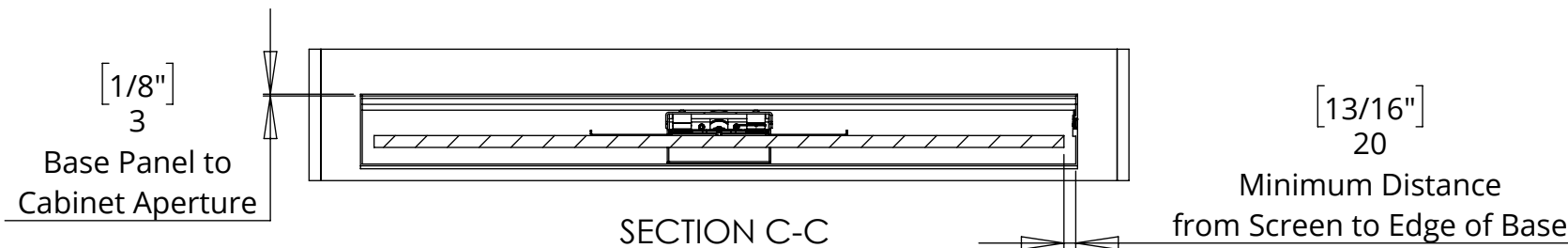
DETAIL A



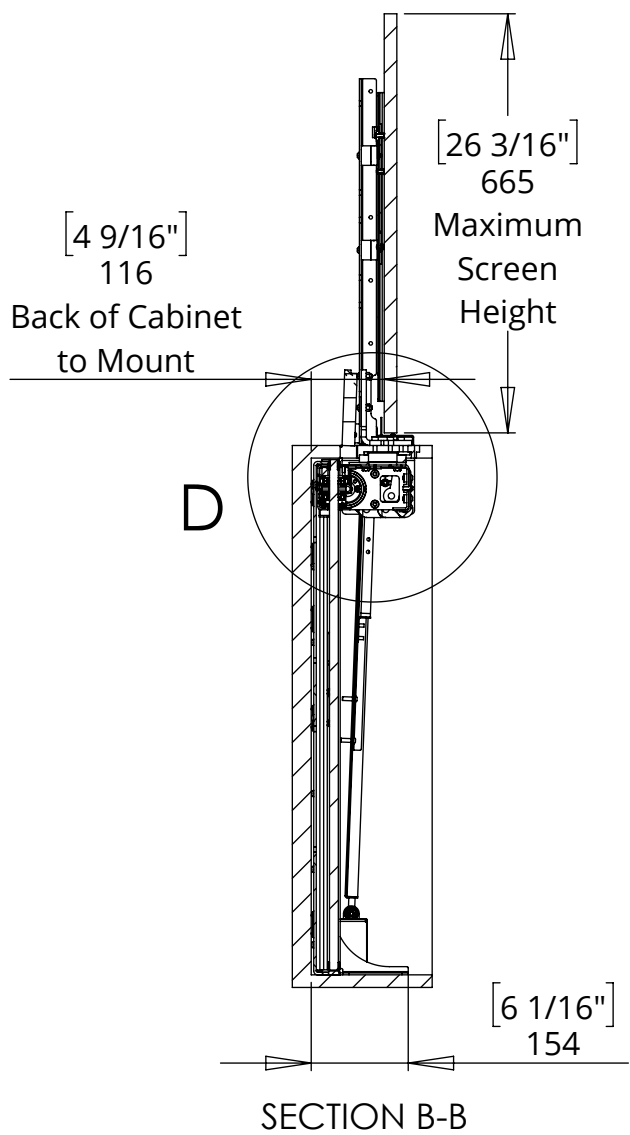
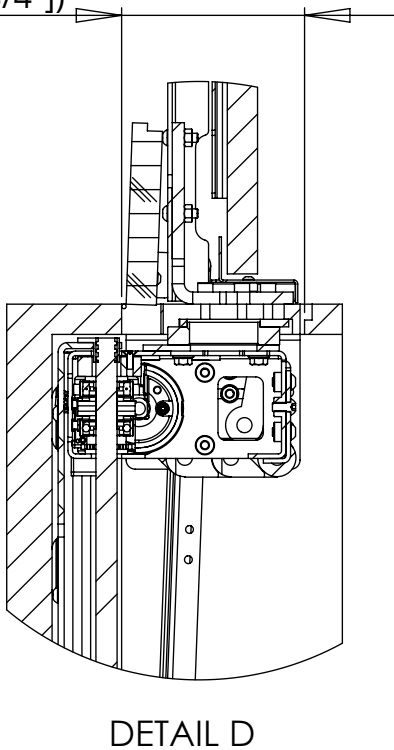
LSM-EFA-4

LIFT SYSTEM MEDIUM WITH ELECTRIC FLAP

MECHANISM UP - IN CABINET



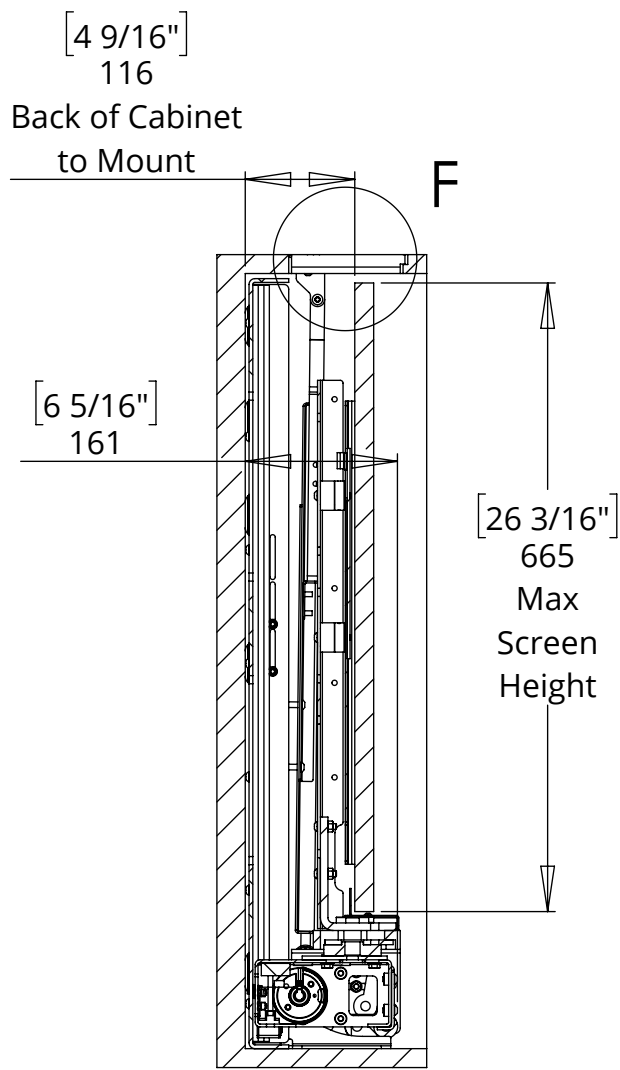
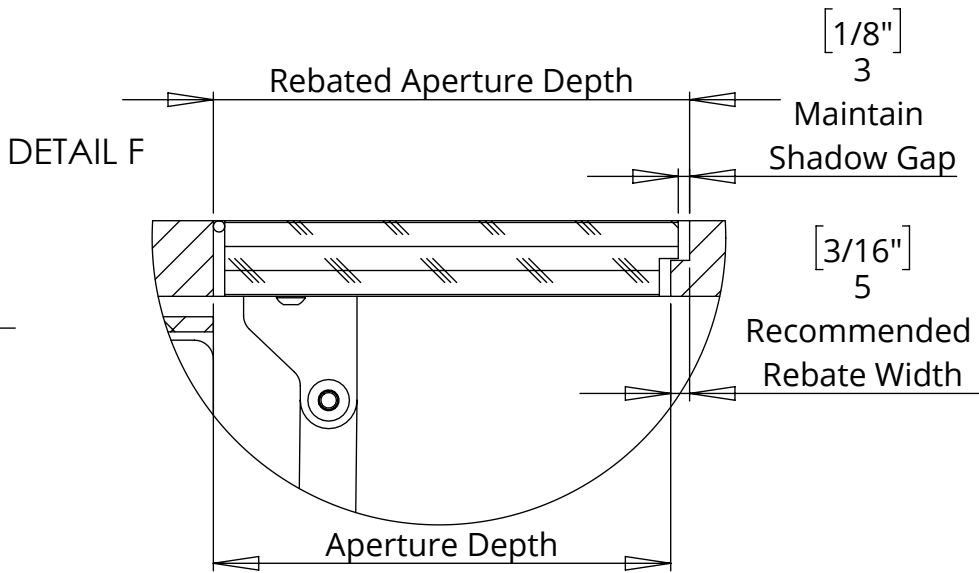
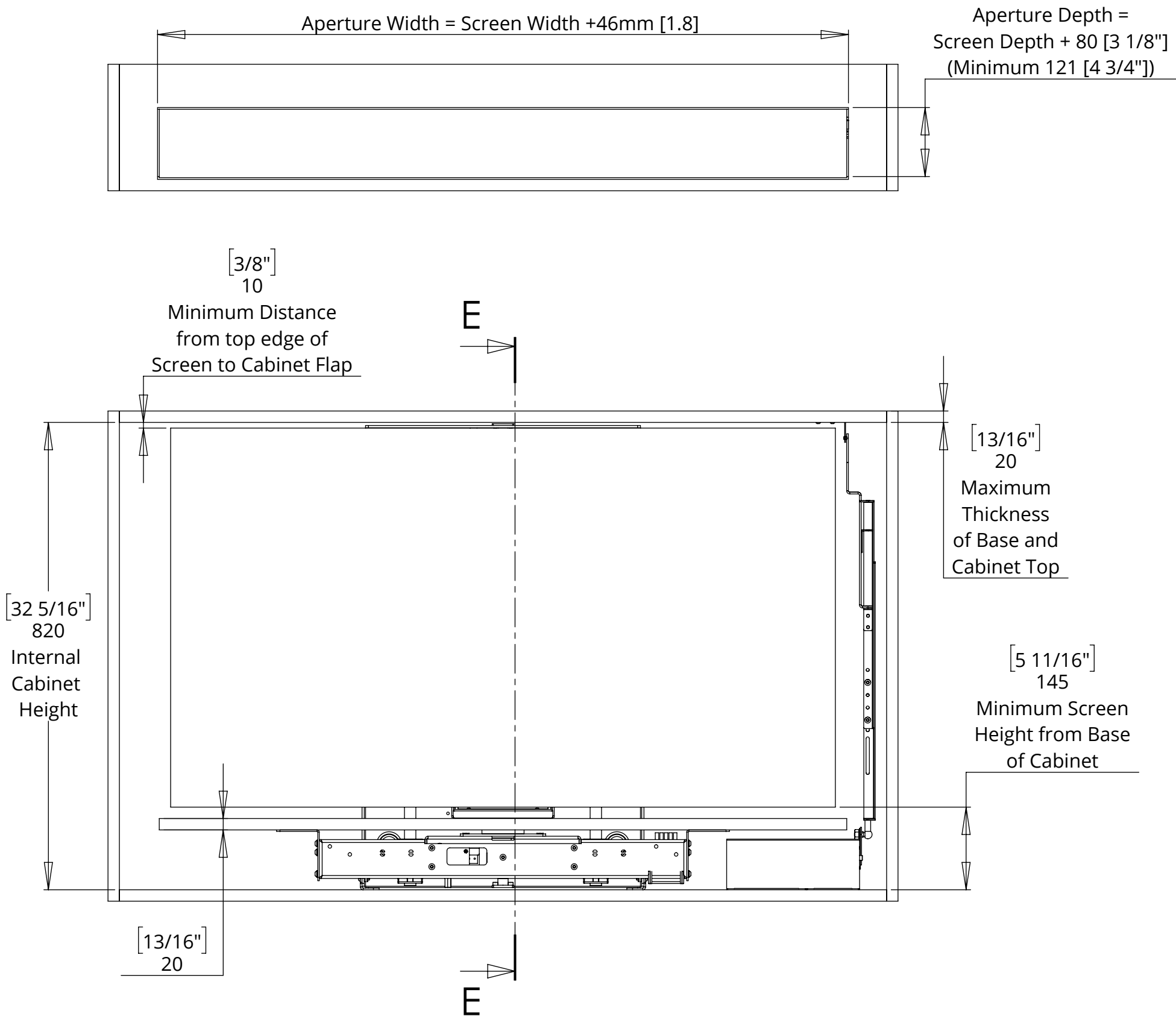
Aperture Depth =
Screen Depth + 80 $\left[3 \frac{1}{8}\right]$
(Minimum 121 $\left[4 \frac{3}{4}\right]$)



LSM-EFA-4

LIFT SYSTEM MEDIUM WITH ELECTRIC FLAP

MECHANISM DOWN - IN CABINET



SECTION E-E

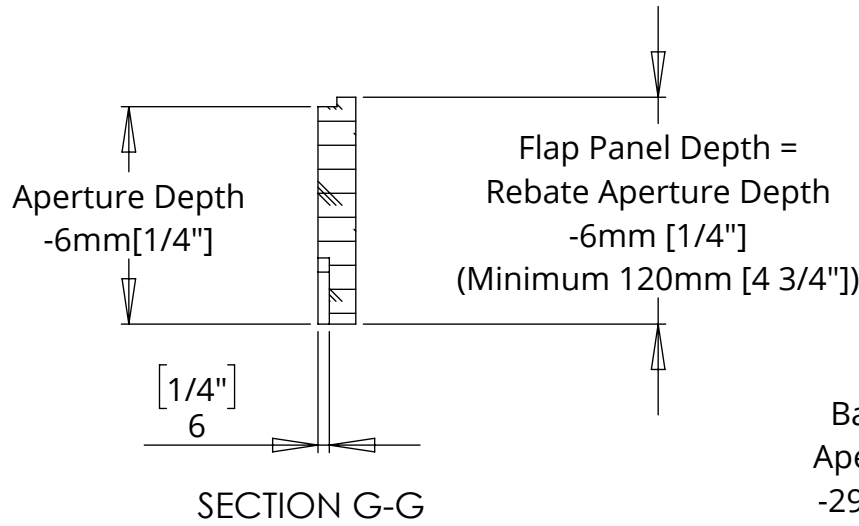
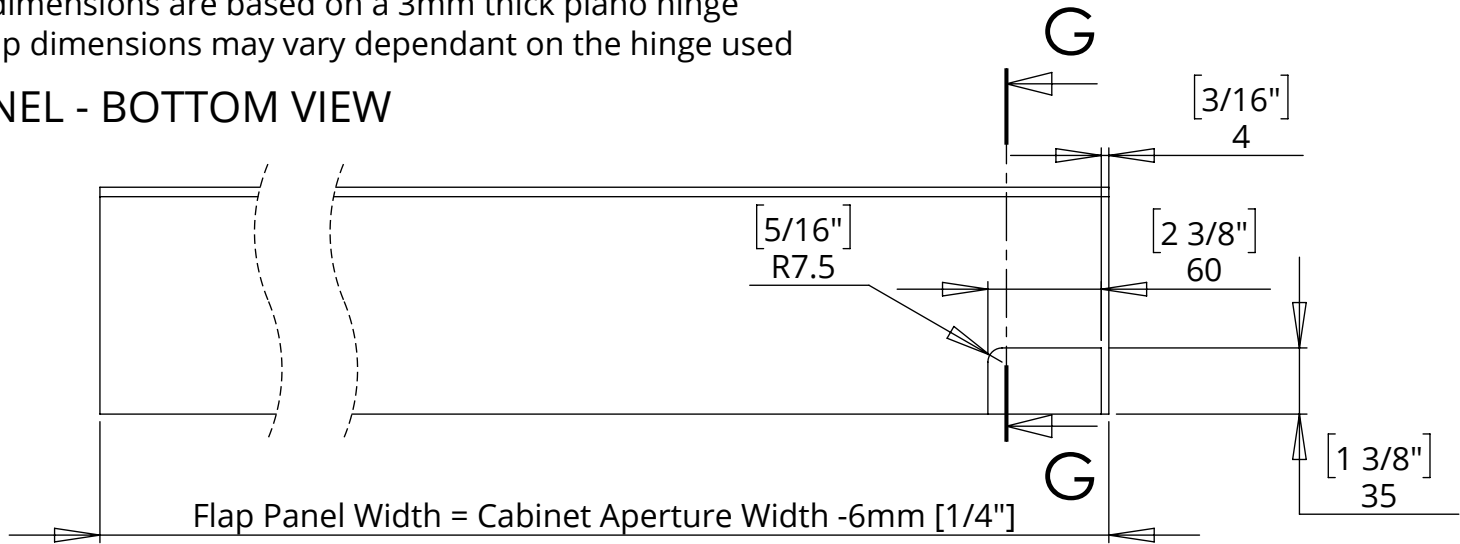
LSM-EFA 4

LIFT SYSTEM WITH ELECTRIC FLAP

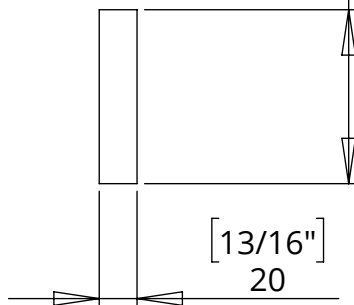
BASE PANEL AND FLAP DETAILS

Flap depth dimensions are based on a 3mm thick piano hinge
Required flap dimensions may vary dependant on the hinge used

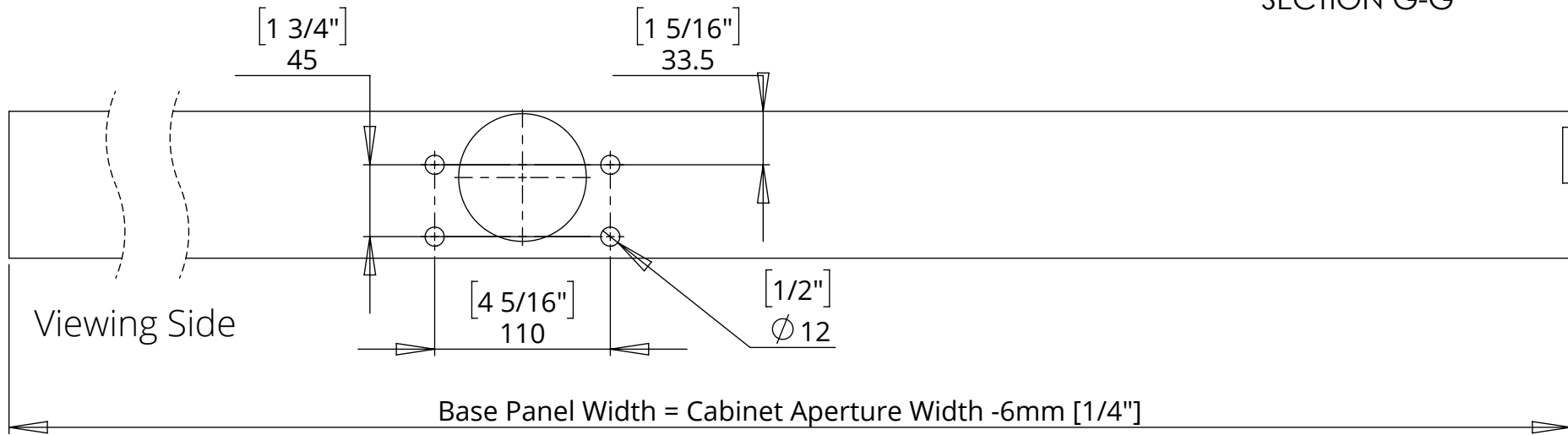
FLAP PANEL - BOTTOM VIEW



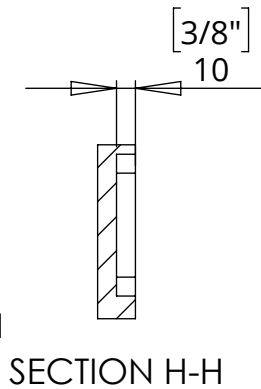
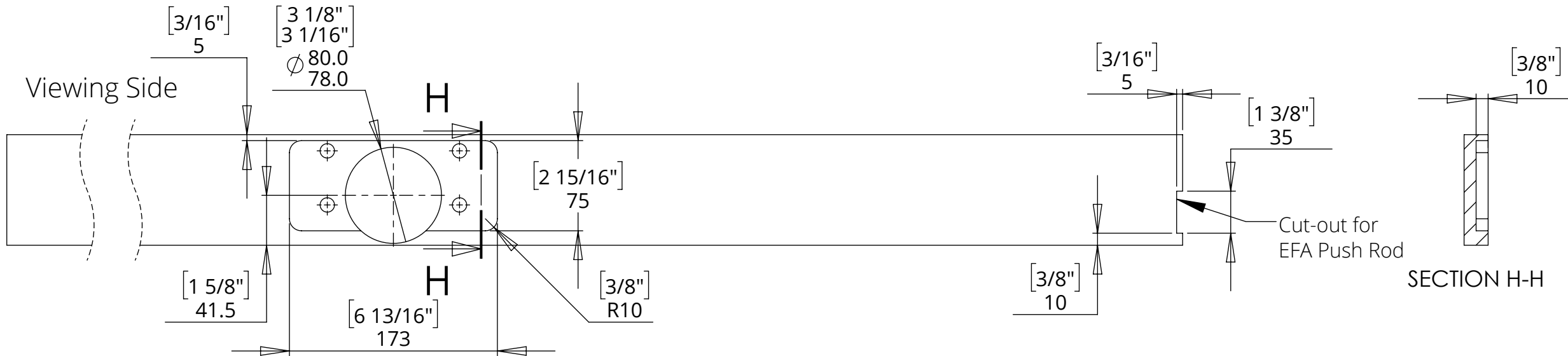
Base Depth =
Aperture Depth
- 29mm [$1\frac{1}{8}$ "]
(Minimum 92mm [$3\frac{5}{8}$ "])



BASE PANEL - TOP VIEW



BASE PANEL - BOTTOM VIEW



LSM-EFA-4

LIFT SYSTEM MEDIUM WITH ELECTRIC FLAP

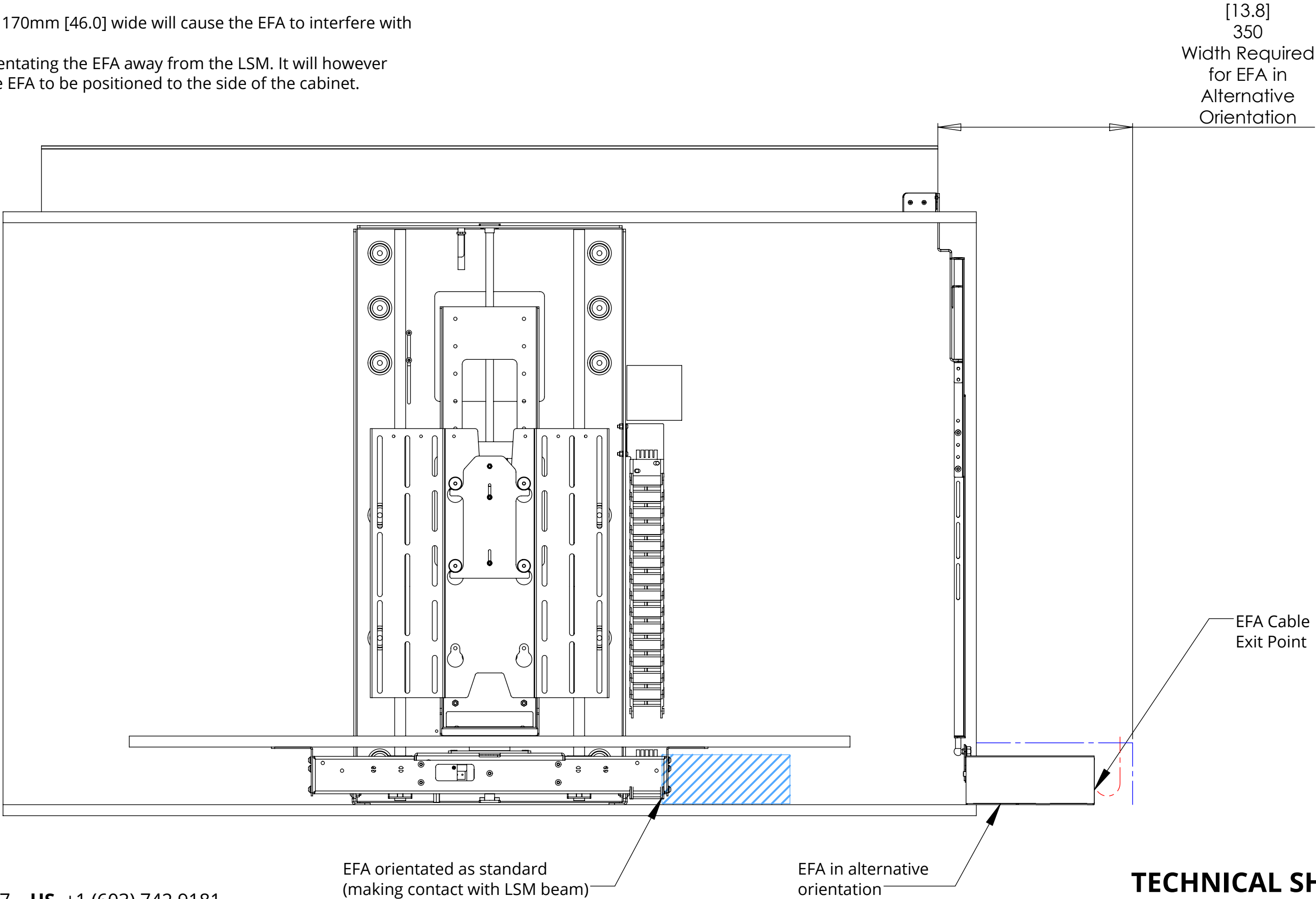


future automation

POSITIONING THE EFA TO ACCOMMODATE SMALLER SCREENS

A Base Panel of less than 1170mm [46.0] wide will cause the EFA to interfere with the LSM beam.

This can be avoided by orientating the EFA away from the LSM. It will however require more space for the EFA to be positioned to the side of the cabinet.



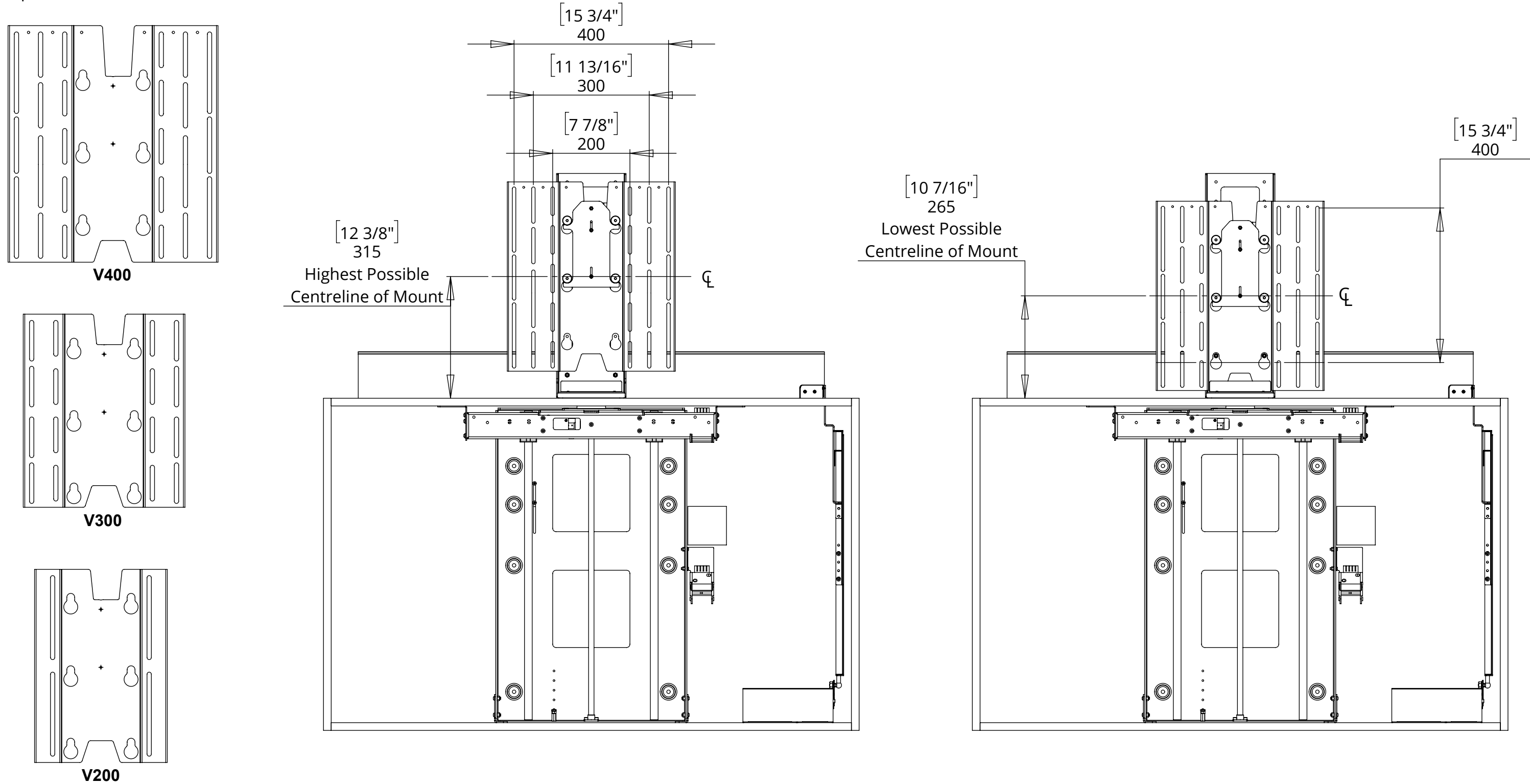
LSM-EFA-4

LIFT SYSTEM MEDIUM WITH ELECTRIC FLAP

SCREEN MOUNT ADJUSTABILITY

A standard adjustable height VESA 400 mount is included. This is also compatible with VESA 300 and 200 mounting patterns

Separate VESA 300 and 200 mounts are available.



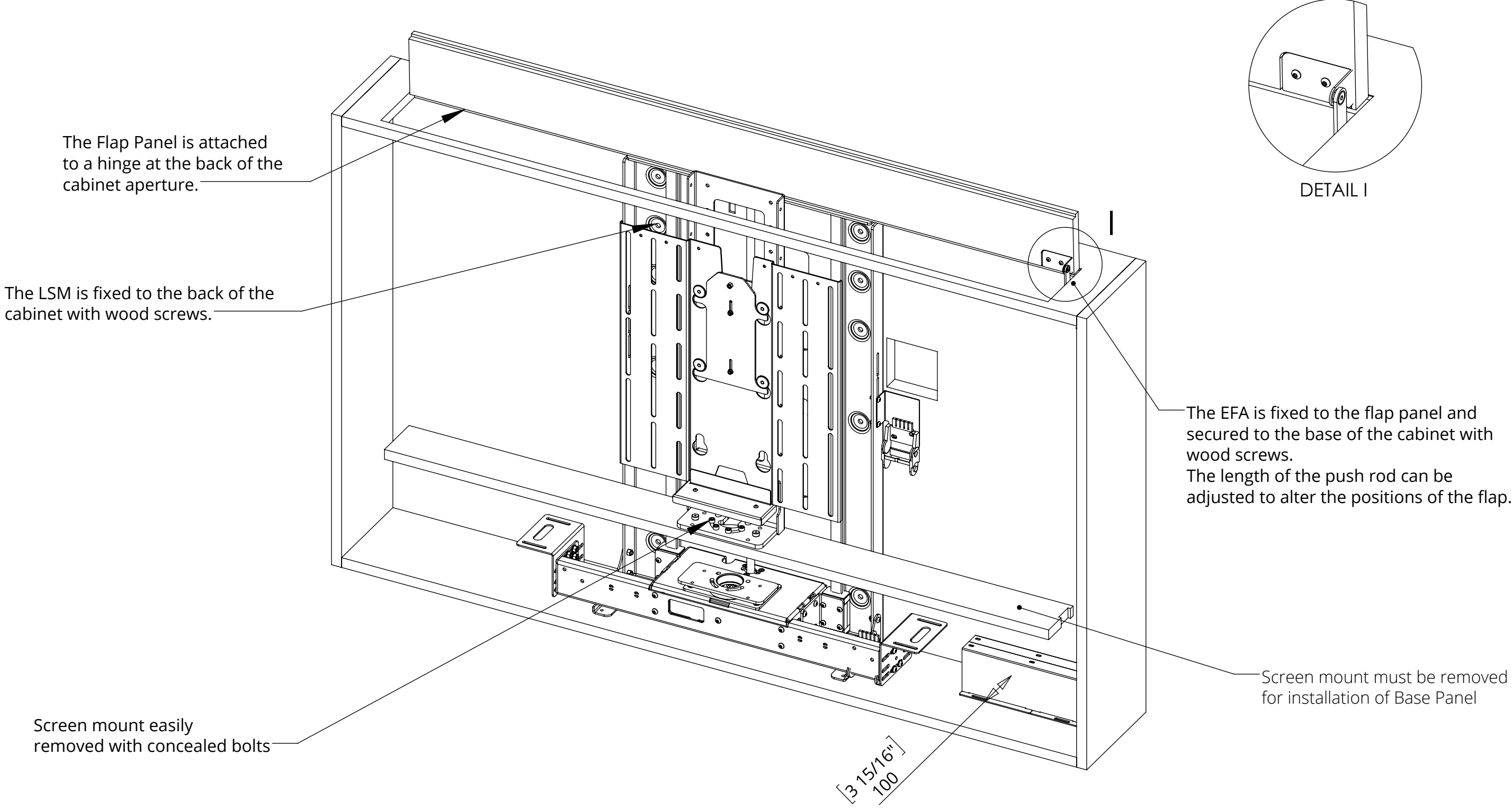
LSM-EFA-4

LIFT SYSTEM MEDIUM WITH ELECTRIC FLAP



future automation

MECHANISM INSTALLATION OVERVIEW

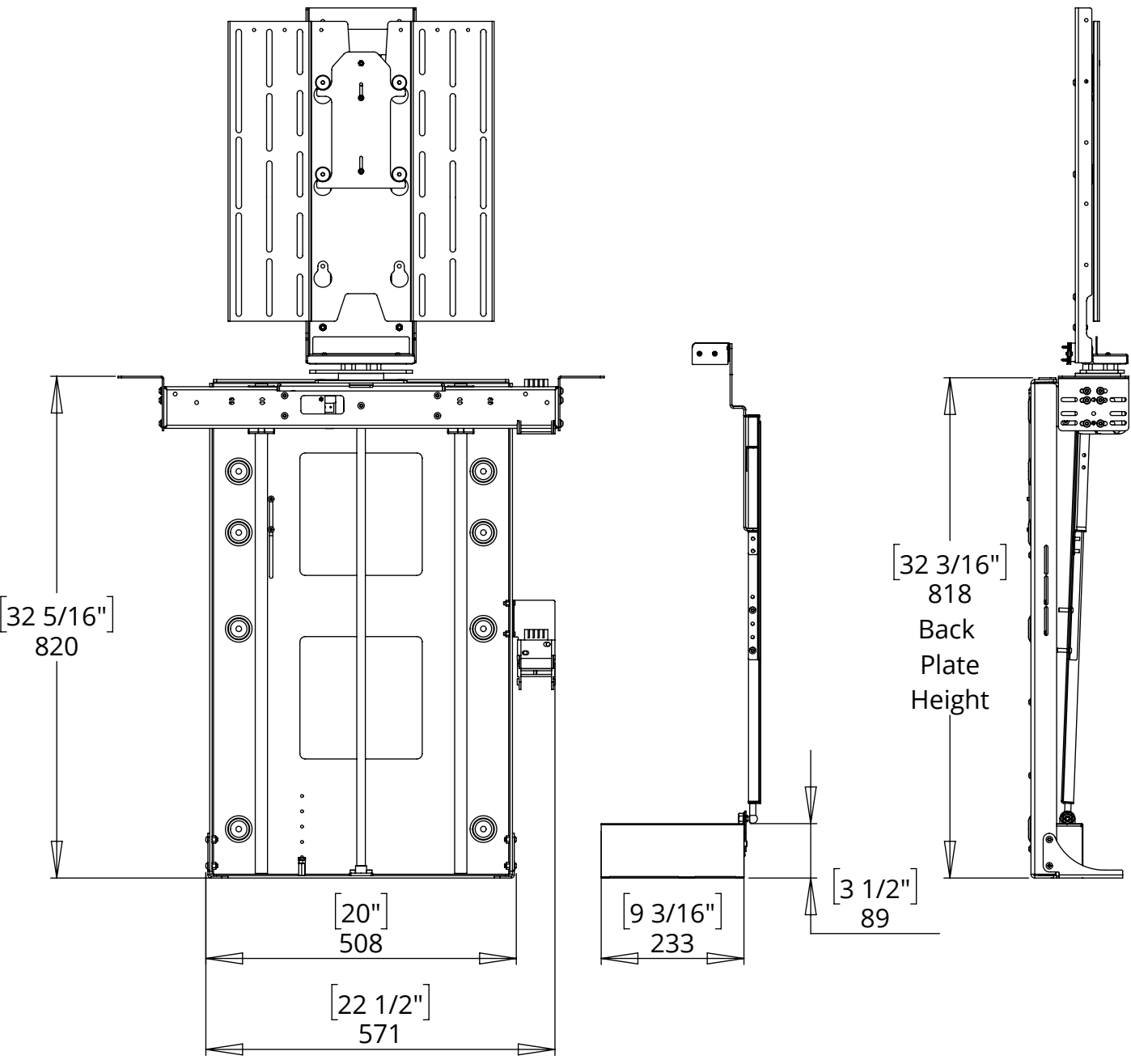


LSM-EFA-4

LIFT SYSTEM MEDIUM WITH ELECTRIC FLAP

OVERALL MECHANISM DIMENSIONS

MECHANISM - UP POSITION



MECHANISM - DOWN POSITION

