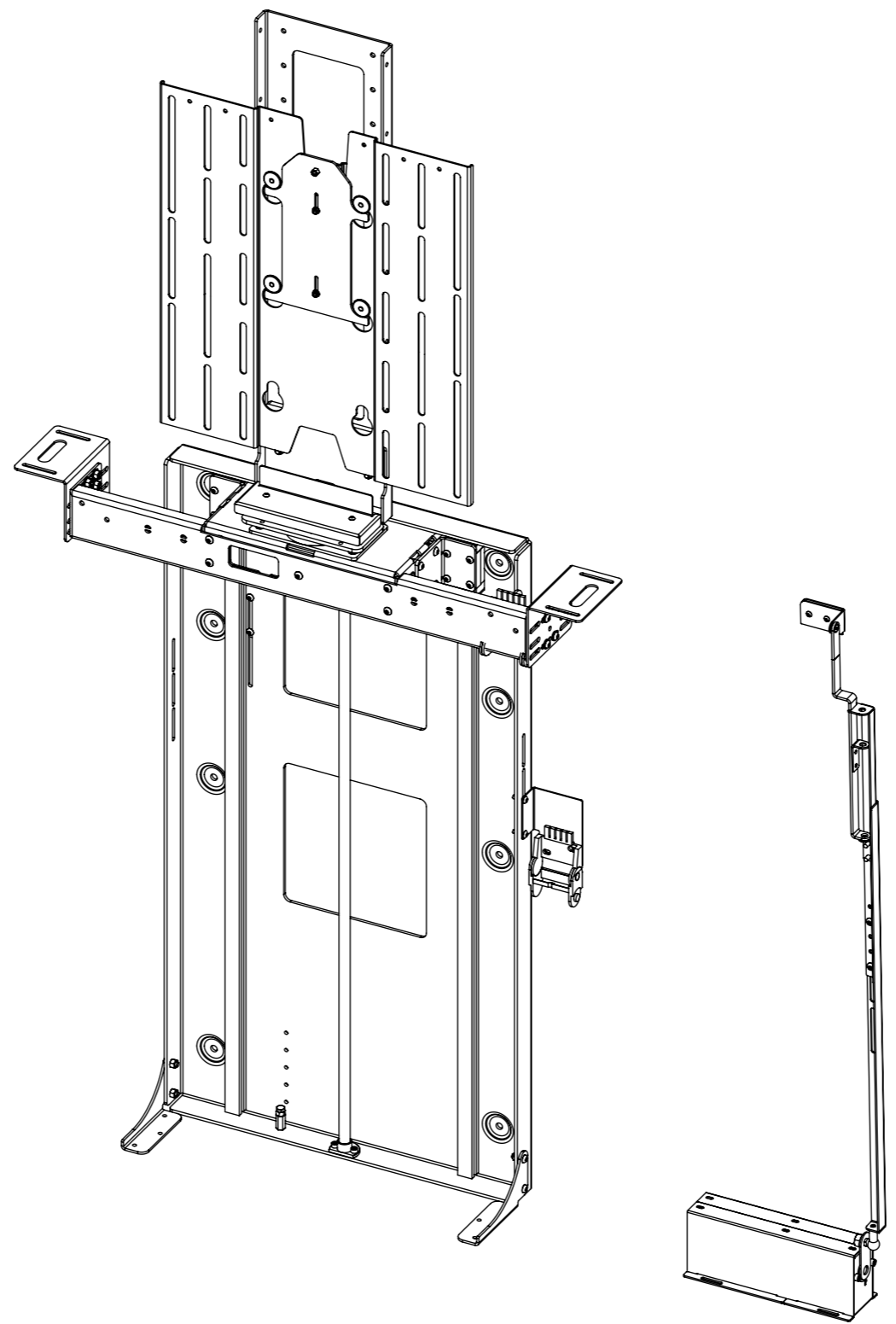


# LSM-EFA-6

## LIFT SYSTEM MEDIUM WITH ELECTRIC FLAP



future automation



# LSM-EFA-6

## LIFT SYSTEM MEDIUM WITH ELECTRIC FLAP



SPECIFICATION	MEASUREMENTS
Maximum Screen Height	795mm (31 5/16")
Maximum Lifting Capacity	50Kg (110lb)
Maximum Lifting Capacity (Marine)	30Kg (66lb)
Internal Cabinet Height	950mm (37 3/8")
Decibel Rating	52 dB
Packaging Dimensions	1150 x 850 x 330mm (45 1/4 x 33 7/16 x 13")
Shipping Weight	37Kg (82lb)
Movement Type	Motorised
Power Supply Required	110V - 240V AC
Power Consumption	250 - 500W
Power Consumption Standby	3W
Mounting Patterns Supported	VESA 400, 300, 200 W x 400, 300, 200 H
Control Options	IR Remote, RS232, Contact Closure, RF Available
Product Options / Features	Specific B&O and Loewe mounts / adapters, Custom RAL paint finishes
Package Contents	Mechanism, IR remote control
Marine Suitable	Yes

# LSM-EFA-6




## LIFT SYSTEM MEDIUM WITH ELECTRIC FLAP



### CABLE ROUTING

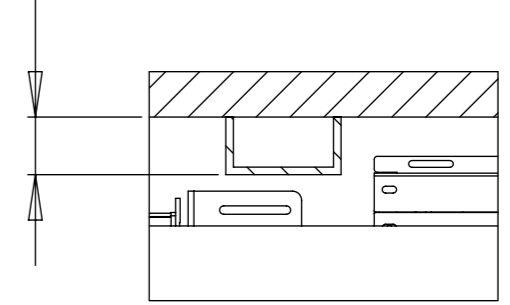
The LSM has an easily removable Mount Cover that cables from the screen can be routed underneath. Cables then travel through the centre of the Mount Boss and into the beam. Cables must be routed carefully to prevent any interference with the LSM beam as it operates.

Screen and Mechanism cables should be routed to a control box outside of the cabinet via an opening in the back of the cabinet or a conduit leading to the bottom.

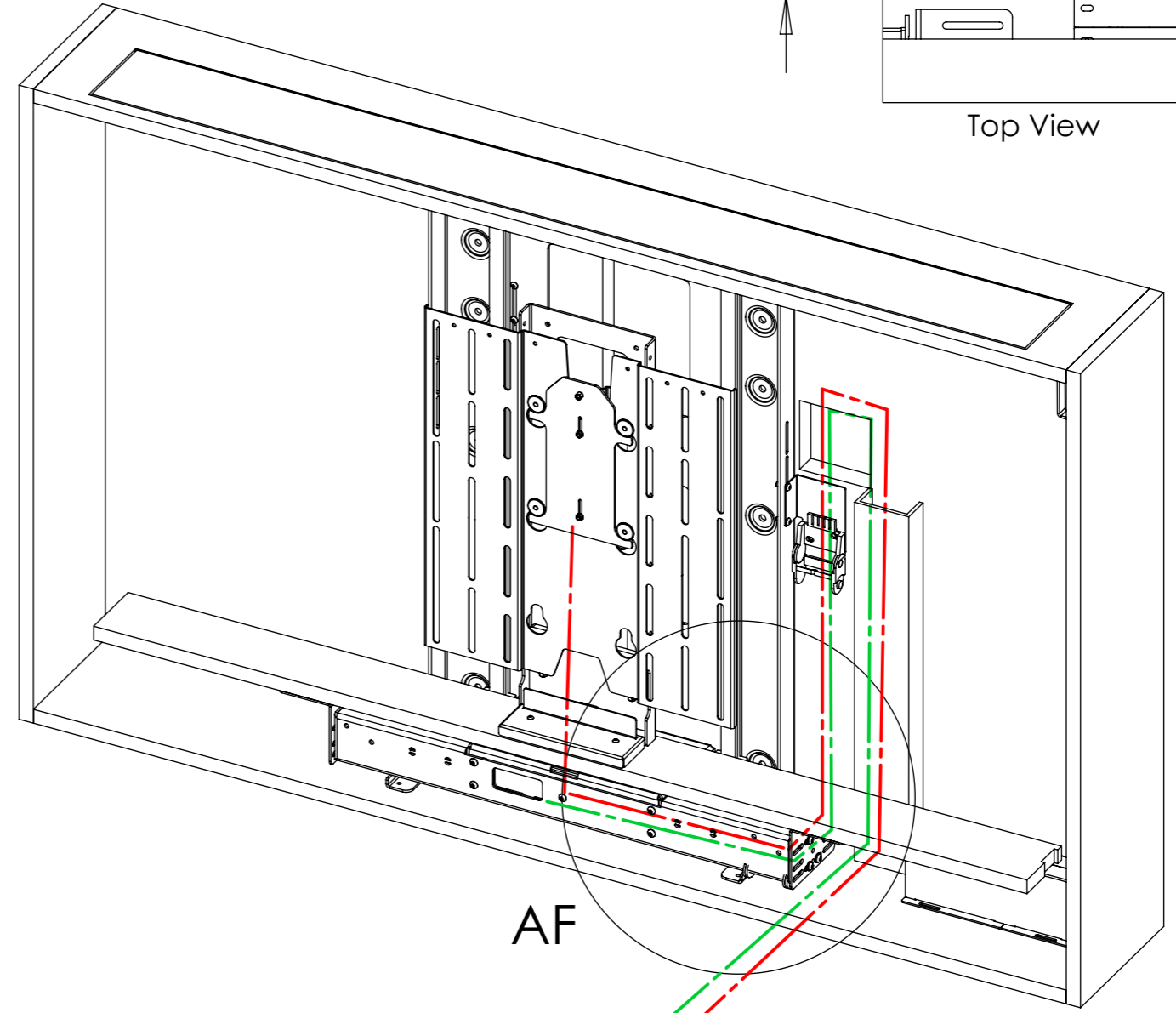
-  SCREEN CABLES
-  MECHANISM CABLES
-  POWER CABLE

[ 1 1/2" ]  
38

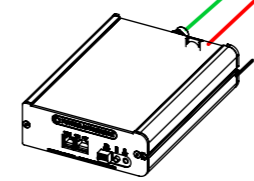
Maximum Depth of Conduit



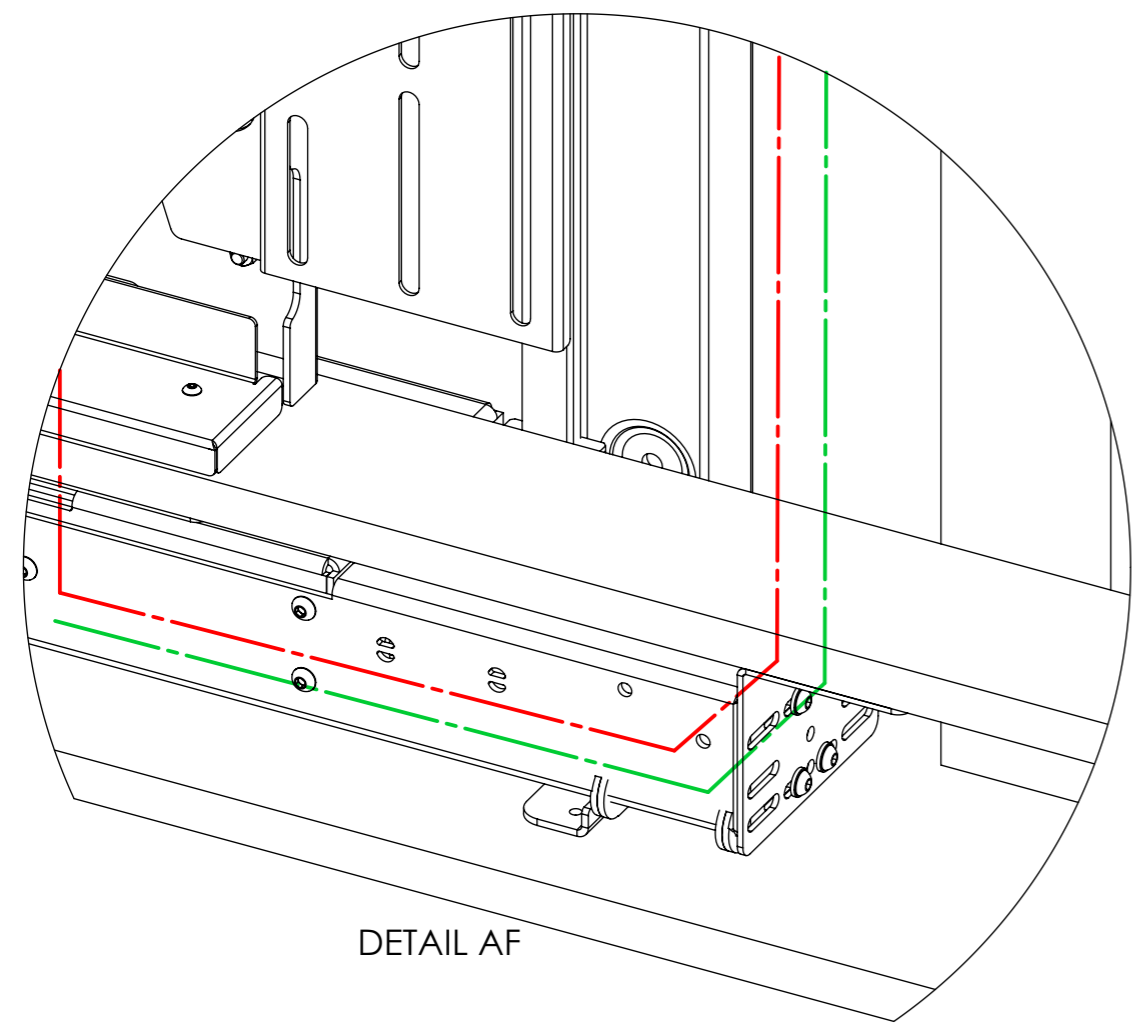
Top View



AF



To Mains Power



DETAIL AF

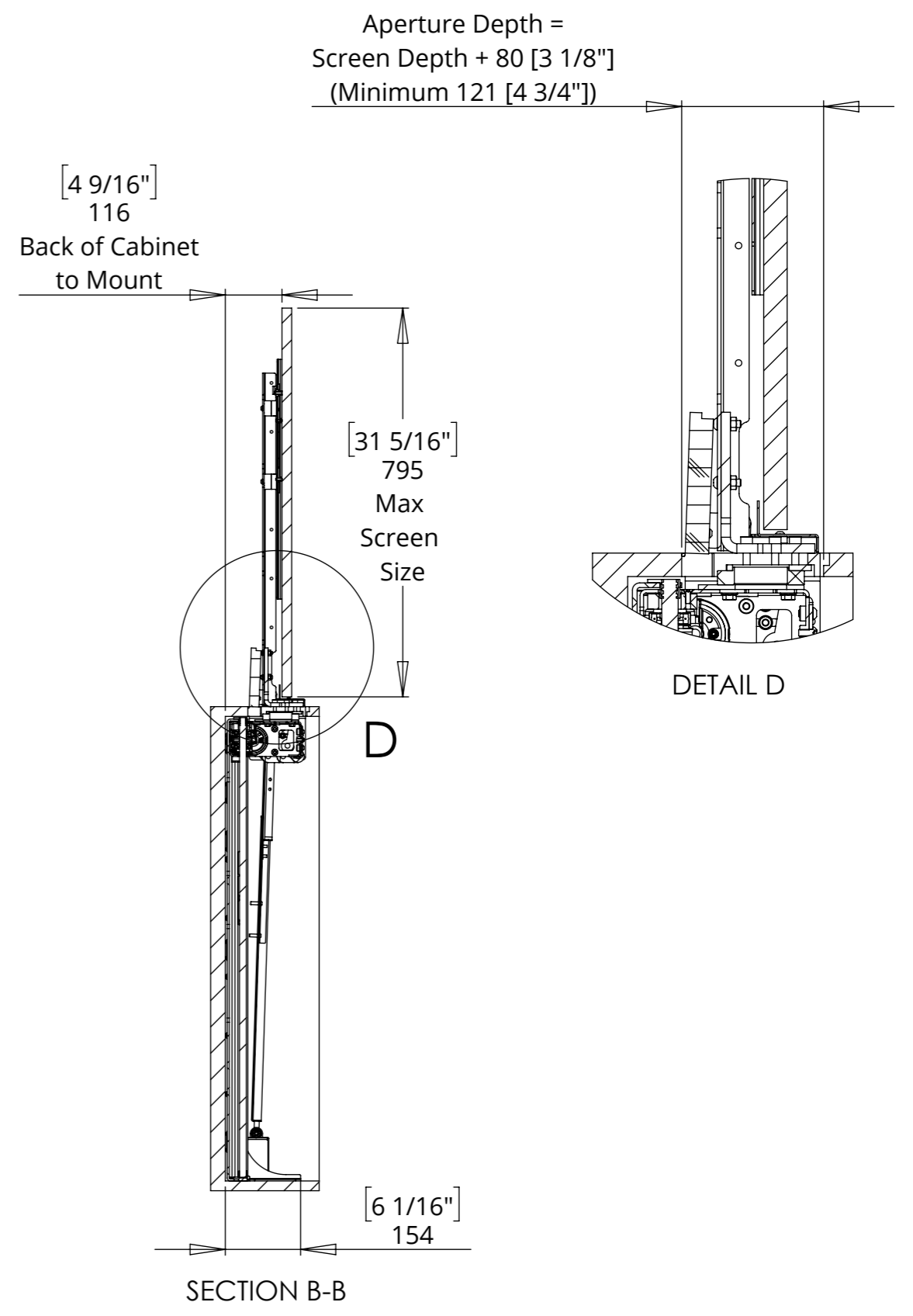
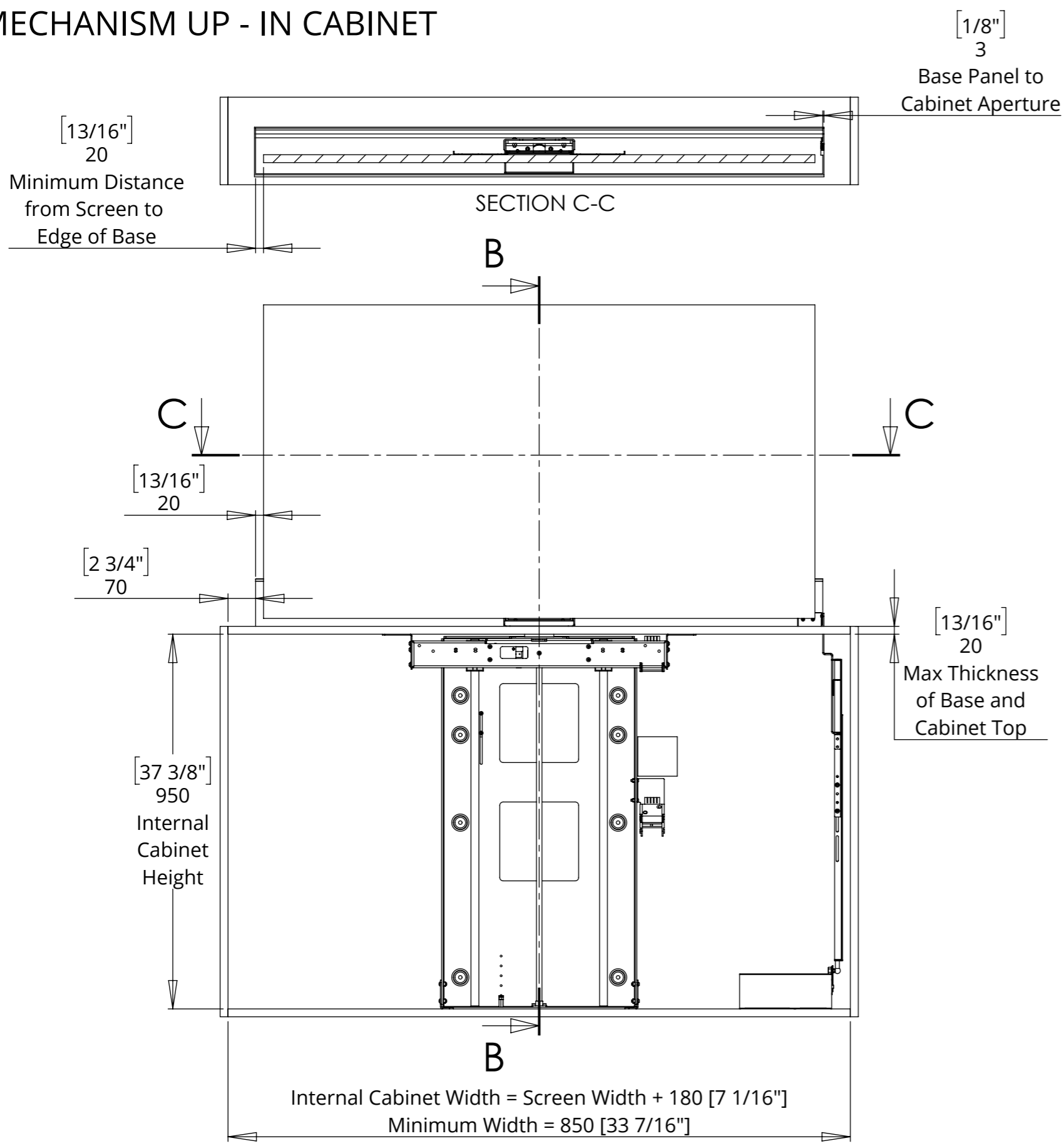
# LSM-EFA-6

## LIFT SYSTEM MEDIUM WITH ELECTRIC FLAP

MECHANISM UP - IN CABINET



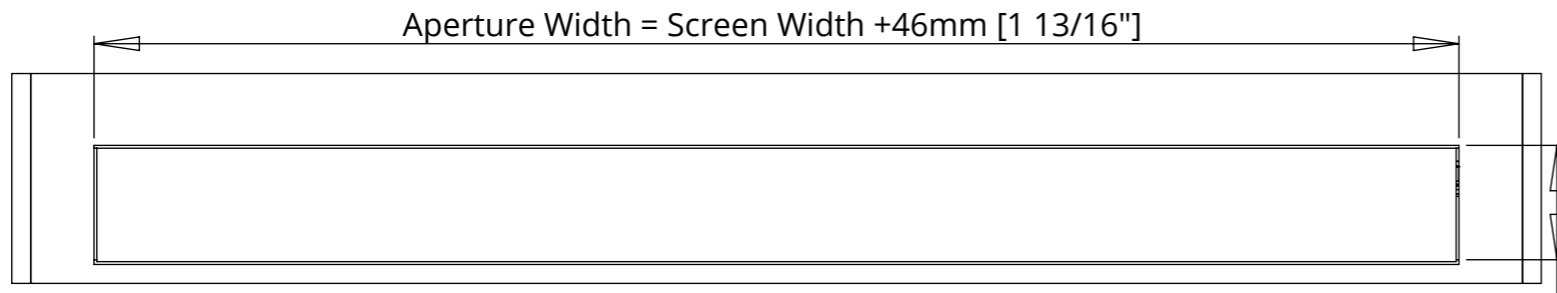
future automation



# LSM-EFA-6

## LIFT SYSTEM MEDIUM WITH ELECTRIC FLAP

### MECHANISM DOWN - IN CABINET

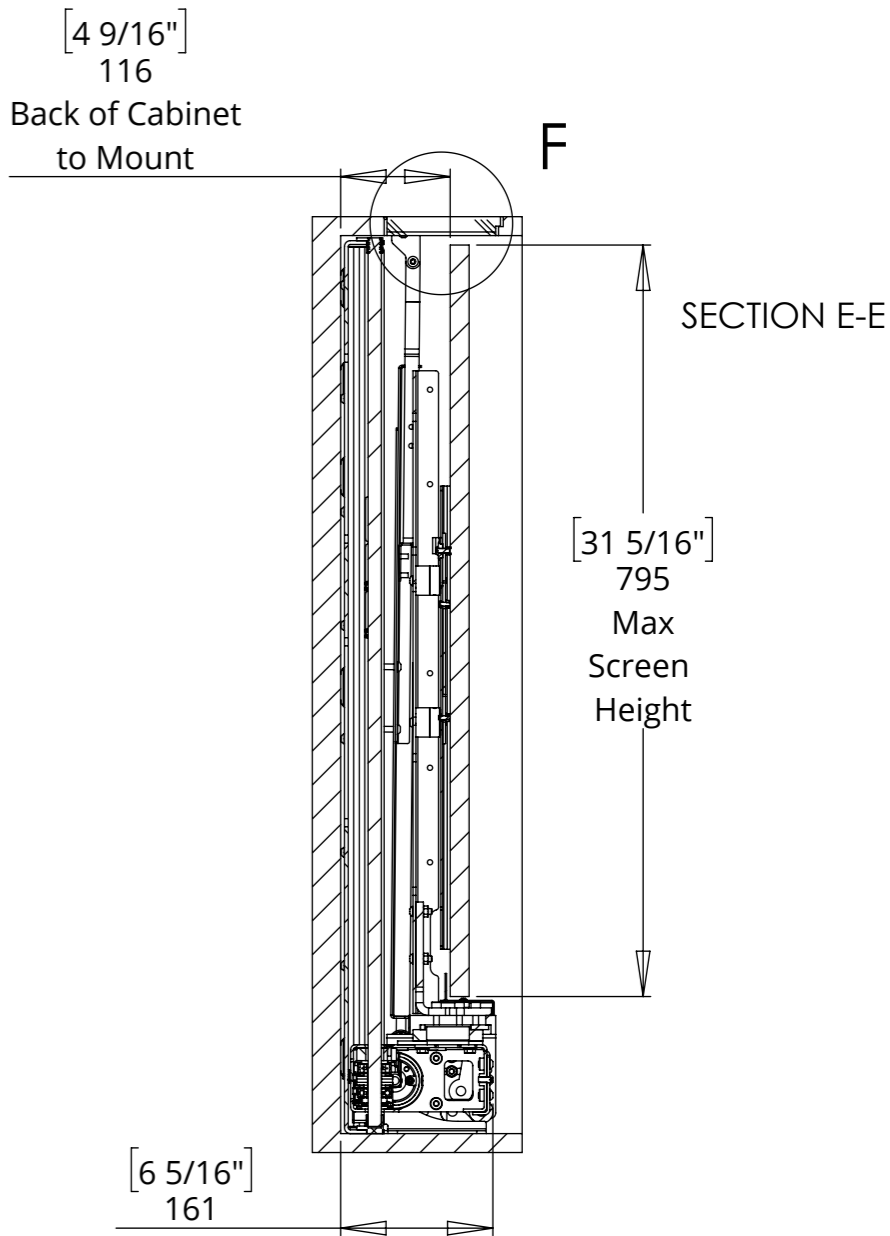
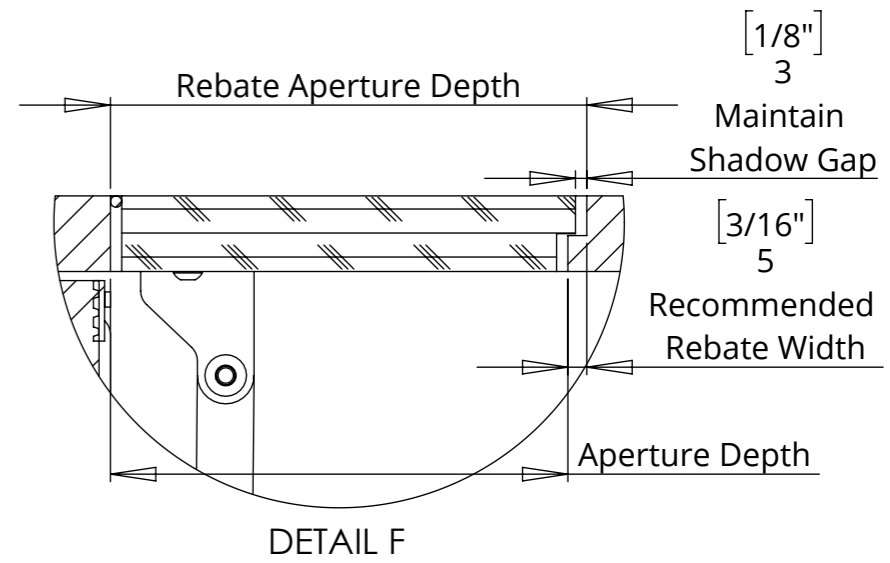
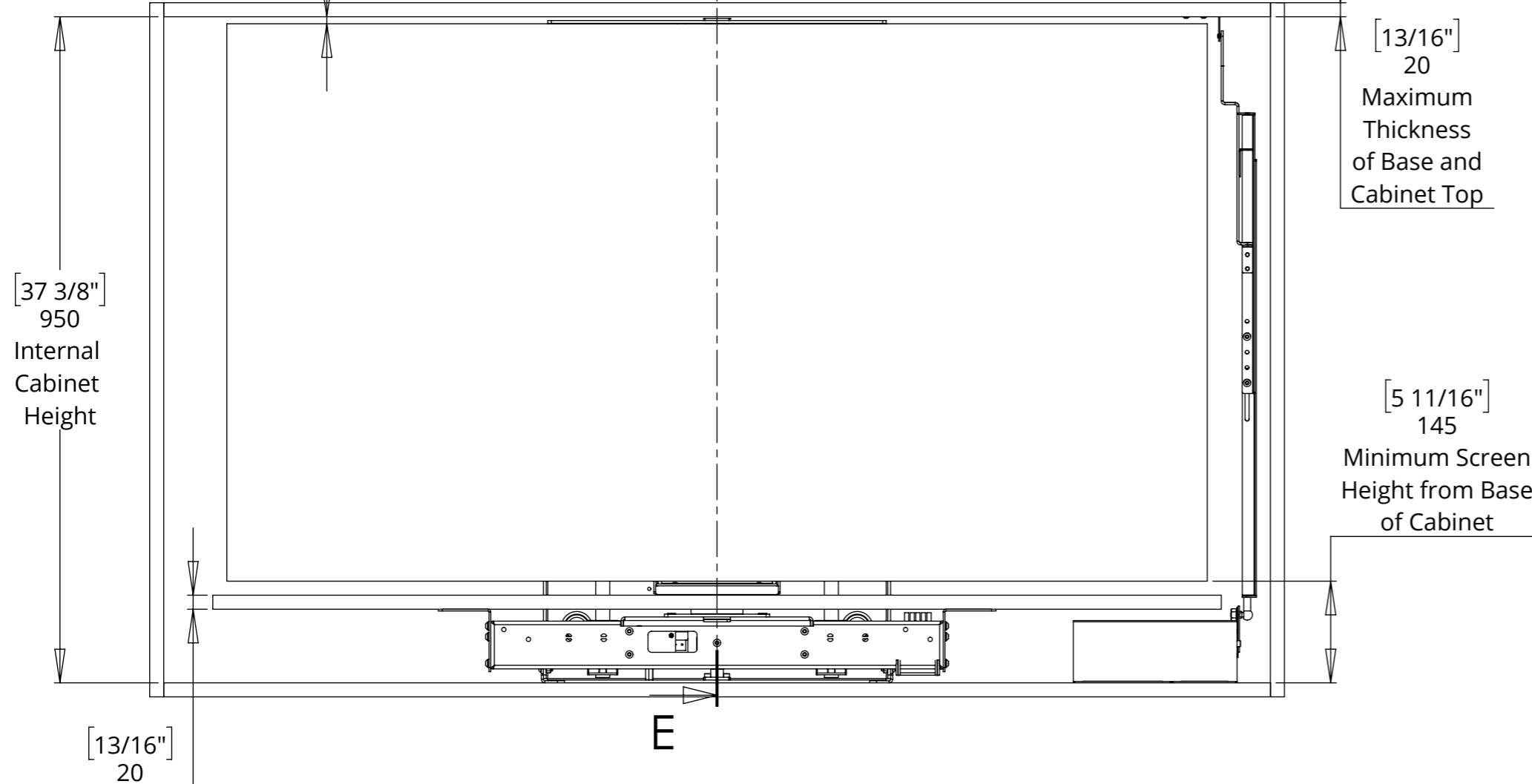


Aperture Depth =  
Screen Depth + 80 [3 1/8"]  
(Minimum 121 [4 3/4"])

[3/8"]  
10

Minimum Distance  
from top edge of  
Screen to Cabinet Flap

E



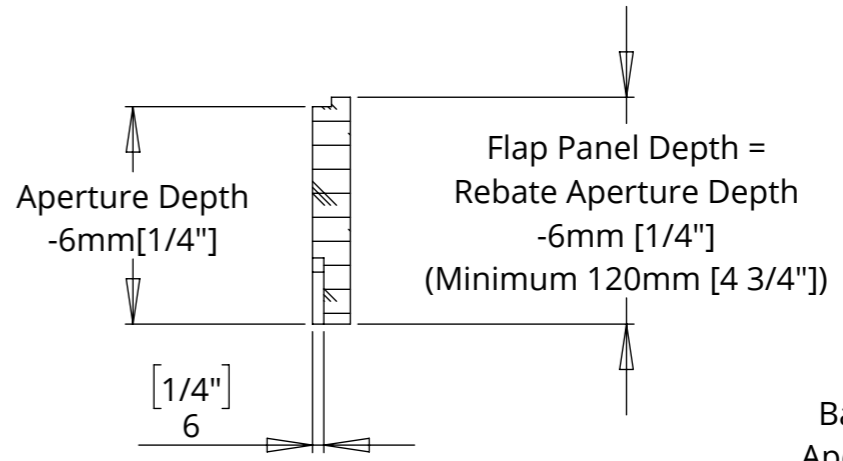
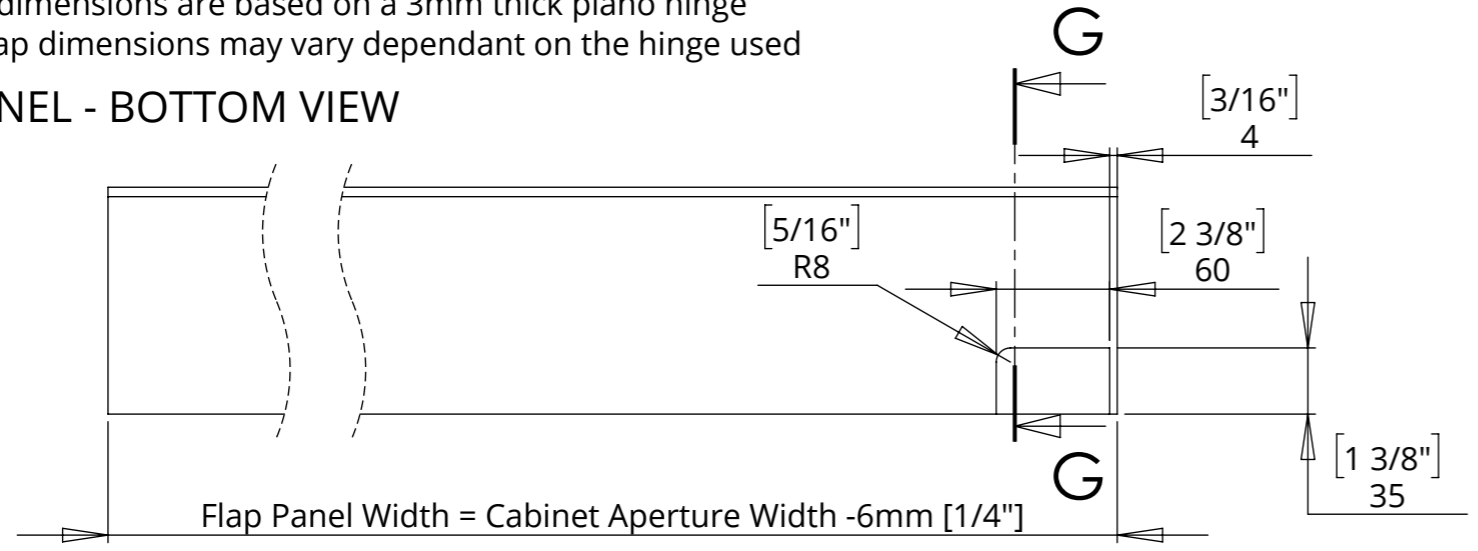
# LSM-EFA 6

## LIFT SYSTEM WITH ELECTRIC FLAP

### BASE PANEL AND FLAP DETAILS

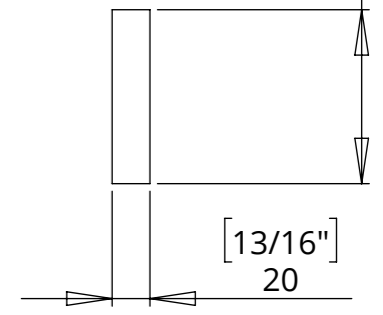
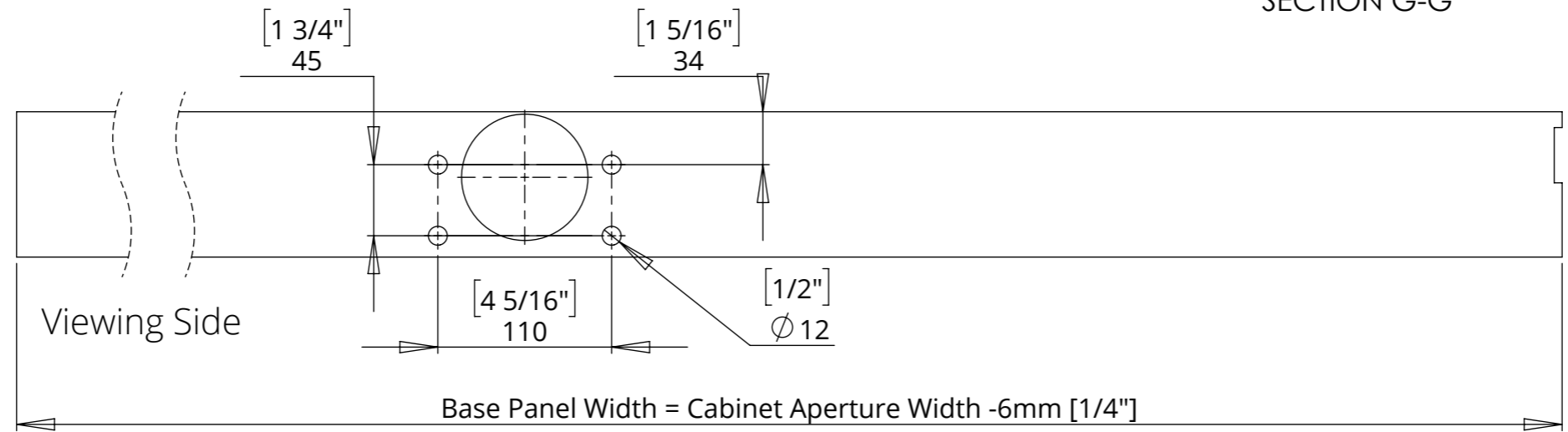
Flap depth dimensions are based on a 3mm thick piano hinge  
 Required flap dimensions may vary dependant on the hinge used

#### FLAP PANEL - BOTTOM VIEW

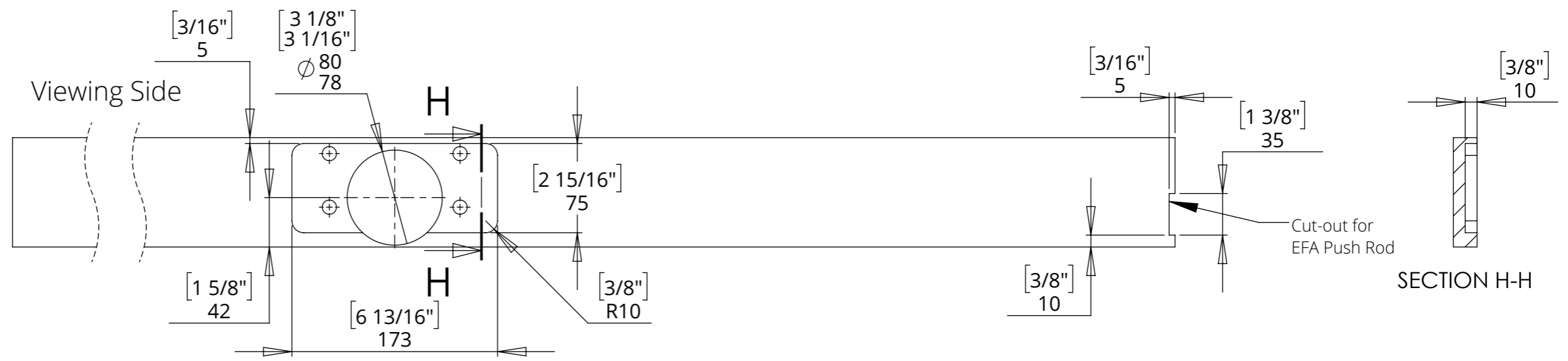


Base Depth = Aperture Depth -29mm [1 1/8"] (Minimum 92mm [3 5/8"])

#### BASE PANEL - TOP VIEW



#### BASE PANEL - BOTTOM VIEW



# LSM-EFA-6

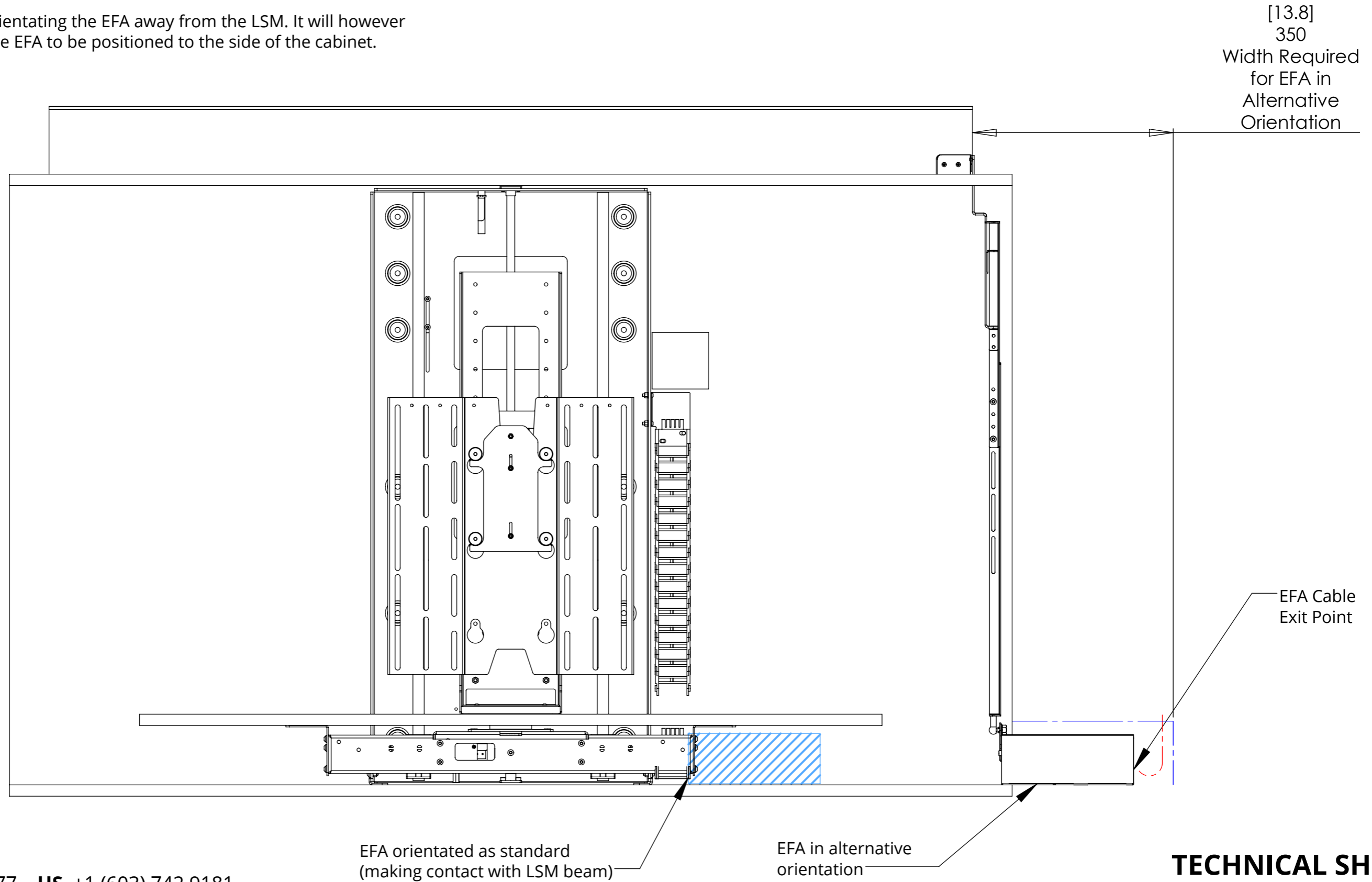


## LIFT SYSTEM MEDIUM WITH ELECTRIC FLAP

### POSITIONING THE EFA TO ACCOMMODATE SMALLER SCREENS

A Base Panel of less than 1170mm [46.0] wide will cause the EFA to interfere with the LSM beam.

This can be avoided by orientating the EFA away from the LSM. It will however require more space for the EFA to be positioned to the side of the cabinet.



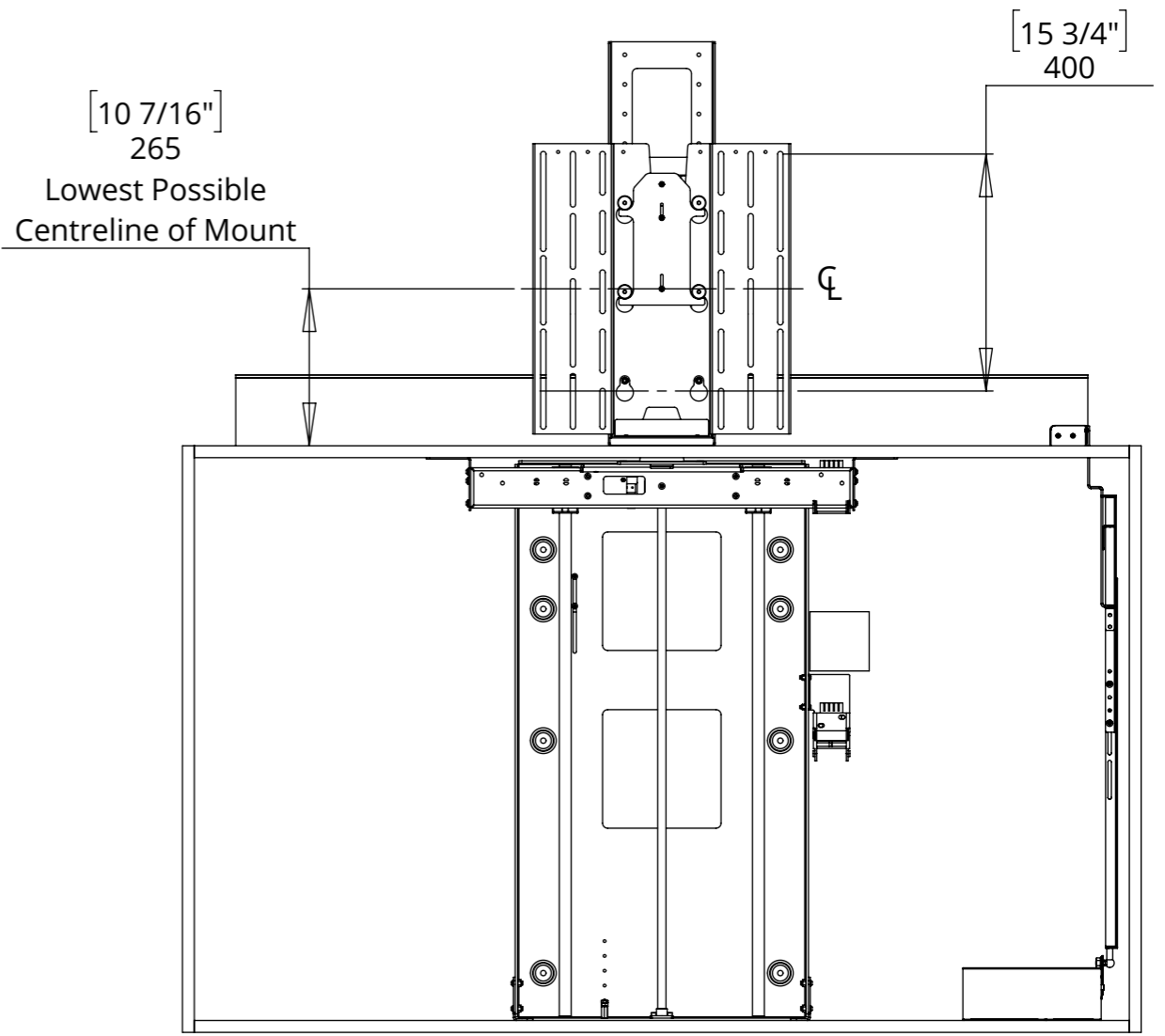
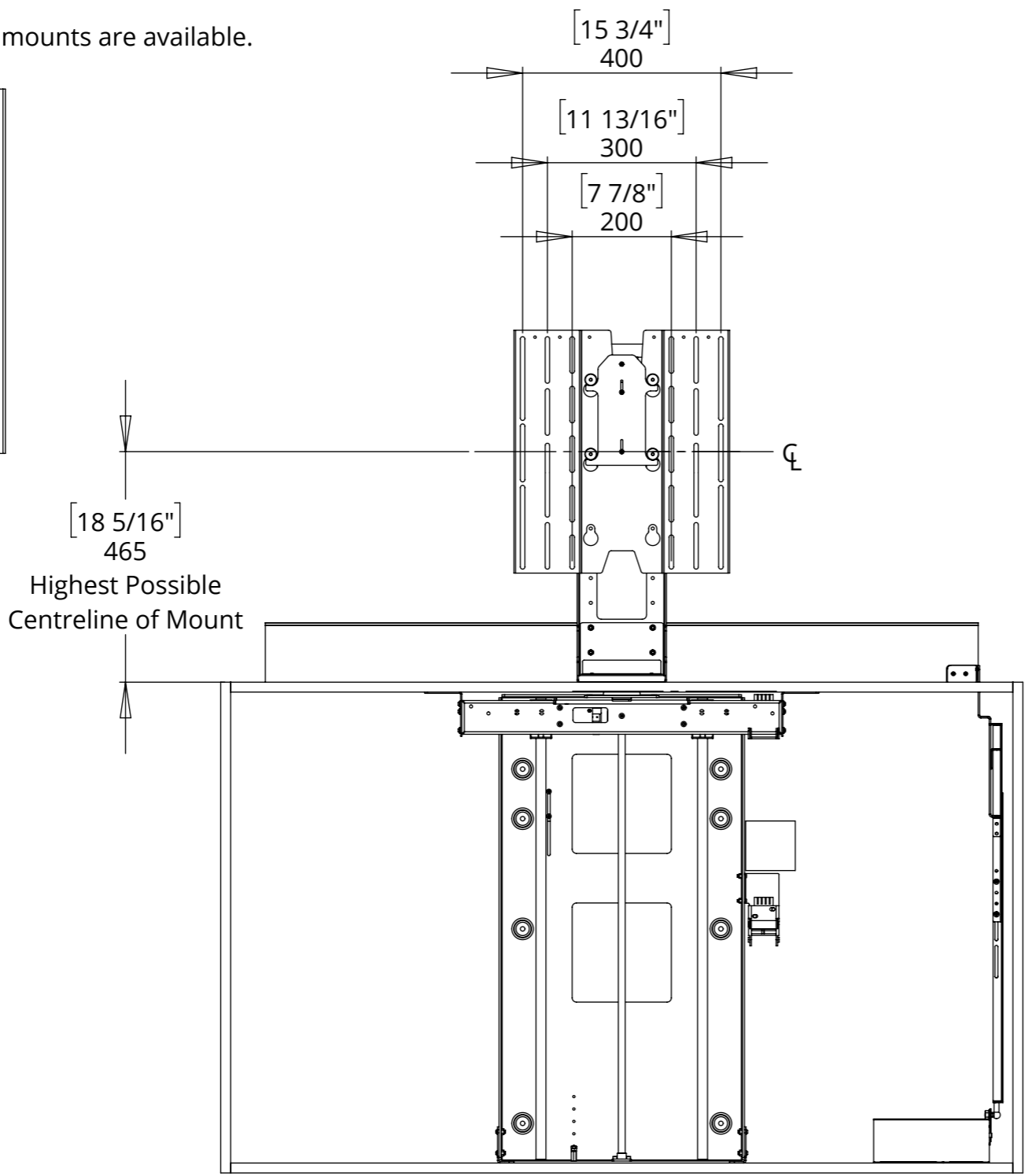
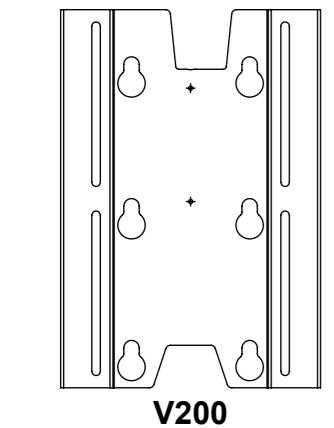
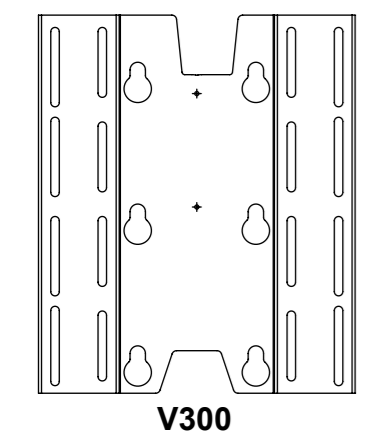
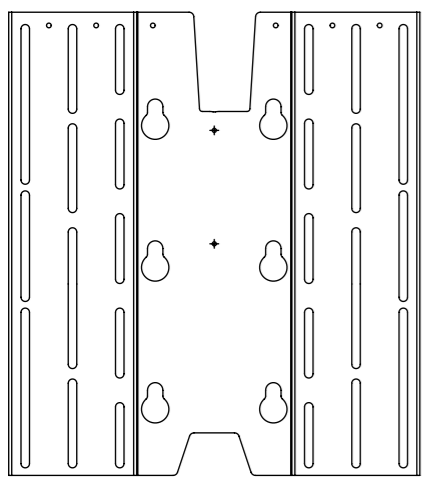
# LSM-EFA-6

## LIFT SYSTEM MEDIUM WITH ELECTRIC FLAP

### SCREEN MOUNT ADJUSTABILITY

A standard adjustable height VESA 400 mount is included. This is also compatible with VESA 300 and 200 mounting patterns

Separate VESA 300 and 200 mounts are available.





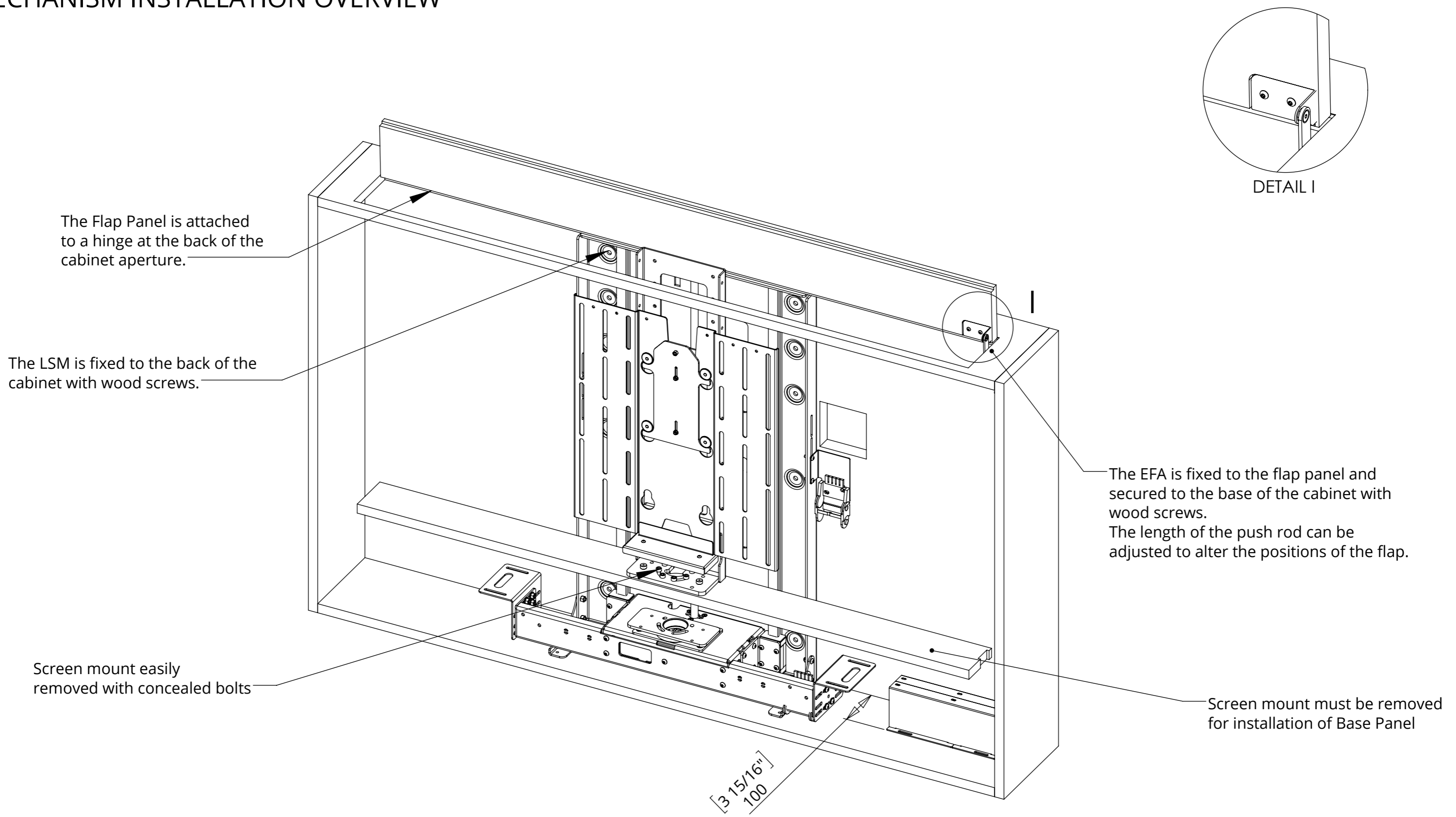
# LSM-EFA-6

## LIFT SYSTEM MEDIUM WITH ELECTRIC FLAP



future automation

### MECHANISM INSTALLATION OVERVIEW



The Flap Panel is attached to a hinge at the back of the cabinet aperture.

The LSM is fixed to the back of the cabinet with wood screws.

Screen mount easily removed with concealed bolts

DETAIL I

The EFA is fixed to the flap panel and secured to the base of the cabinet with wood screws. The length of the push rod can be adjusted to alter the positions of the flap.

Screen mount must be removed for installation of Base Panel

3 15/16"  
100

# LSM-EFA-6

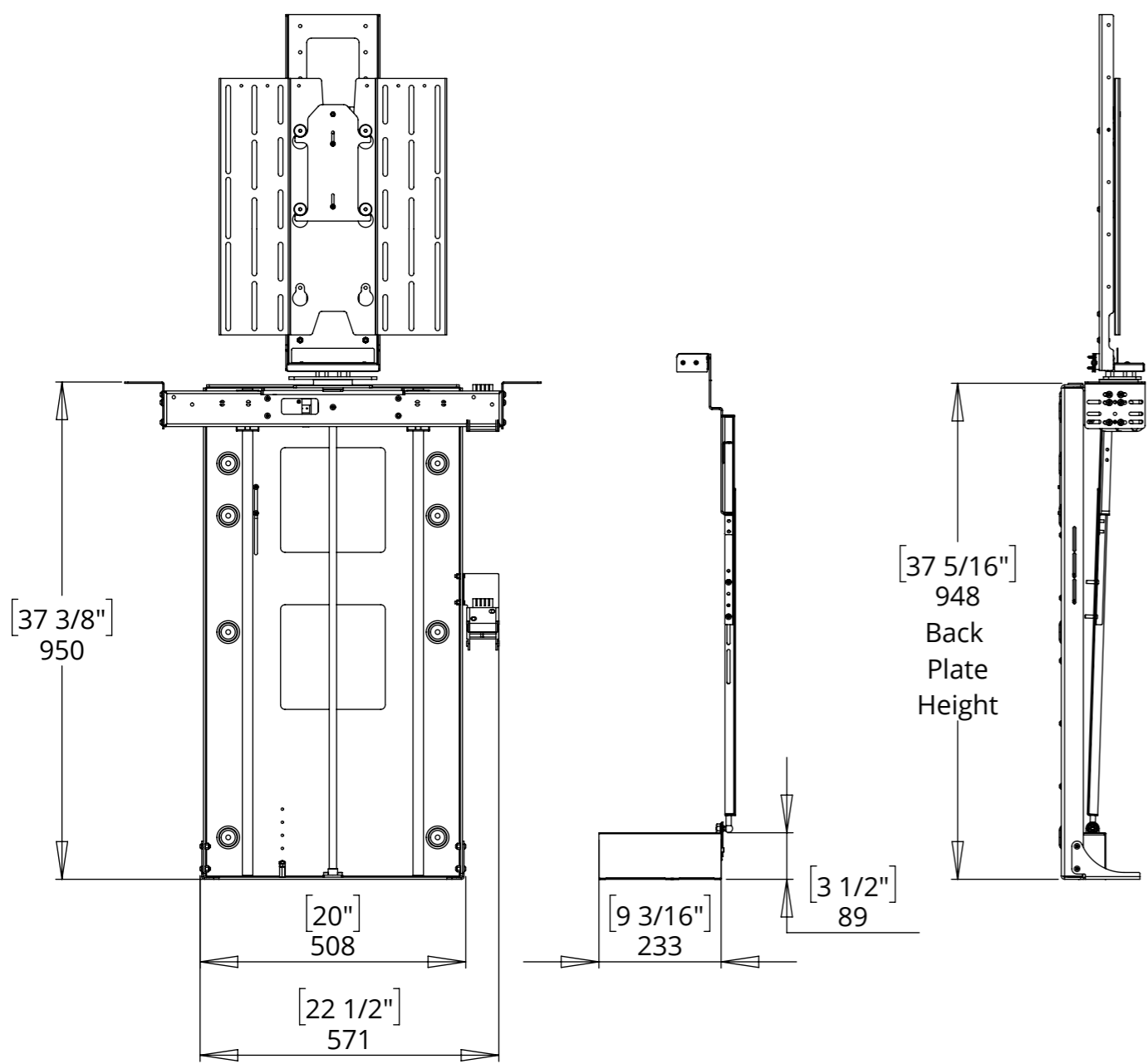
## LIFT SYSTEM MEDIUM WITH ELECTRIC FLAP

### OVERALL MECHANISM DIMENSIONS



future automation

#### MECHANISM - UP POSITION



#### MECHANISM - DOWN POSITION

