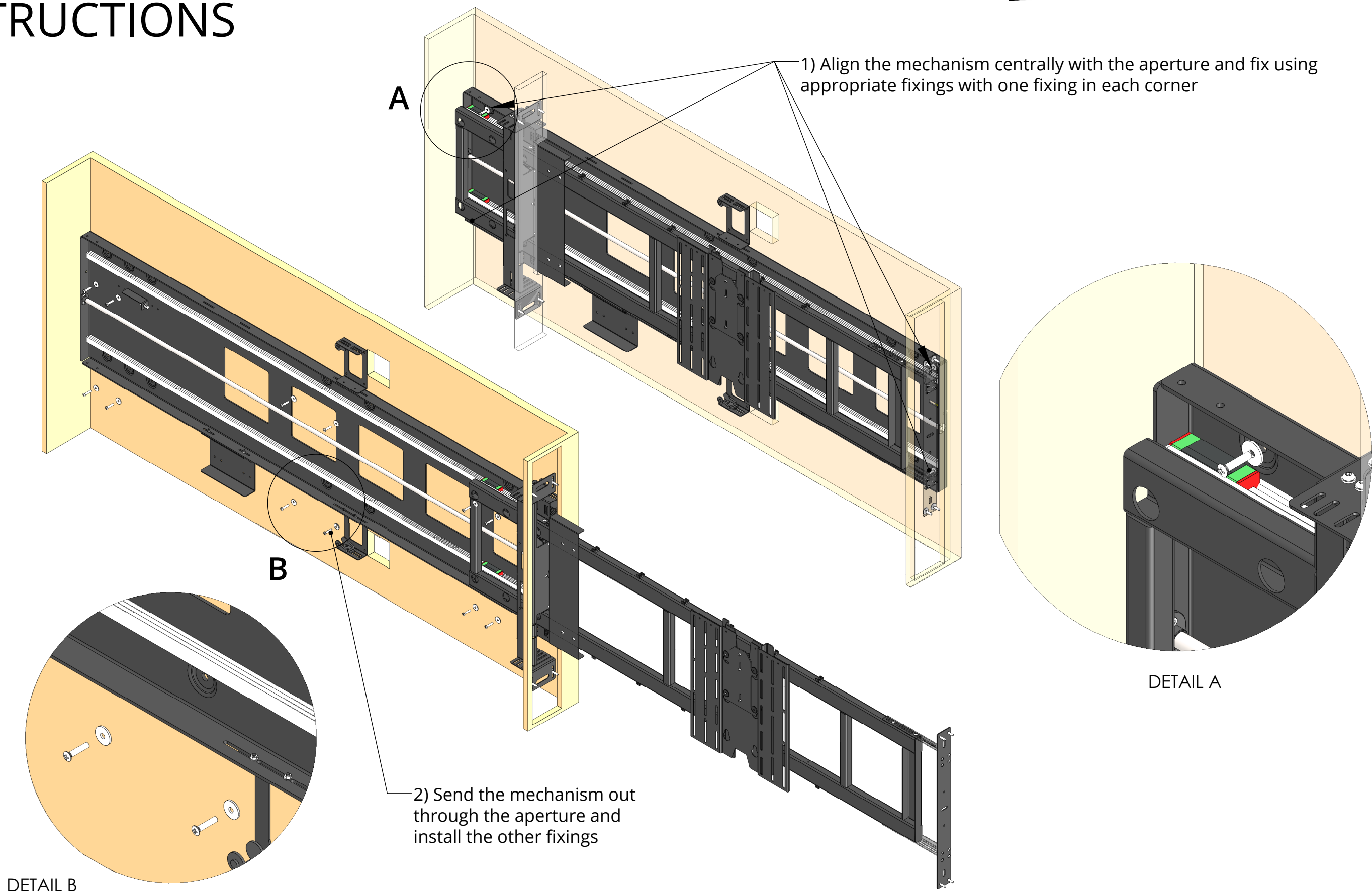


# LSM-HZ

## INSTRUCTIONS



future automation

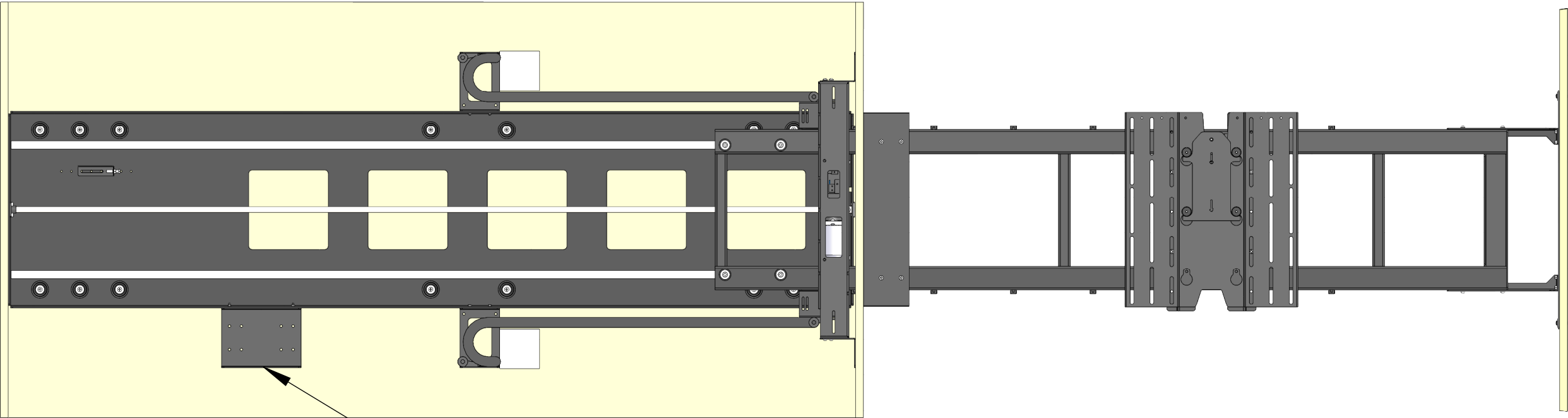
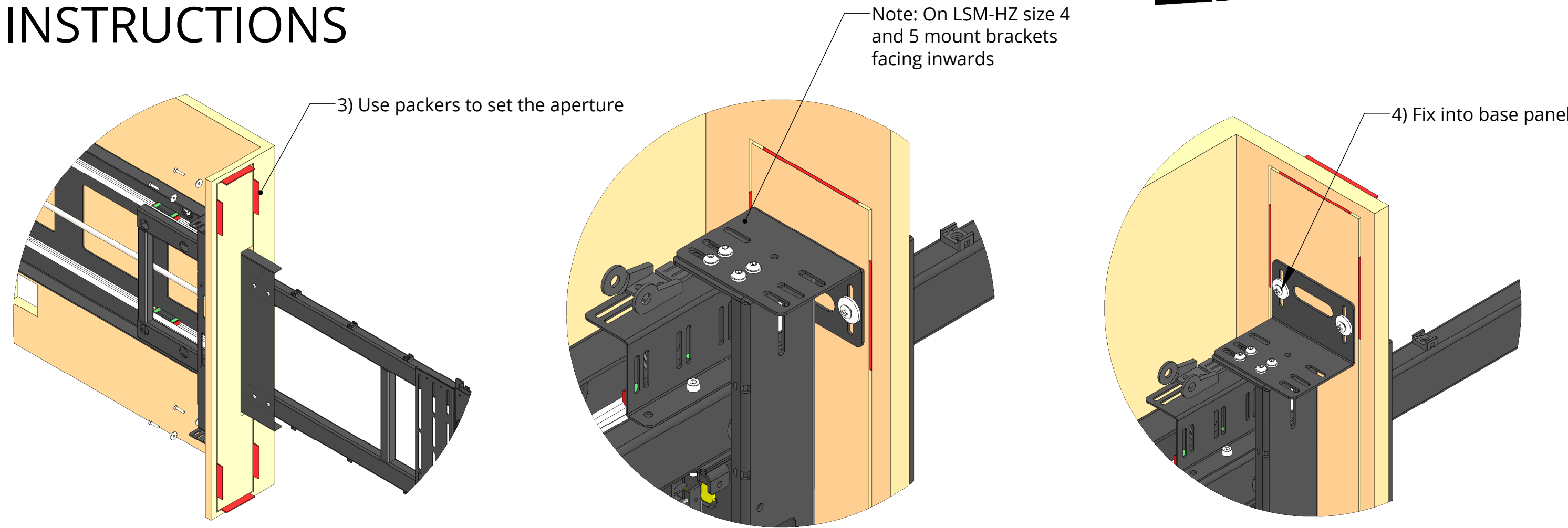


# LSM-HZ

## INSTRUCTIONS



future automation

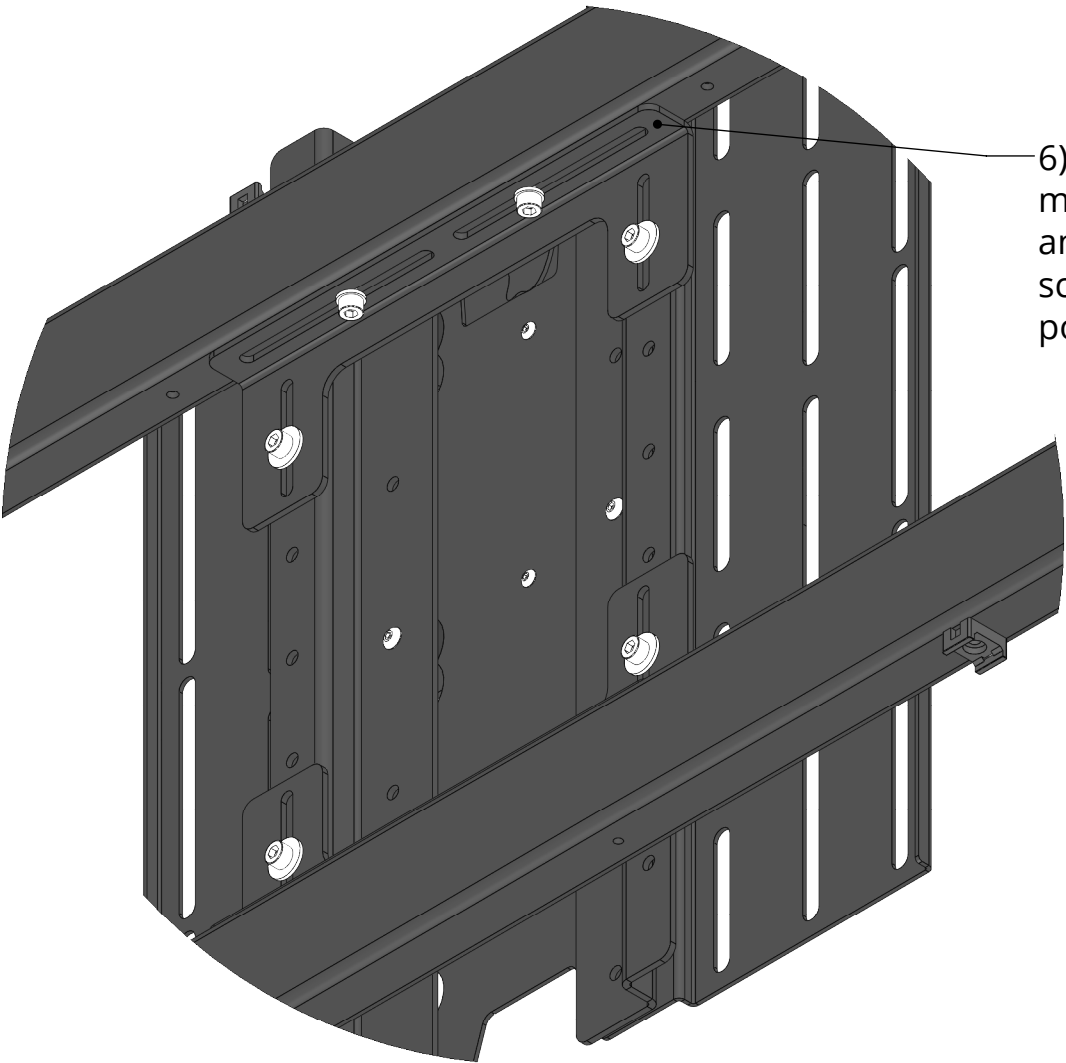
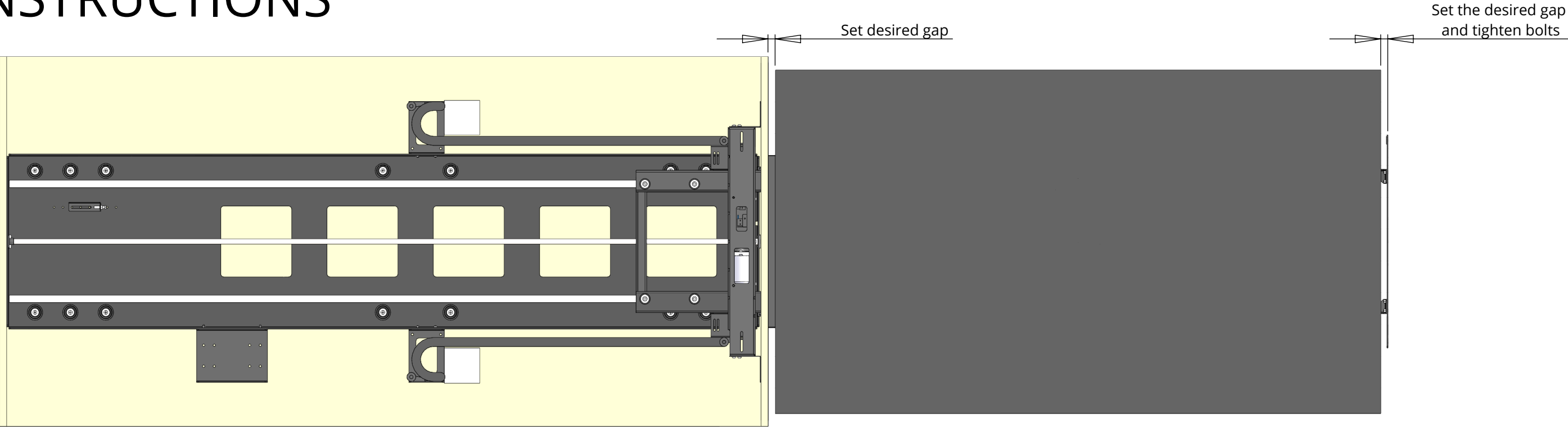


# LSM-HZ

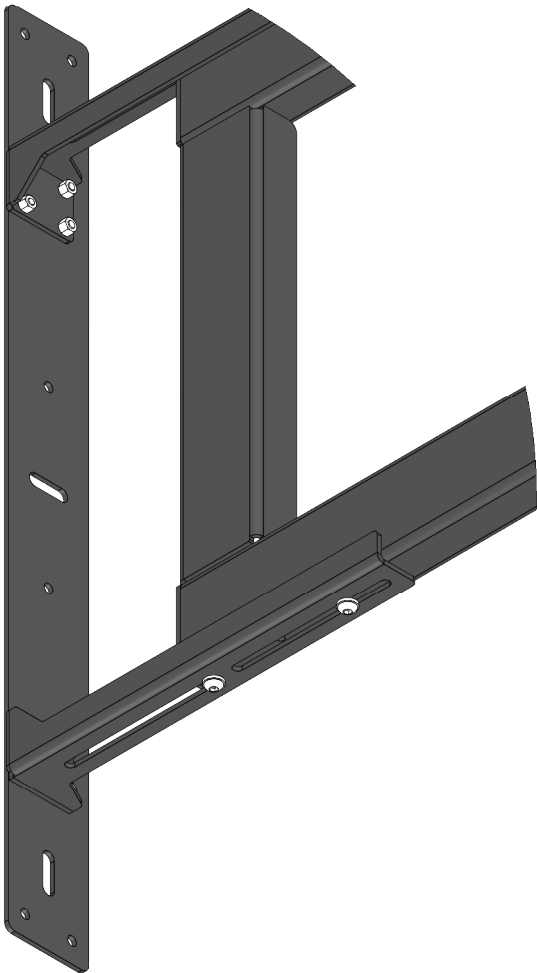
## INSTRUCTIONS



future automation



6) Vesa mount can be moved both horizontally and vertically to set screen in the desired position

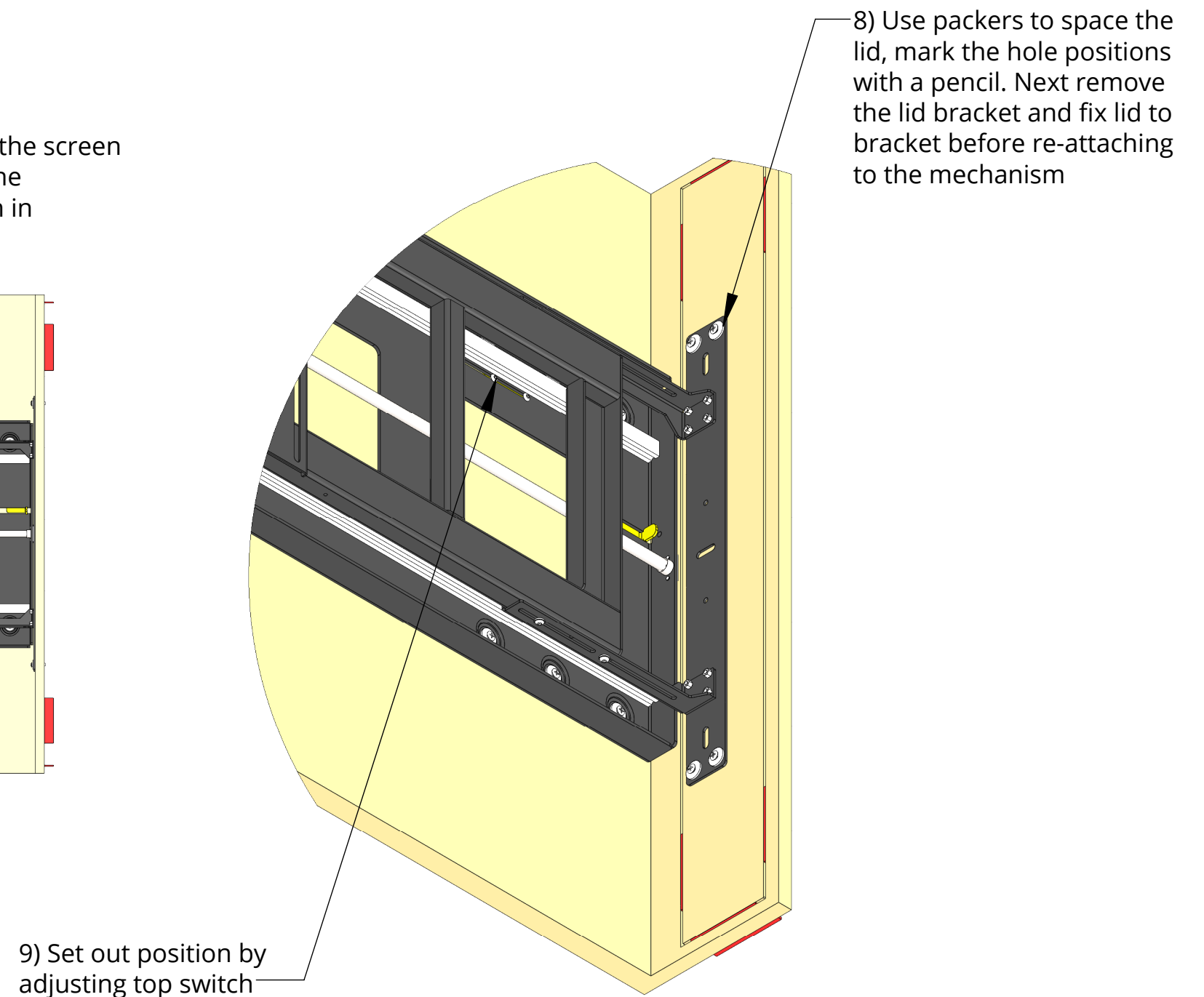
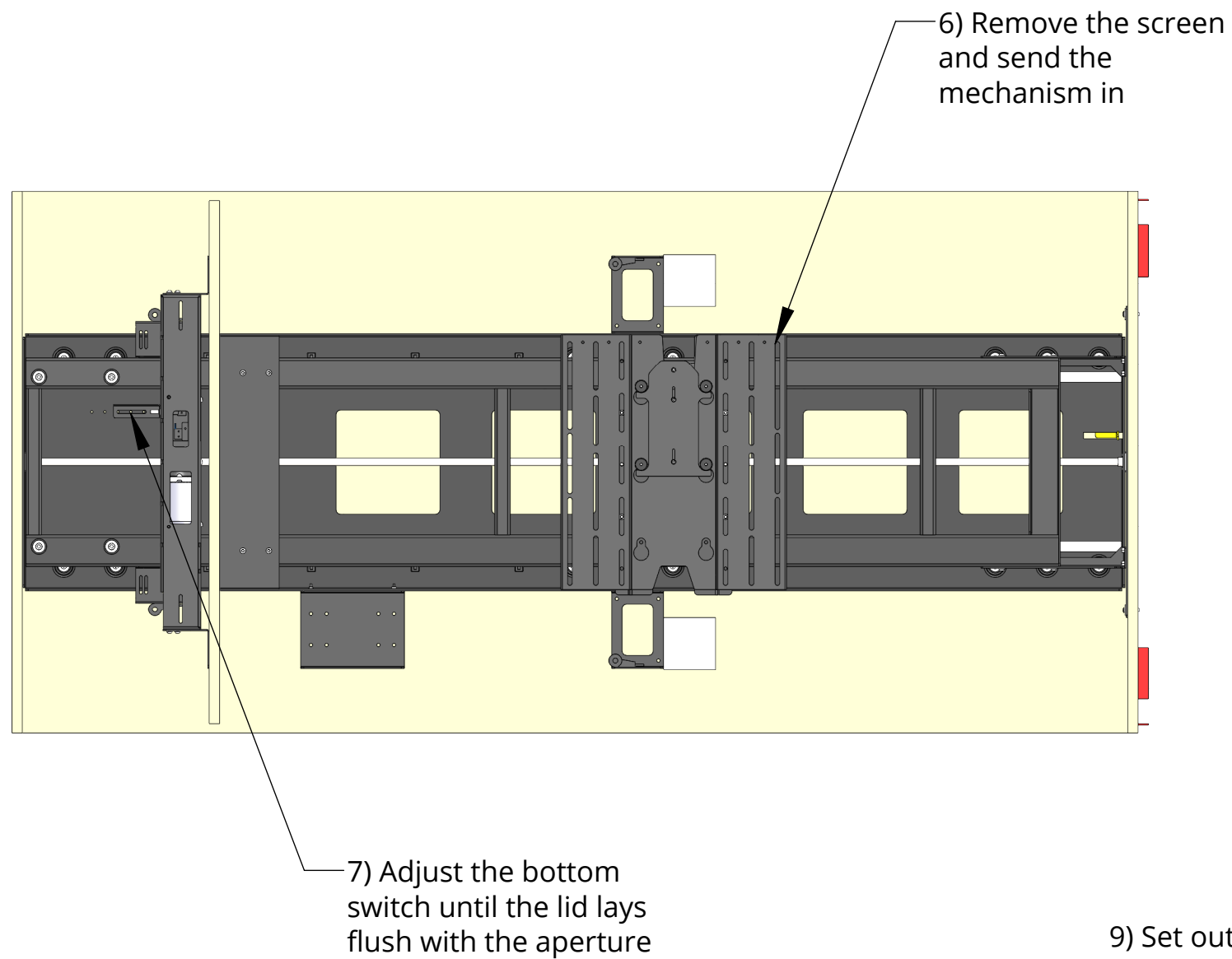


# LSM-HZ

## INSTRUCTIONS



future automation





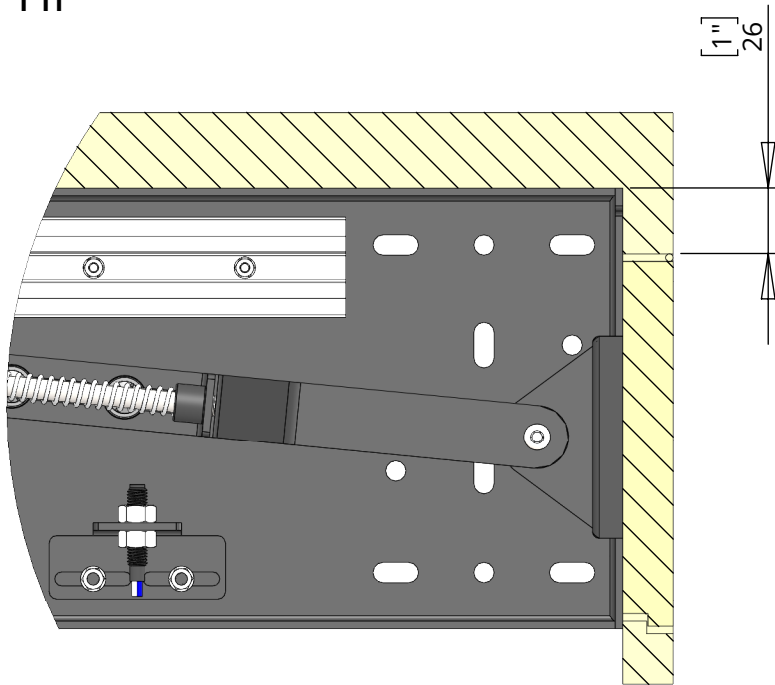
# LSM-HZ

## INSTRUCTIONS

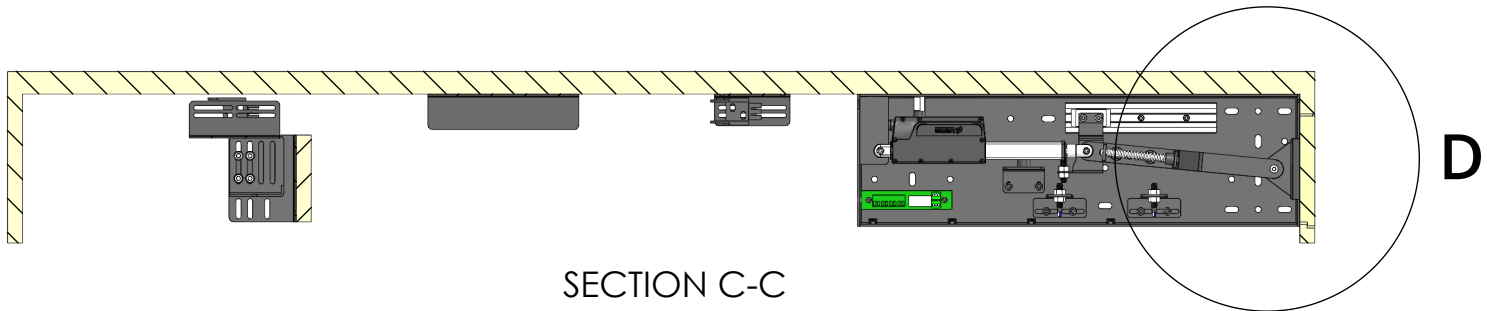
FITTING THE HF



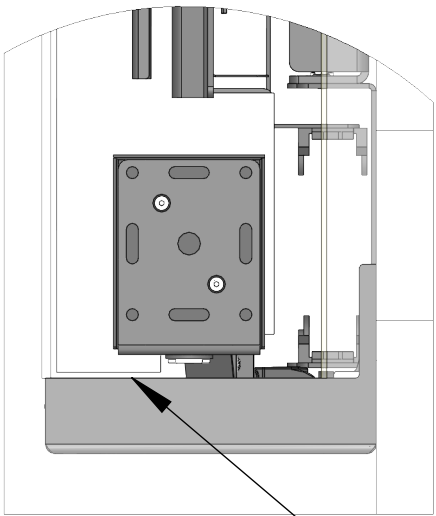
future automation



DETAIL D

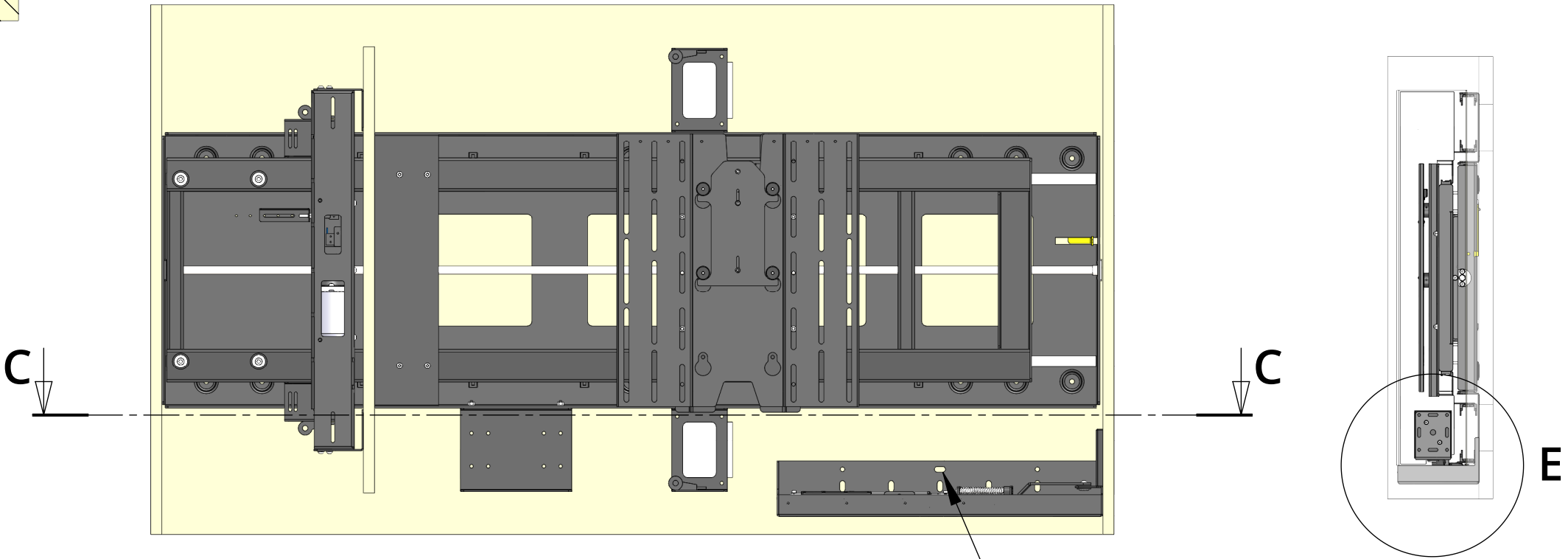


SECTION C-C



DETAIL E

Align edge of HF with  
edge of aperture



Once aligned, fix HF to cabinet

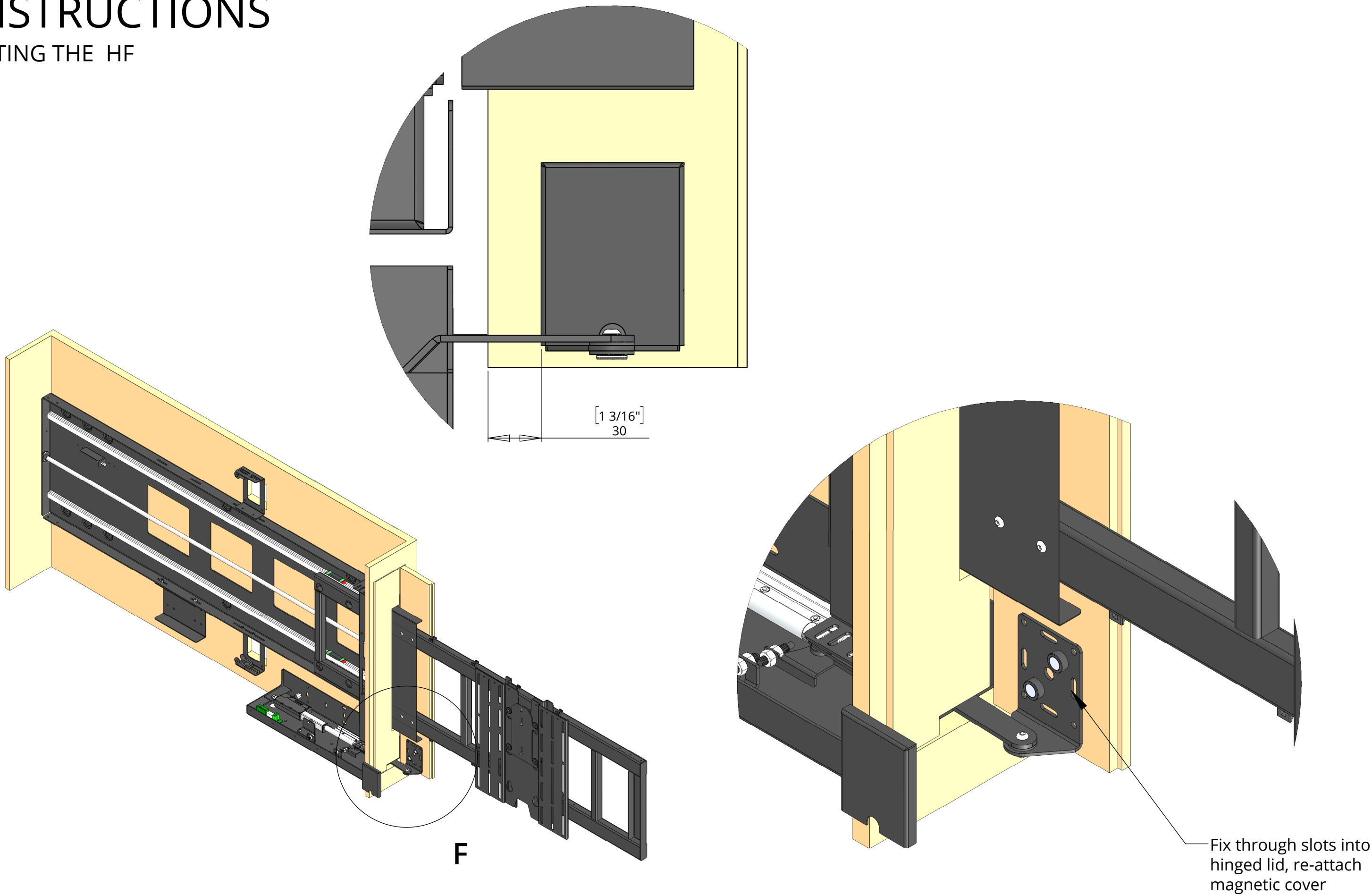
# LSM-HZ

## INSTRUCTIONS

FITTING THE HF



future automation



# LSM-HZ

## INSTRUCTIONS



future automation

